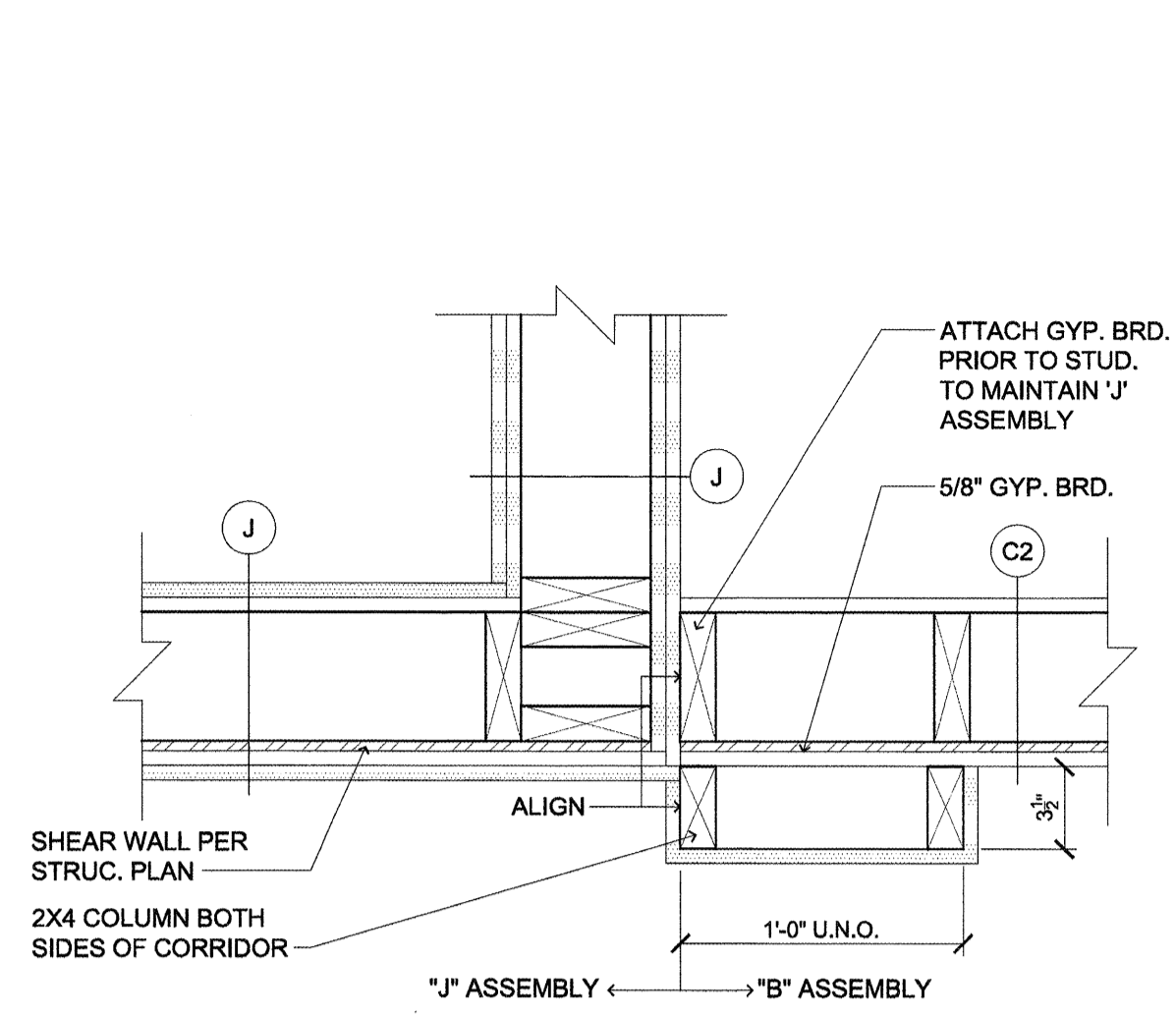
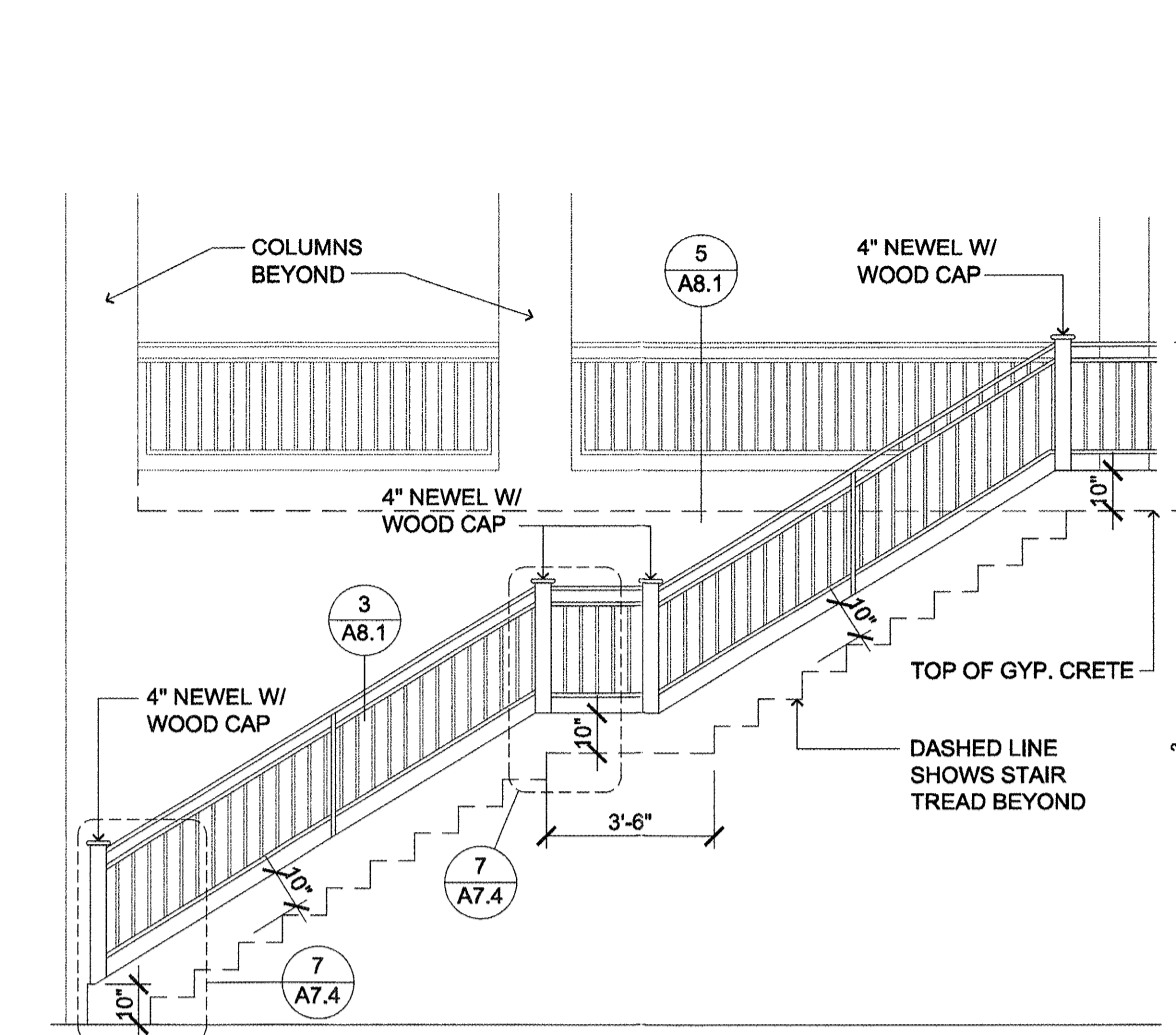


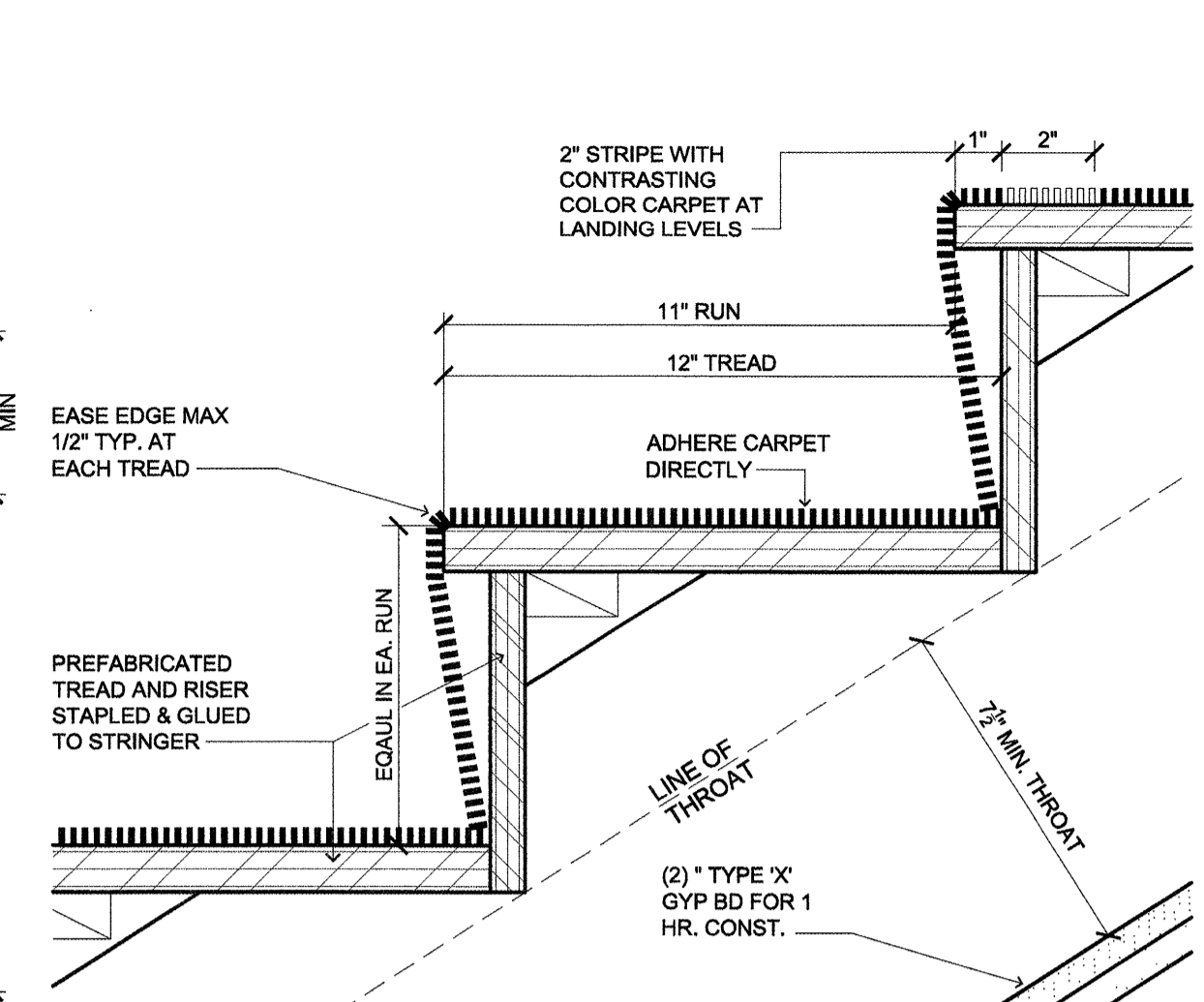
15 FIRE RATING AT ROOF
(STAIRWAY SHAFT WALL)
SCALE: 1" = 1'-0"



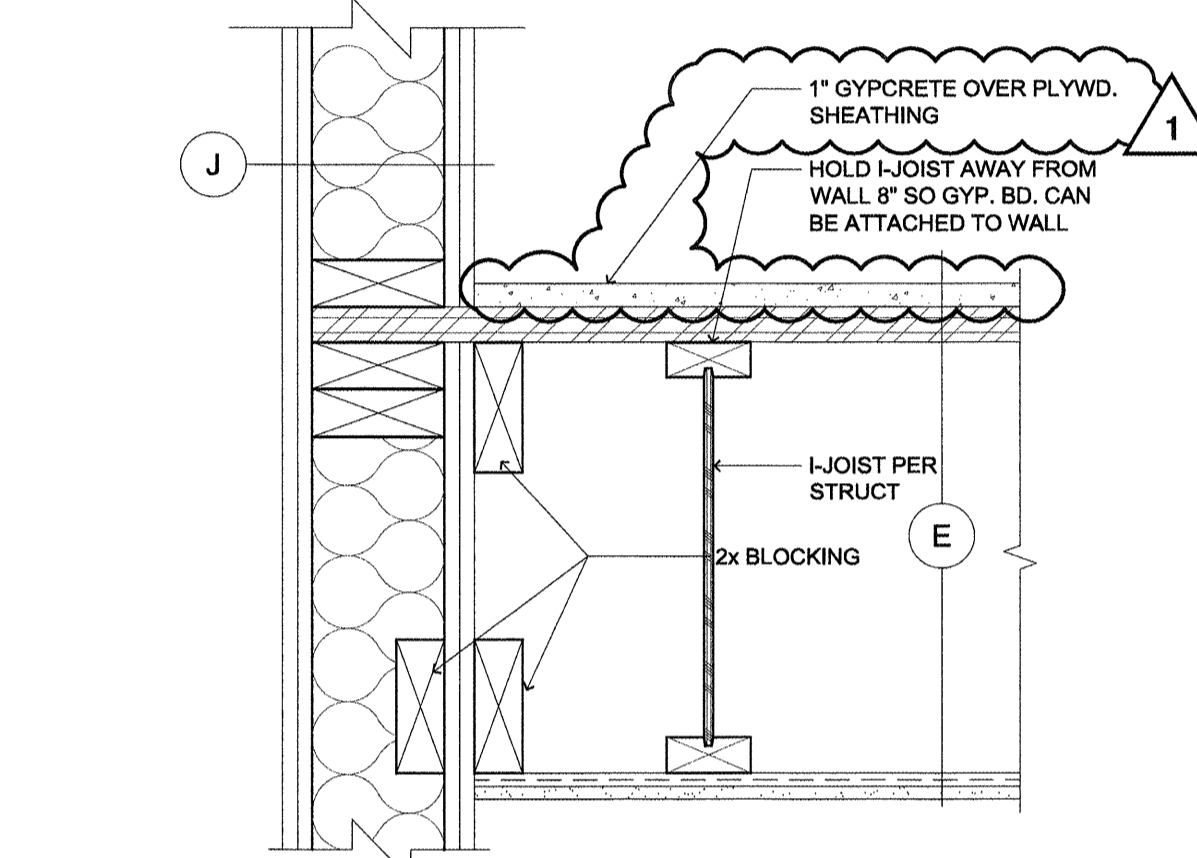
11 1 HOUR TO 2 HOUR WALL TRANSITION
(AT STAIRS/SHAFTS)
SCALE: 1-1/2" = 1'-0"



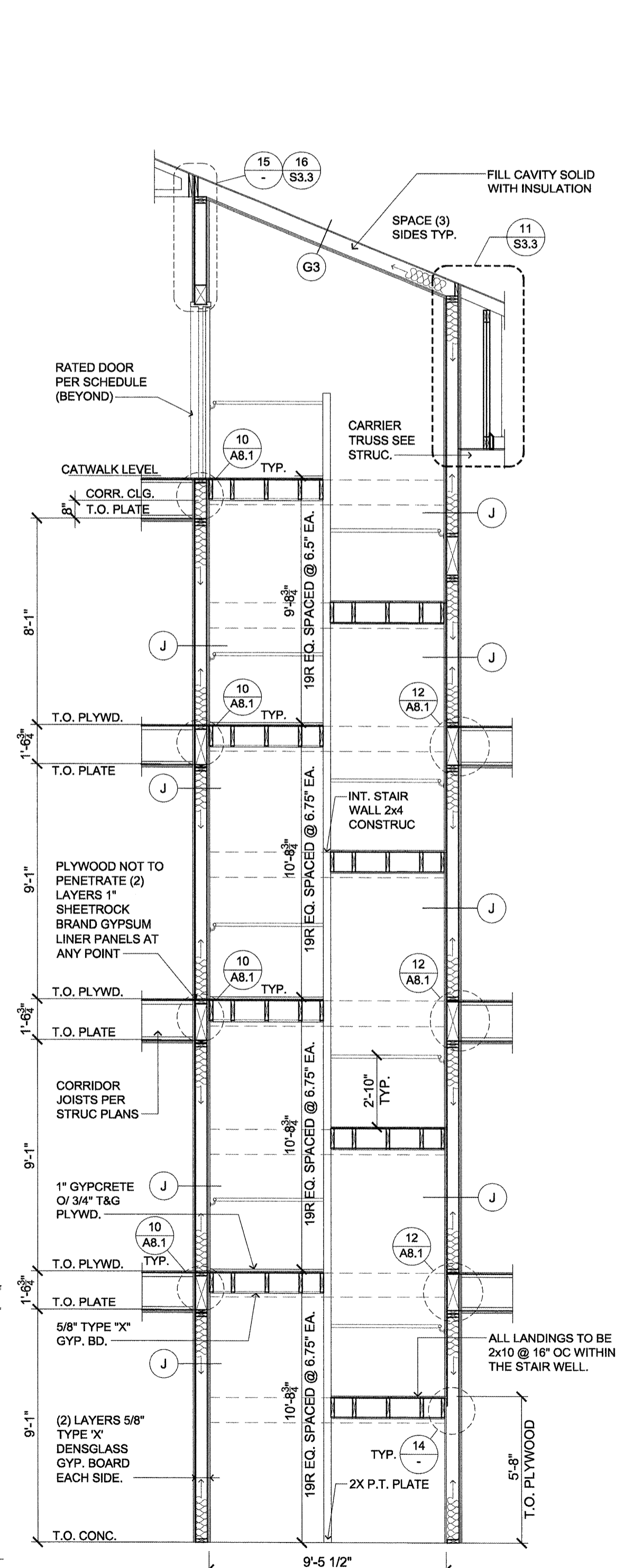
8 INTERIOR ELEVATION
(DINING ROOM STAIR)
SCALE: 1/4" = 1'-0"



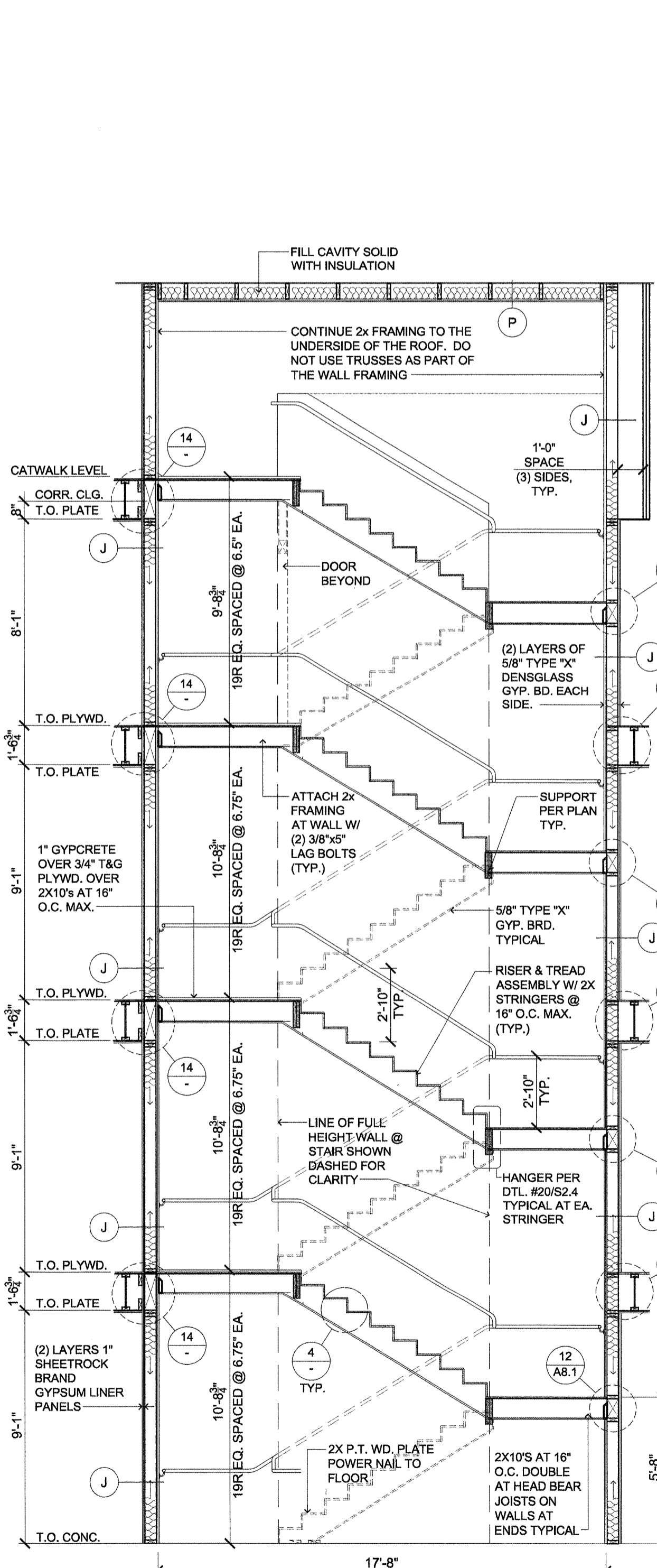
4 TYPICAL STAIR TREAD
(CARPETED STAIRS)
SCALE: 3" = 1'-0"



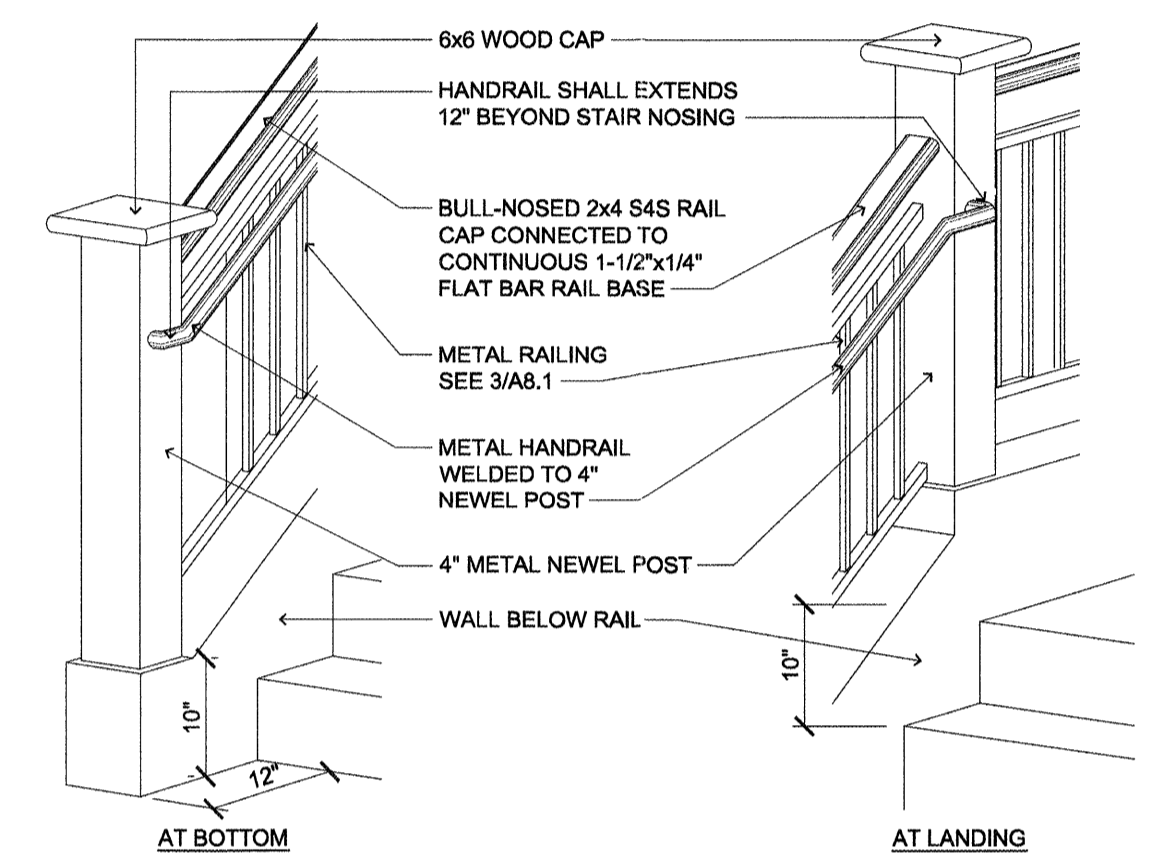
14 FIRE RATING AT STAIR WALL
(FLOOR FRAMING AT STAIR WALL)
SCALE: 1-1/2" = 1'-0"



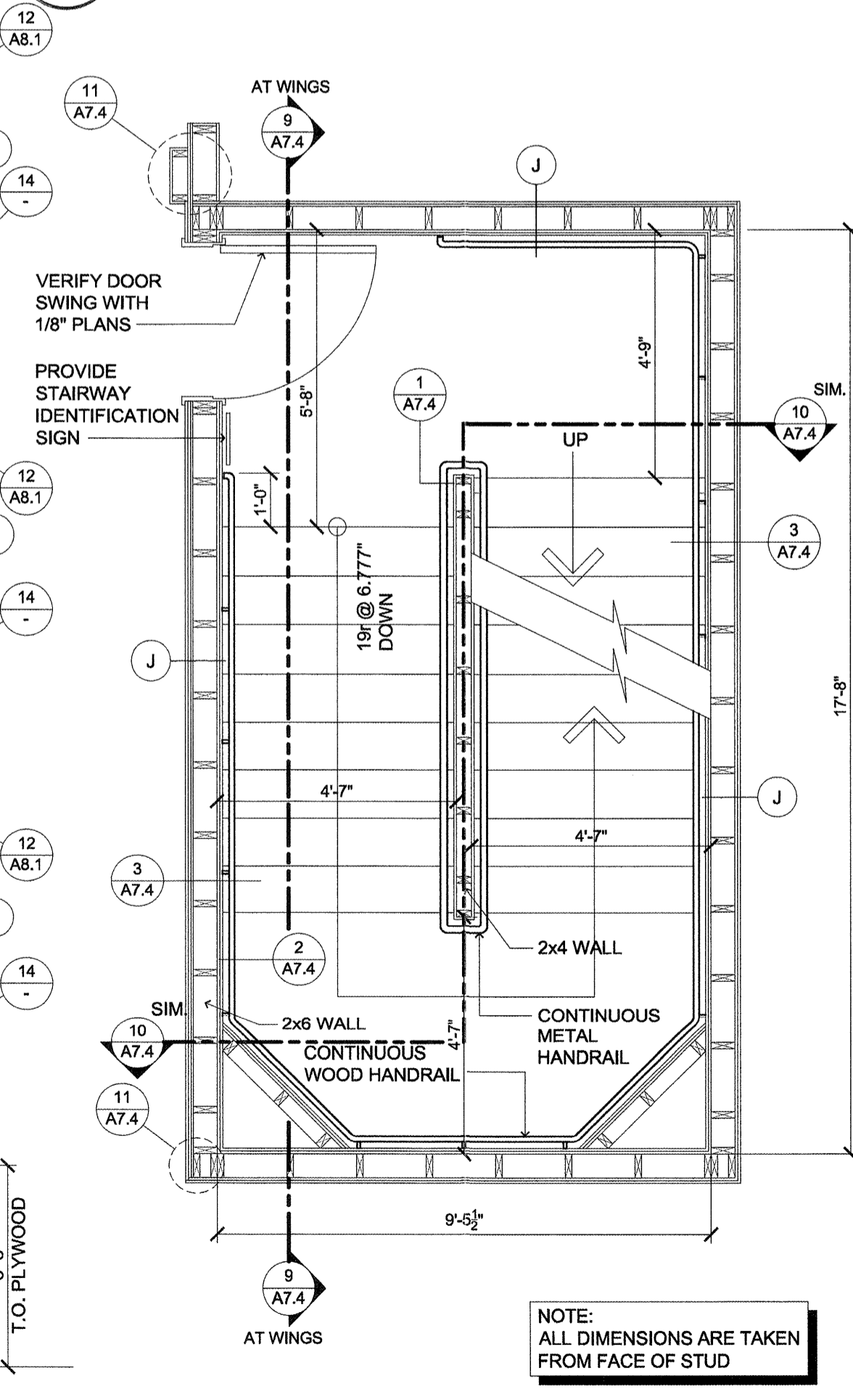
10 STAIR SECTION
(2-HOUR PERPENDICULAR TO CORRIDOR)
SCALE: 1/4" = 1'-0"



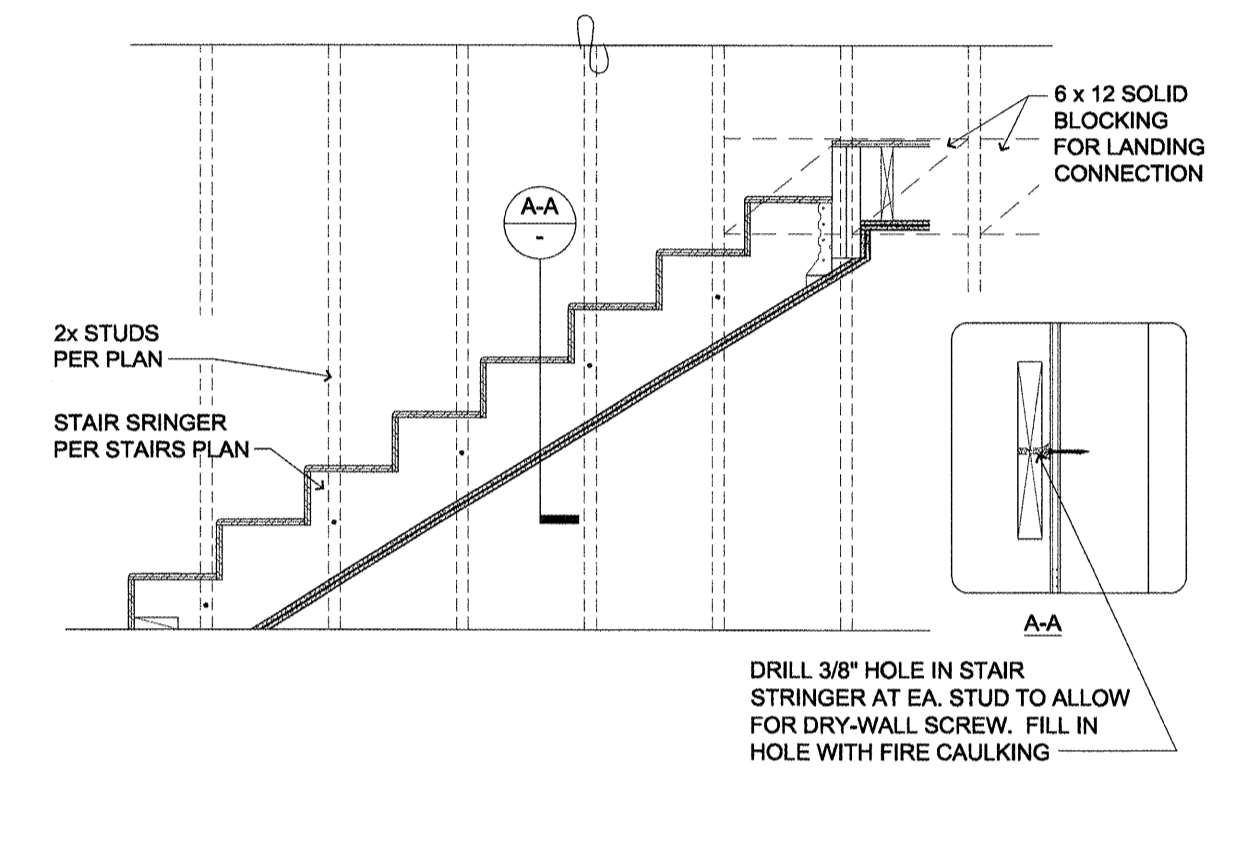
9 INTERIOR STAIR SECTION
(WOOD FRAMING, TYP @ 4-STORY WING ENDS)
SCALE: 1/4" = 1'-0"



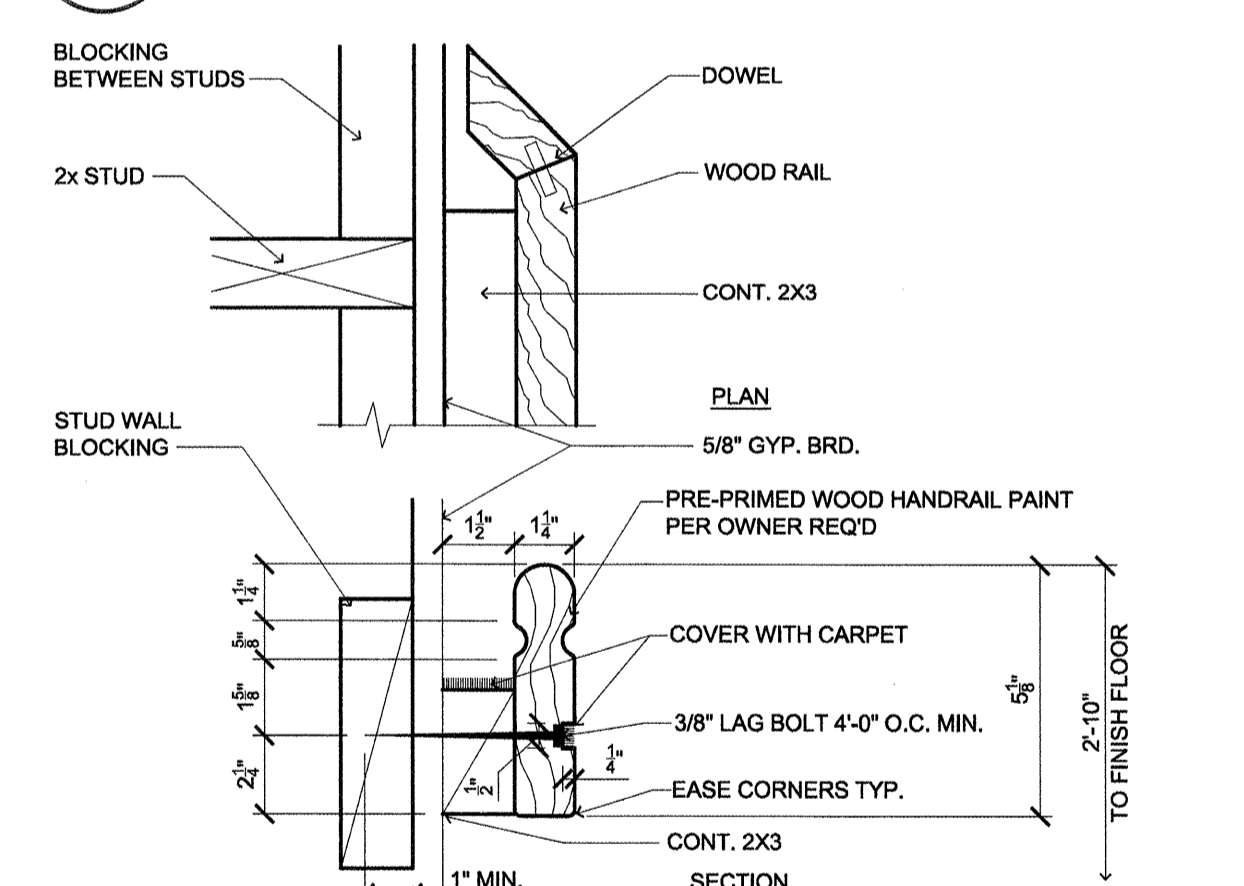
7 RAILING AT STAIR
(AT NEWEL POST)
SCALE: 3/4" = 1'-0"



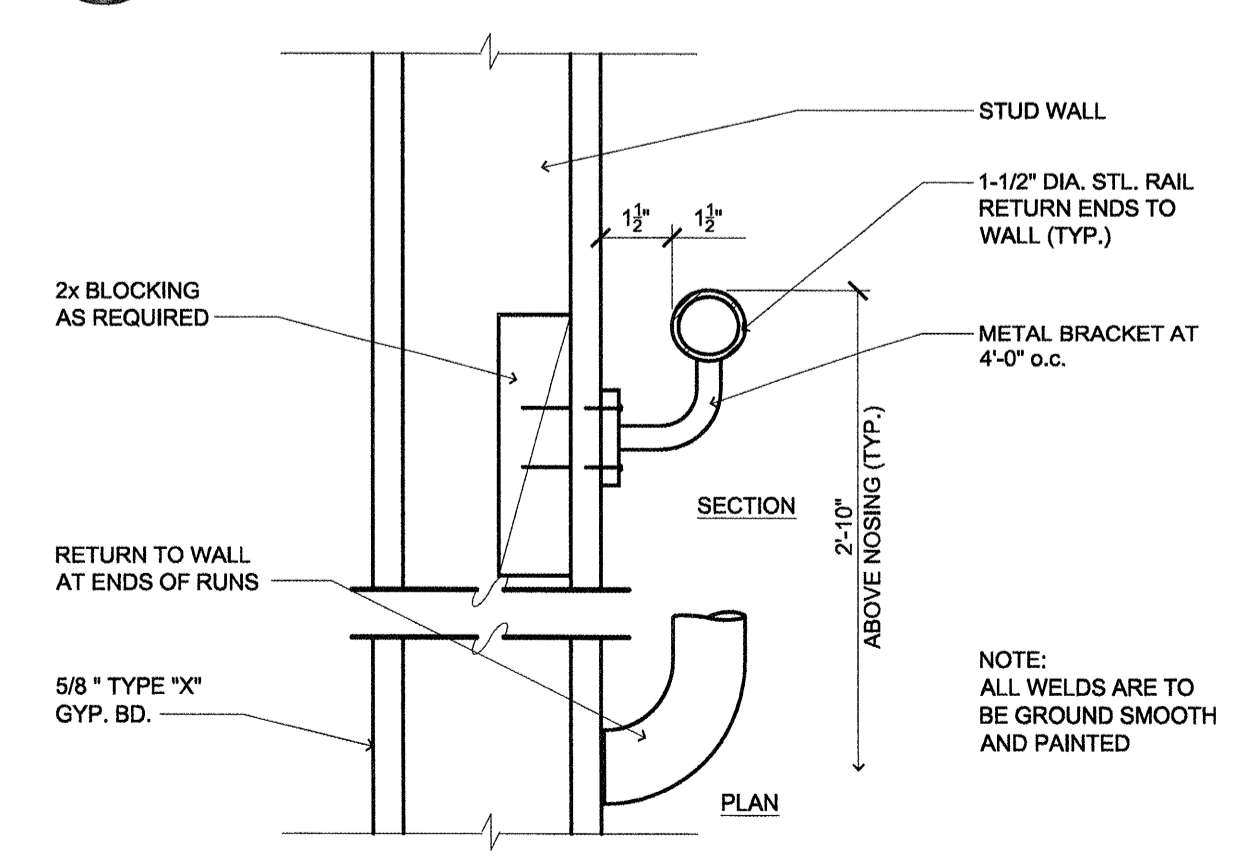
5 INTERIOR STAIR PLAN
(WOOD FRAMING - TYPICAL)
SCALE: 3/8" = 1'-0"



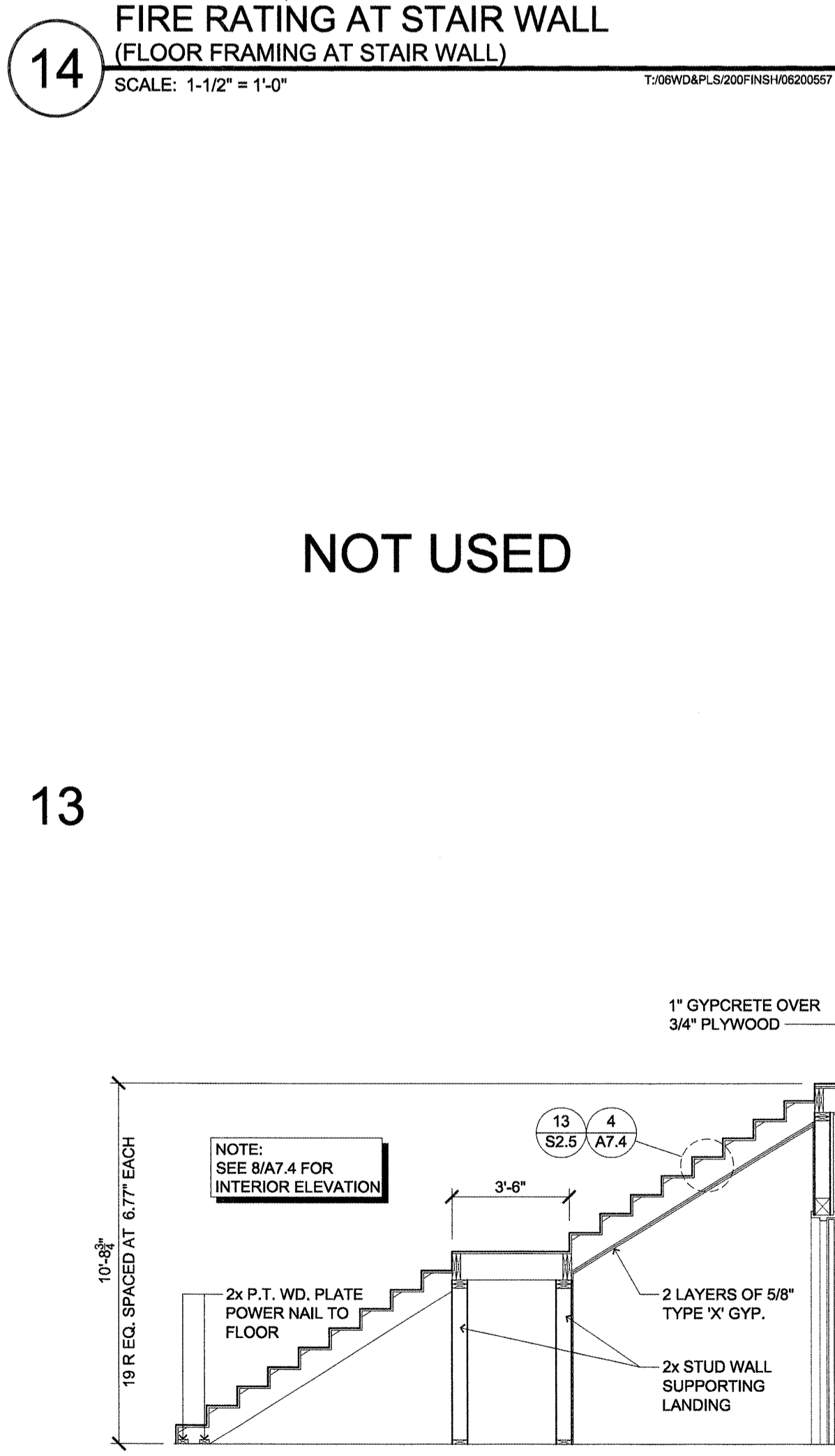
3 INTERIOR STAIR SECTION
(DRYWALL CONNECTION BEHIND STRINGER)
SCALE: 1/2" = 1'-0"



2 CORRIDOR / STAIRWELL HANDRAIL
(WOOD RAILING)
SCALE: 3" = 1'-0"

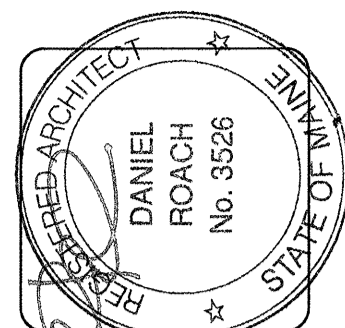


1 STAIR HANDRAIL
(STEEL RAILING)
SCALE: 3" = 1'-0"



12 STRUCTURAL STAIR SECTION
(DINING ROOM STAIR - WOOD FRAMING)
SCALE: 1/4" = 1'-0"

NOT USED



lenity
architecture
3150 Kennebec Street, Suite 200
Portland, ME 04106
Phone: (503) 595-1690

COLSON AND COLSON
GENERAL CONTRACTOR, INC.
2280 McILCHRIST STREET, SUITE 200
SALEM, OREGON, 97302
PHONE (503) 586-7401

PORTLAND
RETIREMENT RESIDENCE
802 OCEAN AVE., PORTLAND, MAINE 04103

STAIR DETAILS

DATE: 8/28/2015
REVISED DATE: 9/22/2015
SHEET: A7.4