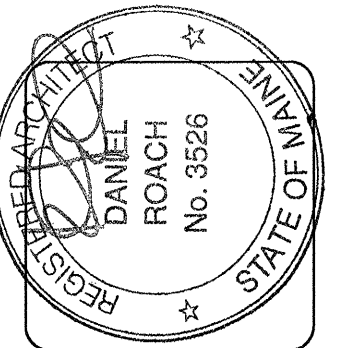


- GENERAL NOTES:**
- REFER TO 2/A8.3a FOR TYPICAL SUITE BATH LAYOUT.
  - FRAME AND WIRE FOR FUTURE PTAC RECEPTACLE ON RIGHT SIDE OF BASEBOARD LOCATION, TO REPLACE BASEBOARD IN "C" UNIT SPARE BEDROOMS.
  - REFER TO PLUMBING DETAILS & GENERAL NOTES / SPECIFICATIONS ON SHEET M2.2 FOR FIRE BARRIER.
  - REFER TO PLUMBING DETAILS ON SHEETS M2.1 & M2.2.
  - 1 1/2" GYP. CRETE FLR. COVERING AT UNIT BATHROOMS TYPICAL ALL UNITS. TRANSITION TO 1" AT CENTER OF DOOR.
  - PROVIDE DRYWALL EXPANSION JOINTS AT CORRIDOR FACE OF ALL COMMON DOORS AND INTERIOR DOOR JAMBS AT TOP FLOOR.
- DOOR DESIGNATION SEE A8.2a  
 ◊ INTERIOR ELEV. SEE A8.3a, A8.3b & A8.4  
 Ⓢ DESIGNATES WALL TYPES SHOWN ON COVER SHEET & A7.1



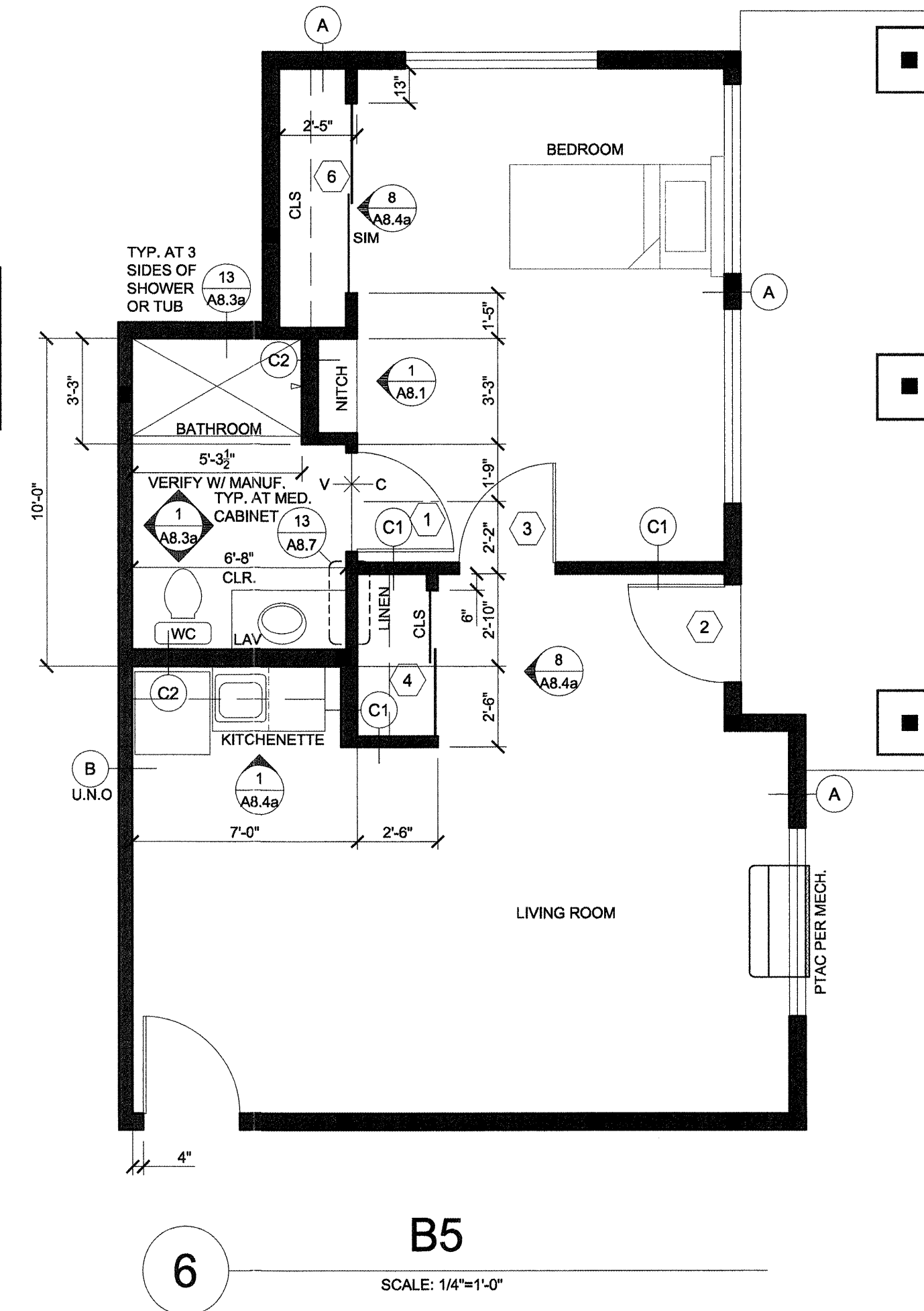
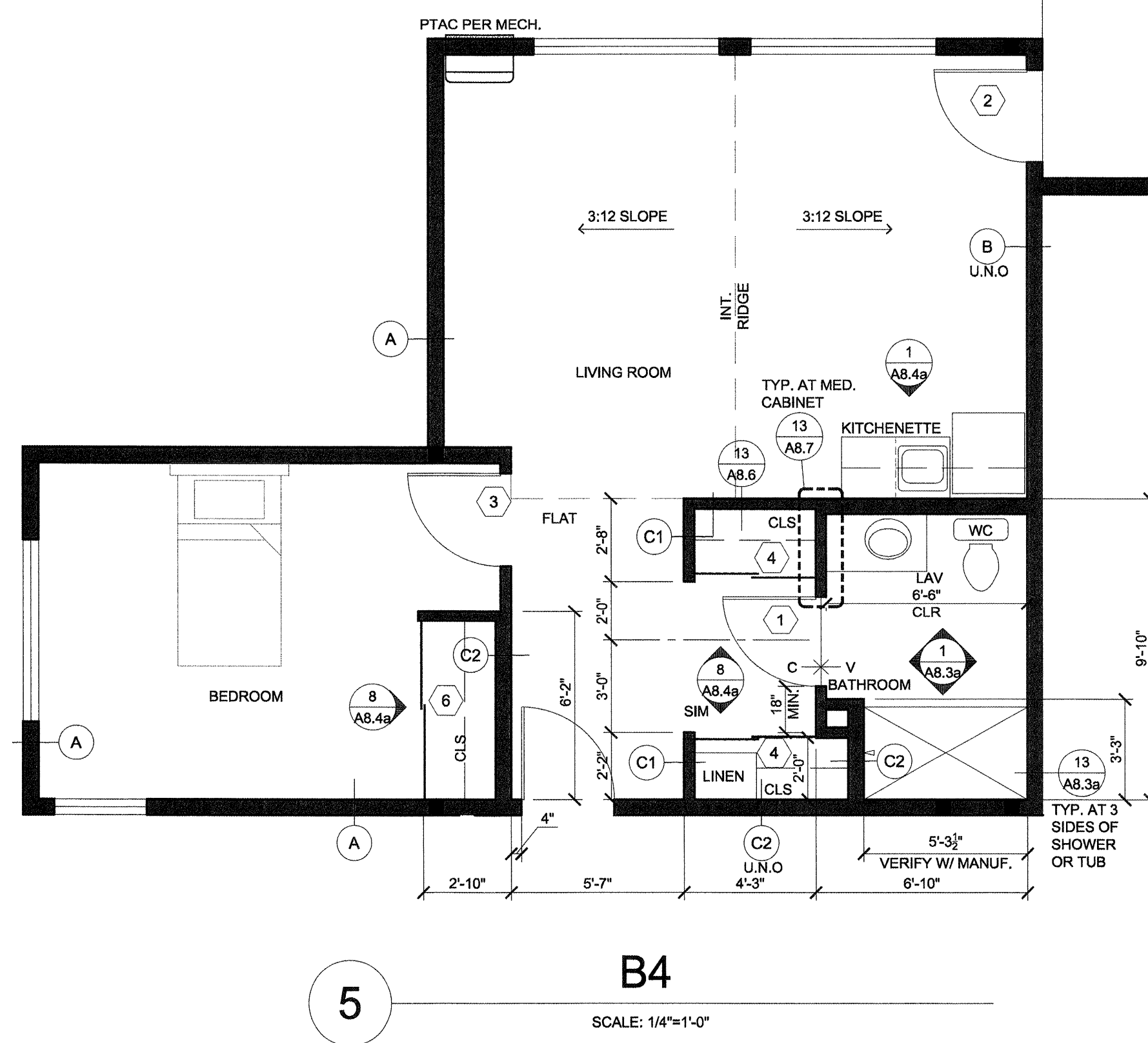
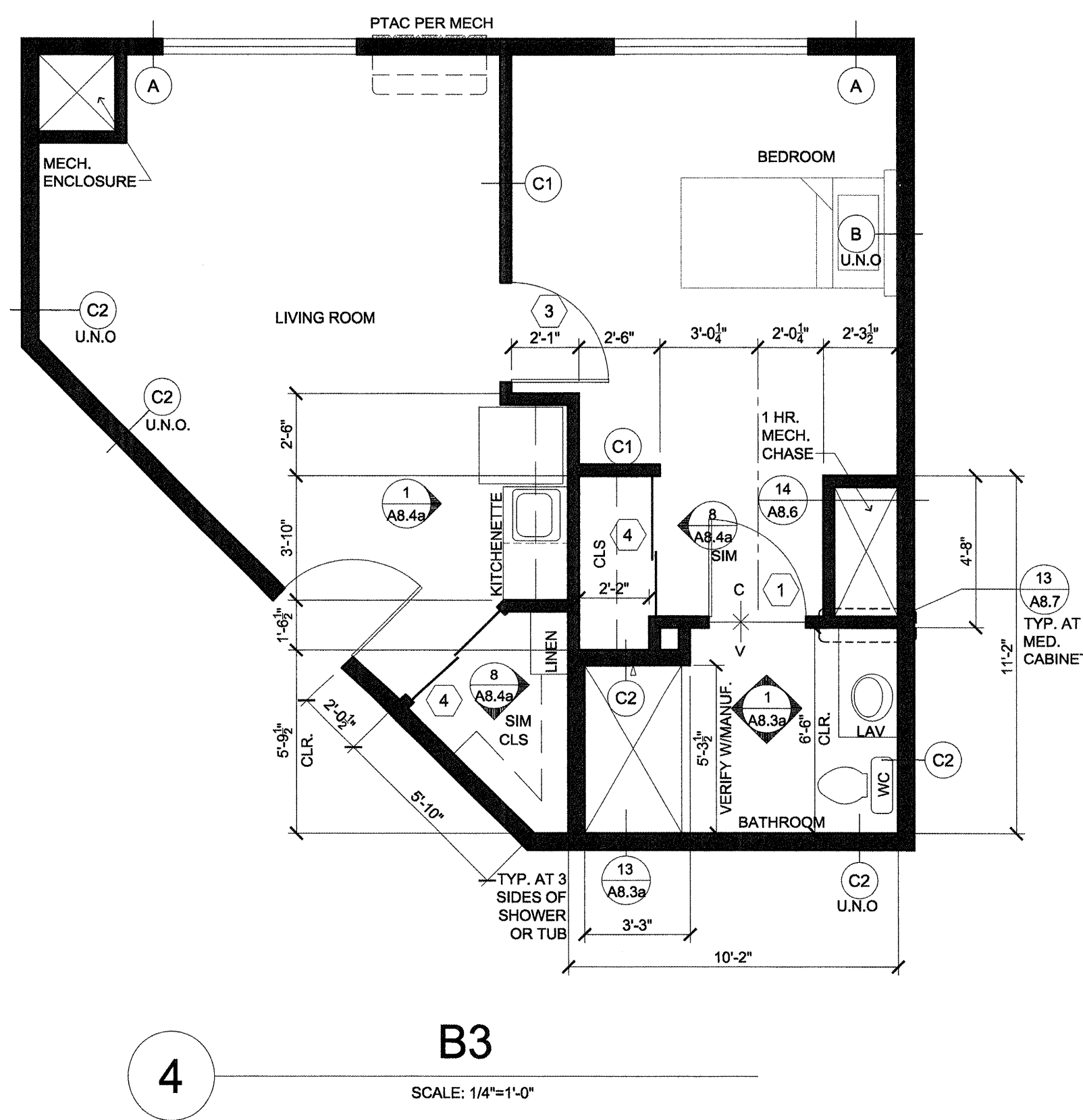
**lenity**  
architecture  
3150 Kettle Cove, SE, Salem, Oregon 97301  
P: 503.399.1090 F: 503.399.0685 W: lenityarchitecture.com

**COLSON AND COLSON**  
GENERAL CONTRACTOR, INC.  
2260 McILCHRIST STREET, SE, SUITE 200  
SALEM, OREGON, 97302  
PHONE (503) 586-7401

**PORTLAND**  
**RETIREMENT RESIDENCE**  
802 OCEAN AVE., PORTLAND, MAINE 04103

**SUITE PLANS**

DATE: 8/28/2015  
REVISED DATE:  
SHEET A5.5



- NOTE: REFER TO A3 SHEETS FOR WINDOW IDENTIFICATION.**
- WALL TYPE "B" AT ALL STORAGE AND LAUNDRY ROOMS**
- NOTE: SEE E5 SHEETS FOR ELECTRICAL LAYOUTS AND M3 SHEET FOR MECH. LAYOUTS OF SUITES**
- ALL UNITS OTHER THAN THOSE IDENTIFIED AS WHEELCHAIR ACCESSIBLE ARE TO BE ADAPTABLE PER FAIR HOUSING ACT/ADA WITH SHOWER ACCESSIBLE CONVERTIBLE SUITES**

s:\m\2015\12\13\2512.PLM - lvs.dwg - 8/28/2015 3:25:21 PM - lvs.dwg - 8/28/2015 3:25:21 PM - lvs.dwg - 8/28/2015 3:25:21 PM