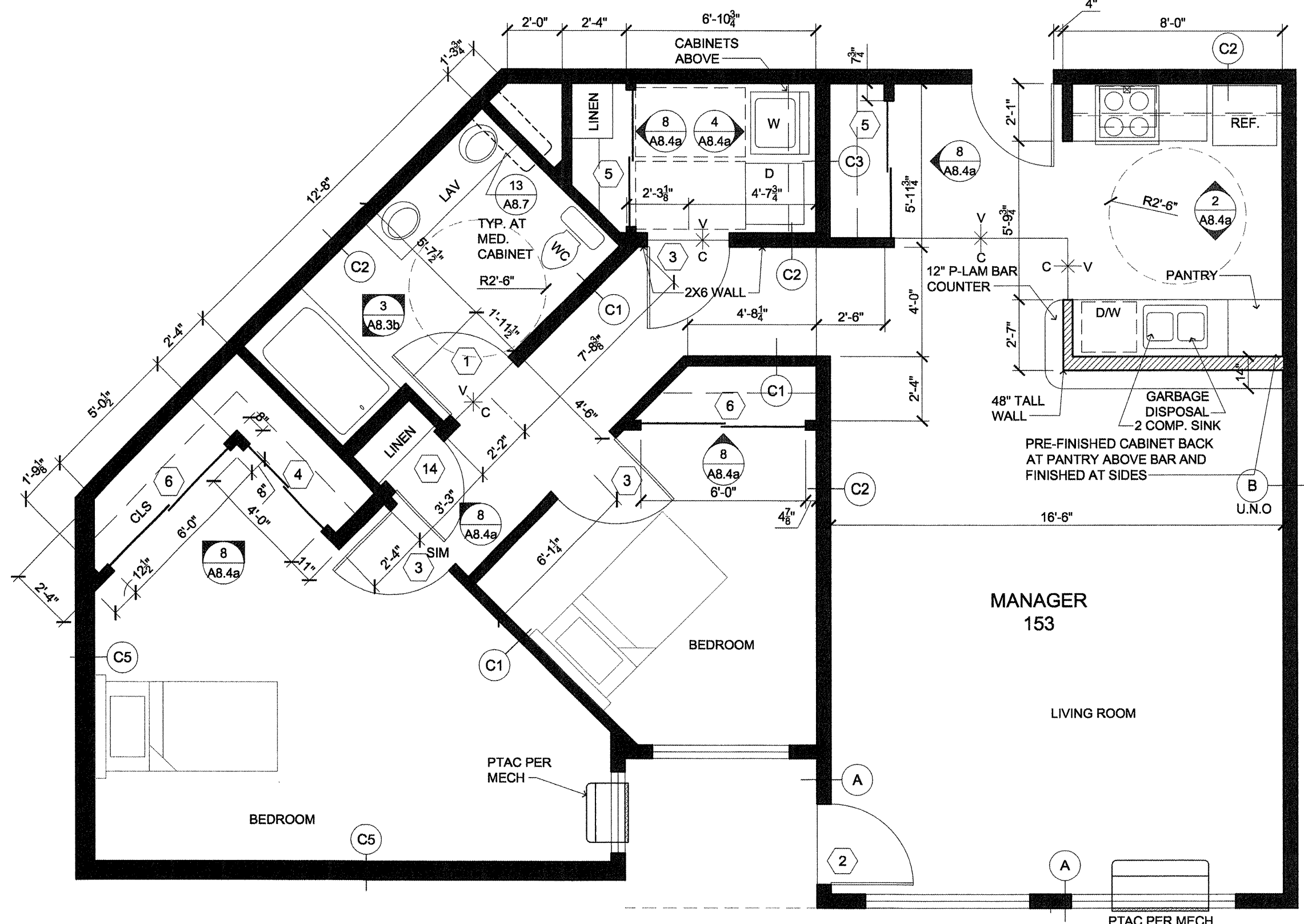
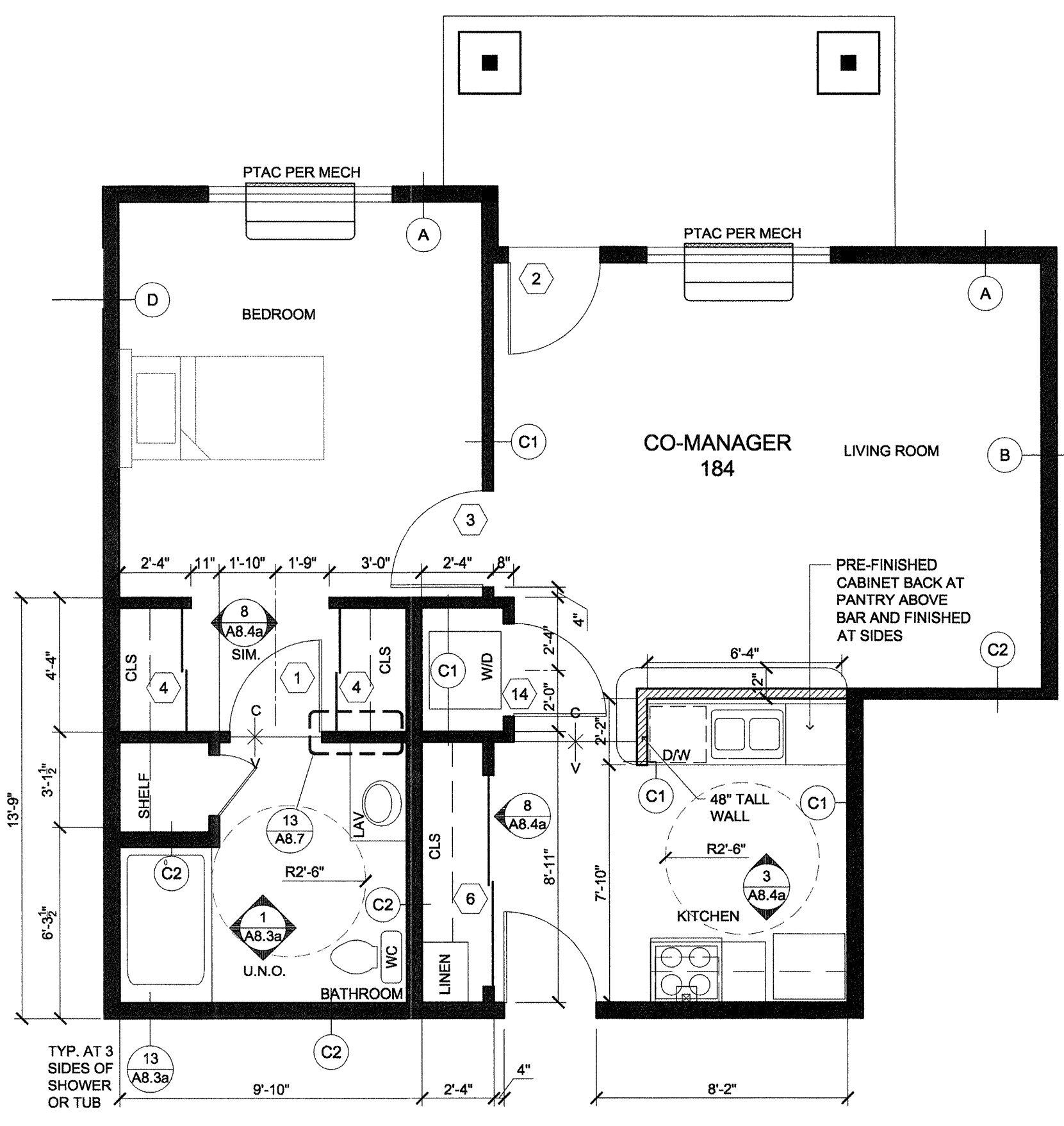


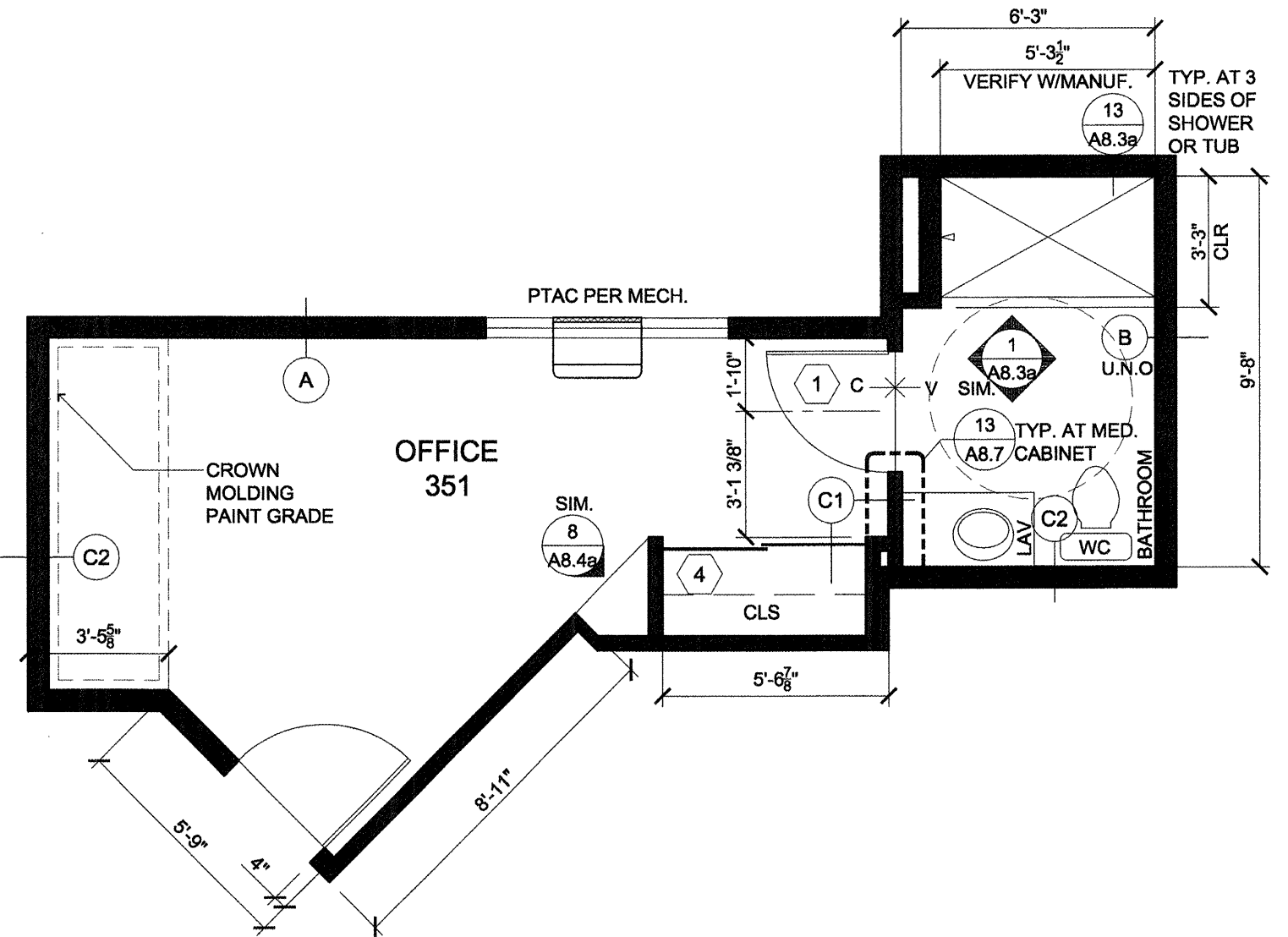
**1 OFFICE / MARKETING**  
SCALE: 1/4"=1'-0"



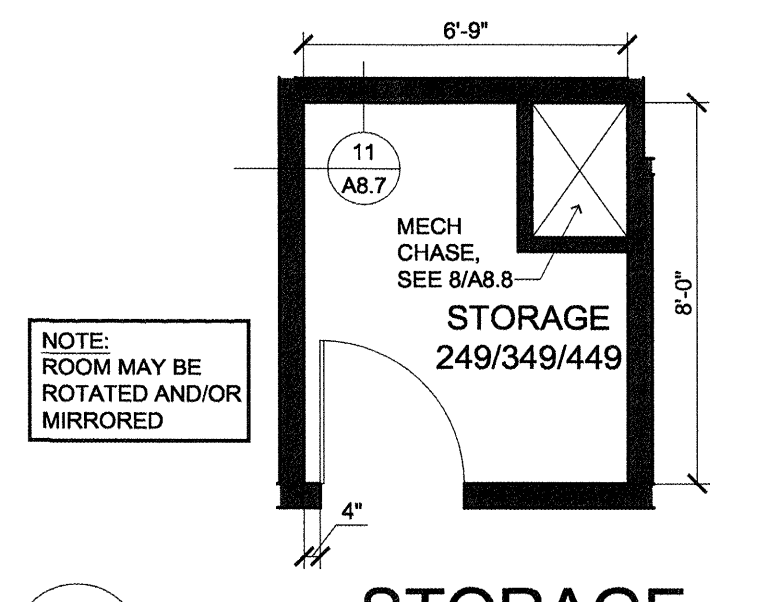
**2 MANAGER**  
SCALE: 1/4"=1'-0"



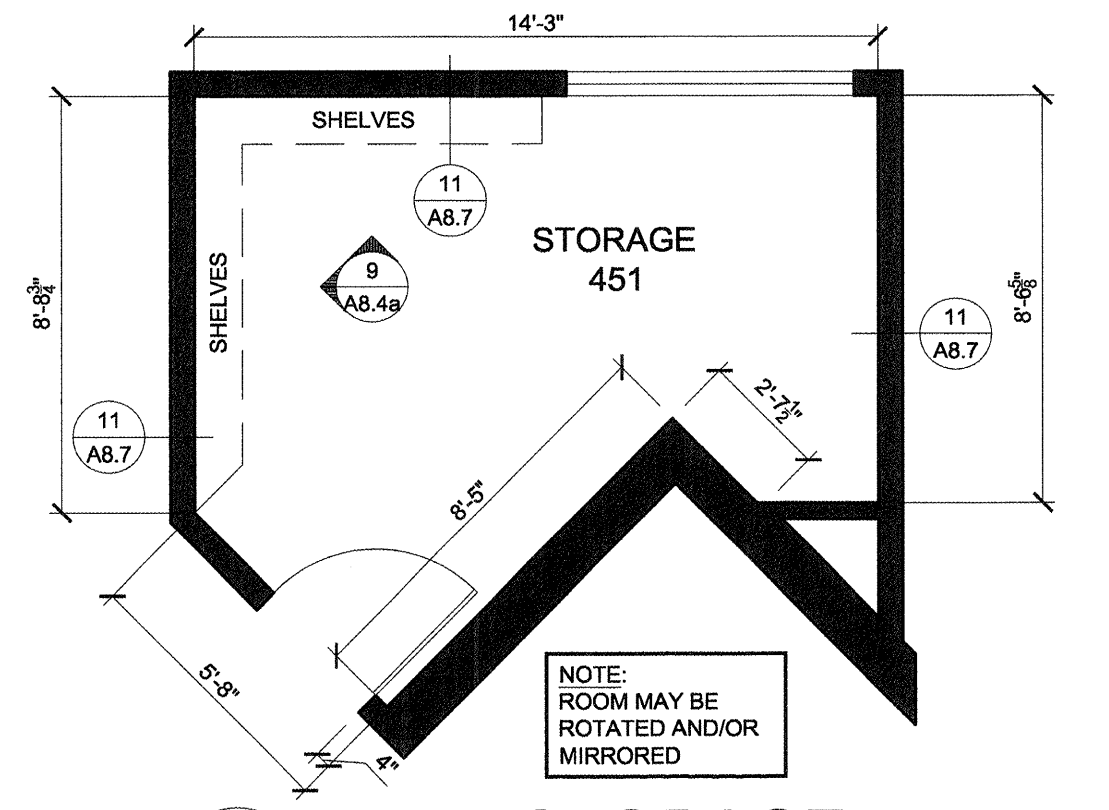
**3 CO-MANAGER**  
SCALE: 1/4"=1'-0"



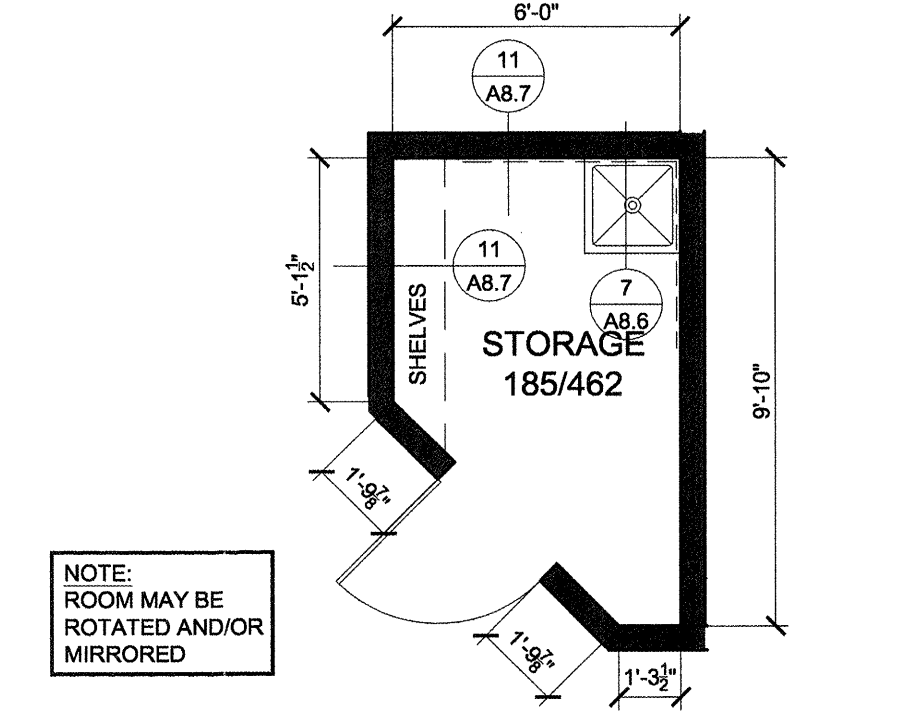
**4 OFFICE**  
SCALE: 1/4"=1'-0"



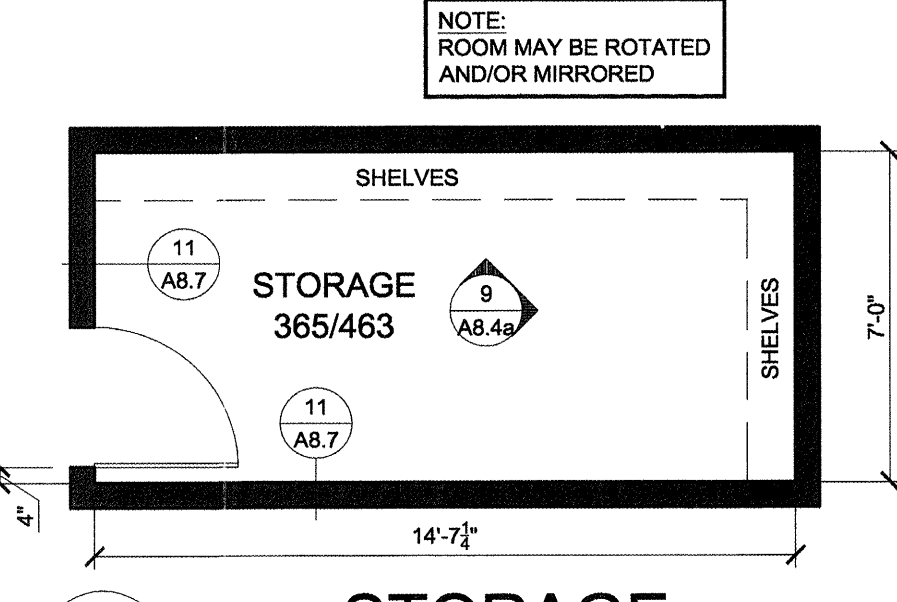
**5 STORAGE**  
SCALE: 1/4"=1'-0"



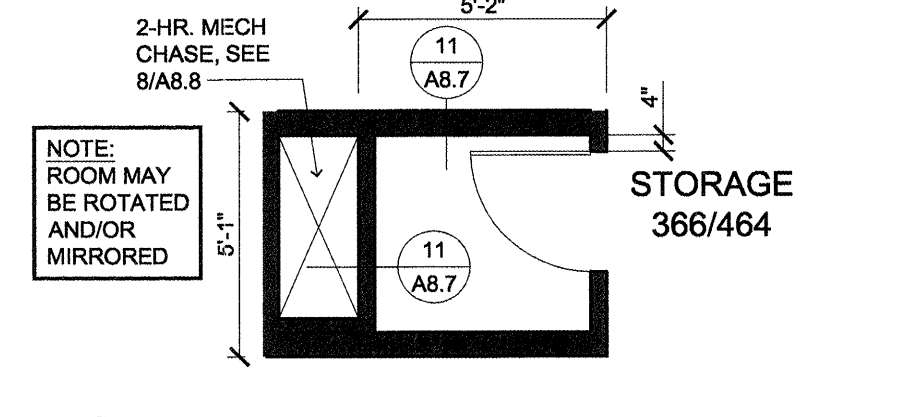
**6 STORAGE**  
SCALE: 1/4"=1'-0"



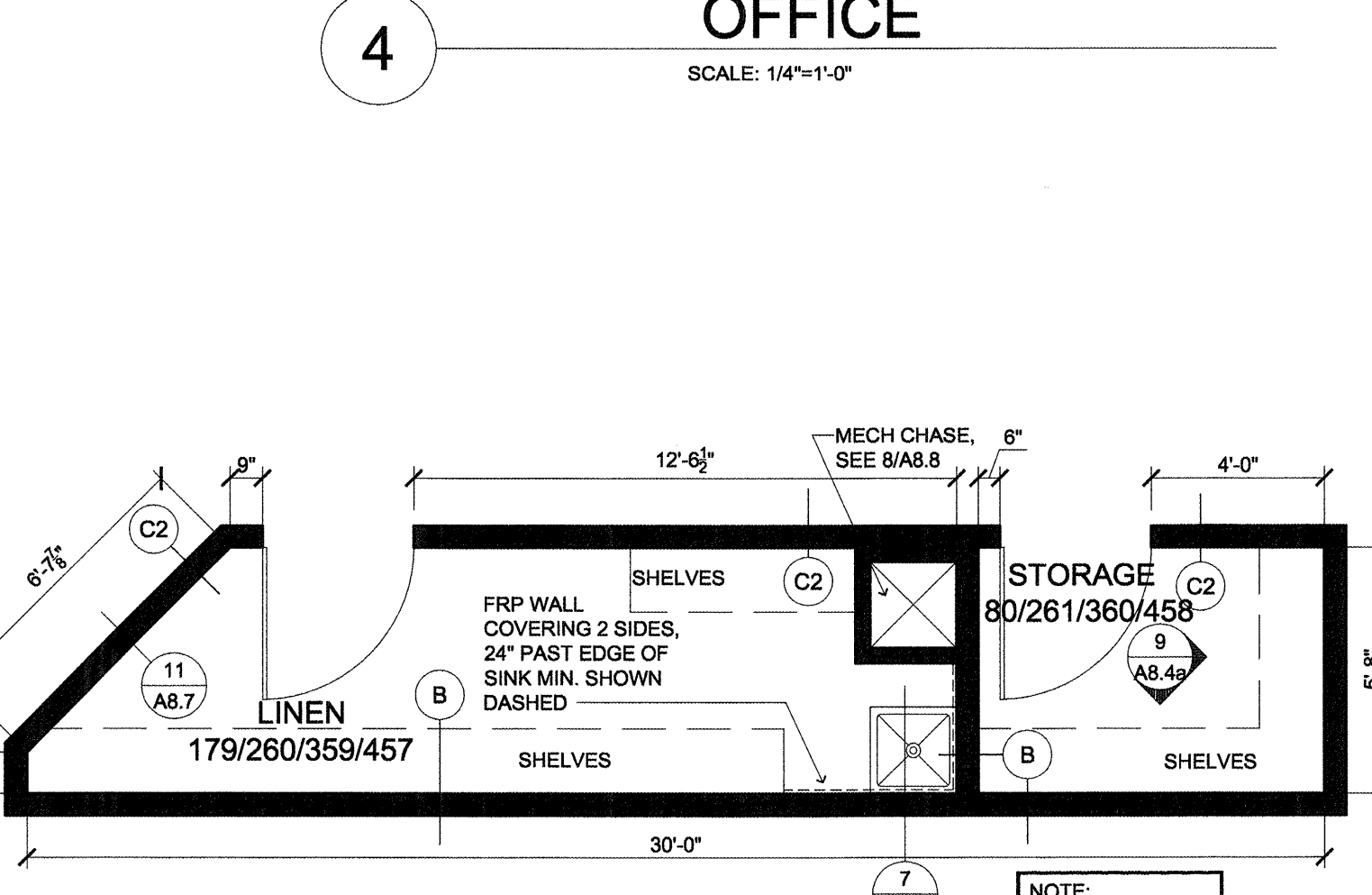
**9 STORAGE**  
SCALE: 1/4"=1'-0"



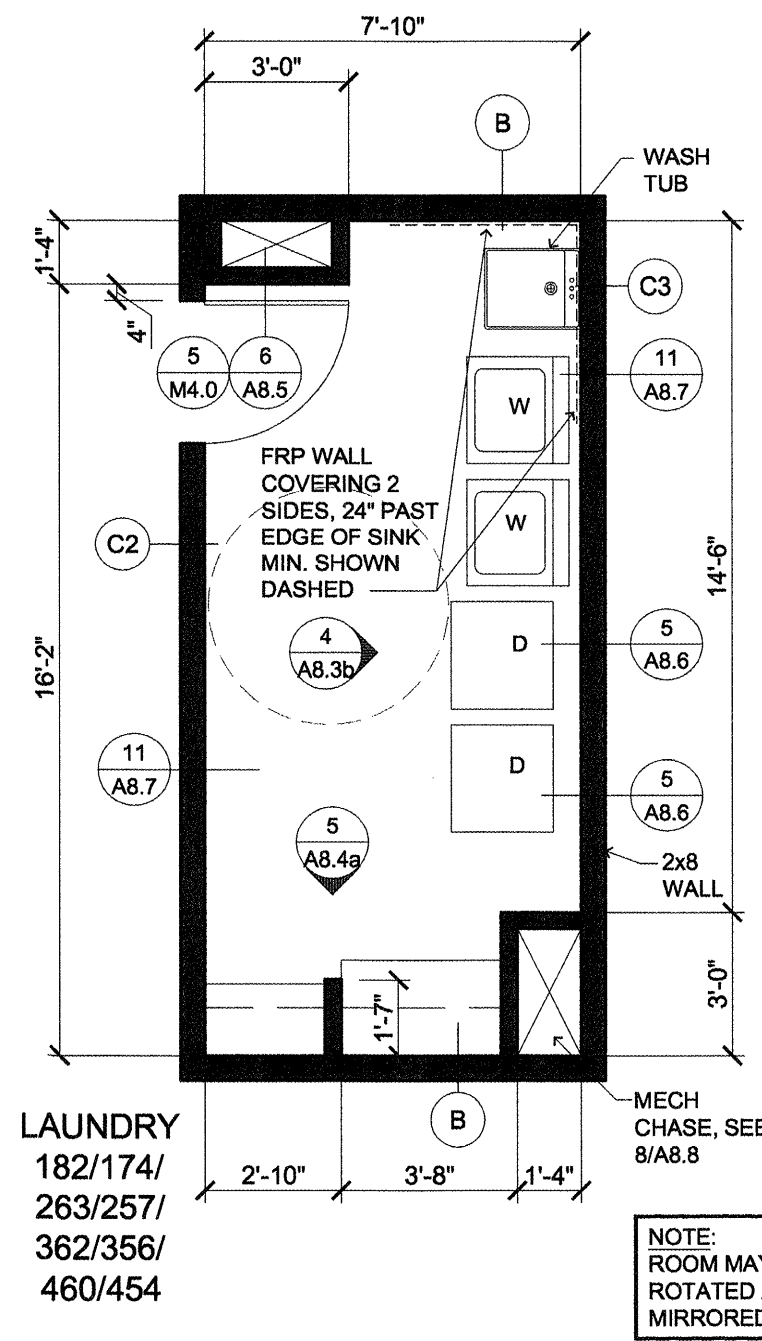
**11 STORAGE**  
SCALE: 1/4"=1'-0"



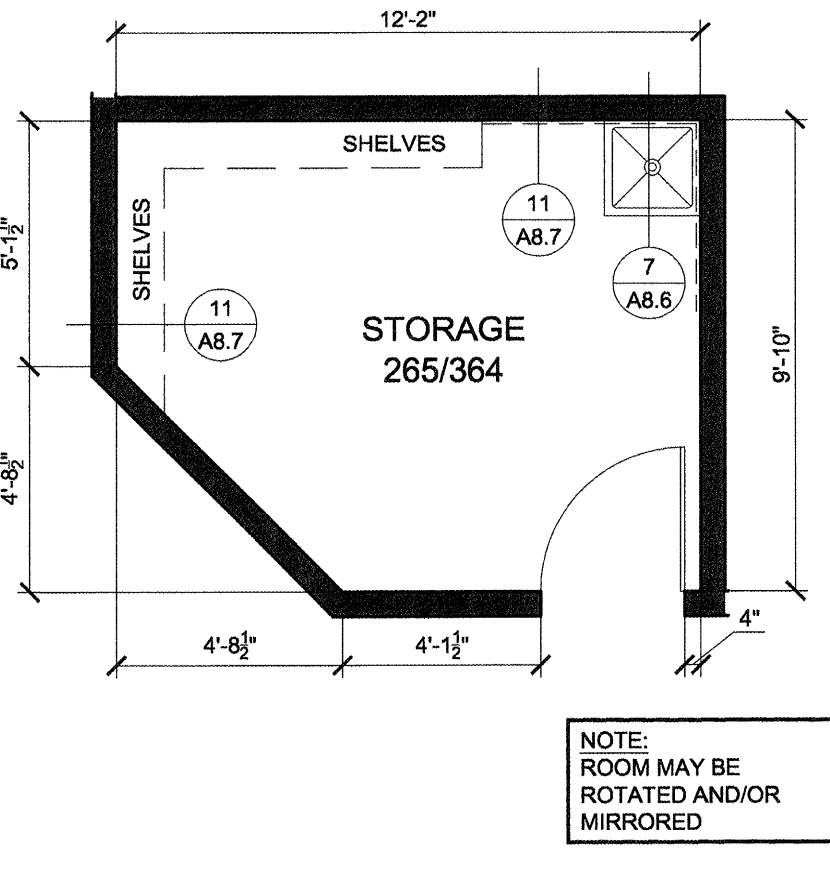
**12 STORAGE**  
SCALE: 1/4"=1'-0"



**7 LINEN/STORAGE**  
SCALE: 1/4"=1'-0"

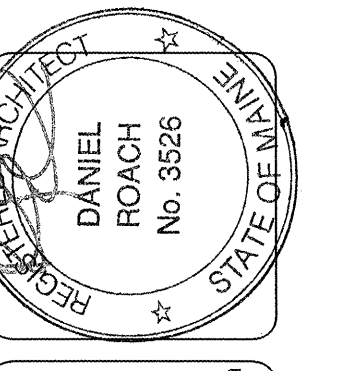


**8 LAUNDRY**  
SCALE: 1/4"=1'-0"



**10 STORAGE**  
SCALE: 1/4"=1'-0"

- GENERAL NOTES:**
- REFER TO 2/A8.3a FOR TYPICAL SUITE BATH LAYOUT.
  - FRAME AND WIRE FOR FUTURE PTAC RECEPTACLE ON RIGHT SIDE OF BASEBOARD LOCATION. TO REPLACE BASEBOARD IN "C" UNIT SPARE BEDROOMS.
  - REFER TO PLUMBING DETAILS & GENERAL NOTES / SPECIFICATIONS ON SHEET M2.2 FOR FIRE BARRIER.
  - REFER TO PLUMBING DETAILS ON SHEETS M2.1 & M2.2.
  - 1 1/2" GYP. CRETE FLR. COVERING AT UNIT BATHROOMS TYPICAL ALL UNITS. TRANSITION TO 1" AT CENTER OF DOOR.
  - PROVIDE DRYWALL EXPANSION JOINTS AT CORRIDOR FACE OF ALL COMMON DOORS AND INTERIOR DOOR JAMBS AT TOP FLOOR.
- DOOR DESIGNATION SEE A8.2a
- INTERIOR ELEV. SEE A8.3a, A8.3b & A8.4
- DESIGNATES WALL TYPES SHOWN ON COVER SHEET & A7.1



**lenity architecture**  
3150 Vertis Court SE, Salem, Oregon 97302  
P: 503 399 1030 F: 503 399 0505

**COLSON AND COLSON**  
GENERAL CONTRACTOR, INC.  
2280 McGILCHRIST STREET SE SUITE 200  
SALEM, OREGON 97302  
PHONE (503) 586-7401

**PORTLAND RETIREMENT RESIDENCE**  
802 OCEAN AVE. PORTLAND, MAINE 04103

**SUITE PLANS**

NOTE: REFER TO A3 SHEETS FOR WINDOW IDENTIFICATION.

WALL TYPE "B" AT ALL STORAGE AND LAUNDRY ROOMS

NOTE: SEE E5 SHEETS FOR ELECTRICAL LAYOUTS AND M3 SHEET FOR MECH. LAYOUTS OF SUITES

ALL UNITS OTHER THAN THOSE IDENTIFIED AS WHEELCHAIR ACCESSIBLE ARE TO BE ADAPTABLE PER FAIR HOUSING ACT/ADA WITH SHOWER ACCESSIBLE CONVERTIBLE SUITES

DATE	8/28/2015
REVISED DATE	9/22/2015
	2/2/2016

**SHEET**  
**A5.1**