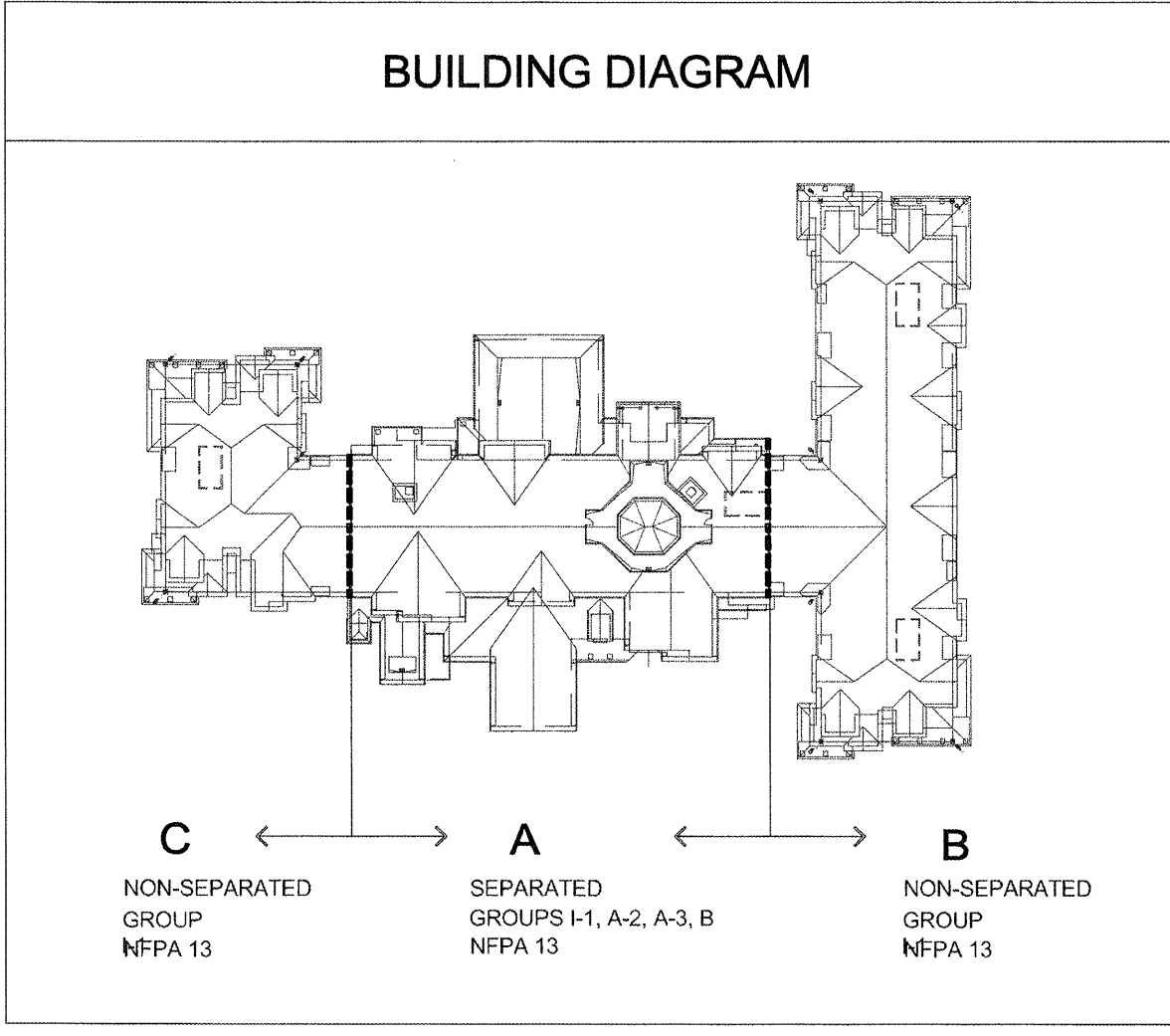
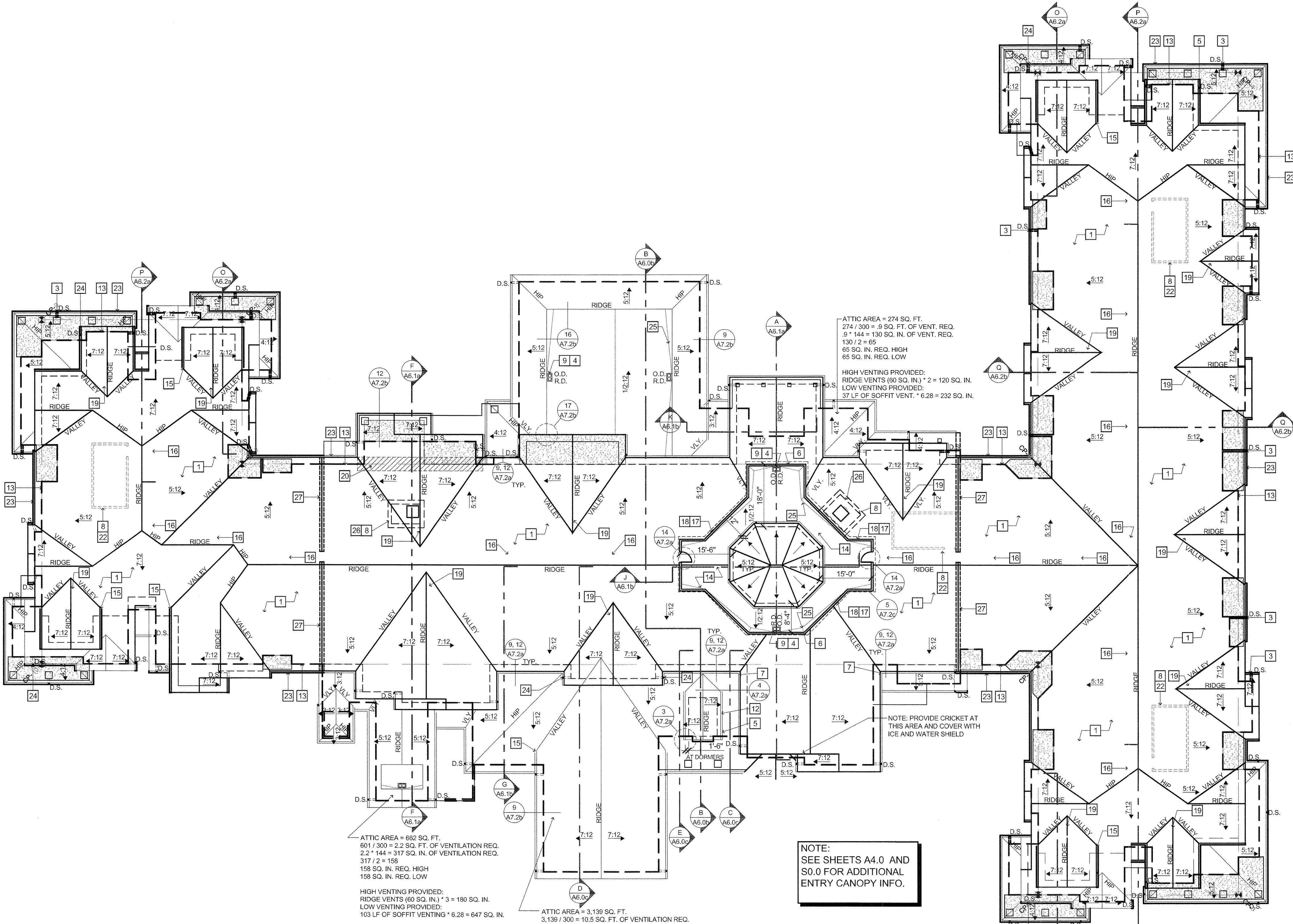


- ### KEY NOTES
- CLASS "A" ARCH. COMP ASPHALT SHINGLE ROOFING. SEE DETAIL 1/A7.2a
  - BUILT UP SHAFT FOR MECHANICAL LOUVER. SEE DETAIL 6/A7.2c
  - ROOF DRAINS HARD PIPED TO STORM SEWER. OVERFLOW DRAINS TO BOTTOM OF SOFFIT.
  - MOUNT DRAINS INTO 2" DEEP WELL CANT ALL EDGES TYP.
  - DOWNSPOUT TO RUN DOWN ROOF ALONG DORMER TO EDGE. TYP.
  - PARAPET WALL 8" ABOVE RIDGE W/ 24 GA. CAP FLASHING (TYP).
  - SPLASH BLOCK
  - 2 HR WALL TO UNDERSIDE OF ROOF SH'T'G.
  - 3" DIA. OVERFLOW TO DAYLIGHT AT SOFFIT TRIM OPENING W/ G.I. ESCUTCHEON TYPICAL AT ROOF DRAINS.
  - RANGE EXHAUST SEE DETAIL 3/M4.1.
  - MECH. EQUIPMENT ON ROOF SEE M4.2
  - HEAT TAPE THIS AREA
  - (1) LAYER 5/8" TYPE "C" EXT. GYP. SH'T'G. OVER RC. ASSEMBLY 'G1'
  - BUILT-UP ROOFING. SEE DETAIL 2/A7.2a
  - OPEN END GUTTERS.
  - POWER VENTS SEE MECHANICAL
  - CANT STRIP (TYP.) SEE DETAIL 2/A7.2a
  - RAKE. SEE DETAILS S 12, 17/A7.2a AND 1/A7.2b - 6/A7.2b
  - PROVIDE 22"x30" CUT OUT AT EACH HIGH POINT OF GABLE FOR VENTING. TYPICAL OF ALL GABLES.
  - ROOF SHEATHING THIS AREA TO BE CONT. TO EXTERIOR WALL UNDER OVER-FRAMING SEE DETAIL 10/A7.2b.
  - 8'-1" TOP OF PLATE ABV. F.F. AT TOP FLOOR
  - LINE OF STAIR WALL BELOW
  - SEE DETAIL 9/A6.5 FOR GUTTER TERMINATION. (AT DECK LOCATION)
  - D.S. TO ROOF BELOW.
  - CRICKET
  - LINE OF ELEVATOR BELOW
  - FIREWALL BELOW
- KEYNOTES INDICATED ABOVE ARE APPLICABLE FOR THE ROOF PLAN SHEET ONLY



ATTIC VENTING CALCULATIONS		
BUILDING C	BUILDING A	BUILDING B
<b>Venting</b>	<b>Venting</b>	<b>Venting</b>
Building 'C' Attic Area = 5,925 SQ FT	Building 'A' Attic Area = 12,816 SQ FT	Building 'B' Attic Area = 13,445 SQ FT
0.2 CFM Required per IMC	0.2 CFM Required per IMC	0.2 CFM Required per IMC
Building 'C' CFM required = 1,185 CFM	Building 'A' CFM required = 2,563 CFM	Building 'B' CFM required = 2,689 CFM
Power Cool 12 Vents required = 2	Power Cool 12 Vents required = 3	Power Cool 12 Vents required = 3
Power Cool 12 Vents Provided = 4	Power Cool 12 Vents Provided = 4	Power Cool 12 Vents Provided = 8
<b>Make-Up Air</b>	<b>Make-Up Air</b>	<b>Make-Up Air</b>
Make-Up Air Required Based On 4 Power Vents = 4,680 CFM	Make-Up Air Required Based On 4 Power Vents = 4,680 CFM	Make-Up Air Required Based On 8 Power Vents = 9,360 CFM
CFM Provided by 399 L/F of Soffit Venting (6.28 SQ IN Per L/F) = 5,223 CFM*	CFM Provided by 520 L/F of Soffit Venting (6.28 SQ IN Per L/F) = 6,807 CFM*	CFM Provided by 768 L/F of Soffit Venting (6.28 SQ IN Per L/F) = 10,053 CFM*
CFM Provided by Ridge Vents (60 SQ IN Per Vent) = 0 CFM*	CFM Provided by Ridge Vents (60 SQ IN Per Vent) = 0 CFM*	CFM Provided by Ridge Vents (60 SQ IN Per Vent) = 0 CFM*
<b>Total Make-Up Air Provided = 5,223 CFM</b>	<b>Total Make-Up Air Provided = 6,807 CFM</b>	<b>Total Make-Up Air Provided = 10,053 CFM</b>
*Based on 300 FPM face velocity	*Based on 300 FPM face velocity	*Based on 300 FPM face velocity

### GENERAL NOTES:

- REFER TO DETAIL 10/A7.2a FOR VENT PIPE PENETRATIONS AT ROOF.
- DRAFT STOPS
- PROVIDE FALL ARREST HOOKS PER MANUF. SPECIFICATIONS AND LOCAL CODES O.S.H.A.
- FOR ATTIC LIGHTING AND POWER LAYOUT. SEE "E" SHEETS.
- REFER TO MECH. AND ELEC. PLANS FOR POWER ATTIC FAN LOCATIONS (NOTE: AT LEAST 1 POWER FAN IN EACH DRAFT STOP AREA).
- REFER TO ATTIC DRAFT STOP AND VENTING SHEETS FOR ROOF VENTS.

### SYMBOLS LEGEND:

- ROOF SLOPE INDICATED ON PLAN
- DOWN SPOUT: 3" x 4" TYPICAL
- WALL TYPE DESIGNATION - SEE A7.1 SHEETS.
- 12" SQUARE ROOF VENT W/ 9/16" OPENING. COLOR TO MATCH ROOFING
- POWER VENT LOCATION - SEE DETAIL 15/E2.3 AND EQUIPMENT SCHEDULE ON M4.2 FOR EF-9 SPECS.

### LEGEND

- ACCESSIBLE SUITE
- TUB/SHOWER
- ROLL-IN SHOWER
- CONTROL POINT
- RATED FIRE WALL/FIRE BARRIER SEE SHEET A8.7 FOR DETAILS
- ONE HOUR PARTITION

ROOF PLAN  
1/16"=1'-0"