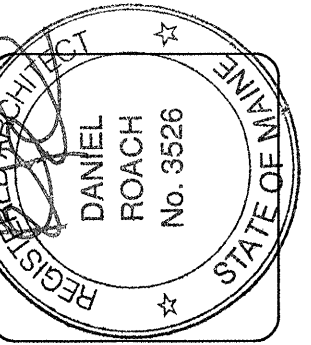


NOTE:
THIS IS ANI-1 OCCUPANCY FACILITY AND IS NOT REQUIRED TO BE LICENSED. STAFF DOES NOT PROVIDE RESIDENTS WITH ASSISTANCE WITH BATHING, OR MEDICATION DISPENSING.



lenity
architecture

3150 Vertice Court, SE, Salem, Oregon 97301
P: 503 399 1090 F: 503 399 0585 W: lenityarchitecture.com

COLSON AND COLSON
GENERAL CONTRACTOR, INC.
2280 McILCHRIST STREET SE, SUITE 200
SALEM, OREGON, 97302
PHONE (503) 586-7401

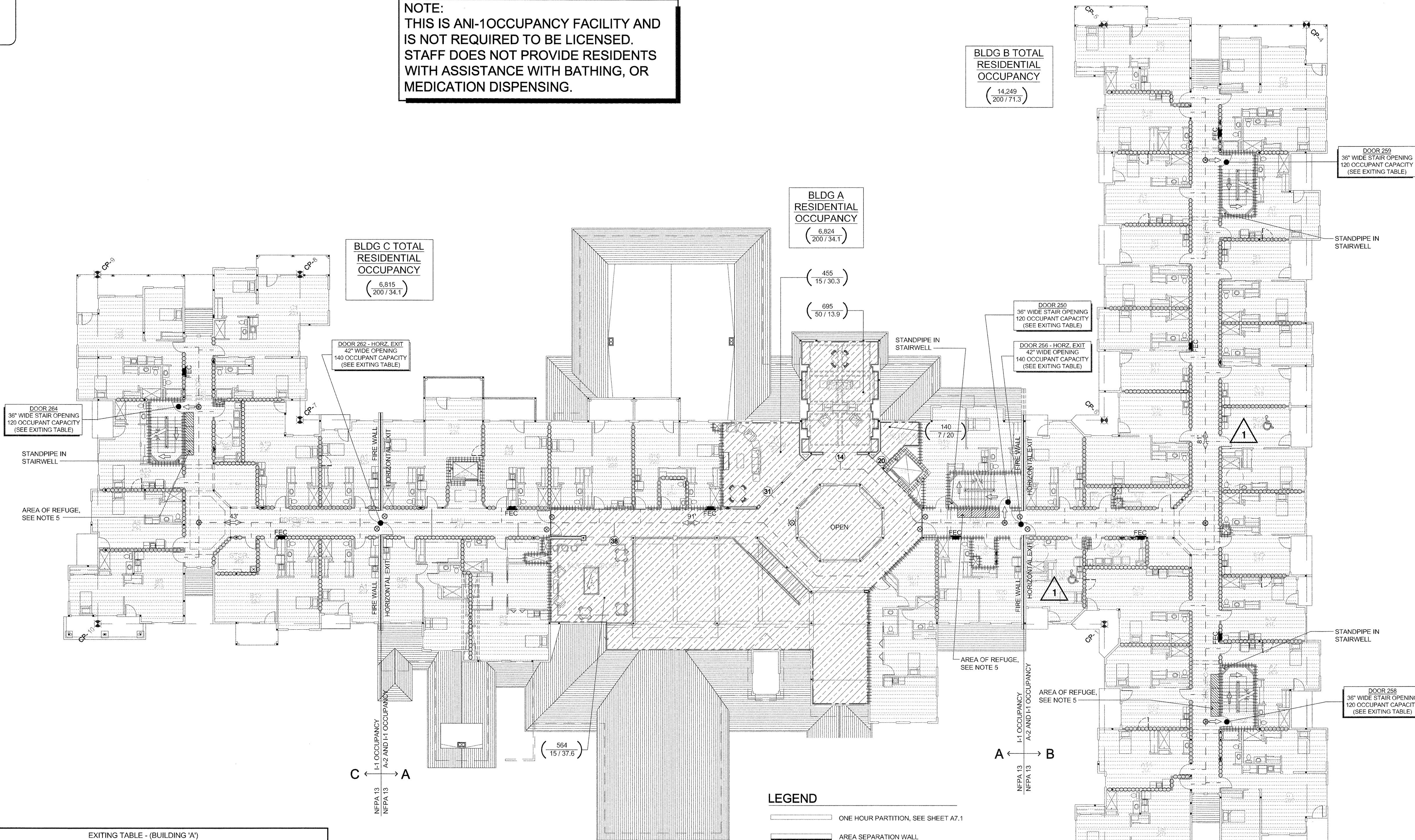
PORTLAND
RETIREMENT RESIDENCE
802 OCEAN AVE., PORTLAND, MAINE 04103

SECOND FLOOR
EGRESS
PLAN

DATE
8/28/2015

REVISED DATE
9/22/2015

SHEET
A0.2



BLDG B TOTAL RESIDENTIAL OCCUPANCY
(14,249 / 200 / 71.3)

BLDG A RESIDENTIAL OCCUPANCY
(6,824 / 200 / 34.1)

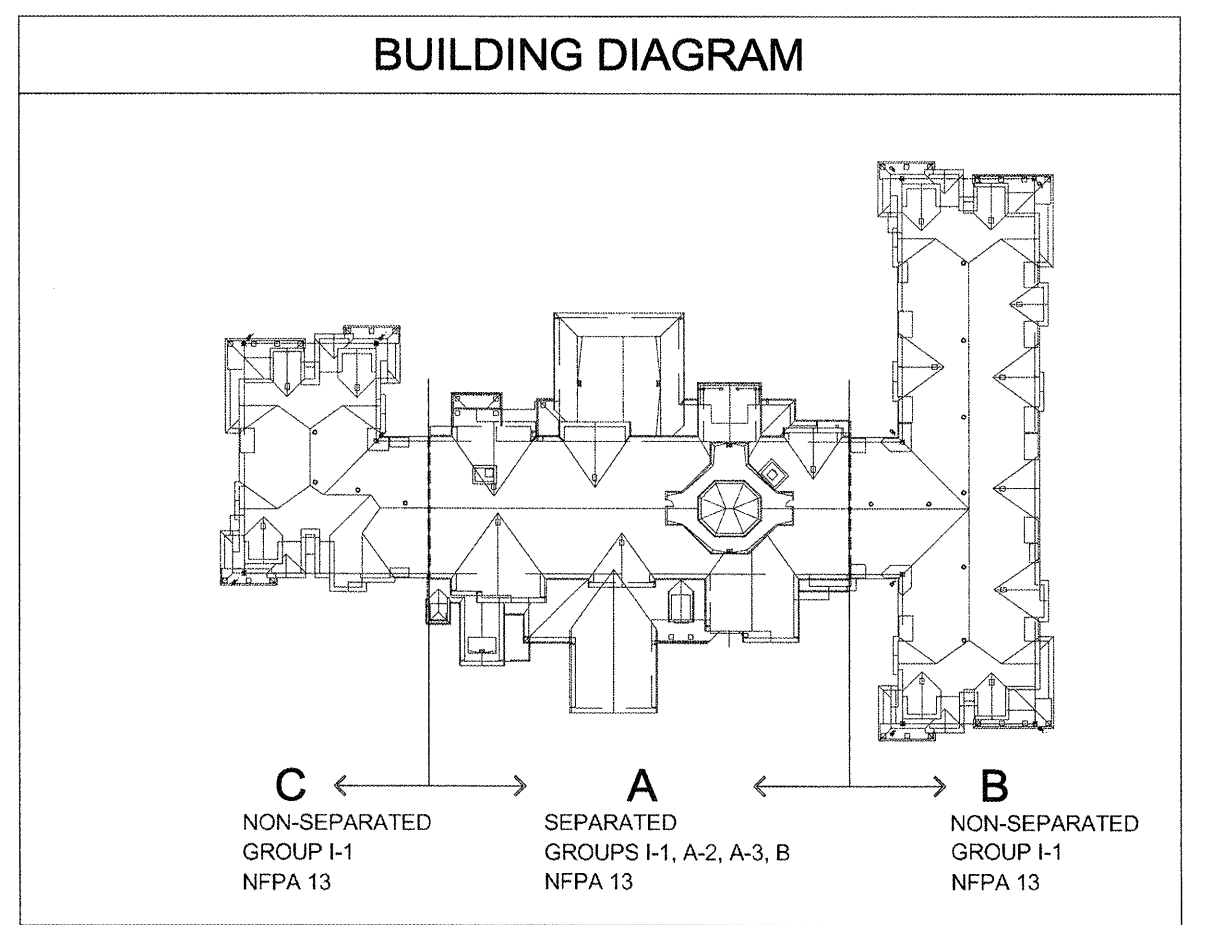
BLDG C TOTAL RESIDENTIAL OCCUPANCY
(6,815 / 200 / 34.1)

- LEGEND**
- ONE HOUR PARTITION, SEE SHEET A7.1
 - AREA SEPARATION WALL RATED FIRE WALL - HORIZONTAL EXIT, SEE SHEET A7.1
 - PATH OF EGRESS
 - EXIT TO PUBLIC WAY (SHOWING OCCUPANT LOAD AT EXIT AND EXITING DIM. REQ'D)
 - ④ OCCUPANT LOAD EXITING FROM SPACE OR BUILDING
 - ☒ FIRE EXTINGUISHER CABINET. FIRE EXTINGUISHERS PLACED NOT TO EXCEED A MAXIMUM OF 75 FEET OF TRAVEL DISTANCE.
 - EXIT ROUTE w/ ARROWS POINTING TOWARD EXITS (TRAVEL DISTANCE TO EXIT IS LABELED ABOVE ARROW)
 - ⊗ EXIT LIGHT, DIRECTIONAL ARROWS AS INDICATED. EXIT SIGN PLACEMENT SHALL BE NO MORE THAN 100 FEET.

SEE SHEET A0.5 FOR FULL CODE SUMMARY

OCCUPANT LOAD CALCULATIONS PER TABLE 1004.1.1

SECOND FLOOR					
Room Number	Room	SqFt	Floor Area Per Occupant	Occupant Load	Occupant Load
BLDG "A"	Residential Area	6,824	200	34.12	35
251	PC Room	140	7	20.00	20
252	Reading	695	50	13.90	14
253	TV Room	455	15	30.33	31
255	Multipurpose	564	15	37.60	38
BLDG "B"	All Spaces	14,249	200	71.25	72
BLDG "C"	All Spaces	6,815	200	34.08	35
				Building 'A' Total =	138
				Building 'B' Total =	72
				Building 'C' Total =	35
				Grand Total =	245



EXITING TABLE - (BUILDING 'A')		
- EGRESS OCCUPANT LOADS PER TABLE 1004.1.1 -		
2ND FLOOR LOAD -		
TOTAL BUILDING 'A' 2ND FLOOR OCCUPANT LOAD	EGRESS WIDTH REQ. PER TABLE 1005.1	# OF EXITS REQ. PER TABLE 1019.1
138	138 x .3 = 41.4"	2
EXIT		
EGRESS WIDTH	MAX. OCC. LOAD CAPACITY	
STAIR EXIT DOOR 250	36"	120
HORIZONTAL EXIT DOOR 262	42"	140
TOTALS PROVIDED:	78"	260
EXITING TABLE - (BUILDING 'B')		
- EGRESS OCCUPANT LOADS PER TABLE 1004.1.1 -		
2ND FLOOR LOAD -		
TOTAL BUILDING 'B' 2ND FLOOR OCCUPANT LOAD	EGRESS WIDTH REQ. PER TABLE 1005.1	# OF EXITS REQ. PER TABLE 1019.1
72	72 x .3 = 21.6"	2
EXIT		
EGRESS WIDTH	MAX. OCC. LOAD CAPACITY	
HORIZONTAL EXIT DOOR 256	42"	140
STAIR EXIT DOOR 258	36"	120
STAIR EXIT DOOR 259	36"	120
TOTALS PROVIDED:	114"	380
EXITING TABLE - (BUILDING 'C')		
- EGRESS OCCUPANT LOADS PER TABLE 1004.1.1 -		
2ND FLOOR LOAD -		
TOTAL BUILDING 'C' 2ND FLOOR OCCUPANT LOAD	EGRESS WIDTH REQ. PER TABLE 1005.1	# OF EXITS REQ. PER TABLE 1019.1
35	35 x .3 = 10.5"	2
EXIT		
EGRESS WIDTH	MAX. OCC. LOAD CAPACITY	
HORIZONTAL EXIT DOOR 262	42"	140
STAIR EXIT DOOR 264	36"	120
TOTALS PROVIDED:	78"	260