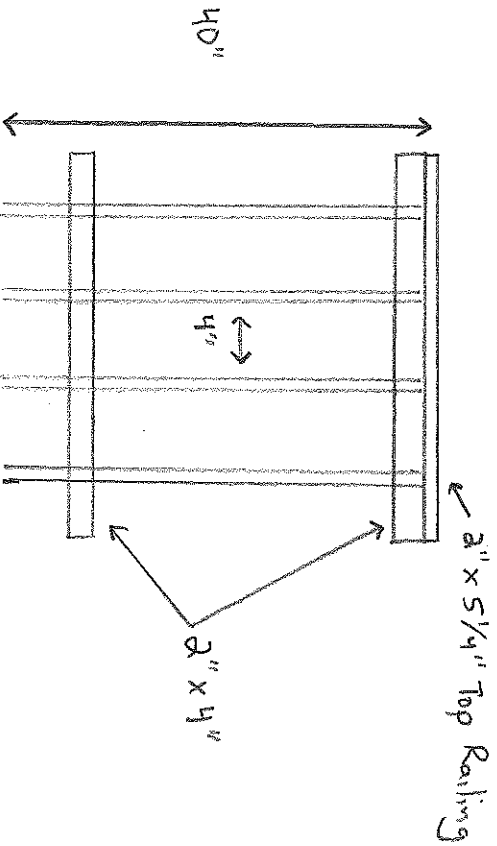
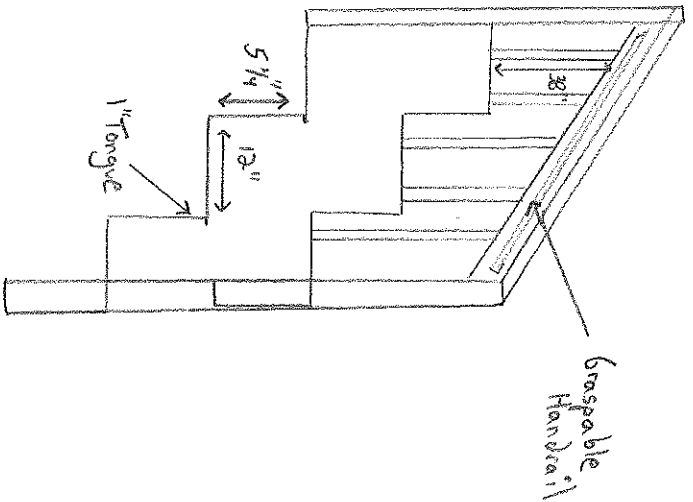
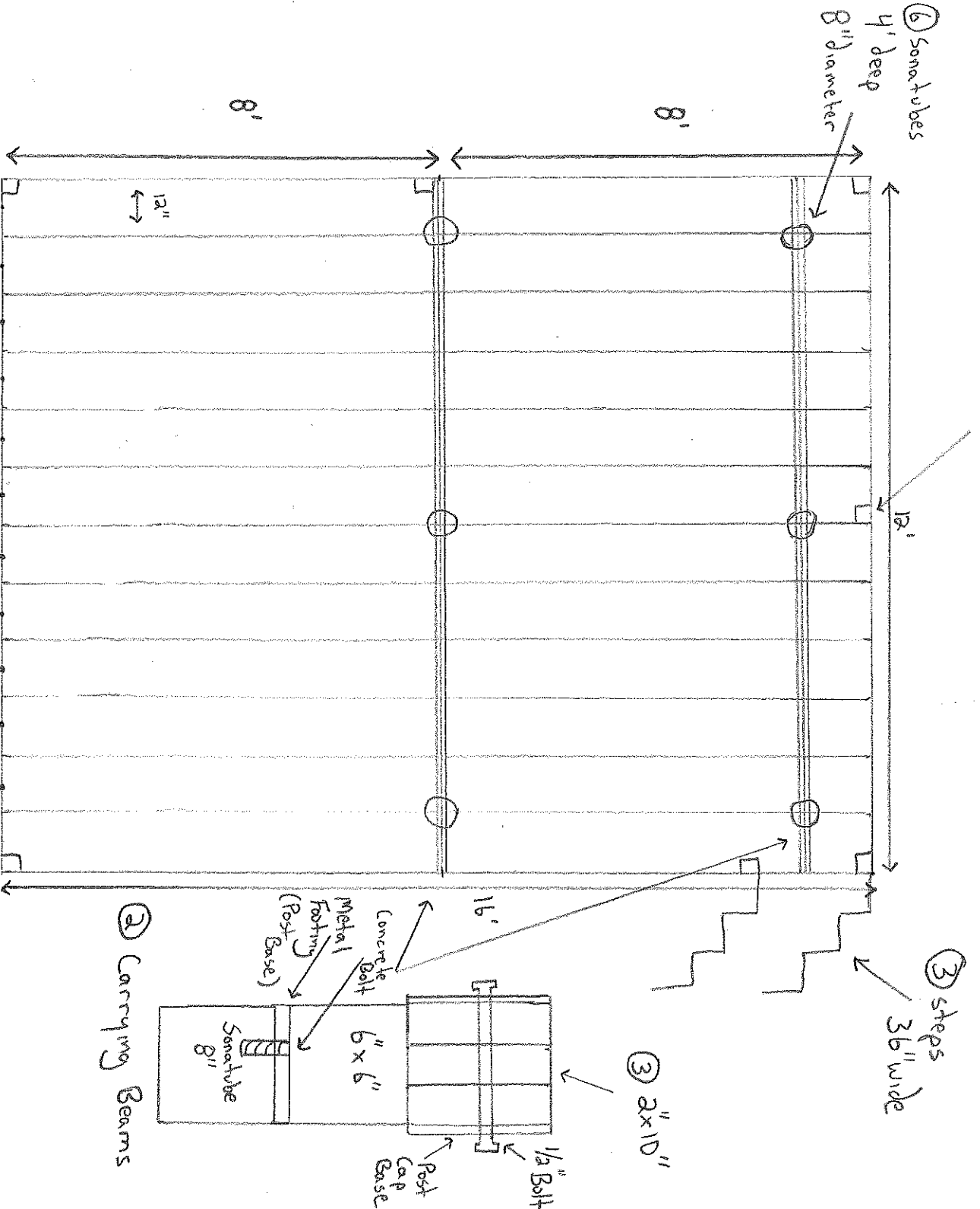


60 Huntington Ave.



Stairs

⑧ 4" x 4" x 40" High posts



⑥ Sonotubes

4' deep
8" diameter

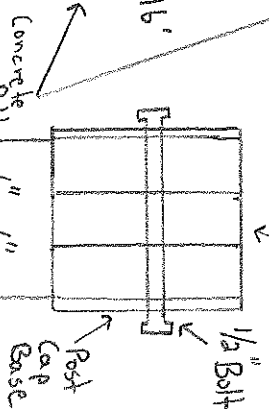
8'

8'

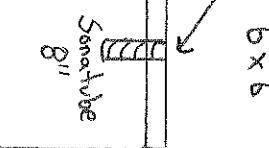
② Carrying Beams

③ 2" x 10"

③ steps
36" wide



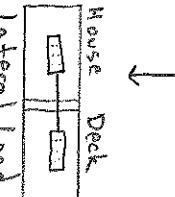
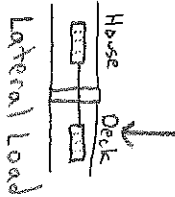
Concrete Bolt
Metal Footing
(Post Base)



6" x 6"
Sonotube

Existing House

⑪ log bolts
12" apart



⑬ Metal Joist Hangers

James Lussier 11/12/15