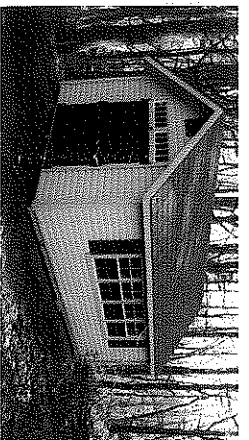


### Economy A-Frame

Size	Pine	T1-11
6 x 8	1,250	1,315
6 x 10	1,410	1,480
6 x 12	1,595	1,675
8 x 8	1,490	1,560
8 x 10	1,690	1,775
8 x 12	1,895	1,990
8 x 14	2,125	2,230
8 x 16	2,355	2,465
10 x 12	2,250	2,380
10 x 14	2,520	2,655
10 x 16	2,705	2,840
12 x 14	2,935	3,080
12 x 16	3,135	3,295

#### ECONOMY SPECIFICATIONS

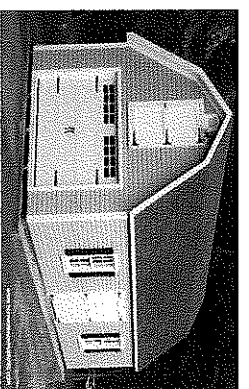
all framing 2x4" on center  
 Flooring 5/8" OSB  
 Roof sheathing 7/16" osp  
 Rolled roofing "Black"  
 4" t-hinges on pine doors  
 No windows  
 No vents  
 standard overhangs  
 Door must be in Gable end  
 Pine Trim



### Extended Gable

Size	Pine	T1-11 SmartSide	Vinyl
8 x 12	2,800	2,931	3,481
8 x 14	3,199	3,266	3,825
8 x 16	3,431	3,595	4,113
8 x 20	4,238	4,441	4,981
10 x 10	3,040	3,250	3,669
10 x 12	3,350	3,506	4,094
10 x 14	3,700	3,874	4,519
10 x 16	3,981	4,169	4,838
10 x 20	5,106	5,350	5,850
12 x 12	4,074	4,265	4,776
12 x 14	4,356	4,560	5,138
12 x 16	4,638	4,855	5,550
12 x 20	5,794	6,070	6,719
12 x 24	7,194	7,540	8,225
14 x 16	6,056	6,343	6,869
14 x 20	7,431	7,786	8,344
14 x 24	8,850	9,276	9,969

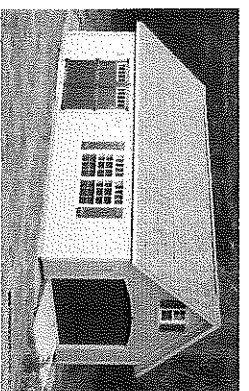
8/12 roof pitch  
 6" overhangs on rakes and eaves  
 trimmed windows and vents  
 2 windows 18"x27"  
 6" wall studs  
 4" fascia and gable trim  
 Shown with transoms and addl windows



### 2 Story Extended Gambrel

Size	Pine SmartSide	Vinyl
12 x 16	6,534	8,070
12 x 20	8,208	9,819
12 x 24	9,287	11,021
12 x 28	11,550	13,420
14 x 16	8,760	10,320
14 x 20	9,566	11,290
14 x 24	11,779	13,860
14 x 28	13,100	14,220
16 x 20	11,540	13,040
16 x 24	13,560	15,600
16 x 28	15,680	17,900

2x4x7'4" wall studs  
 extended Gambrel roof  
 standard non insulated garage door  
 6" overhangs on rakes and eaves  
 4" fascia and gable trim  
 2 windows 24"x36"  
 2nd floor, 2"x6" joists with L stairs  
 optional gable end door, shutters,  
 carriage door



### 2 Story Extended Gable

Size	Pine SmartSide	Vinyl
12 x 16	5,925	7,306
12 x 20	7,390	9,013
12 x 24	8,305	10,200
12 x 28	10,570	11,780
14 x 16	7,778	9,284
14 x 20	8,640	10,210
14 x 24	10,570	12,340
14 x 28	11,900	13,880
16 x 20	9,990	11,900
16 x 24	12,480	14,520
16 x 28	14,590	16,700

2x4x7'4" wall studs  
 6" overhangs on rakes and eaves  
 standard non insulated garage door  
 4" fascia and gable trim  
 12/12 roof pitch gable roof  
 2 windows 24"x36"  
 2nd floor, 2"x6" joists with L stairs  
 Shown with optional transoms, arch door,  
 gable window, shutters, ramp

### Structurally the best shed available, Guaranteed!

Sheds are built on Pressure treated 4"x4" sldks, 6' and 8' wide shed have 2"x4" Pressure Treated floor joists 16" On center, 10' and wider sheds have 2"x6" Pressure Treated floor joists 16" on center, 3/4" LP Prostruct tongue and groove floor sheathing with SmartFinish, All framing is 16" on center house construction, 7/16" LP Prostruct Roof sheathing with SilverTech Technology, Aluminum Drip Edge on rakes and eaves, 35 year asphalt architectural roof shingles, Standard venting (8'x 8' aluminum gable vents), Sheds 8'x10' and smaller include 1 window, 8'x12' and larger include 2 windows, Sheds include 1 door (30" single, 4' or 5' double), Metal wall bracing standard in Pine Sheds.

### Customization of all storage buildings is available.

Supplied with rough drawings or pictures, specifications on materials and pertinent dimensions, Shed Happens will return an estimated usually within 48 hours. Most shed companies will not do custom work and (based on our purchasing power and manufacturing facility) reputable contractors can not match our prices.