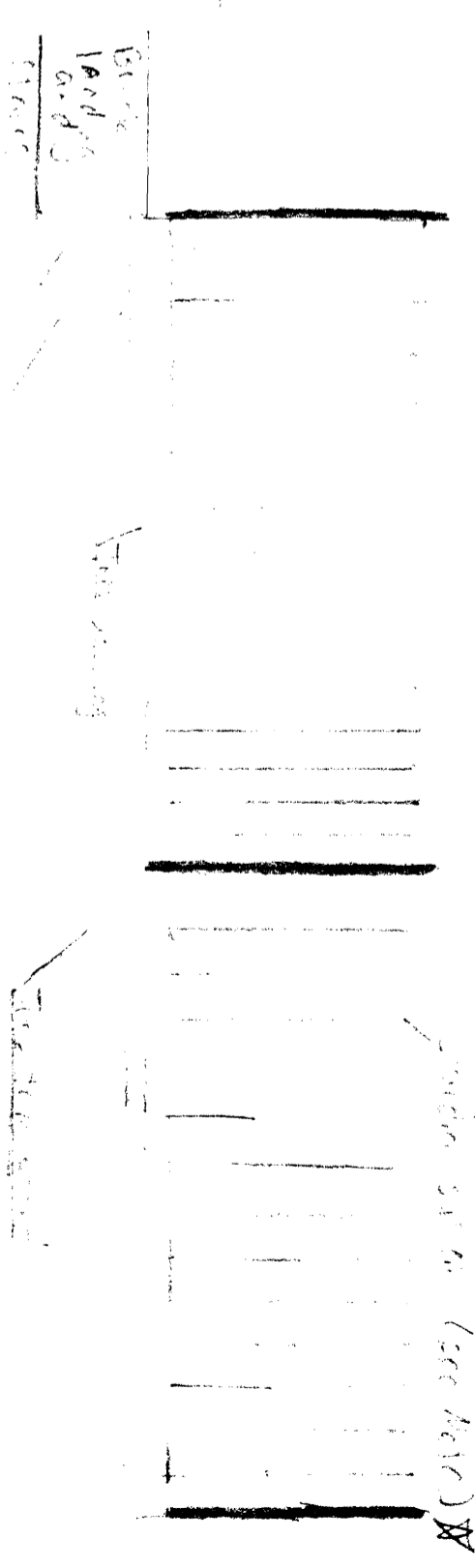


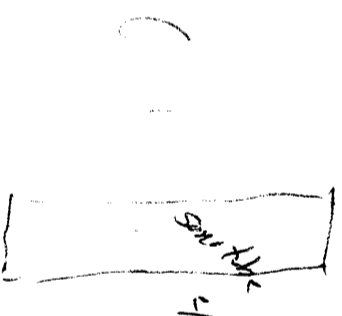
← 2x6 Tongue & Groove on End
End (under side)

← 2x6 Joist (see page 4)

6'-6"

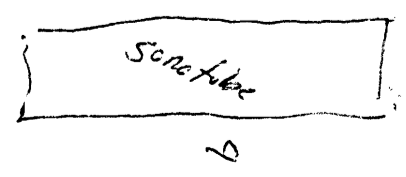


Notes



2x4's for iron for both

Form string



Handed on the drawing

Handed on the drawing

Notes

Brick landing side is 16" over to overhang No. 4 post PT 16"

Thess side of wall is distance with 2x6 log bolts on form string every 16"

All work on top of wall. All post on top of wall

Aluminum flashing against house under eave side

754-2510

H. J. ...