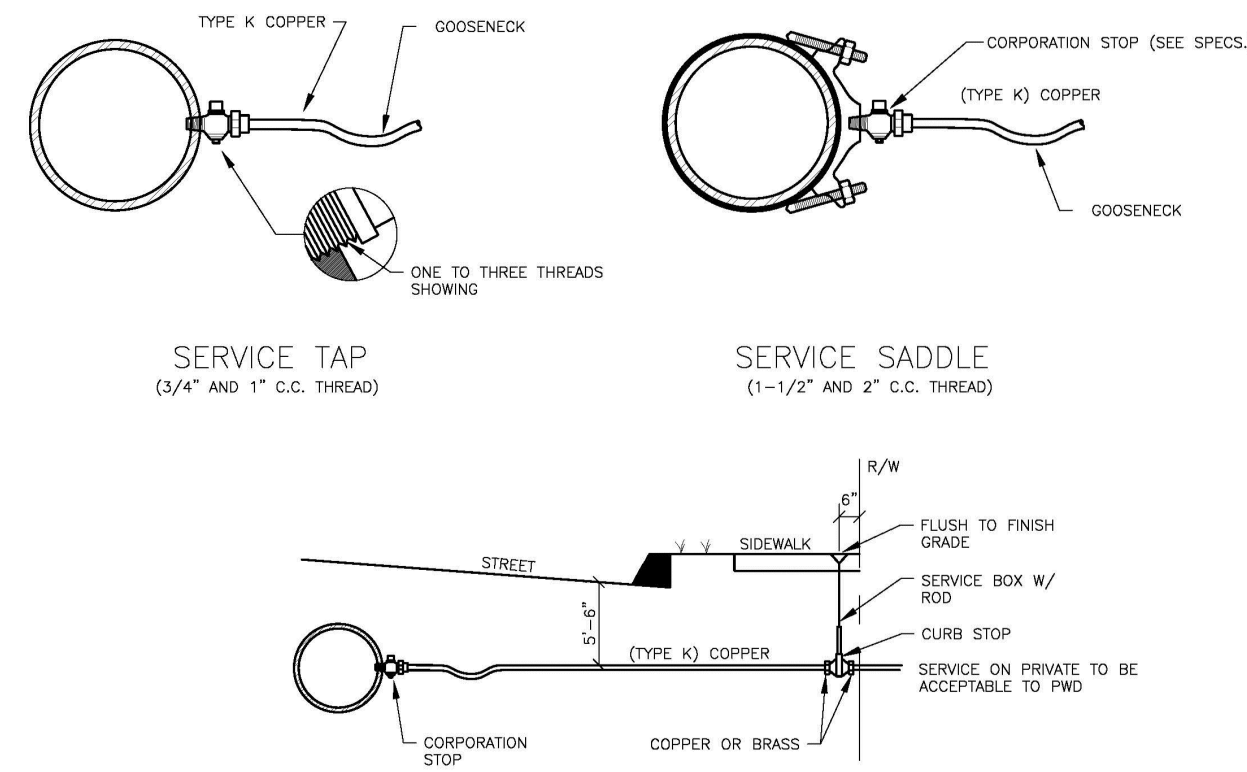
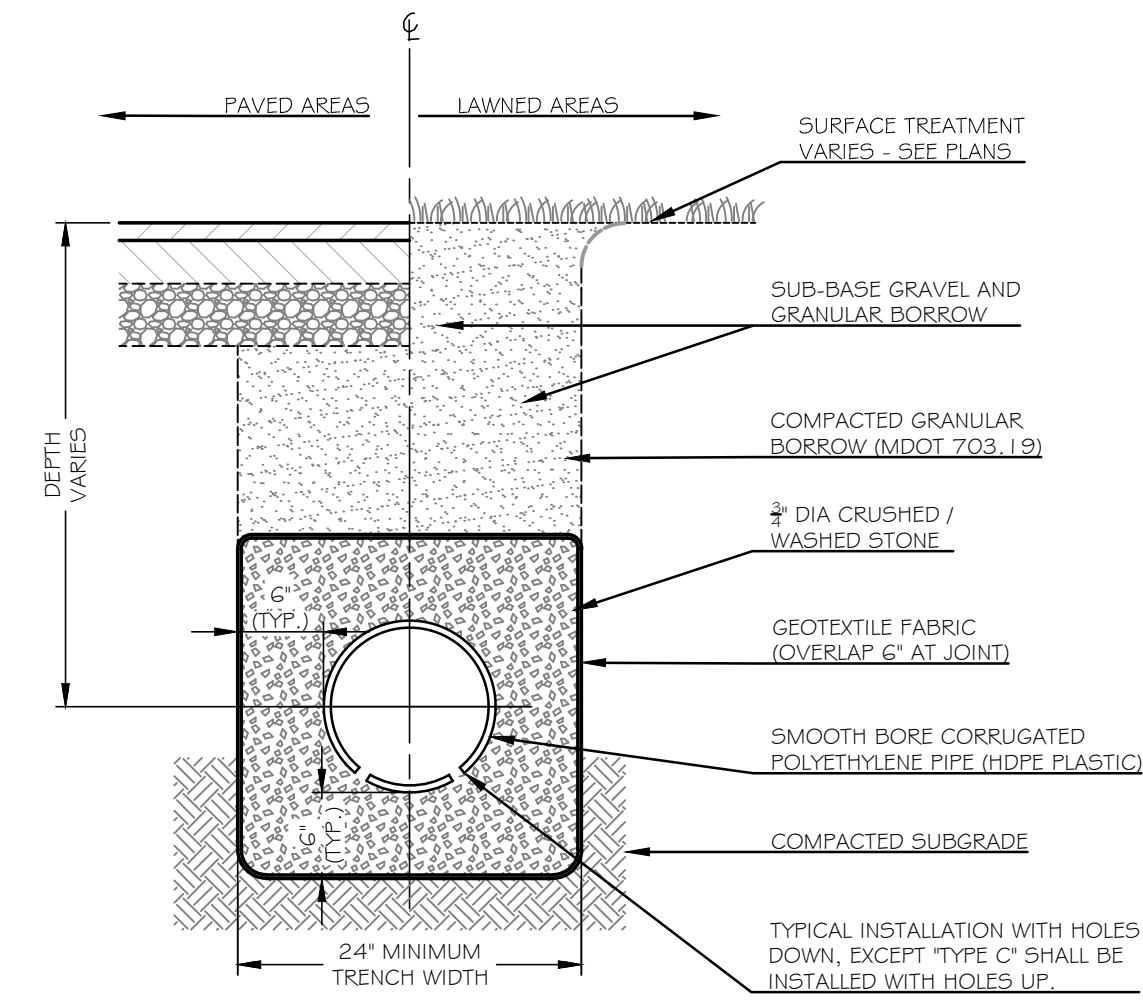


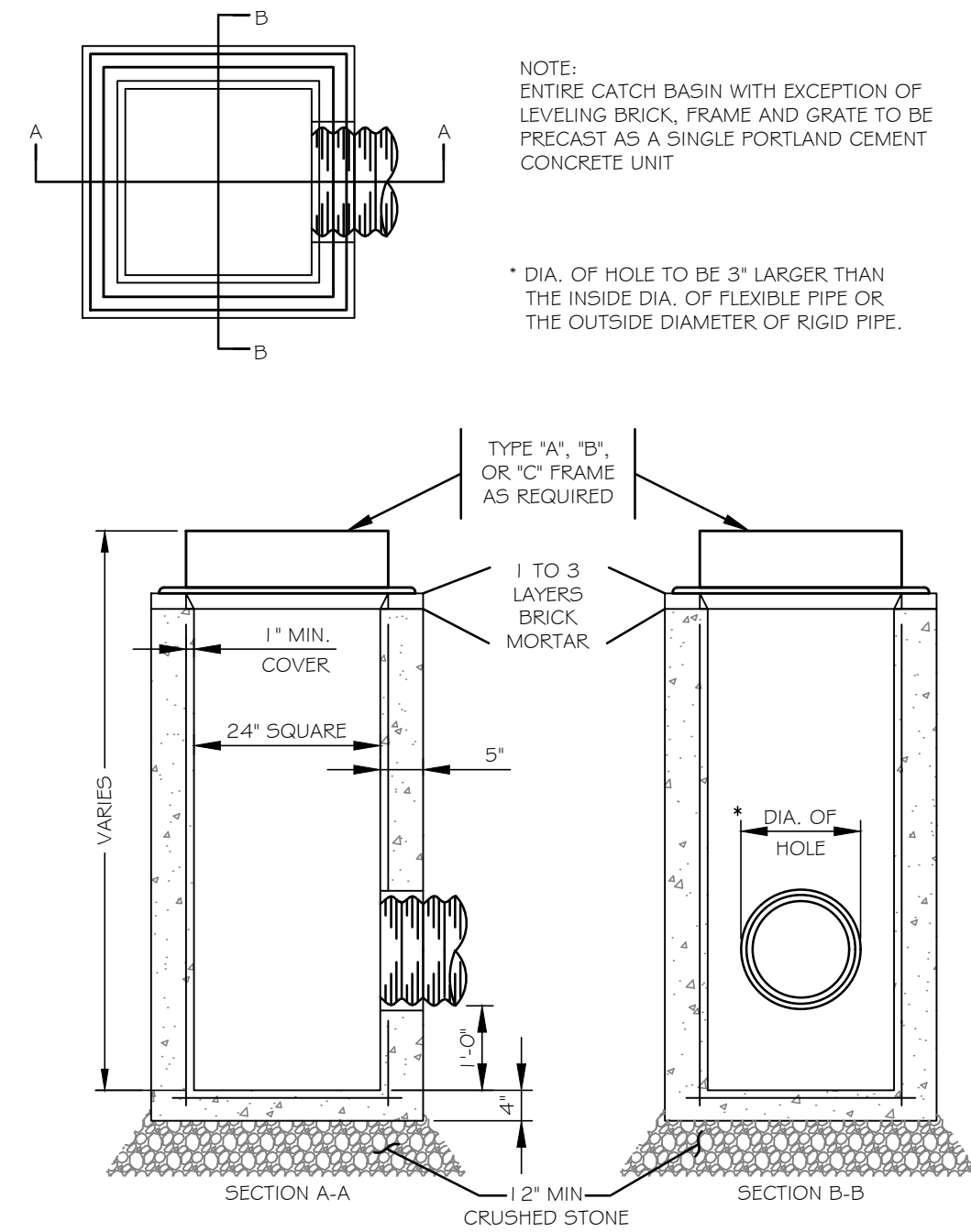
1 VALVE BOX & COVER DETAIL
C3.2 NOT TO SCALE



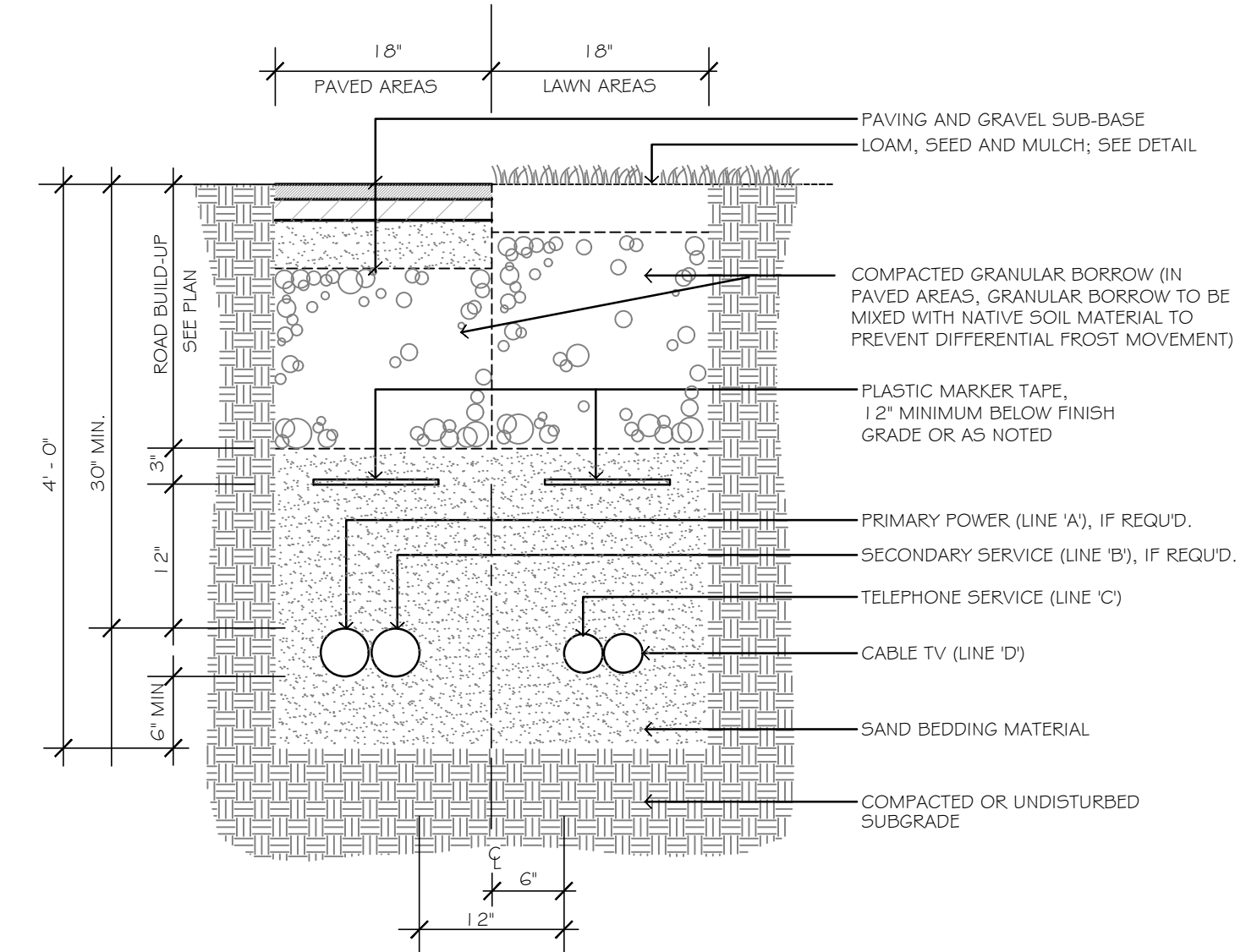
2 TYPICAL SERVICE CONNECTION
C3.2 NOT TO SCALE



3 UNDERDRAIN TRENCH DETAIL
C3.2 NOT TO SCALE



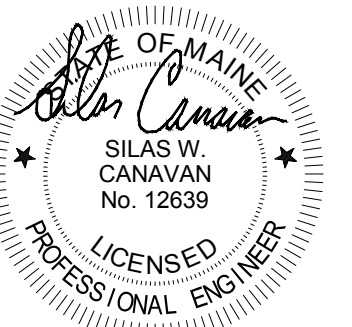
4 TYPE 'F' CATCH BASIN
C3.2 NOT TO SCALE



SERVICE	CONDUIT SIZE*	CONDUIT TYPE	UTILITY
'A'	4"	SCHEDULE 40 P.V.C. ELECTRICAL GRADE	PRIMARY POWER
'B'	4"	SCHEDULE 40 P.V.C. ELECTRICAL GRADE	SECONDARY POWER
'C'	3"	SCHEDULE 40 P.V.C. ELECTRICAL GRADE	TELEPHONE
'D'	3"	SCHEDULE 40 P.V.C. ELECTRICAL GRADE	CATV

- NOTES:
- ALL WORK SHALL COMPLY WITH THE RESPECTIVE UTILITY COMPANY STANDARDS.
 - SEE UTILITIES PLANS FOR CONDUIT LOCATIONS.
 - CONTRACTOR TO PROVIDE 1/4" POLYPROPYLENE FULL ROPES IN ALL CONDUITS.
 - CONTRACTOR SHALL VERIFY CONDUIT SIZE WITH APPLICABLE UTILITY COMPANIES.

5 UNDERGROUND UTILITY TRENCH SECTION
C3.2 NOT TO SCALE



3/9/18

Florida Avenue Extension
Portland, ME 04103

Robert & Christine Rodney & Kelsey Grover
271 Bath Road
Wilkesbarre, Maine

ISSUED FOR PERMITTING - NOT FOR CONSTRUCTION

Rev.	Date	Description	Drawn	Check

Sheet Title:
Site Details
(Sheet 3 of 3)

Job No.:	386	Sheet No.:	C3.2
Date:	Mar. 09, 2018	Drawn:	CAR
Scale:	As Noted	Checked:	SWC