

Florida Avenue Extension

Portland, Maine 04103

Prepared For:
Robert & Christine Rodney & Kelsey Grover
 Preliminary Submission - Mar. 09, 2018

Design Consultants:

CIVIL ENGINEER/PROJECT MANAGEMENT
 WALSH ENGINEERING ASSOCIATES, INC.
 ONE KAREN DRIVE, SUITE 2A
 WESTBROOK, MAINE 04092
 207-553-9898

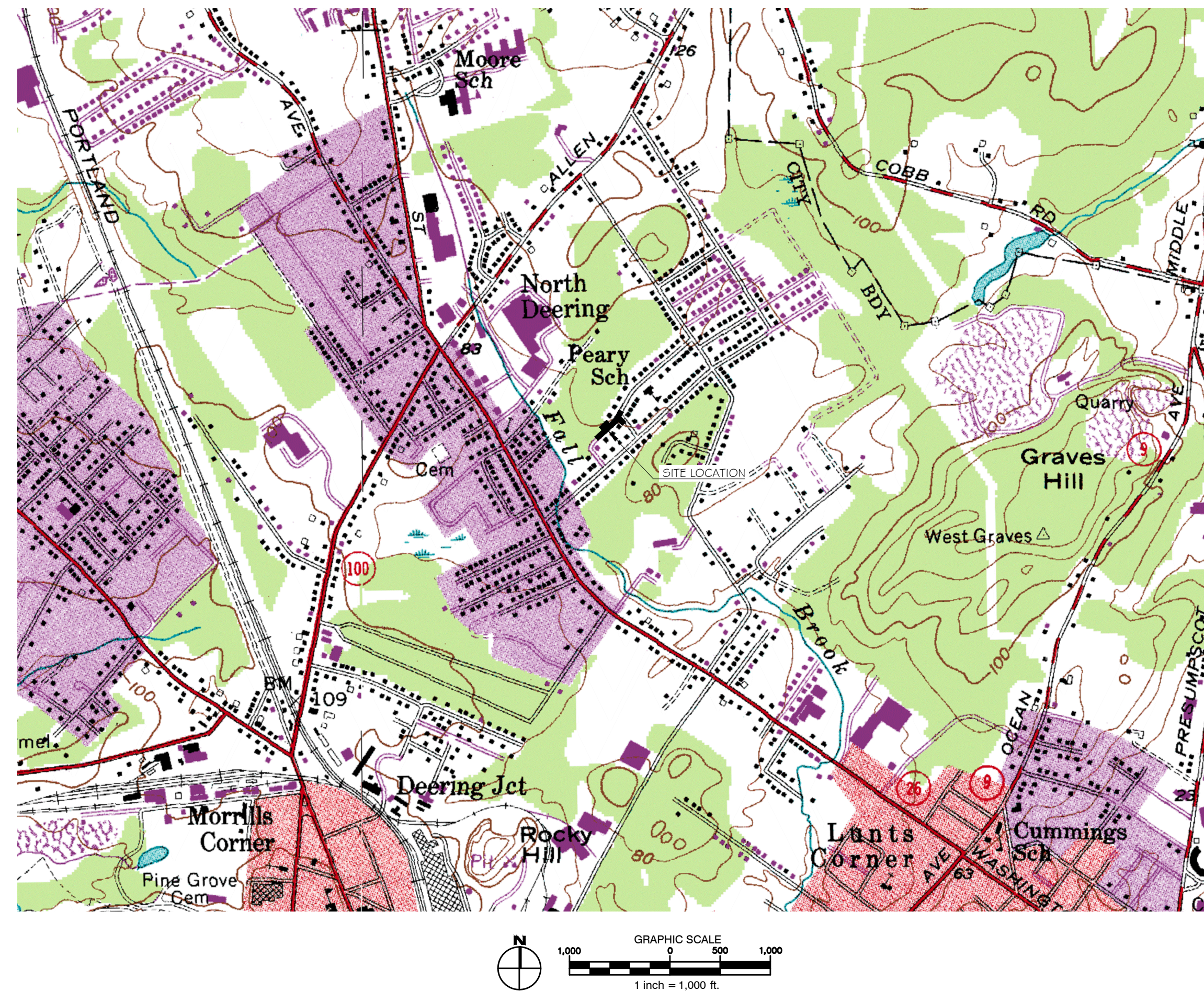
LAND SURVEYOR
 NADEAU LAND SURVEYS
 918 BRIGHTON AVE
 PORTLAND, MAINE 04102
 207-878-7870



One Karen Dr., Suite 2A | Westbrook, Maine 04092
 ph: 207.553.9898 | www.walsh-eng.com

List of Drawings:

SHEET NO.	SHEET TITLE
C0.0	COVER SHEET
C1.0	EXISTING CONDITIONS & REMOVALS PLAN
C2.0	FLORIDA AVENUE PLAN & PROFILE STA 0+00 TO 3+50
C2.1	CONSTRUCTION MANAGEMENT PLAN
C3.0	SITE DETAILS (SHEET 1 OF 3)
C3.1	SITE DETAILS (SHEET 2 OF 3)
C3.2	SITE DETAILS (SHEET 3 OF 3)



Permits:

TYPE	JURISDICTION	STATUS
LEVEL I SITE ALTERATION APPLICATION	CITY OF PORTLAND	PRELIMINARY SUBMITTED MAR. 09, 2018

ISSUED FOR PERMITTING - NOT FOR CONSTRUCTION

C0.0