

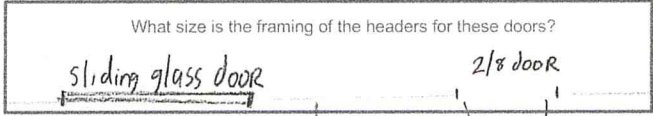
Eric 15 Gertrude St.  
951-1498 Portland

Floor system

- 3/4" Advantac subfloor
- 2x10 PT
- 2x10 PT Floor joist
- Between Joist 1" Foam Board + R11 Insulation
- 6 mL. Plastic
- 1/2" PT Plywood Bottom

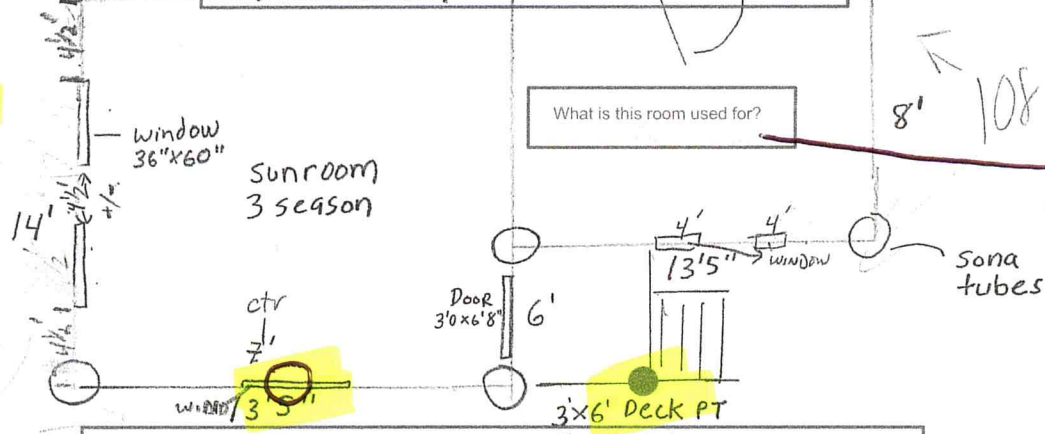
What is the carrying beam size and is it supported by the posts? Are the joists butting to the beam with joist hangers, or are the joist over the top of the beam? What about at the wall ledger

House



Wall Ledger - 2x12x14'  
2x10x14 PT Joist Butting  
Beam 3-2x12x14 PT'

All ready there.  
3-2x10x8 KD



Depending on your beam sizes, the sona tubes may be too far apart, please revise the plans based on the loading capacity. Also, a sona tube is required at the outside deck corner.

will install another sona tube  
Roof system

