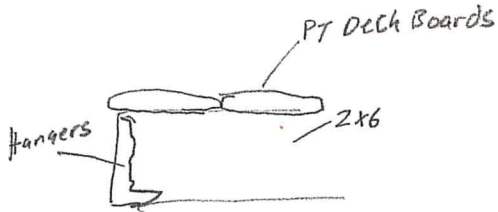
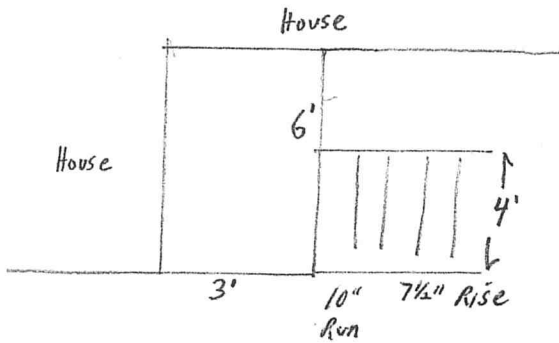


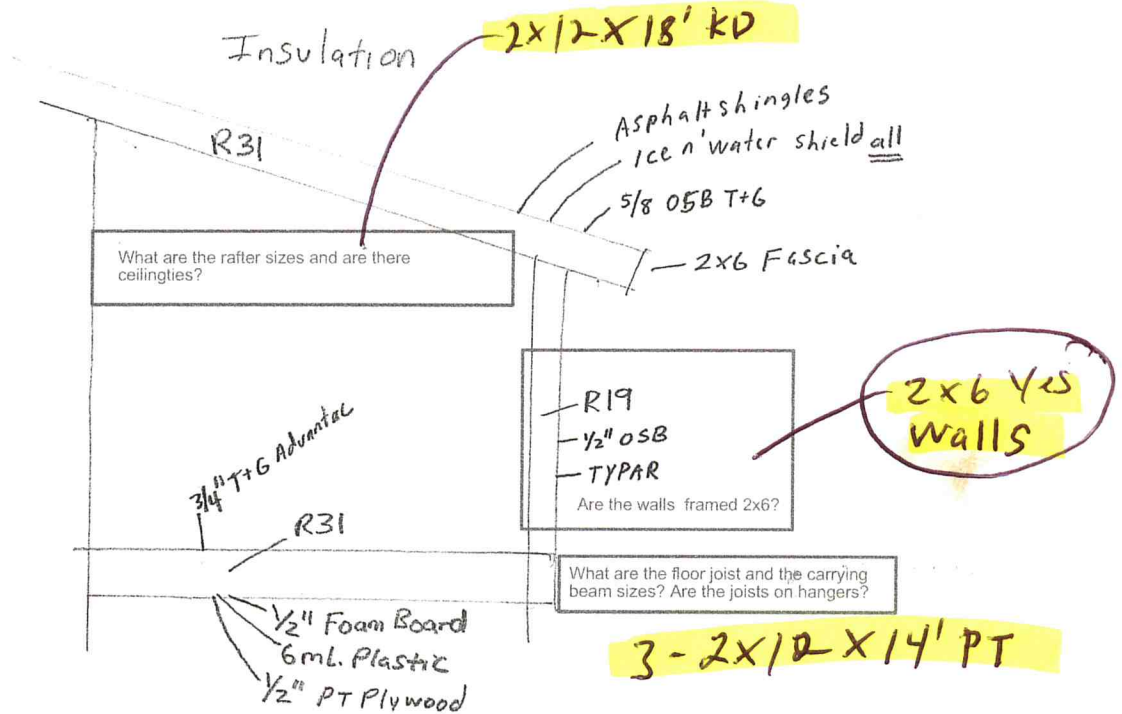
Portland, ME 04101
 jmb@portlandmaine.gov
 Direct: (207) 874-8715
 Office: (207) 874-8703

Permit status can be viewed at: <http://www.portlandmaine.gov/792/Permit-Status>

DECK



* All Framing screw to House with GRKs 4"



What are the rafter sizes and are there ceilingties?

R19
 1/2" OSB
 TYPAR
 Are the walls framed 2x6?

What are the floor joist and the carrying beam sizes? Are the joists on hangers?

3/4" T+G Advantac
 R31

1/2" Foam Board
 6ml. Plastic
 1/2" PT Plywood

3-2x12x14' PT