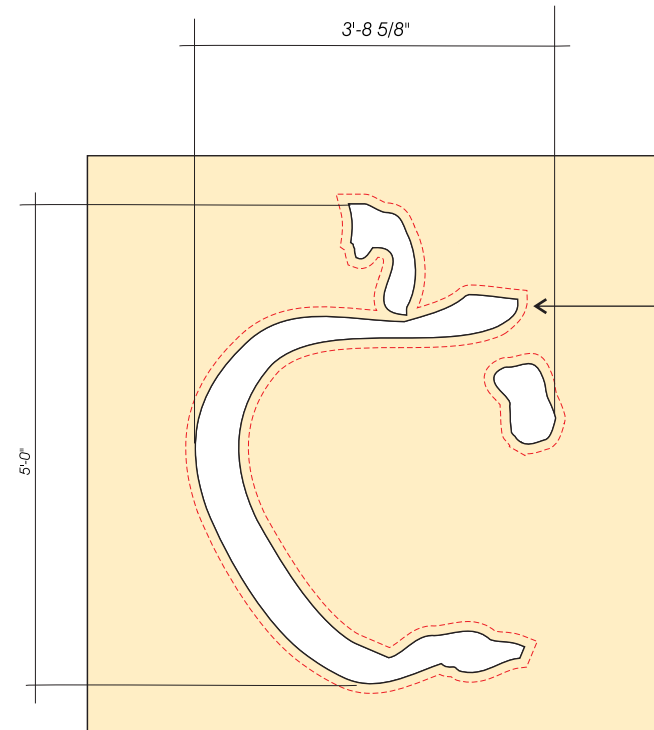


BLACK

PMS # 187 C

RED TRESPA BACK UP PANEL (BEST MATCH TO PMS #187 C)
SURFACE: APPLY 3M HIGHLIGHTER FILM



6'-0" X 6'-0" TRESPA FACE WITH JIGGED OUT LOGO SYMBOL

RED DASHED LINE INDICATED RED LED PATH ON SECOND SURFACE OF FACE

LOGO SYMBOL OVERALL DIMENSIONS 5'-0" X 3'-8 5/8"
5 X 3.66 = 18.3 SQ.FT.

LOGO HAS BEEN MODIFIED



PLEASE NOTE:

THIS IS A PROGRESS PRINT - FIELD MEASUREMENTS MAY OR MAY NOT NEED TO BE VERIFIED.

THIS DESIGN IS THE EXCLUSIVE PROPERTY OF BAILEY SIGN INCORPORATED AND ALL RIGHTS TO ITS USE OR REPRODUCTION ARE RESERVED.

THE ACCURACY OF THIS COLOR RENDERING IS LIMITED BY MEDIA AND OUTPUT DEVICES AND IS INTENDED FOR REPRESENTATIONAL USE ONLY. ACTUAL MANUFACTURING GRAPHIC COLORS ALSO VARY DEPENDING ON PROCESSES & MATERIALS USED. 100% COLOR MATCHES OF SUBMITTED SPECIFICATIONS CAN NOT BE GUARANTEED.

IF AN ELECTRIC SIGN, THEN INSTALLATION MUST BE ACCOMPLISHED IN TOTAL COMPLIANCE WITH ARTICLE 600 OF THE NATIONAL ELECTRIC CODE, THE REQUIREMENTS OF UNDERWRITERS LABORATORY, CANADIAN STANDARDS ASSOCIATION AND/OR ANY APPLICABLE LOCAL CODES. THIS INCLUDES PROPER GROUNDING AND BONDING OF THE SIGN


ALL ELECTRICAL SIGNS REQUIRE ROUTINE MAINTENANCE.

CLIENT

ACCEPTANCE SIGNATURE _____ DATE _____

BAILEY SIGN SALES REPRESENTATIVE

APPROVED _____ DATE _____



www.baileysign.com
9 Thomas Drive
Col. Westbrook Executive Park
Westbrook, ME 04092
207-774-2843 / 1-800-539-SIGN
Fax: 774-1193
E-Mail: sales@baileysign.com

© COPYRIGHT 2013

CUSTOMER / SIGN LOCATION
CUMBERLAND COUNTRY FCU

1345 WASHINGTON AVENUE
PORTLAND, MAINE

SALESPERSON: DE DRAWN BY: LWM

RS.# _____ W.O.# D-159

SCALE 1/2" = 1' 1/8" = 1' DATE 10/21/13

REVISION # | DATE | NOTES | INITIALS

R1 1/14/14 REVISE COPY

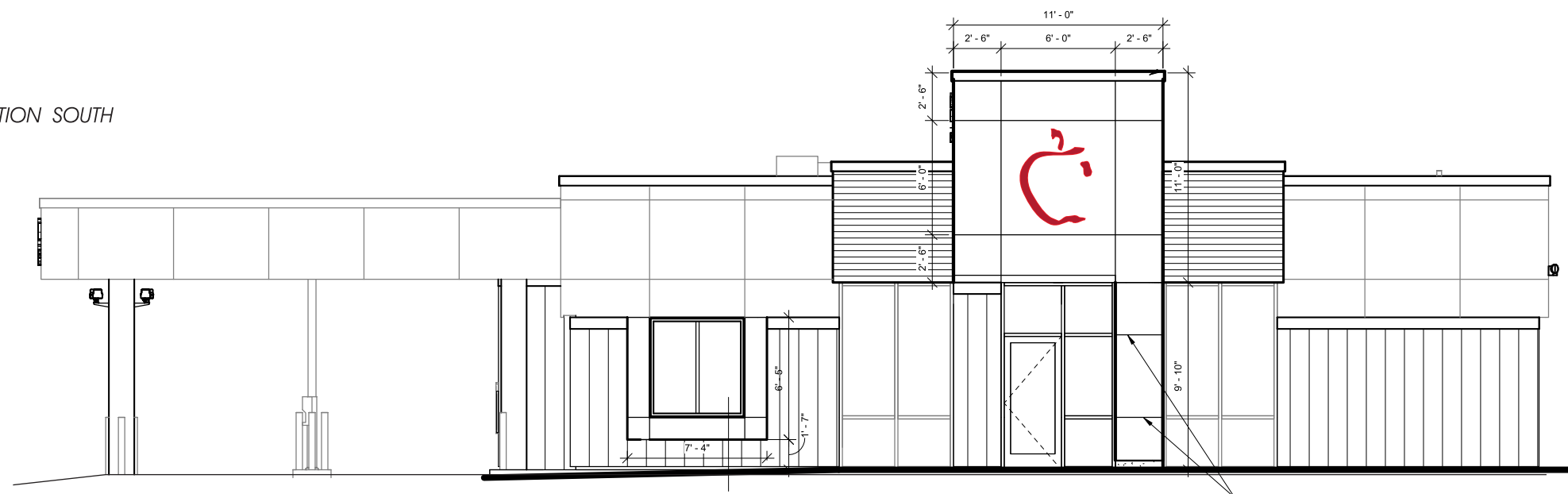
DRAWING #

07083 B R1

SHEET _____ OF _____

EXTERIOR ELEVATION WEST / TOWER SIGN
JIGGED OUT LOGO ILLUMINATED W/ RED LED

EXTERIOR ELEVATION SOUTH



PERMIT DRAWING