



OVERALL DIMENSIONS 3'-0" X 17'-1 1/2"
3 X 17.125 = 51.375 SQ. FT.

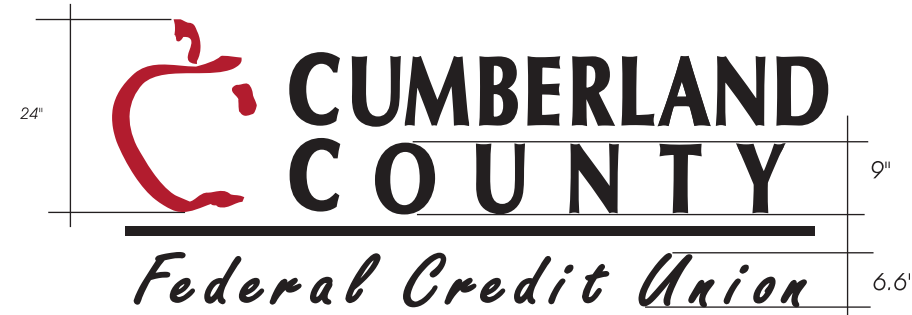
LOGO HAS BEEN MODIFIED
TO ACCOMMODATE INTERNAL ILLUMINATION

 BLACK

 PMS # 187 C

EXTERIOR ELEVATION WEST / DRIVE THRU CANOPY END

HALO LIT FABRICATED METAL LOGO & LETTERS: ILLUMINATED W/ WHITE LED TYP. STUD MOUNTED OFF 1 1/2"



OVERALL DIMENSIONS 3'-0" X 7'-5.34"
3 X 7.45 = 22.34 SQ. FT.

LOGO HAS BEEN MODIFIED TO MATCH CANOPY SET

EXTERIOR ELEVATION WEST / TOWER SIGN

CUT OUT 1/2" KOMACEL LOGO & LETTERS / STUD MOUNTED 1/2" STAND OFF

PLEASE NOTE:

THIS IS A PROGRESS PRINT - FIELD MEASUREMENTS MAY OR MAY NOT NEED TO BE VERIFIED.

THIS DESIGN IS THE EXCLUSIVE PROPERTY OF BAILEY SIGN INCORPORATED AND ALL RIGHTS TO ITS USE OR REPRODUCTION ARE RESERVED.

THE ACCURACY OF THIS COLOR RENDERING IS LIMITED BY MEDIA AND OUTPUT DEVICES AND IS INTENDED FOR REPRESENTATIONAL USE ONLY. ACTUAL MANUFACTURING GRAPHIC COLORS ALSO VARY DEPENDING ON PROCESSES & MATERIALS USED. 100% COLOR MATCHES OF SUBMITTED SPECIFICATIONS CAN NOT BE GUARANTEED.

IF AN ELECTRIC SIGN, THEN INSTALLATION MUST BE ACCOMPLISHED IN TOTAL COMPLIANCE WITH ARTICLE 600 OF THE NATIONAL ELECTRIC CODE, THE REQUIREMENTS OF UNDERWRITERS LABORATORY, CANADIAN STANDARDS ASSOCIATION AND/OR ANY APPLICABLE LOCAL CODES. THIS INCLUDES PROPER GROUNDING AND BONDING OF THE SIGN.

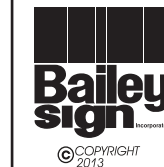
ALL ELECTRICAL SIGNS REQUIRE ROUTINE MAINTENANCE.

CLIENT

ACCEPTANCE SIGNATURE _____ DATE _____

BAILEY SIGN SALES REPRESENTATIVE

APPROVED _____ DATE _____



www.baileysign.com
9 Thomas Drive
Col. Westbrook Executive Park
Westbrook, ME 04092
207-774-2843 / 1-800-539-SIGN
Fax: 774-1193
E-Mail: sales@baileysign.com

CUSTOMER / SIGN LOCATION

CUMBERLAND COUNTRY FCU

1345 WASHINGTON AVENUE
PORTLAND, MAINE

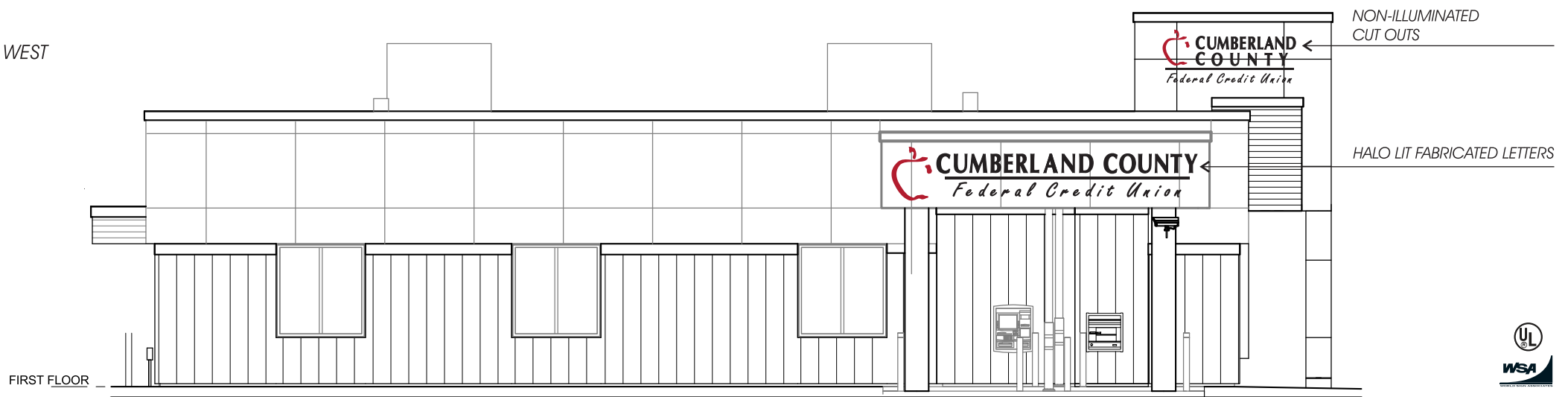
SALESPERSON: DE DRAWN BY: LWM

RS.# _____ W.O.# D-159

SCALE 1/2" = 1' DATE 10/21/13
1/8" = 1'

REVISION # / DATE / NOTES / INITIALS

R1 1/14/14 SMALLER SET NON-LITE



DRAWING #

07083 A R1

SHEET _____ OF _____

PERMIT DRAWING