

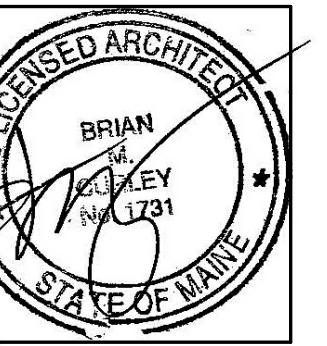


ARCHITECTS

49 DARTMOUTH STREET
PORTLAND, MAINE 04101
207-775-1059
www.pdtarchs.com

COPYRIGHT
PDT Architects
Reuse or reproduction of the
contents of this document is not
permitted without written
permission of PDT Architects.

CUMBERLAND COUNTY FEDERAL CREDIT UNION
1345 Washington Avenue, Portland, ME



JOB NO.
12044

DRWN. Author
CHECK Checker

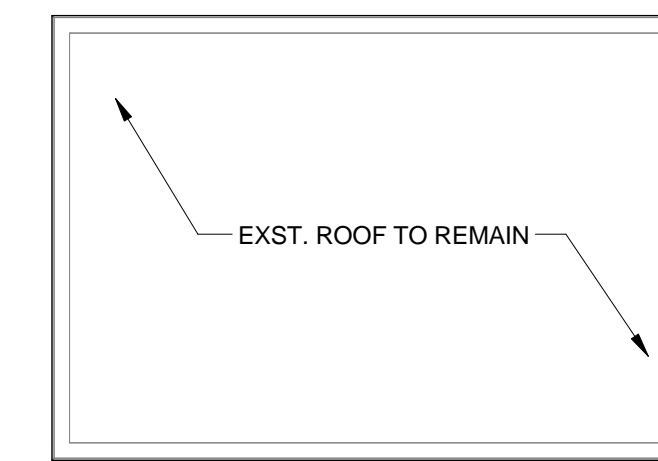
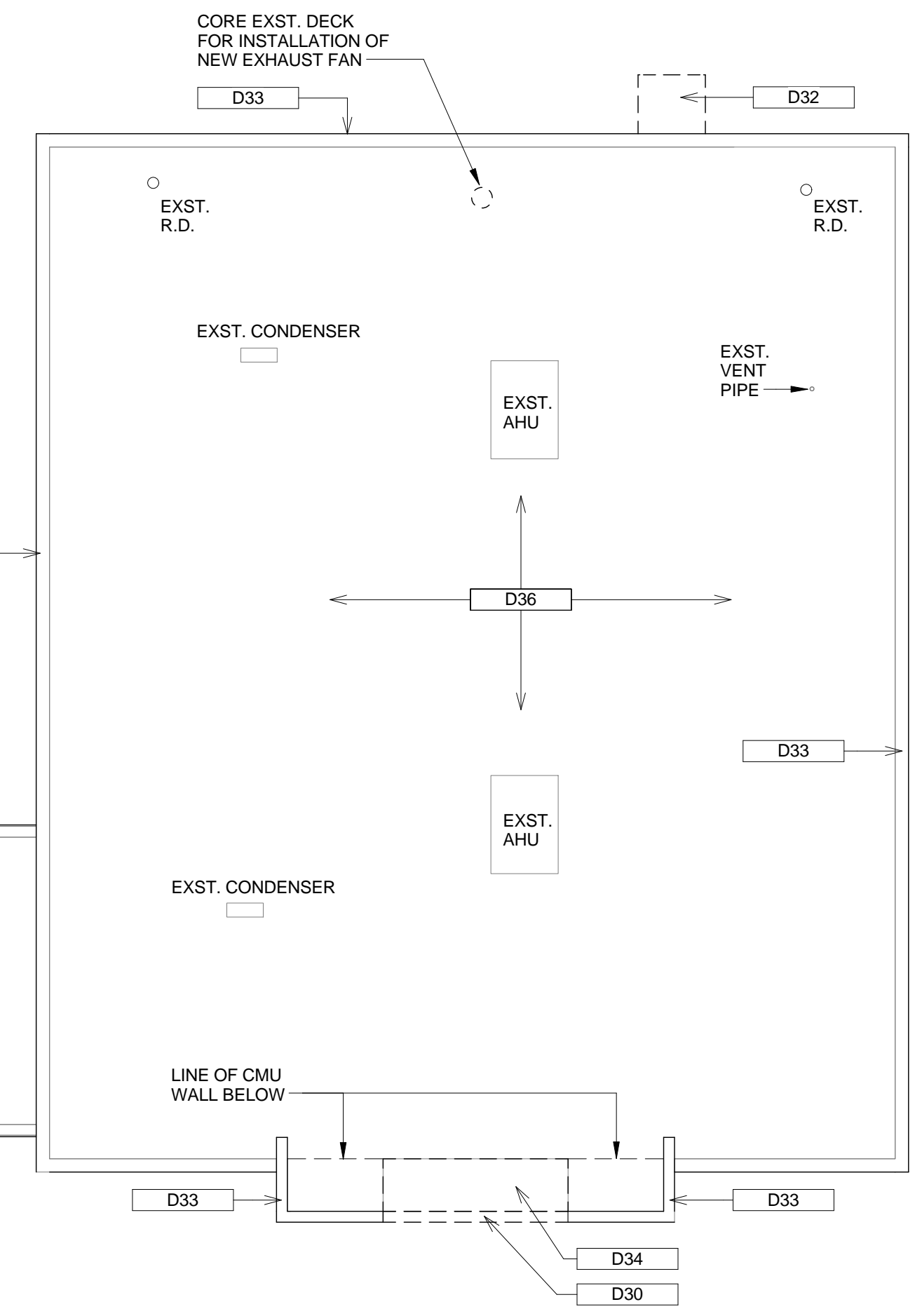
SCALE:
As indicated

ISSUE
30 August, 2013

TITLE
CEILING
DEMOLITION
PLAN

SHEET

AD101

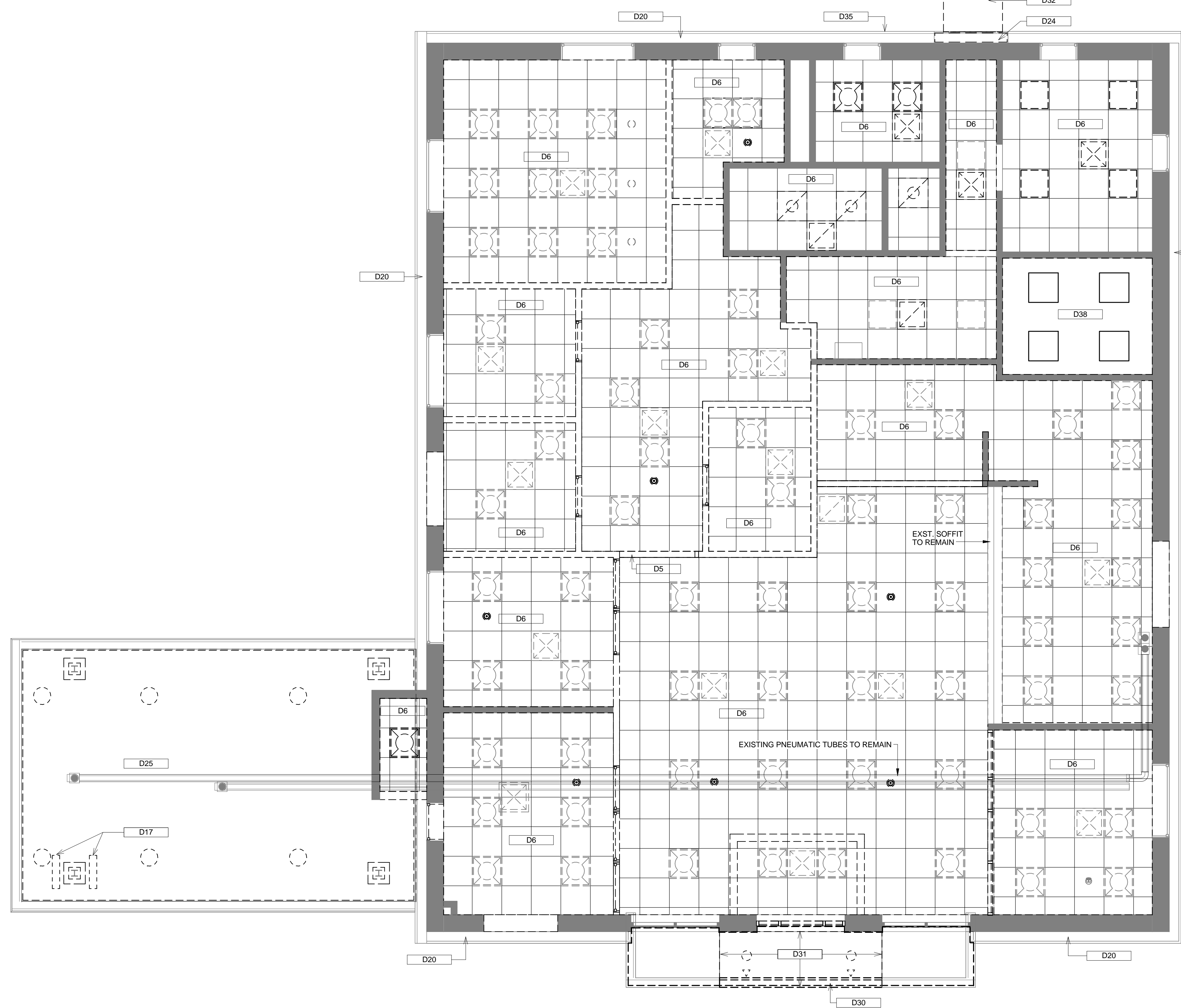
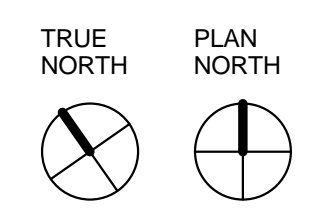


NOTE: EXISTING ROOF EQUIPMENT TO REMAIN. PRESERVE AND PROTECT EQUIPMENT DURING REMOVAL OF EXISTING ROOFING SYSTEM AND INSTALLATION OF NEW SYSTEM.

ROOF DEMO PLAN
1/8" = 1'-0"

KEY VALUE	KEYNOTE TEXT
D2	REMOVE EXISTING PARTITION AND ALL ASSOCIATED ITEMS.
D3	REMOVE EXISTING DOOR, FRAME, HARDWARE & ASSOCIATED BLOCKING.
D4	REMOVE STOREFRONT SYSTEM.
D5	REMOVE EXISTING GWB CEILING OR GWB SOFFIT AND ALL ASSOCIATED ITEMS.
D6	REMOVE EXISTING SUSPENDED ACoustical CEILING AND GRID. SALVAGE FIXTURES FOR REINSTALLATION IN NEW CEILING.
D7	REMOVE PORTION OF FLOOR TILE TO SLAB BELOW.
D8	REMOVE EXISTING FINISH FLOORING TO SLAB BELOW.
D9	REMOVE STOREFRONT SYSTEM. PREPARE OPENING FOR NEW STOREFRONT SYSTEM.
D10	REMOVE EXISTING CASEWORK OR SHELVING AND ALL ASSOCIATED ITEMS.
D11	REMOVE COLUMN SURROUND.
D12	REMOVE EXISTING NIGHT DROP-OFF WINDOW & ASSOCIATED BLOCKING.
D14	WALL TO BE SELECTIVELY DEMOLISHED AS NECESSARY FOR NEW WINDOW OR NEW DOOR AND FRAME.
D15	REMOVE EXISTING PLUMBING FIXTURES AND PIPING.
D15A	REMOVE EXISTING PLUMBING FIXTURE, PIPING TO BE RE-USED OR RE-WORKED AS NECESSARY.
D17	REMOVE SECURITY CAMERAS. SALVAGE FOR RE-INSTALLATION ON NEW COLUMN COVERS. PRESERVE WIRING.
D18	REMOVE EXISTING TOILET PARTITION.
D19	REMOVE EXISTING WINDOW SYSTEM & ASSOCIATED BLOCKING.
D20	EXST. WD. FRAMED & EIFS SOFFIT TO REMAIN. PATCH/REPAIR ANY DAMAGED OR ROTTED WOOD AS NECESSARY.
D24	DEMOLISH PORTION OF EXISTING SOFFIT AND EXTERIOR CMU WALL FINISH AS NECESSARY FOR INSTALLATION OF NEW CANOPY.
D25	REMOVE EXST. CEILING AND LIGHT FIXTURES. PRESERVE AND PROTECT REMOTE TELLER TUBES AND CANOPY STRUCTURE DURING CONSTRUCTION.
D28	REMOVE EXISTING MECHANICAL UNIT & ASSOCIATED WIRING SALVAGE FOR OWNER.
D30	DEMOLISH PORTION OF CANOPY WALL & STRUCTURE. SEE SECTIONS AND DETAILS FOR ADDITIONAL DEMOLITION INFORMATION.
D31	DEMOLISH PORTION OF EXTERIOR SOFFIT FRAMING & LIGHTING. SAVE EXST. WIRING FOR USE WITH NEW LIGHTING.
D32	DEMOLISH CANOPY.
D33	DEMOLISH PARAPET CAP.
D34	DEMOLISH PORTION OF ROOF. SEE SECTIONS AND DETAILS FOR MORE DEMOLITION INFORMATION.
D35	DEMOLISH EXHAUST FAN IN SOFFIT WALL. PATCH HOLE WITH MATERIAL TO MATCH EXISTING ADJACENT.
D36	DEMOLISH EXST. ROOFING SYSTEM. PRESERVE ROOF STRUCTURE AND PREP FOR NEW ROOFING SYSTEM.
D38	EXISTING CEILING AND LIGHT FIXTURES TO REMAIN.
D39	REMOVE EXISTING CO-AXIAL CABLING IN WALL/CEILING.

GRAPHIC LEGEND	
	DASHED LINES INDICATE ITEMS TO BE REMOVED.
	EXISTING CONSTRUCTION TO REMAIN.



FIRST FLOOR DEMO CEILING PLAN
1/4" = 1'-0"