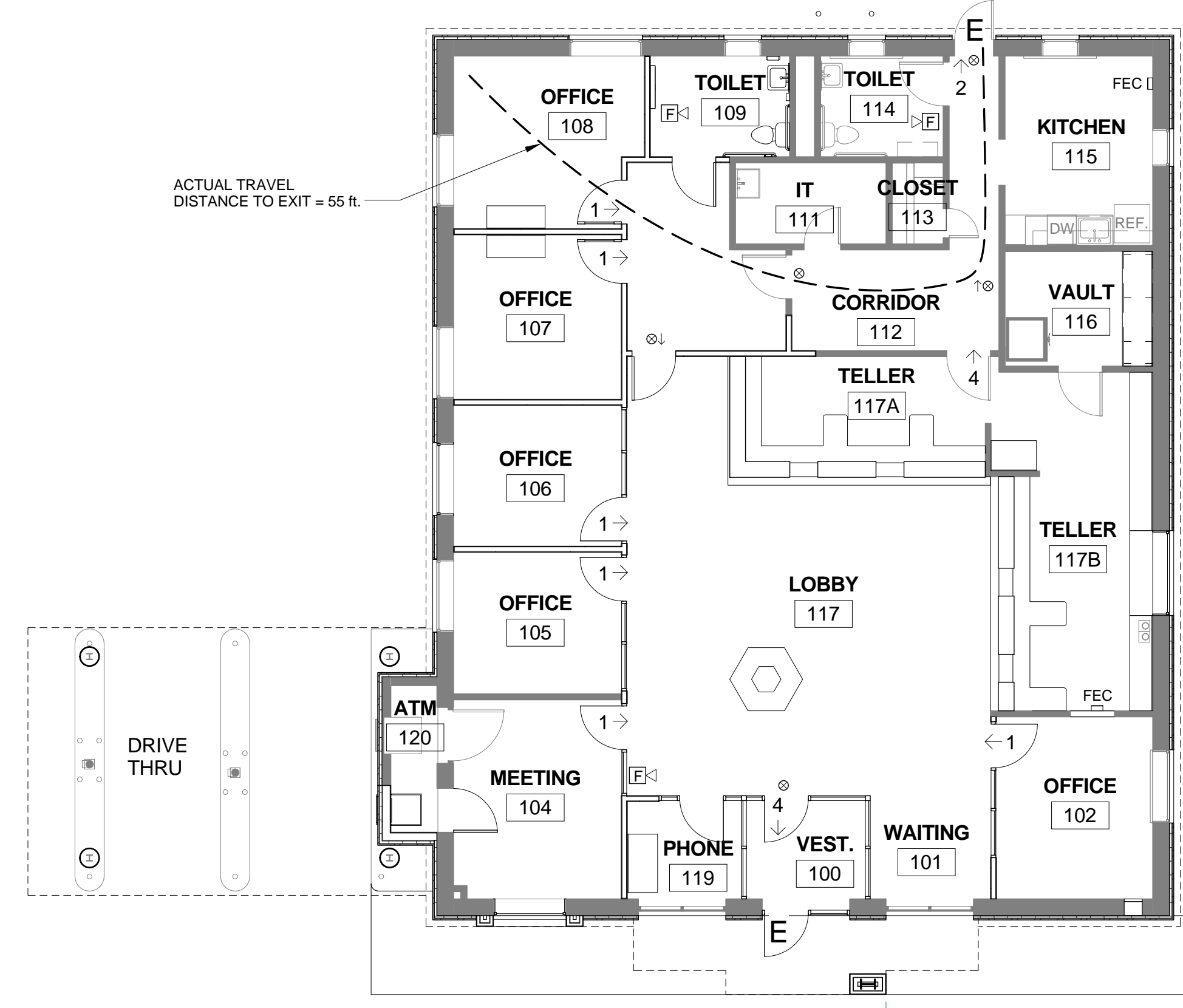


C4 PHASING PLAN
1/8" = 1'-0"

PHASES:

- PHASE 1
- PHASE 2
- PHASE SEPARATION



C2 CODE PLAN
1/8" = 1'-0"

CODE PLAN LEGEND:

EGRESS		LIFE SAFETY	
---	TRAVEL DISTANCE TO EXIT	FEC	FIRE EXTINGUISHER CABINET
E	EXIT DISCHARGE OR EXIT FROM A FLOOR	⊗	EXIT SIGN
# →	DOOR EGRESS TAG	⬆	EMERGENCY LIGHT
		⬆	FIRE HORN / STROBE

ARCHITECTURAL CODE COMPLIANCE SUMMARY

IBC International Building Code 2009 (Amended per Maine Uniform Building and Energy Code - MUBEC)
 NFPA 101 Life Safety Code 2009 Edition
 IBC 2009 (Amended per Maine Uniform Building and Energy Code - MUBEC)
 Portland City Code, Chapter 10, Fire Prevention and Protection

Project Summary:
 Interior renovation of and exterior upgrades to an existing credit union building. Addition of an exterior entry canopy.

Existing Building Summary:
 Occupancy Group: Business Group B
 IBC 2009
 NFPA 101
 Construction Type: IBC IIIA (similar)
 Exterior walls: 12" CMU, strapped with 1x3's and GWB.
 Roof: unprotected steel joists and stl. deck
 Interior walls: wood and metal stud, GWB

Floor Area: 2,811 s.f.
 Building Height: 15.5 ft. (main building), 21ft. at entry canopy
 Level of Exit Discharge: 1st floor
 Non-sprinklered

Proposed New Project Summary:
 Occupancy Group: Group B Business (no change of use)
 Construction Type: IIIA (new walls to be metal stud)
 Floor Area: 2,822 s.f.

Means of Egress:
 Maximum Travel Distance to Exit: IBC 2009 and NFPA 101: 200 feet (without sprinkler system)
 Actual Travel Distance to Exit: 56 feet
 Maximum Common Path of Travel: 75 feet
 Actual Maximum Common Path of Travel: 12 feet
 Maximum Dead End Length: Less than 50 ft.

Occupant Load:
 Load Factors: Business - 100 gross s.f. / person
 Calculated Load: 29 people
 Actual Load: 10 people

No. of Exits Existing:
 2 (direct discharge to outside)

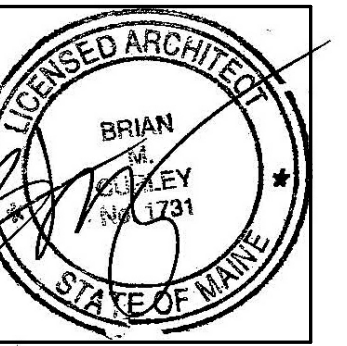
No. of Exits Permitted:
 1, per IBC 1021.2 and NFPA 101 39.2.4.3



49 DARTMOUTH STREET
 PORTLAND, MAINE 04101
 207-775-1059
 www.pdtarchts.com

COPYRIGHT
 PDT Architects
 Reuse or reproduction of the contents of this document is not permitted without written permission of PDT Architects.

CUMBERLAND COUNTY FEDERAL CREDIT UNION
 1345 Washington Avenue, Portland, ME



JOB NO.
12044

DRWN. Author
CHECK Checker

SCALE:
As indicated

ISSUE
30 August, 2013

TITLE
CODE ANALYSIS,
PHASING PLAN

SHEET

G002