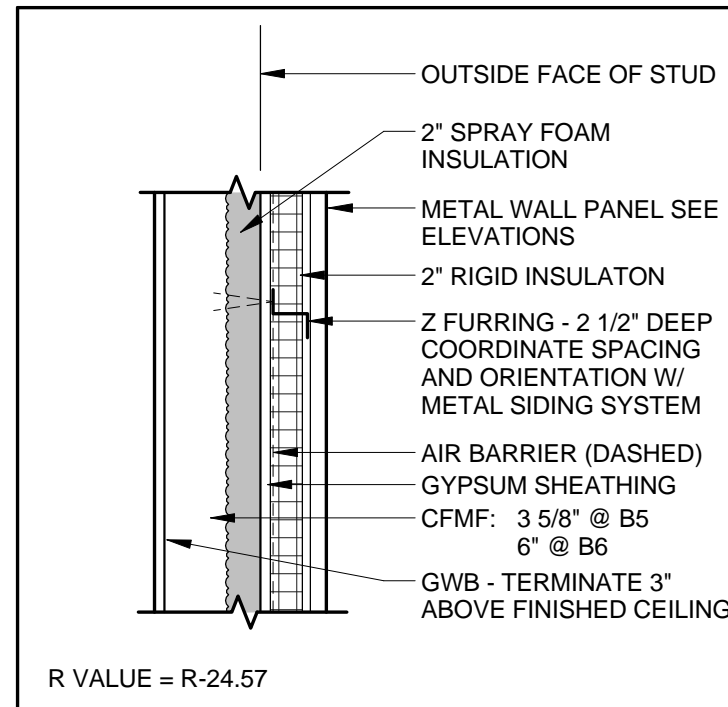
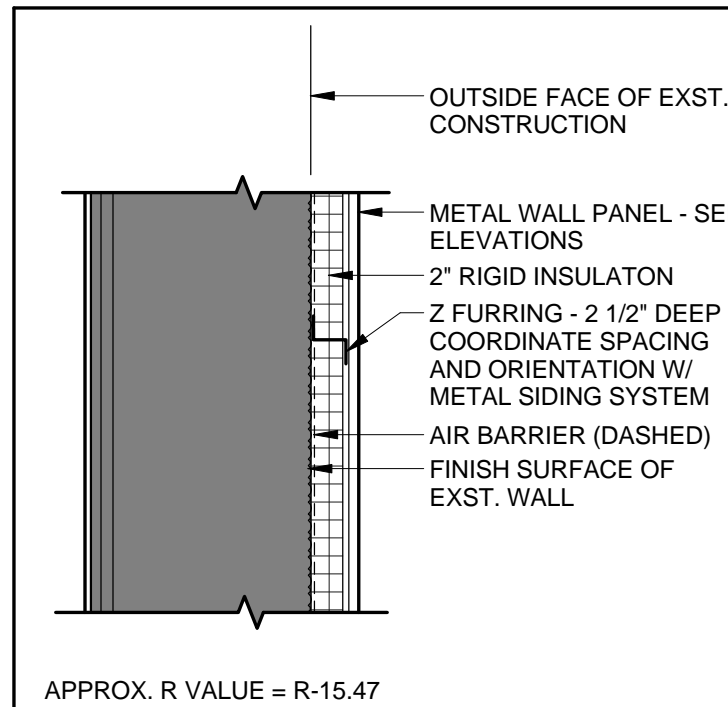


PROJECT GENERAL NOTES

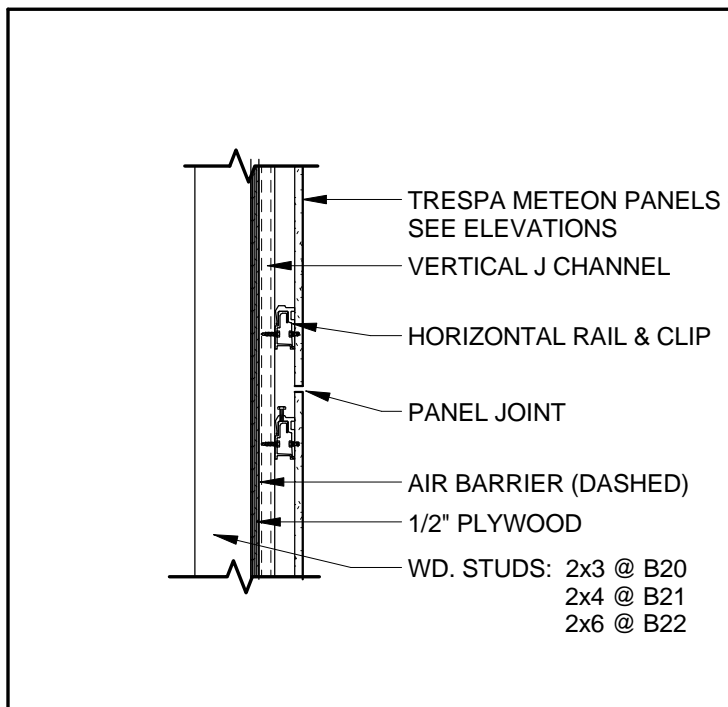
- These notes are intended for general reference and information and to augment the Contract and Specification information provided under separate cover. Refer to those Specifications for detailed information and requirements.
- All Work included in this Contract shall conform to all national, state, and local Codes, Ordinances and Agency requirements including, but not limited to: hazardous material removal, solid waste disposal, seismic design, and life-safety.
- Definitions:**
 - New:** May be used to indicate items which shall be furnished and installed by this Contract. Typically used to ensure clarity between various components of the drawings. Not all items are labeled as "new" when it is obvious by other indication.
 - Existing:** Existing building or site components which are in place at the start of Construction. Not all items are labeled as "existing" when it is obvious by other indication. Consult the Architect for clarification.
 - Repair:** Restore to proper operating and aesthetic condition.
 - Restore:** Bring back to former condition, by repairing or patching as required.
 - Patch:** Restore to condition matching existing adjacent construction, surface texture and finish. After removal of building components as indicated, patch and prepare the remaining existing exposed surfaces to receive new work and finish, including but not limited to: level floors at wall removals; tooth-in new CMU at openings; piece-in new plaster backing and finish flush; piece in new ceiling suspension system.
 - N.I.C. (Not in Contract):** Work which is not included in this Contract, but which may require Contractor coordination.
 - Remove:** Dismantle and/or extract from the premises entirely. Dispose of off site unless noted otherwise.
 - Replace:** Dismantle and/or extract from the premises entirely. Dispose of off site unless noted otherwise. Provide new material as indicated.
 - Damages:** Existing building or site components, not scheduled for work, which are damaged. Such elements and components shall be replaced or restored to original condition by methods approved by the Architect.
 - Demolish:** Dismantle and/or extract from the premises entirely. Dispose of off site unless noted otherwise.
 - Salvage:** Remove and reinstall or remove and deliver to the Owner, as indicated. Salvaged components may be for limited reuse, to match existing conditions or to patch and repair as indicated.
- It is the intent of the drawings and specifications to have the Contractor provide a complete, fully operational building. Provide all labor, materials and incidentals necessary to achieve this intent. Failure of the Drawings or Specifications to indicate each incidental shall not relieve the Contractor from providing the necessary items as part of this Contract. The Drawings show the design and layout, describe the quality level and construction techniques in a general sense only. All details are typical. What is shown in one condition applies to all other similar conditions, unless noted otherwise.
- Verify the following items and report any discrepancies to the Architect prior to proceeding with Work, and proceed with the Work only after such discrepancies are resolved by the Architect:
 - Existing conditions
 - The size and location of all existing utilities.
 - Discrepancies between or within the Contract Documents.
 - Unsuitable soils: report the location of all unsuitable soil materials below anticipated levels of footings or slabs prior to setting forms.
 - Mechanical, electrical and plumbing coordination having potential impact on ceiling heights or building appearance
 - Dimensional discrepancies.
- Provide bond-outs, blocking, sleeves and pipes as required for all wall, floor, roof, and ceiling penetrations through structure. Coordinate installation of all structural, mechanical, plumbing and electrical components. Seal all penetrations in fire rated assemblies and smoke assemblies to conform to U.L. rated assemblies and all NFPA and BOCA building Code requirements. All penetrations shall also comply with the acoustical assembly rating required for each wall or floor assembly. Refer to the Code Plans for specific Code references.
- Mechanical, electrical and plumbing coordination: ceiling heights and duct sizes are given. Coordinate the Work to achieve the given visual and performance requirements, and the requirement of including mechanical, electrical and plumbing systems within the indicated space.
- Do not penetrate structural beams, columns, or shear walls unless specifically detailed otherwise.
- Coordinate the Work of all Subcontractors.
- Provide work holes and access holes to install new systems in concealed spaces, as required or indicated.
- Provide 1" min. clear where structural, mechanical, or electrical items penetrate interior CMU walls. Fill voids with fiberglass batt insulation at non-rated walls and firestopping system at rated walls.
- Use pre-formed, compressed neoprene fillers at top of wall where exposed.
- See structural drawings for reinforcement and bond beam locations.
- See exterior elevations and details for metal siding types / design.
- Smoke partitions indicated on plans shall comply with NFPA 101. All penetrations shall be protected by a system or material that is capable of limiting the transfer of smoke. Joints made within or at the perimeter of smoke partitions shall be protected with a joint system that is capable of limiting the transfer of smoke.



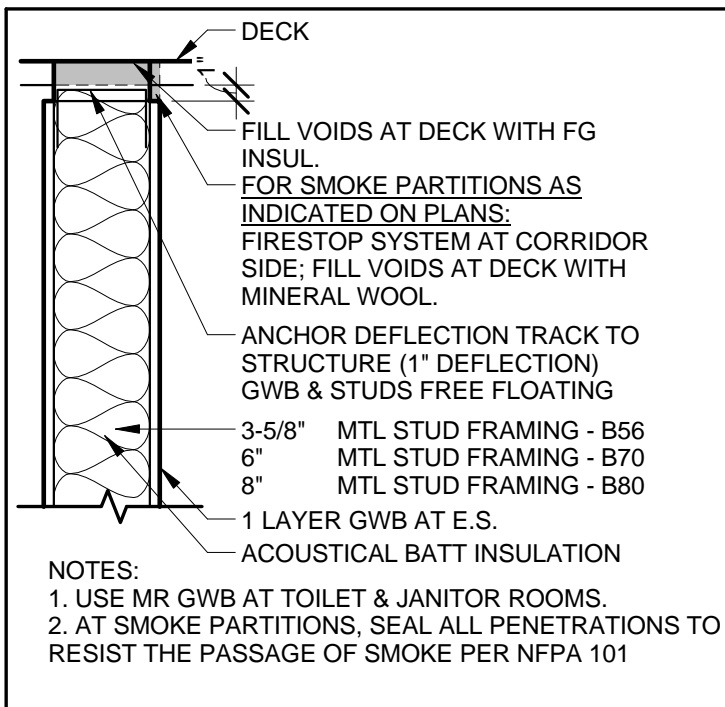
METAL WALL PANELS AT CFMF BACKUP B5 B6



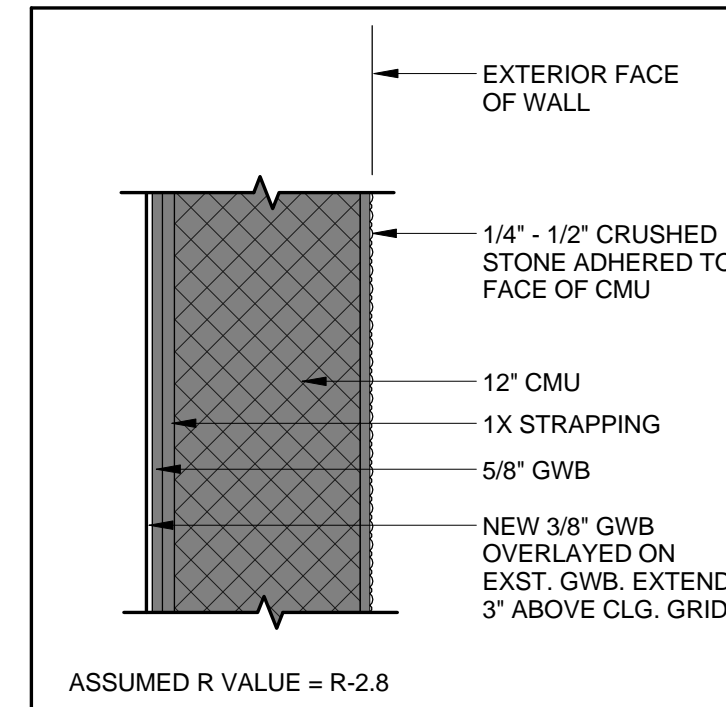
METAL WALL PANELS ON EXISTING EXTERIOR CMU WALL B10



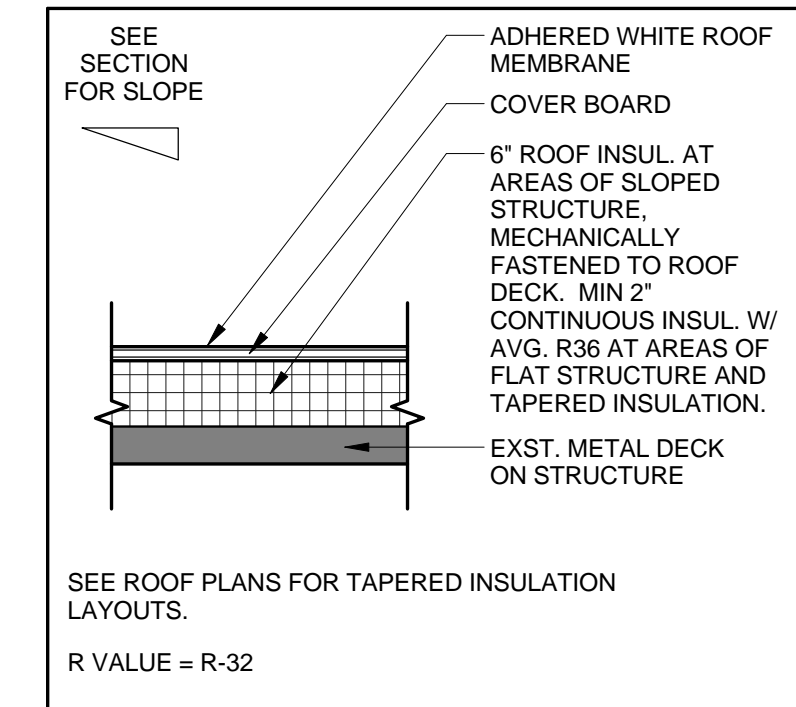
TRESPA WALL PANEL SYSTEM - REFER TO MFG'RS. INSTALLATION INSTRUCTIONS B20 B21 B22



METAL STUD PARTITION FULL HEIGHT B56 B70 B80

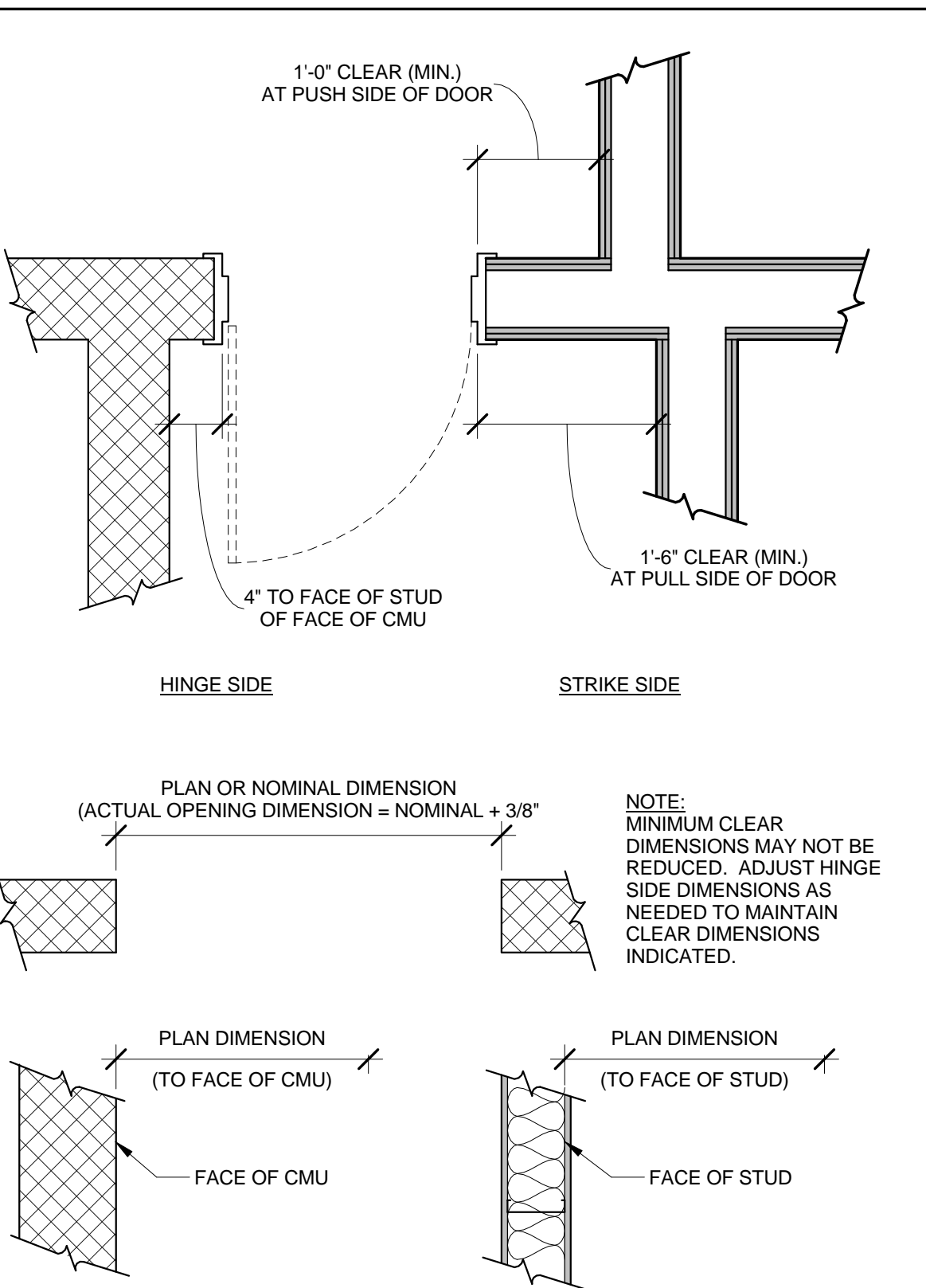


EXISTING EXTERIOR WALL SYSTEM W/ NEW LAYER GWB

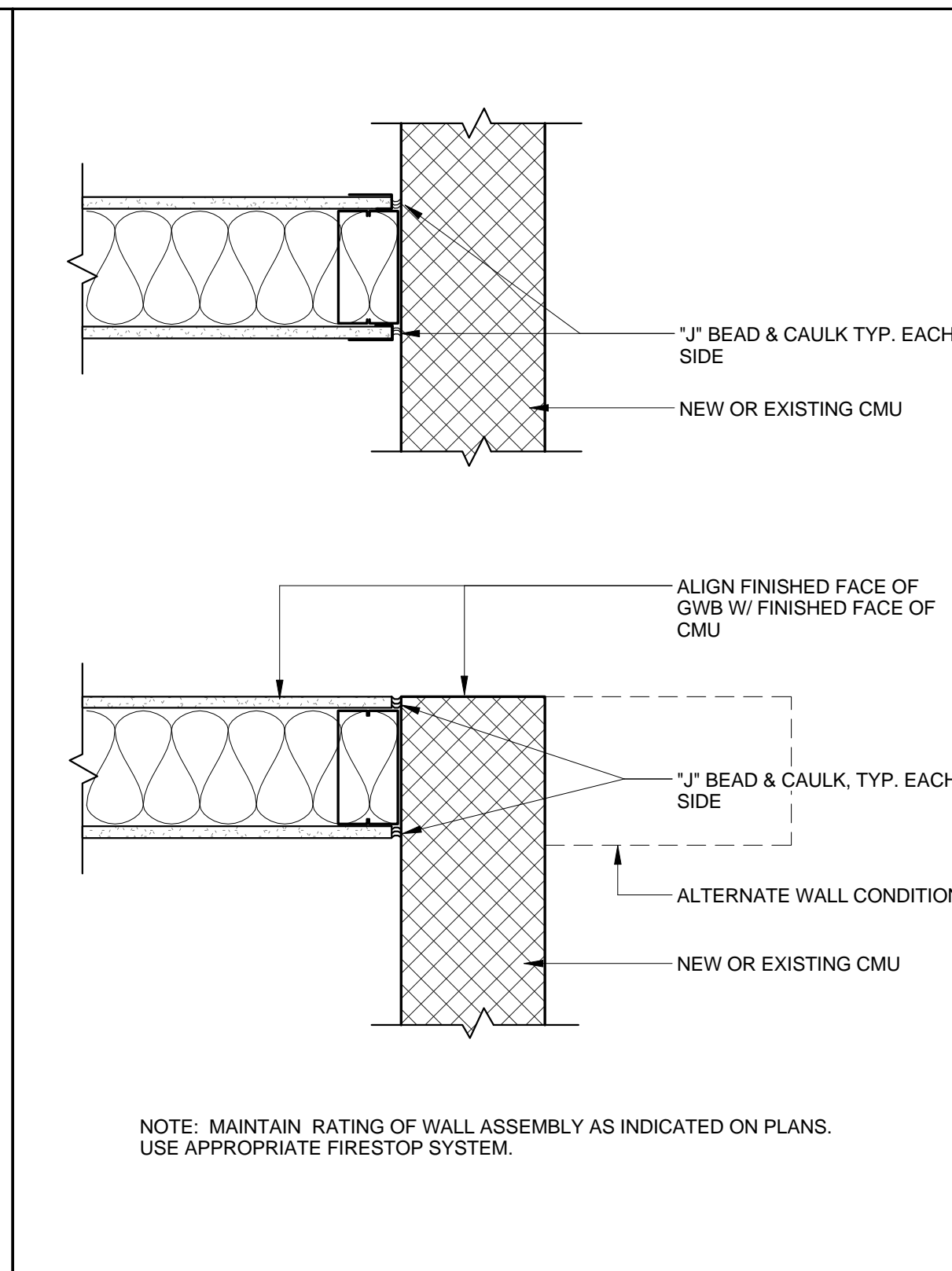


SINGLE-PLY MEMBRANE ROOFING ON METAL DECK R1

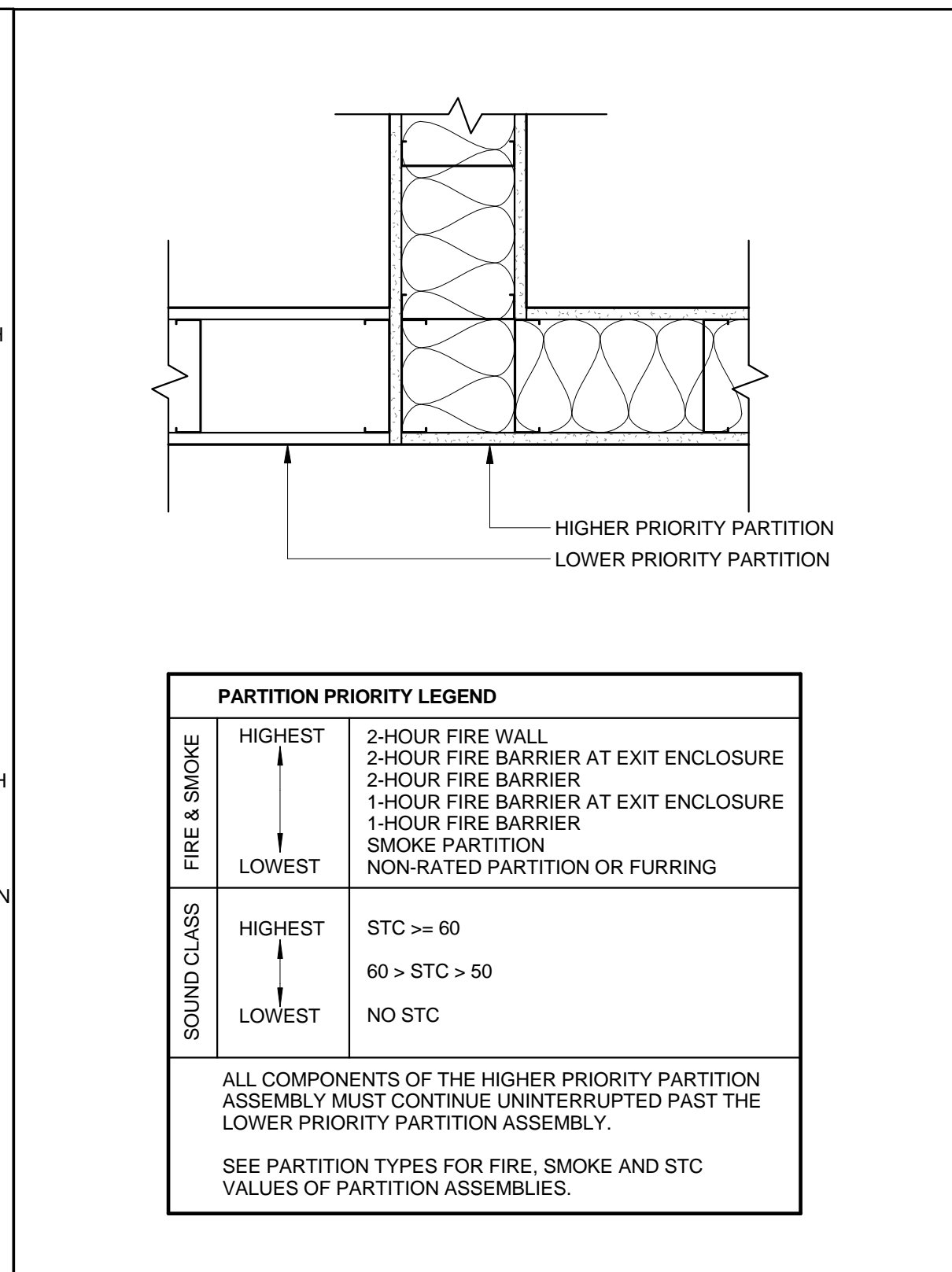
PARTITION TYPES



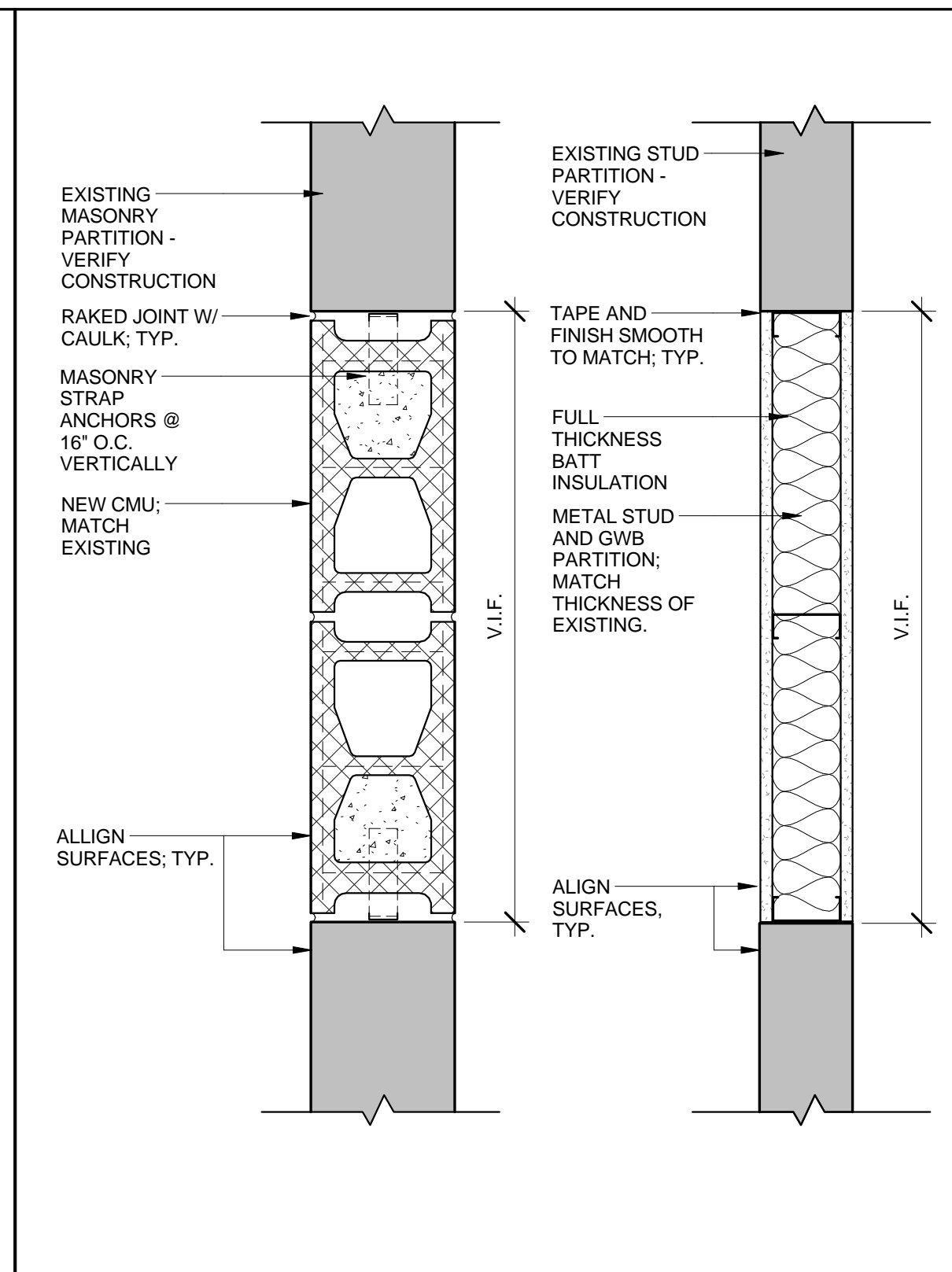
DIMENSIONAL STANDARDS



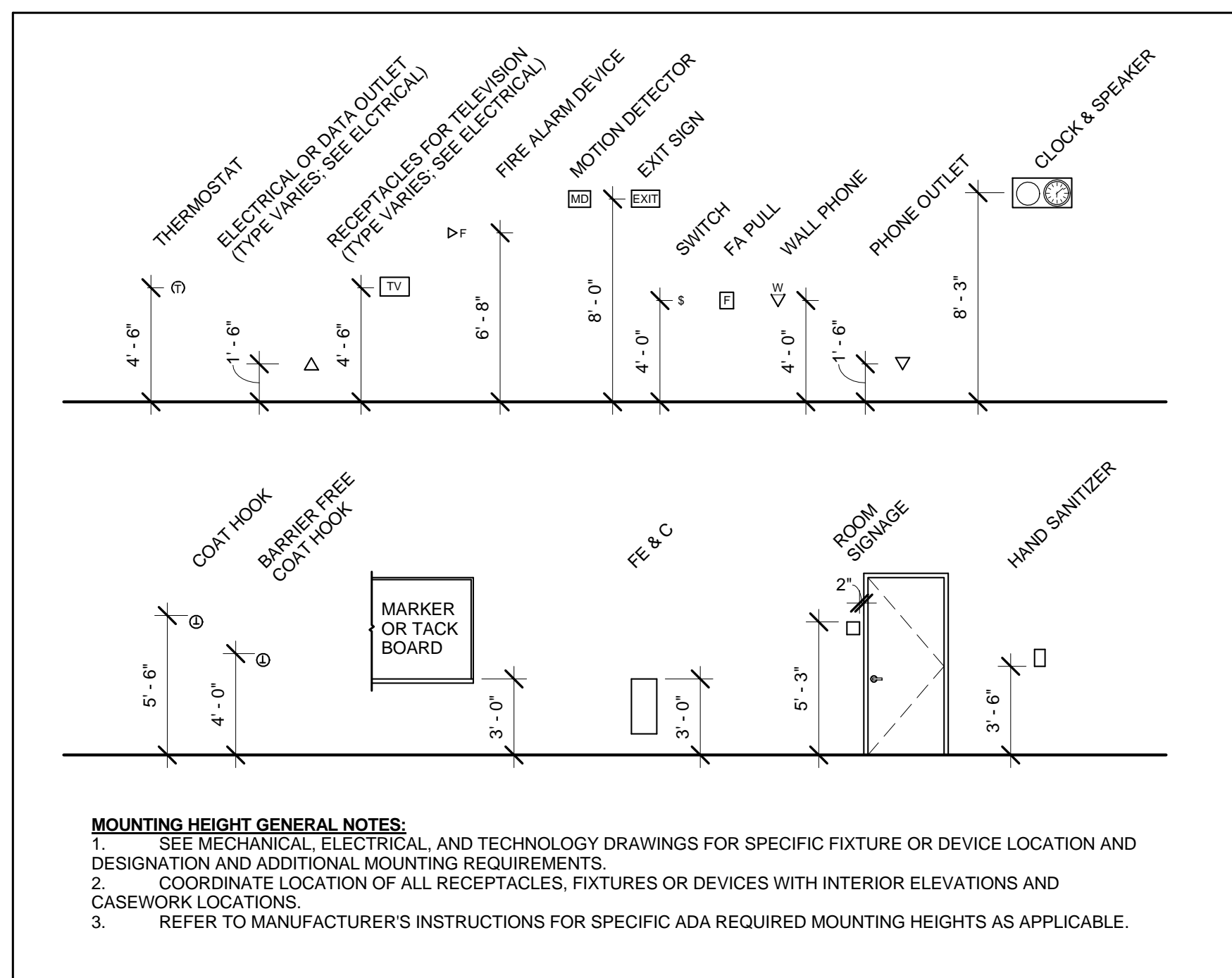
PARTITION STANDARDS



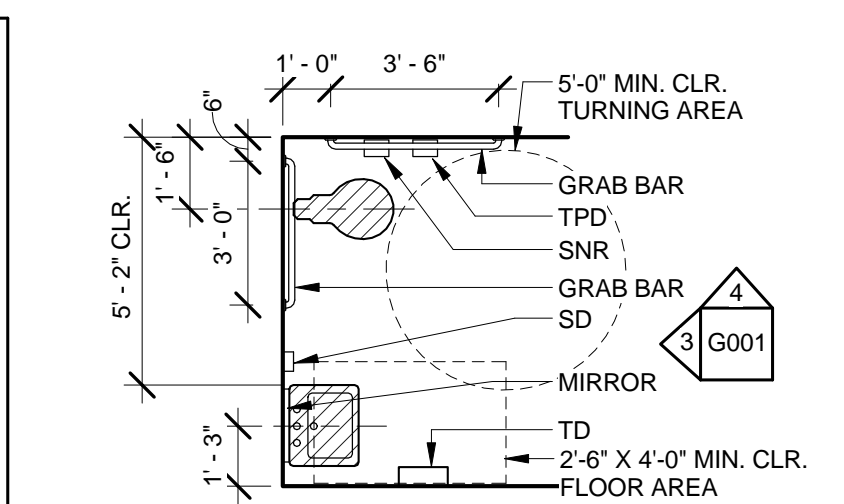
PARTITION PRIORITY



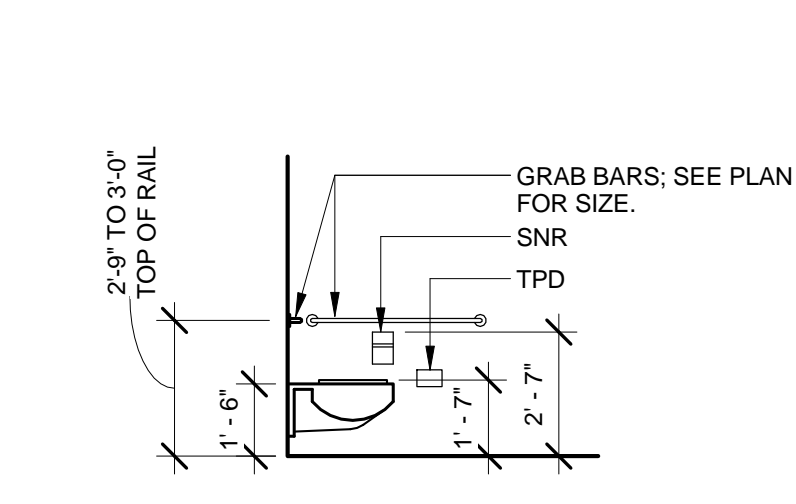
EXISTING PARTITION - INFILL



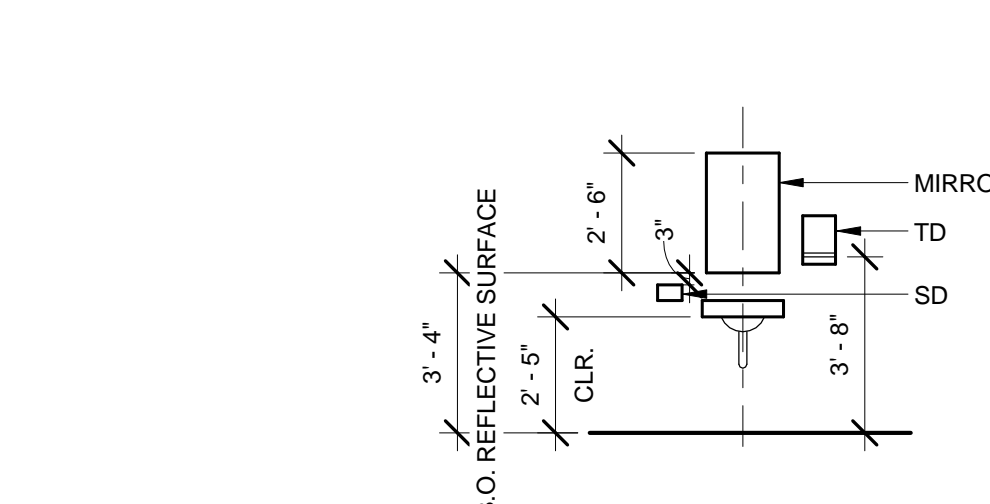
1 TYPICAL MOUNTING HEIGHTS 3/16" = 1'-0"



2 TYPICAL BARRIER FREE SINGLE TOILET PLAN 1/4" = 1'-0"



3 TYP. BARRIER FREE WATER CLOSET ASSEMBLY ELEVATION 1/4" = 1'-0"



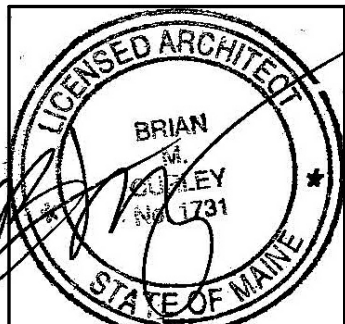
4 TYPICAL BARRIER FREE LAVATORY ASSEMBLY ELEVATION 1/4" = 1'-0"



49 DARTMOUTH STREET
PORTLAND, MAINE 04101
207-775-1059
www.pdtarch.com

COPYRIGHT
PDT Architects
Reuse or reproduction of the contents of this document is not permitted without written permission of PDT Architects.

CUMBERLAND COUNTY FEDERAL CREDIT UNION
1345 Washington Avenue, Portland, ME



JOB NO.
12044

DRWN. Author
CHECK Checker

SCALE:
As indicated

ISSUE
30 August, 2013

TITLE
SYSTEMS & GENERAL NOTES

SHEET

G001