

SHEET NOTES

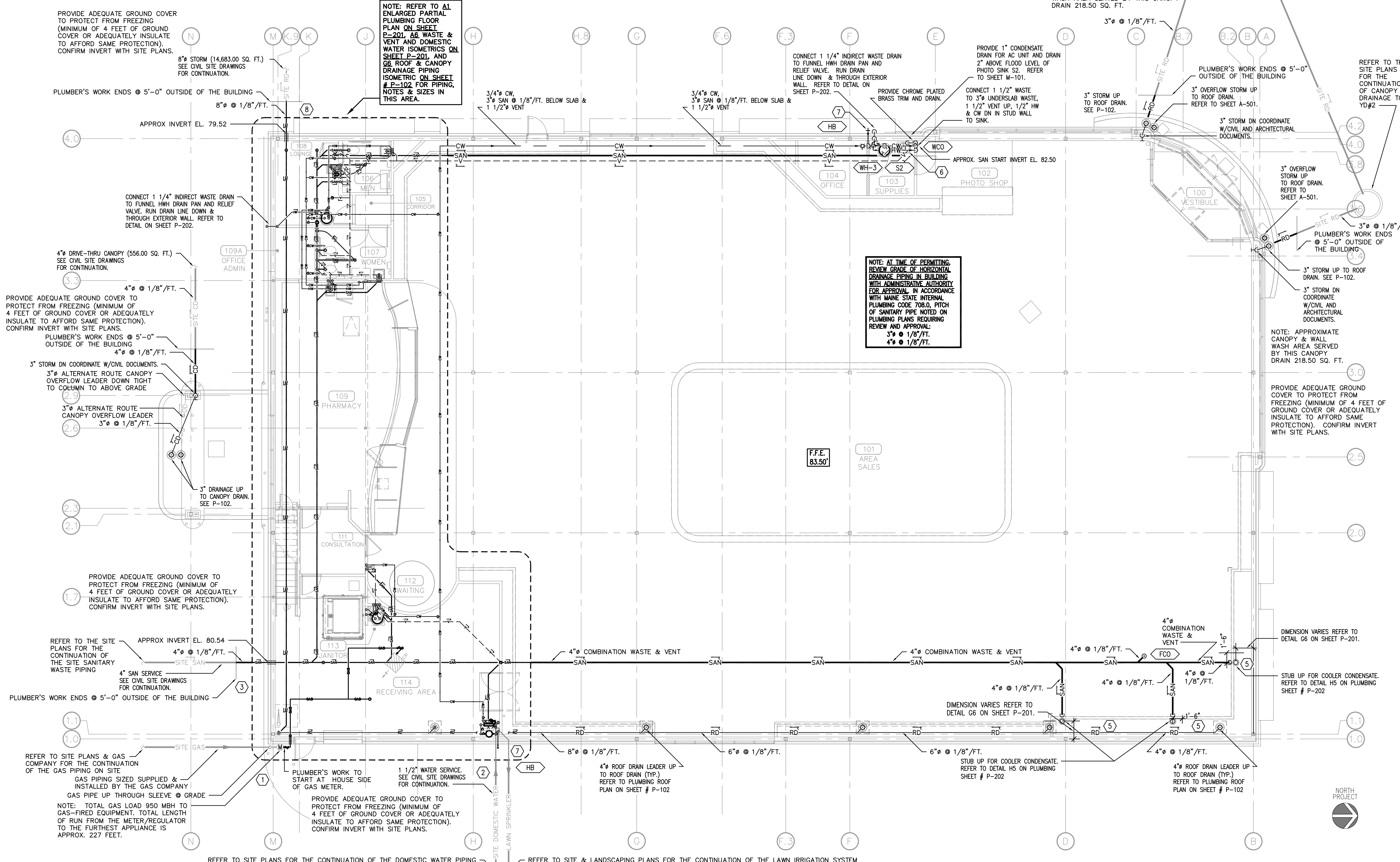
- 1. GAS SERVICE WITH GAS METER AND PRESSURE REGULATOR PROVIDED BY LOCAL GAS UTILITY PROVIDER. PROVIDE SCHEDULE 40 BLACK STEEL GAS DISTRIBUTION SYSTEM AS SHOWN. PROVIDE DIRT LEG, GAS COCK, AND CONTROL VALVE TO EACH GAS UNIT IF NOT PROVIDED BY THE UNIT MANUFACTURER.
2. 1-1/2" WATER ENTRY INTO BUILDING. PROVIDE BACKFLOW PREVENTION, 3/4" NON-POTABLE IRRIGATION LINE, AND SUB-METER UNDER STAIRWELL. REFER TO DETAIL E10 ON SHEET P-202.
3. 4" SANITARY SERVICE TO BUILDING.
4. NOT USED.
5. PROVIDE 3" STAND PIPE TO SERVE THE COOLERS/FREEZERS. PIPE 1-1/2" PVC DRAIN LINES FROM COOLERS/FREEZERS TO STAND PIPES. REFER TO DETAIL H5 ON SHEET P-202.
6. PIPE SILVER RECOVERY DISCHARGE TO SUPPLIES SINK P-TRAP. REFER TO DETAIL H1 ON SHEET P-202.
7. PROVIDE HOSE BIBB (FROSTPROOF WALL HYDRANT W/VACUUM BREAKER). COORDINATE LOCATION WITH RITE AID CONSTRUCTION MANAGER. REFER TO SHEET P-202 FOR C1 PLUMBING FIXTURE SCHEDULE AND H15 HOSE BIBB DETAIL.
8. STORM SERVICE TO BUILDING. REFER TO SHEET P-102 FOR ADDITIONAL STORM DRAINAGE INFORMATION.

GENERAL NOTES

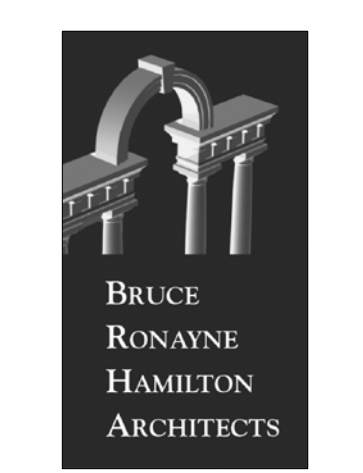
- 1. COORDINATE NUMBER OF DRAINS REQUIRED AND EXACT LOCATIONS WITH FREEZER/COOLER ROOM.
2. SEE SHEET P-102 FOR ADDITIONAL PLUMBING INFORMATION AND MECHANICAL AND ELECTRICAL PLANS FOR SPECIFIC INFORMATION FOR THOSE TRADES.
3. COORDINATE WITH CIVIL DOCUMENTS FOR SITE UTILITIES.
4. COMPLY WITH PREVAILING LOCAL, STATE AND FEDERAL STANDARDS, CODES, REGULATIONS, ORDINANCES AND LAWS, INCLUDING BUT NOT LIMITED TO, MAINE STATE INTERNAL PLUMBING CODE AND THE NFPA 54 NATIONAL FUEL GAS CODE.

LEGEND

Table with 2 columns: Symbol and Description. Includes entries for SAN (Sanitary Piping Below Ground), RD (Roof Drainage Piping Above Ground), GAS (Natural Gas), CW (Cold Water Piping), HW (Hot Water Piping), and various valves and fixtures.



A1 MEZZANINE PLAN 1/8" = 1'-0"
A3 PLUMBING FLOOR PLAN 1/8" = 1'-0"



ARCHITECTURE LAND PLANNING INTERIOR DESIGN 3D VISUALIZATION
847 WINDYBROOK ROAD
P.O. BOX 314
NEW HAMPSHIRE 03071

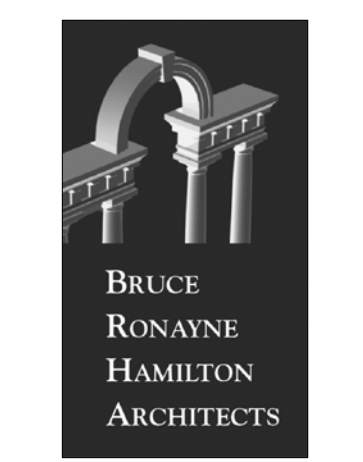
DESIGN DAY MECHANICALS INC
CORPORATE: 100 WASHINGTON AVENUE, SUITE 1000, PORTLAND, ME 04101
PHONE: 603.888.2355
FAX: 603.888.2356

RITE AID STORE #4122
WASHINGTON & ALLEN AVENUE
PORTLAND, MAINE



REVISIONS
Date: 10/27/06
Project No: 0525/DDM 0696
Date: 10/27/06

PLUMBING FLOOR PLAN AND MEZZANINE PLAN



BRUCE
RONAYNE
HAMILTON
ARCHITECTS

ARCHITECTURE
LAND PLANNING
INTERIOR DESIGN
3D VISUALIZATION

637 WINDYBROOK ROAD
P.O. BOX 104
NEW BRUNSWICK
NEW HAMPSHIRE 03071

DESIGN DAY
MECHANICALS INC

COORDINATE: IMPERIAL/DOE, ANSULVA, IN, ODOOR
DATE: 10/27/06
REVISION: 1. PLUMBING PLAN, ALL MEASUREMENTS IN FEET AND INCHES UNLESS OTHERWISE NOTED.
DATE: 10/27/06
BY: J. B. BROWN

RITE AID STORE #4122
WASHINGTON & ALLEN AVENUE
PORTLAND, MAINE

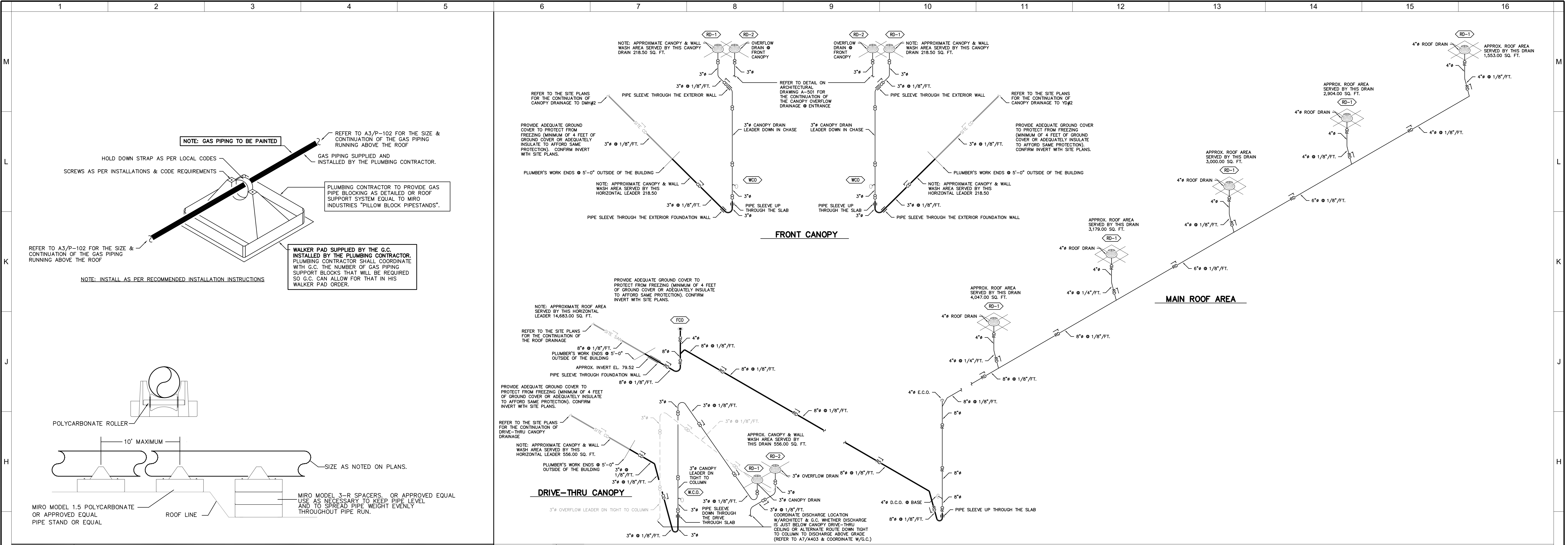


REVISIONS
No. 1
Date 10-27-06
Issued FOR BUILDING PERMIT/OC BIDDING

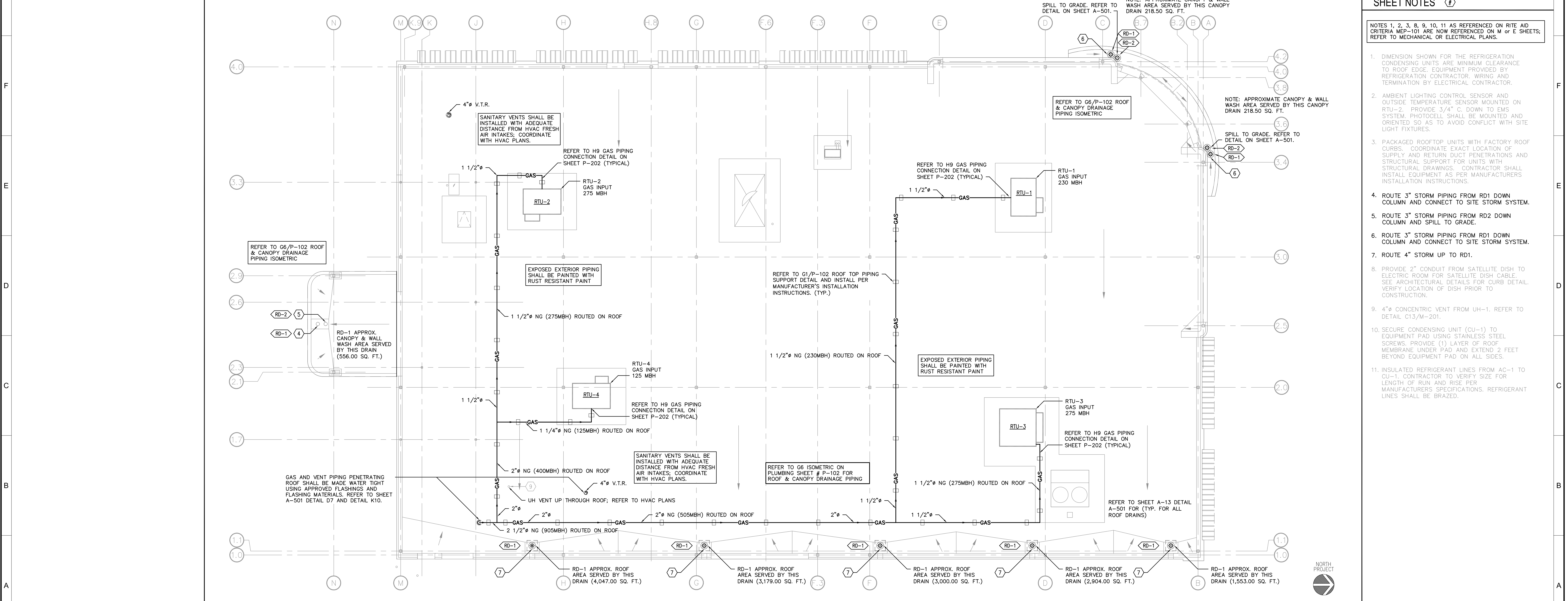
Drawn RDG
Checked DEG
Approved DEG
Project No. 0525/DDM 0696
Date: 10/27/06

Title
PLUMBING ROOF PLAN,
RAIN LEADER
ISOMETRIC,
DETAIL

Sheet No.
P-102
Plumbing Sheet 2 of 4



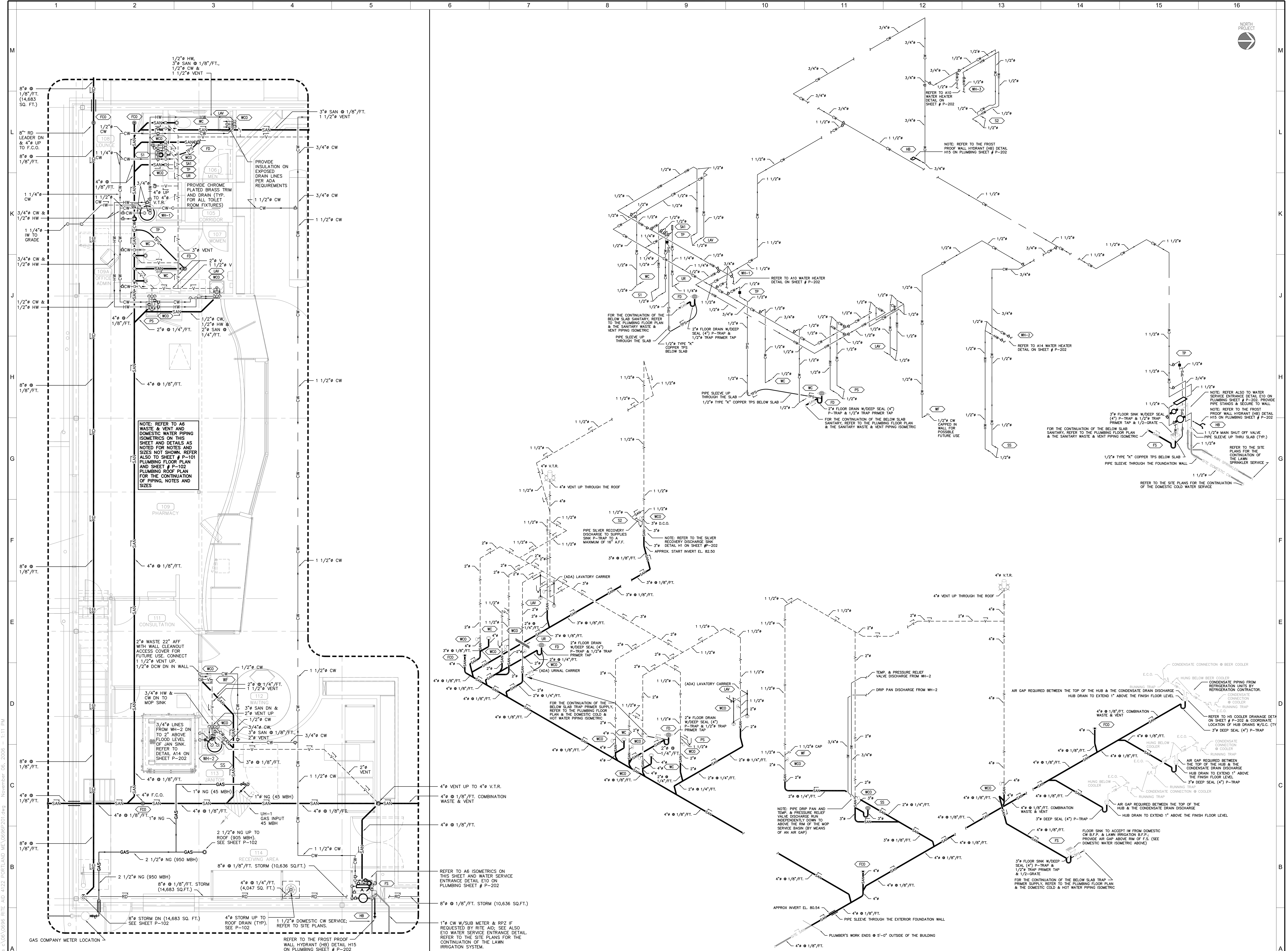
G1 ROOF TOP PIPING SUPPORT DETAIL
G6 ROOF & CANOPY DRAINAGE PIPING ISOMETRIC



A3 PLUMBING ROOF PLAN
1/8" = 1'-0"

- SHEET NOTES**
- NOTES 1, 2, 3, 8, 9, 10, 11 AS REFERENCED ON RITE AID CRITERIA MEP-101 ARE NOW REFERENCED ON M OR E SHEETS; REFER TO MECHANICAL OR ELECTRICAL PLANS.
 - DIMENSION SHOWN FOR THE REFRIGERATION CONDENSING UNITS ARE MINIMUM CLEARANCE TO ROOF EDGE. EQUIPMENT PROVIDED BY REFRIGERATION CONTRACTOR. WIRING AND TERMINATION BY ELECTRICAL CONTRACTOR.
 - AMBIENT LIGHTING CONTROL SENSOR AND OUTSIDE TEMPERATURE SENSOR MOUNTED ON RTU-2. PROVIDE 3/4" C. DOWN TO EMS SYSTEM. PHOTOCELL SHALL BE MOUNTED AND ORIENTED SO AS TO AVOID CONFLICT WITH SITE LIGHT FIXTURES.
 - PACKAGED ROOFTOP UNITS WITH FACTORY ROOF CURBS. COORDINATE EXACT LOCATION OF SUPPLY AND RETURN DUCT PENETRATIONS AND STRUCTURAL SUPPORT FOR UNITS WITH STRUCTURAL DRAWINGS. CONTRACTOR SHALL INSTALL EQUIPMENT AS PER MANUFACTURER'S INSTALLATION INSTRUCTIONS.
 - ROUTE 3" STORM PIPING FROM RD1 DOWN COLUMN AND CONNECT TO SITE STORM SYSTEM.
 - ROUTE 3" STORM PIPING FROM RD2 DOWN COLUMN AND SPILL TO GRADE.
 - ROUTE 3" STORM PIPING FROM RD1 DOWN COLUMN AND CONNECT TO SITE STORM SYSTEM.
 - ROUTE 4" STORM UP TO RD1.
 - PROVIDE 2" CONDUIT FROM SATELLITE DISH TO ELECTRIC ROOM FOR SATELLITE DISH CABLE. SEE ARCHITECTURAL DETAILS FOR CURB DETAIL. VERIFY LOCATION OF DISH PRIOR TO CONSTRUCTION.
 - 4" CONCENTRIC VENT FROM UH-1. REFER TO DETAIL C13/M-201.
 - SECURE CONDENSING UNIT (CU-1) TO EQUIPMENT PAD USING STAINLESS STEEL SCREWS. PROVIDE (1) LAYER OF ROOF MEMBRANE UNDER PAD AND EXTEND 2 FEET BEYOND EQUIPMENT PAD ON ALL SIDES.
 - INSULATED REFRIGERANT LINES FROM AC-1 TO CU-1. CONTRACTOR TO VERIFY SIZE FOR LENGTH OF RUN AND RISE PER MANUFACTURER'S SPECIFICATIONS. REFRIGERANT LINES SHALL BE BRAZED.





NOTE: REFER TO A6 WASTE & VENT AND DOMESTIC WATER PIPING ISOMETRICS ON THIS SHEET AND DETAILS AS NOTED FOR NOTES AND SIZES NOT SHOWN. REFER ALSO TO SHEET # P-101 PLUMBING FLOOR PLAN AND SHEET # P-102 PLUMBING ROOF PLAN FOR THE CONTINUATION OF PIPING, NOTES AND SIZES

2" WASTE 22" AFF WITH WALL CLEANOUT ACCESS COVER FOR FUTURE USE. CONNECT 1 1/2" VENT UP. 1/2" CW DN IN WALL

3/4" LINES FROM WH-2 DN TO 2" ABOVE FLOOD LEVEL OF JAN SINK. REFER TO DETAIL A14 ON SHEET P-202

2 1/2" NG UP TO ROOF (950 MBH). 8" x 1/8" AFF. STORM (14,683 SQ.FT.). 4" STORM UP TO ROOF DRAIN (TYP). SEE SHEET P-102

REFER TO THE FROST PROOF WALL HYDRANT (HB) DETAIL H15 ON PLUMBING SHEET # P-202

REFER TO A6 ISOMETRICS ON THIS SHEET AND WATER SERVICE ENTRANCE DETAIL E10 ON PLUMBING SHEET # P-202

1" CW W/SUB METER & RPZ IF REQUESTED BY RITE AID; SEE ALSO E10 WATER SERVICE ENTRANCE DETAIL. REFER TO THE SITE PLANS FOR THE CONTINUATION OF THE IRRIGATION SYSTEM.

NOTE: REFER TO THE FROST PROOF WALL HYDRANT (HB) DETAIL H15 ON PLUMBING SHEET # P-202

REFER TO A10 WATER HEATER DETAIL ON SHEET # P-202

REFER TO A14 WATER HEATER DETAIL ON SHEET # P-202

NOTE: REFER ALSO TO WATER SERVICE ENTRANCE DETAIL E10 ON PLUMBING SHEET # P-202. PROVIDE PIPE STANDS & SECURE TO WALL

NOTE: REFER TO THE FROST PROOF WALL HYDRANT (HB) DETAIL H15 ON PLUMBING SHEET # P-202

NOTE: REFER TO THE SILVER RECOVERY DISCHARGE TO SUPPLIES SINK P-TRAP TO A MAXIMUM OF 10" A.F.F. APPROX. START INVERT EL. 82.50

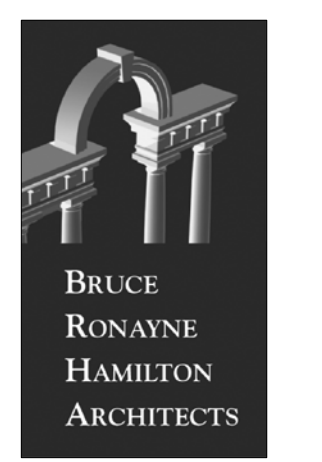
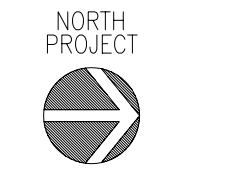
TEMP. & PRESSURE RELIEF VALVE DISCHARGE FROM WH-2

CONDENSATE CONNECTION @ BEER COOLER

CONDENSATE CONNECTION @ COOLER

CONDENSATE CONNECTION @ COOLER

FLOOR SINK TO ACCEPT IW FROM DOMESTIC CW B.P. & LAIN IRRIGATION B.P. PROVIDE AIR GAP ABOVE RM OF F.S. (SEE DOMESTIC WATER ISOMETRIC ABOVE)



BRUCE RONAYNE HAMILTON ARCHITECTS
ARCHITECTURE
LAND PLANNING
INTERIOR DESIGN
3D VISUALIZATION

445 WINDYBROOK ROAD
P.O. BOX 104
NEW BRUNSWICK
NEW HAMPSHIRE 03071

DESIGN DAY
MECHANICALS INC
COORDINATOR: JIMPLEY DOWE, P.E. (NH 00002)
DATE: 10/27/06
THIS DRAWING IS THE PROPERTY OF MECHANICALS INC. AND IS TO BE USED ONLY FOR THE PROJECT AND SITE SPECIFICALLY IDENTIFIED THEREON. ANY REUSE OR MODIFICATION OF THIS DRAWING WITHOUT THE WRITTEN PERMISSION OF MECHANICALS INC. IS STRICTLY PROHIBITED.

RITE AID STORE #4122
WASHINGTON & ALLEN AVENUE
PORTLAND, MAINE



REVISIONS
No. 1
Date: 10-27-06
Issued for BIDDING PERMIT/LOG BIDDING

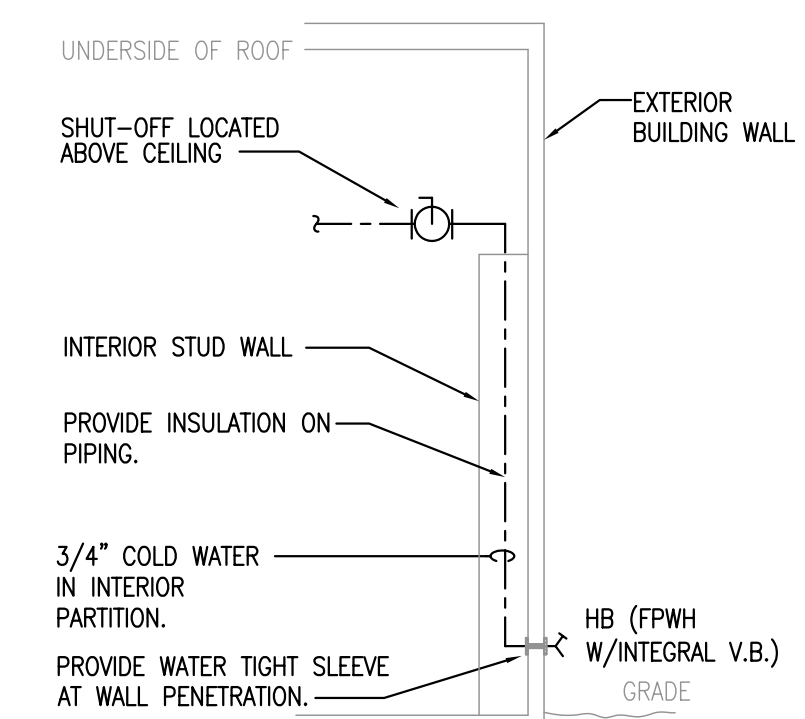
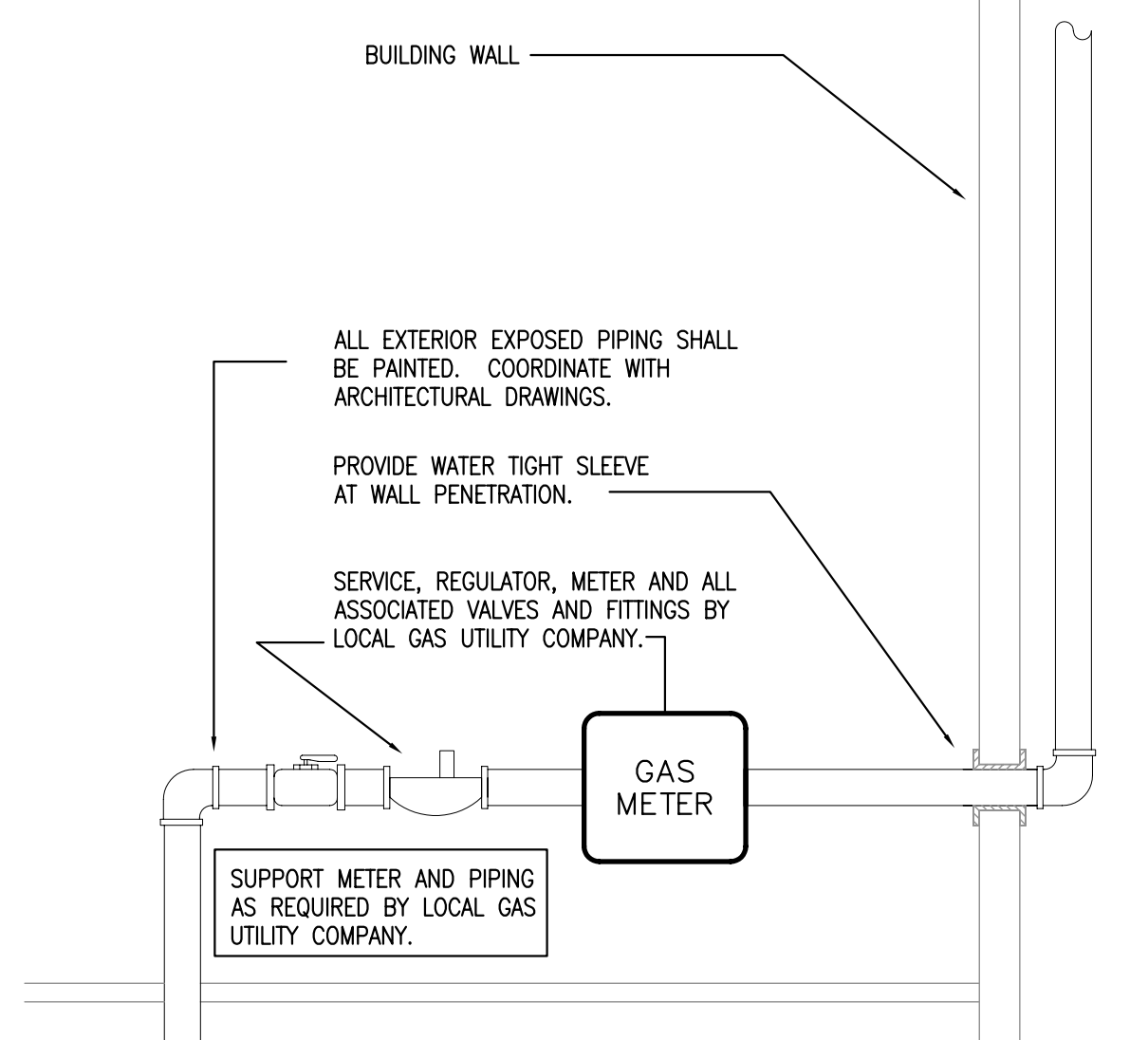
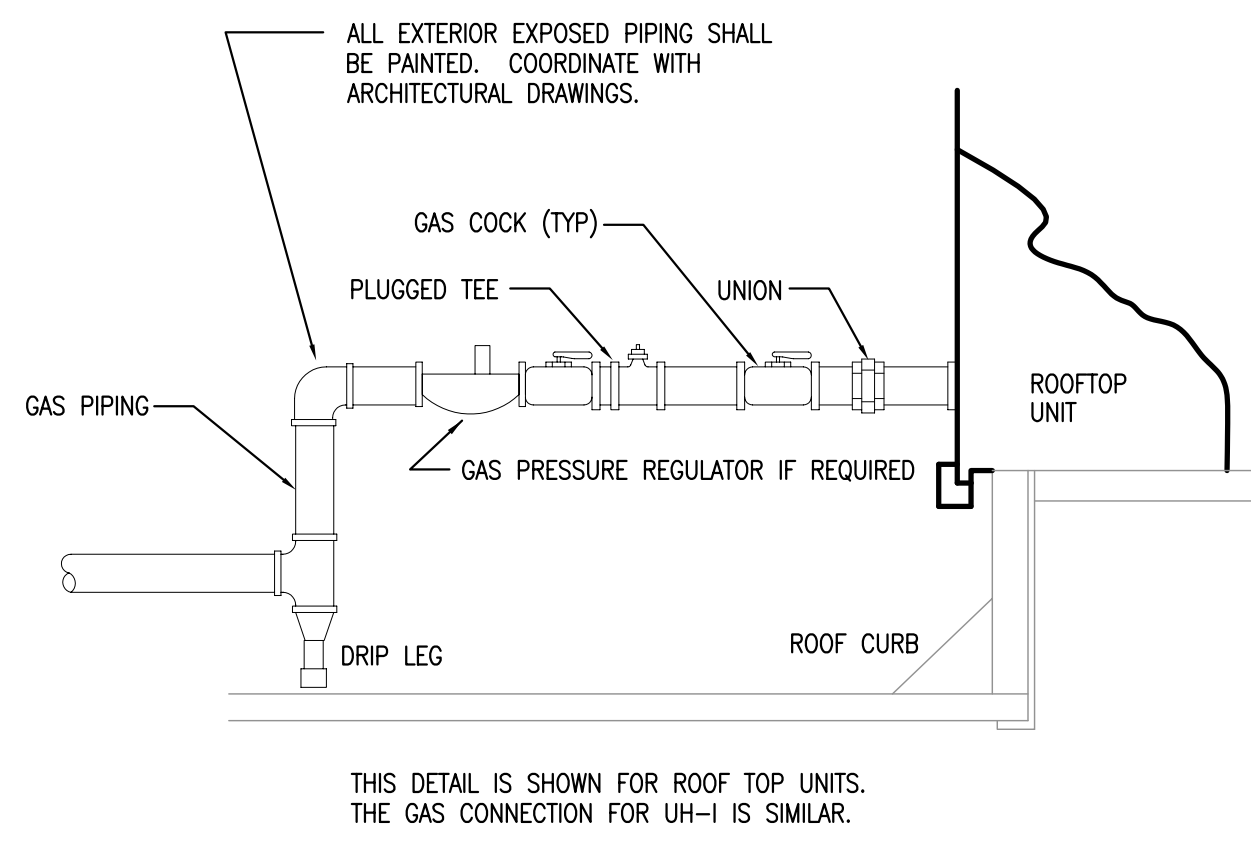
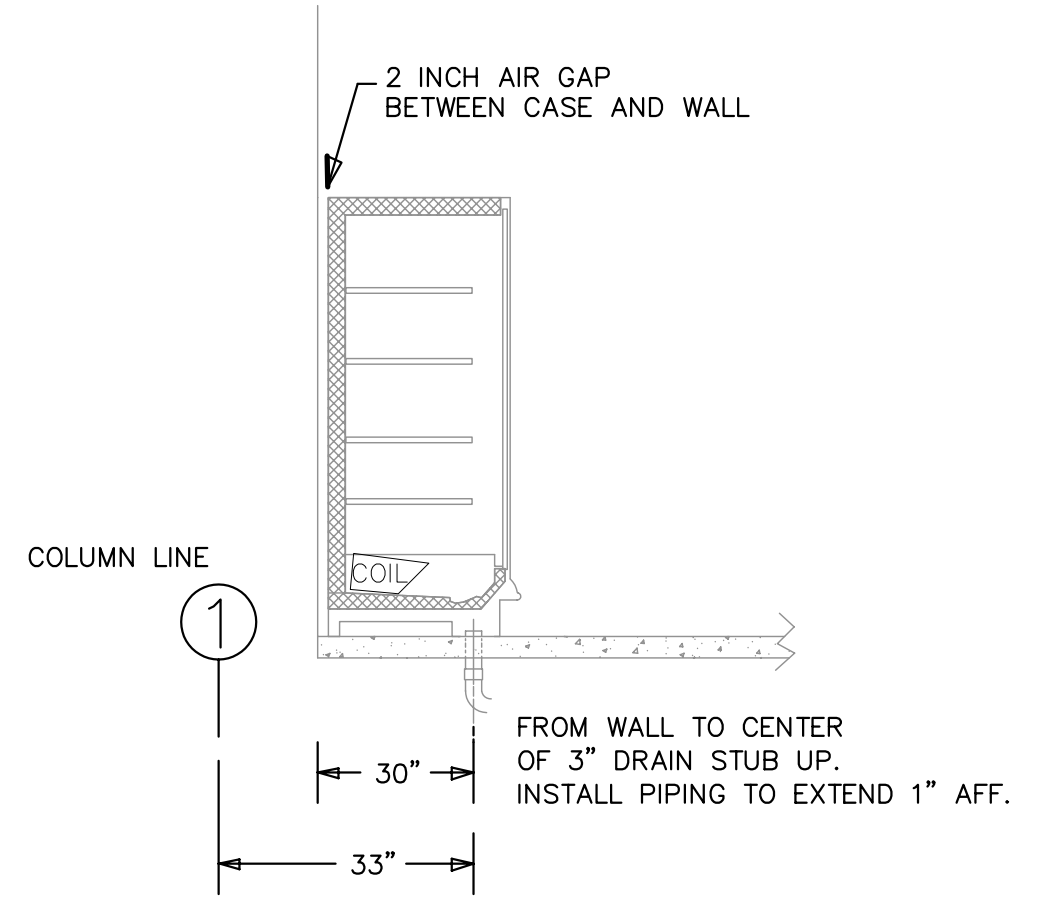
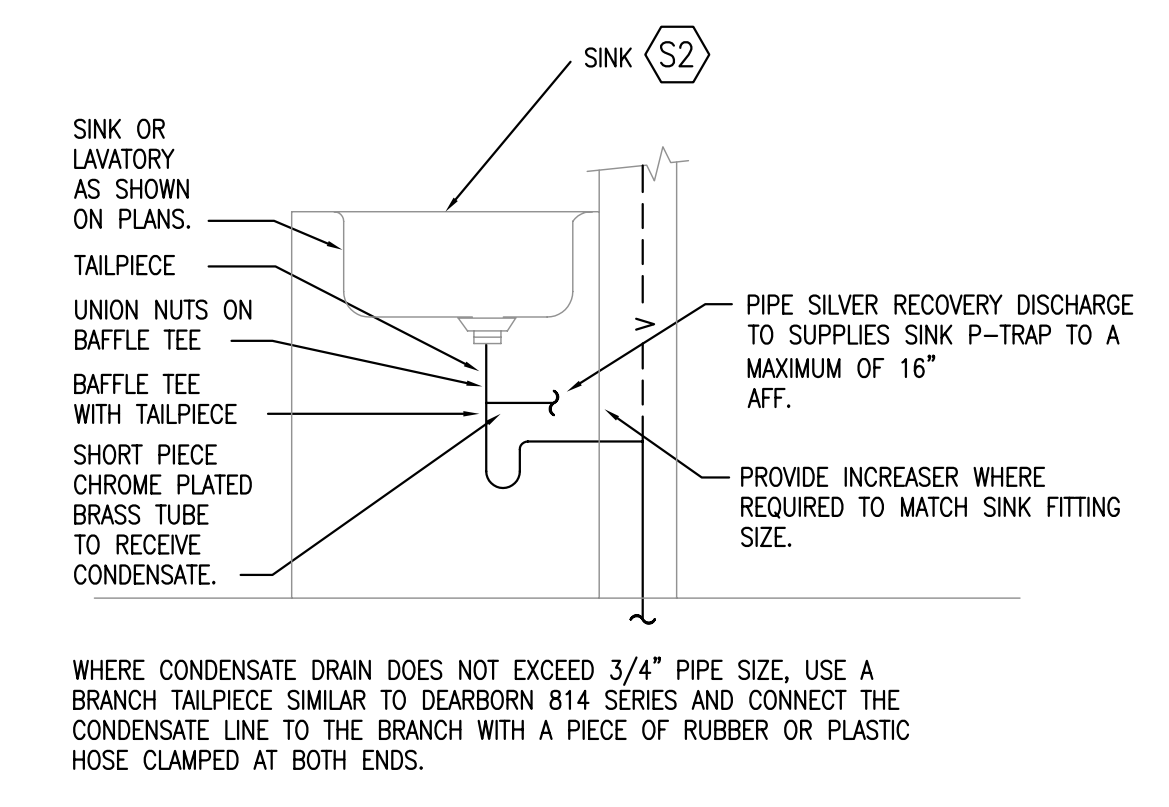
Drawn: RDG
Checked: DEG
Approved: DEG

Project No. 0525/DDM 0696
Date: 10/27/06
Title: PLUMBING ISOMETRICS AND ENLARGED PLUMBING PLAN

Sheet No. P-201
Plumbing Sheet 3 of 4

GENERAL LAYOUT OF DRAIN STUB POSITIONS:
 - PROVIDE MINIMUM ONE DRAIN FOR EVERY TWO CASES.
 - DO NOT PLACE DRAIN WITHIN 18" L OR R OF CENTER OF CASE.
 - DO NOT PLACE DRAIN UNDER CASE END OR INSULATED PARTITION.

REFRIGERATION CONTRACTOR TO PROVIDE CONDENSATE PIPING TO HUB DRAIN.



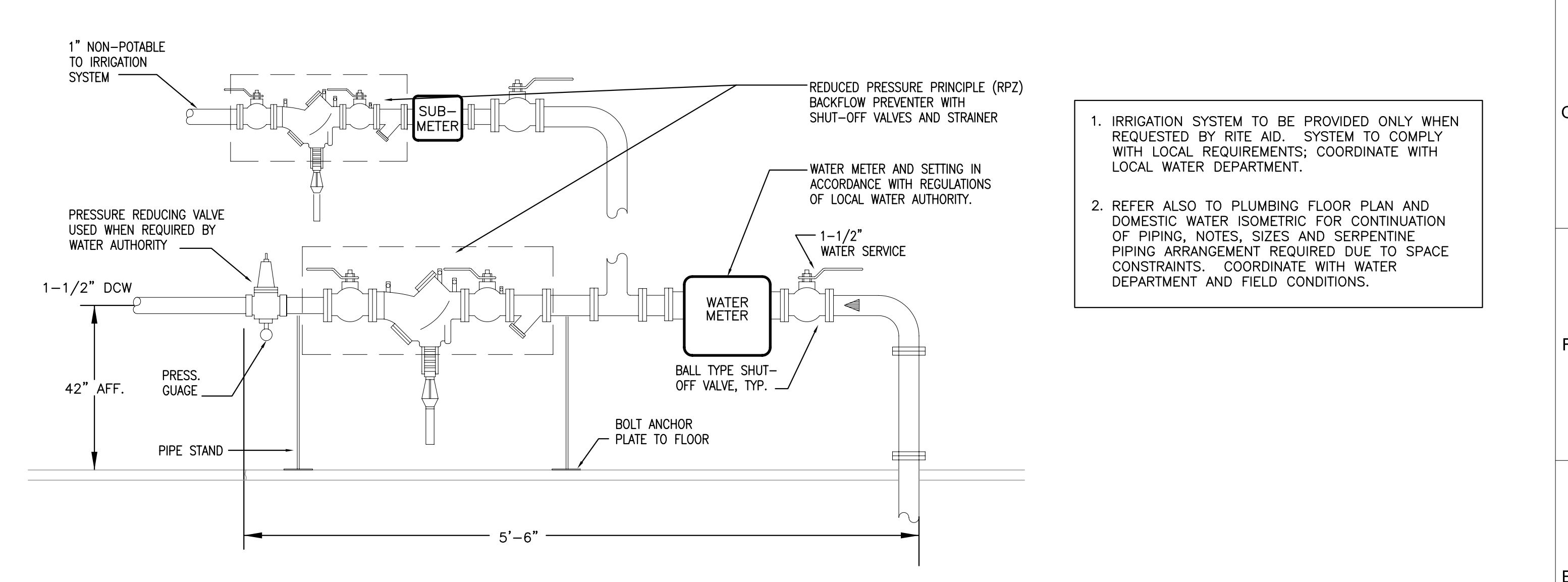
H1 SILVER RECOVERY DISCHARGE SINK DETAIL **H5 COOLER DRAINAGE DETAIL** **H9 GAS PIPING CONNECTION DETAIL** **H12 GAS SERVICE ENTRANCE DETAIL** **H15 HOSE BIBB**

FIXTURE	DESCRIPTION	CW	HW	SAN	VENT	MANUFACTURER	MODEL NUMBER	REMARKS
LAV	LAVATORY	1/2"	1/2"	1-1/2"	1-1/2"	AMERICAN STANDARD	REGALYN 4869.008	FAUCET - AMERICAN AMARILUS HERITAGE MODEL #6802.372V WRIST BLADE HANDLES. PROVIDE W/ CONCEALED ARM CARRIER TO SUIT (JOSAM EQUAL TO ZURN Z1231-A). GRID DRAIN/SUPPLIES/STOPS TO SUIT. UNDER SINK INSULATION (REFER TO SPEC SECTION 15080). CONFIRM ADA COMPLIANCE WITH ARCHITECT AND LOCAL CODES.
WC	WATER CLOSET	1/2"	-	4"	2"	AMERICAN STANDARD	CADET 2377.100	SEAT- SOLID PLASTIC BEIMS MODEL #9400C. SUPPLY/STOP TO SUIT. TRIP LEVER ON ACCESSIBLE SIDE OF W.C. COMPLY W/ADA AT APPLICABLE LOCATIONS; REFER TO ARCHITECTURALS. SUPPLY SEAT COVER DISPENSERS BOBROCK MODEL #B-221 FOR EACH WATER CLOSET; SUPPLIED AND INSTALLED BY G.C.
UR	URNAL	1"	-	2"	1-1/2"	AMERICAN STANDARD	ALLBROOK 6541.132	1"-5" TO RIM. PROVIDE WITH SLOAN "ROYAL" FLUSH VALVE AND WALL HANGER W/BLOCKING TO SUIT.
SS	SERVICE SINK (MSB)	1/2"	1/2"	3"	1-1/2"	FIAT	MSB-2424	W/ 830-AA SERVICE FAUCET W/ INTEGRAL VACUUM BREAKER. SUPPLIES/STOPS TO SUIT. HOSE AND HOSE BRACKET AND MOP HOLDER MODEL #88966 BY G.C.
PS	PHARMACY SINK	1/2"	-	1-1/2"	1-1/2"	DAYTON	D11721	FAUCET - ELKAY MODEL #LKE4122 SINGLE LEVER. STRAINER DRAIN/P-TRAP/ SUPPLIES/STOPS TO SUIT. SINK W/3 FAUCET HOLES; CONFIRM PRIOR TO ORDERING. SUPPLIED AND INSTALLED BY G.C.
S1	LOUNGE SINK	1/2"	1/2"	1-1/2"	1-1/4"	DAYTON	D11721	FAUCET - ELKAY #LX-2432BH 8" O.C., 8" SWING SPOUT, 2.5 GPM AERATOR, #LX-35L BASKET STRAINER. P-TRAP/SUPPLIES/STOPS TO SUIT. SINK W/3 FAUCET HOLES/CONFIRM PRIOR TO ORDERING.
WF	WATER COOLER	1/2"	-	1-1/2"	1-1/4"	VERTEX	PWC1010F	PURE WATER COOLER W/#C4160 CUP HOLDER SUPPLIED AND INSTALLED BY G.C. SHALL PROVIDE 1/2" DCW CONNECTION. DRAIN NOT REQUIRED FOR UNIT, BUT PROVIDE WALL DRAIN 22" AFF WITH ZURN Z1441 WALL CLEANOUT ACCESS COVER FOR FUTURE USE.
EWG	ELEC. WATER COOLER	1/2"	-	1-1/2"	1-1/4"	ELKAY	ELKAY #E25-8	*WALL-MOUNT, BARRIER-ACCESS-FREE, SELF-CLOSING-EASY-TOUCH-CONTROLS. N/A THIS STORE (WF USED IN LIEU OF EWG)
FD	FLOOR DRAIN	-	-	2"	-	JOSAM	SERIES 30000 A	ADJUSTABLE NIKALDY STRAINER. (-50) 1/2-INCH TRAP PRIMER TAP.
HB	WALL HYDRANT	3/4"	-	-	-	WOODFORD	#65 - 3/4"	FROST PROOF, CHROME FINISH, BACKFLOW PROTECTED W/ INTEGRAL ANTI-SIPHON VACUUM BREAKER. LOOSE KEY STOP. (NOTE: RITE AID CRITERIA MODEL #70 IS NOT ACCEPTABLE BECAUSE IT PROVIDES NO ANTI-SIPHON PROTECTION.)
TP	TRAP PRIMER	1/2"	-	-	-	PRECISION PLUMBING PRODUCTS	#P2-500	CAST BRONZE, ANTI-SIPHON (INTEGRAL VACUUM BREAKER), W/DISTRIBUTION UNIT TO SUIT. TP SERVING EACH TOILET ROOM FLOOR DRAIN; ONE TP SERVES F.S. AT WATER ENTRANCE AREA.
S2	SUPPLIES SINK	1/2"	1/2"	1 1/2"	1 1/2"	ADVANCED TABCO	DI-1-2012	SUPPLIED WITH ADVANCED TABCO FAUCET MODEL K-50. P-TRAP/SUPPLIES/STOPS TO SUIT. SEE SILVER RECOVERY DISCHARGE SINK DETAIL H1/P-202.
RD1	ROOF DRAIN	-	-	-	-	JOSAM	21500-3-22	DECK CLAMP ASSEMBLY AND DRAIN RECEIVER, CAST IRON DOME.
RD2	OVERFLOW ROOF DRAIN	-	-	-	-	JOSAM	21500-3-22	OVERFLOW DRAIN. DECK CLAMP ASSEMBLY AND DRAIN RECEIVER, CAST IRON DOME.
FS	FLOOR SINK	-	-	-	-	JAY R. SMITH	3140	8" DEEP, 1/2 GRATE, DEEP SEAL P-TRAP.
FOO	FLOOR CLEANOUT	-	-	-	-	JAY R. SMITH	4020	FINISH FLOOR CLEANOUT WITH ADJUSTABLE NICKEL BRONZE TOP (OR TOP VARIATIONS TO SUIT FLOOR FINISH PER ARCHITECTURAL REQUIREMENTS).
WOO	WALL CLEANOUT	-	-	-	-	JAY R. SMITH	4472-U	VANDALPROOF SCREWS. STAINLESS STEEL COVER.
SA	SHOCK ABSORBER	1/2"	-	-	-	SIOUX CHIEF	"HYDRA-RESTER" #652-A	PDI SIZE "A". LOCATED AT FLUSH VALVE URINAL LOCATION AND AS OTHERWISE REQUIRED TO CONTROL WATER HAMMER.

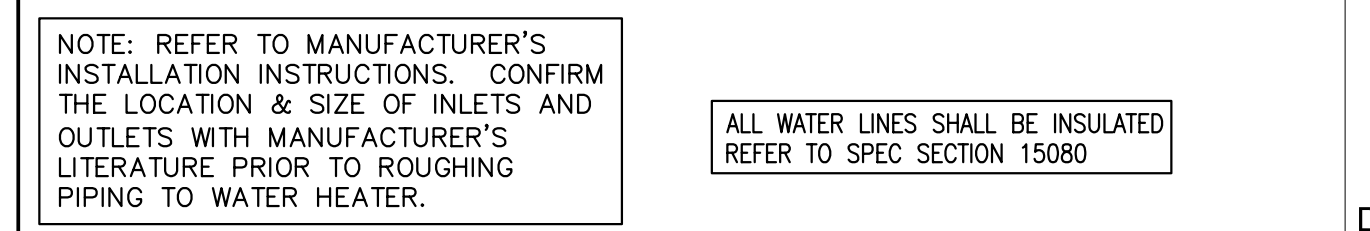
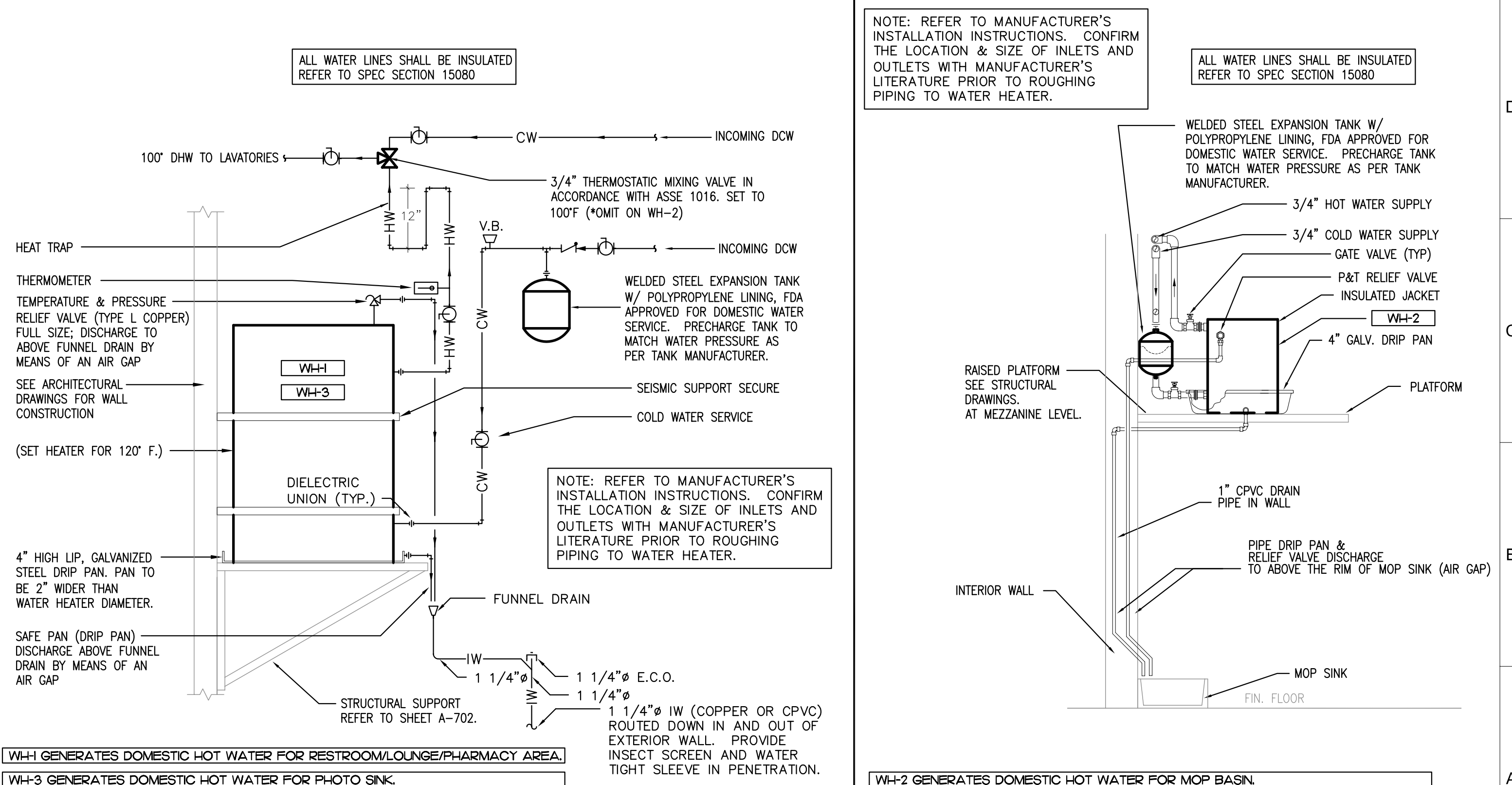
C1 PLUMBING FIXTURE SCHEDULE *FIXTURE SUBSTITUTIONS ARE NOT ALLOWED*

FIXTURE	SYSTEM SERVED	INPUT WATTS	TANK SIZE	TEMP		RELIEF VALVE PSIG	VOLTS	PHASE	HZ	MANUFACTURER	MODEL NUMBER	REMARKS
				ENT	LVG							
WH-1	RR'S/LOUNGE/PHARMACY	1500	12 GAL	55	120	125	120	1	60	BRADFORD-WHITE	M-1-12UT6S	PROVIDE TAP RELIEF VALVE, VACUUM BREAKER, DIELECTRIC UNIONS, FITTINGS/VALVES/GAUGES TO SUIT, THERMAL EXPANSION TANK, AMTROL "THERM-X-TROL" S1-5, 2-GAL. TANK VOLUME. LOCATED ON MEZZANINE WALL ABOVE RESTROOM CEILING. REFER ALSO TO DETAIL A10 ON SHEET P-202.
WH-2	SERVICE SINK	1500	12 GAL	55	120	125	120	1	60	BRADFORD-WHITE	M-1-12UT6S	PROVIDE TAP RELIEF VALVE, VACUUM BREAKER, DIELECTRIC UNIONS, FITTINGS/VALVES/GAUGES TO SUIT, THERMAL EXPANSION TANK, AMTROL "THERM-X-TROL" S1-5, 2-GAL. TANK VOLUME. LOCATED ON WALL ABOVE JANITOR'S SINK. REFER ALSO TO DETAIL A14/P-202.
WH-3	SUPPLIES	1500	12 GAL	55	120	125	120	1	60	BRADFORD-WHITE	M-1-12UT6S	PROVIDE TAP RELIEF VALVE, VACUUM BREAKER, DIELECTRIC UNIONS, FITTINGS/VALVES/GAUGES TO SUIT, THERMAL EXPANSION TANK, AMTROL "THERM-X-TROL" S1-5, 2-GAL. TANK VOLUME. LOCATED ABOVE CEILING AT PHOTO SINK. REFER ALSO TO DETAIL A10 ON SHEET P-202.

A1 ELECTRIC WATER HEATER SCHEDULE *FIXTURE SUBSTITUTIONS ARE NOT ALLOWED*



E10 WATER SERVICE ENTRANCE DETAIL



A10 WATER HEATER DETAIL FOR WH-1, WH-3 **A14 WATER HEATER DETAIL FOR WH-2**