

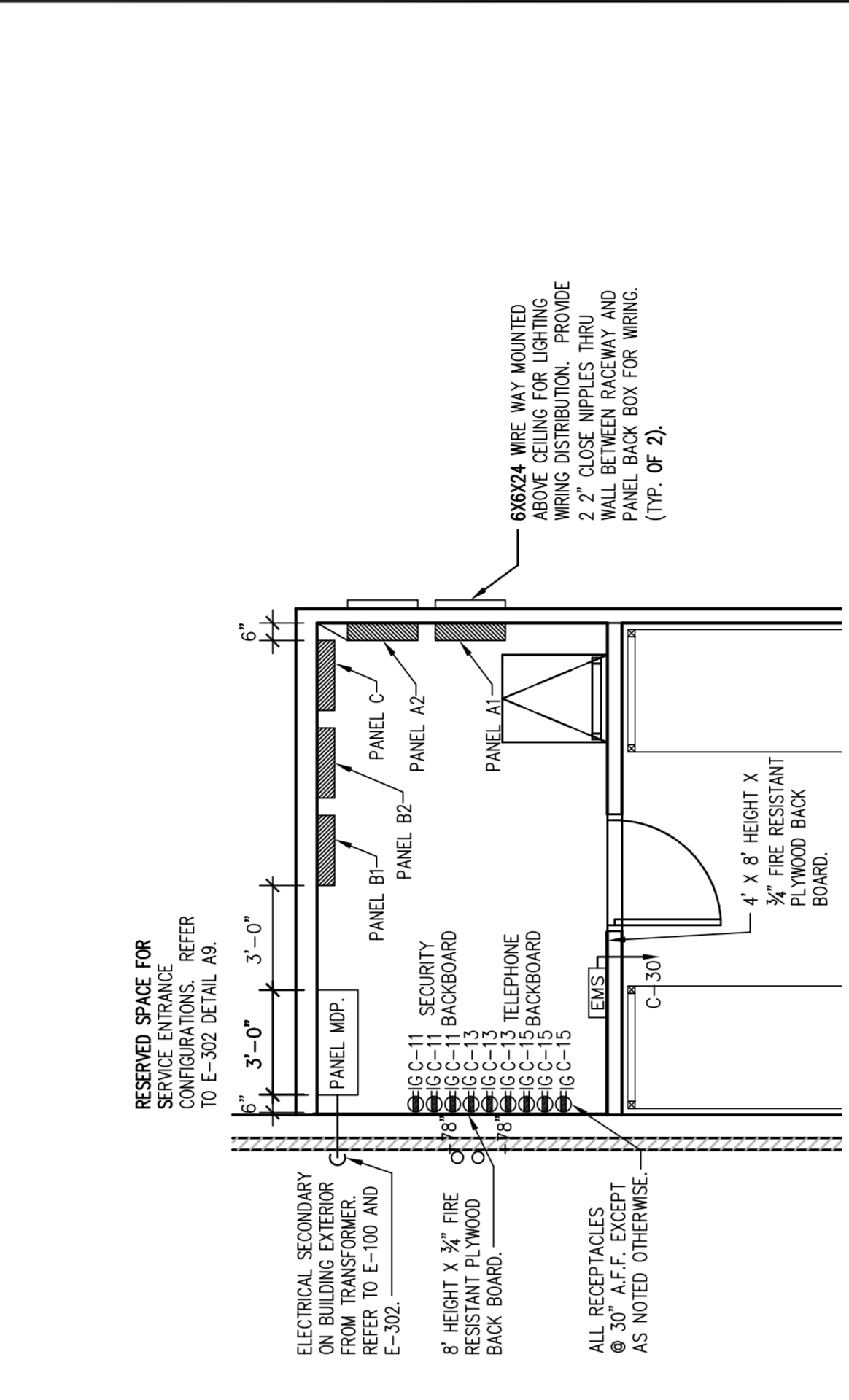


SHEET NOTES

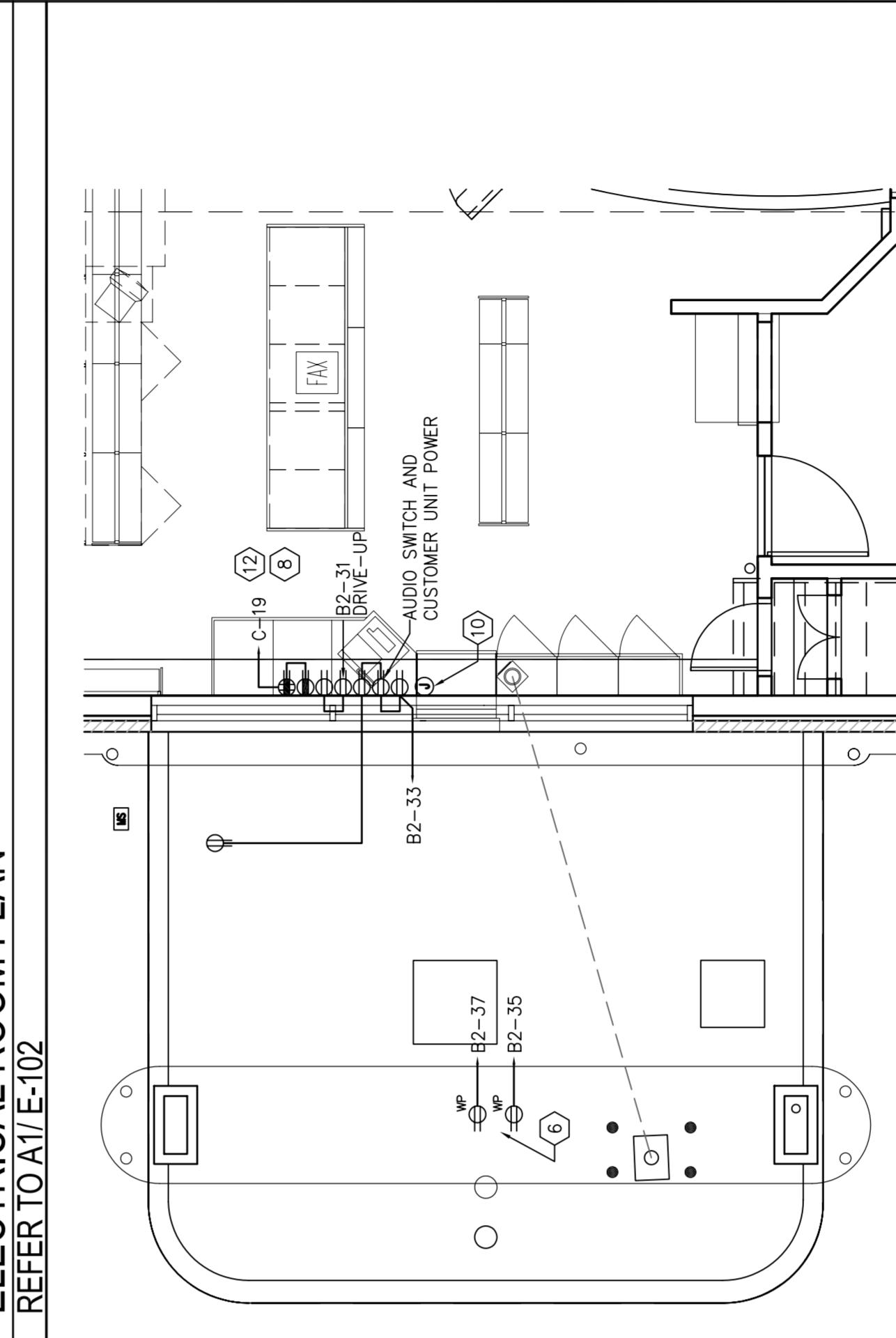
- 1. (3) SINGLE GANG J-BOXES AT 54" AFF - (1) FOR CU-1/AC-1 T-STAT. (1) FOR REFRIGERATION ALARM AND (1) LIGHTING CONTROL. (1) FOR DATA/RS-485 AND 1 BOX FOR CATS. SEE DETAIL D5 ON E-201.
- 2. DOUBLE GANG J-BOXES WITH 1 1/2" CONDUIT EACH. 1 BOX FOR DATA/RS-485, AND 1 BOX FOR CATS. SEE DETAIL D5 ON E-201.
- 3. DOUBLE GANG J-BOX WITH 1 1/2" CONDUITBOX FOR TV MONITOR OUTLET. SEE DETAIL D5 ON E-201.
- 4. SINGLE GANG J-BOX AT 54" AFF FOR SECURITY WITH 3/4" CONDUIT. SEE DETAIL D-5, SHEET E-201 FOR DETAILS.
- 5. SINGLE GANG J-BOX AT 10" AFF FOR WORK AND STROBE. PROVIDE (2) DUPLEX RECEPTACLE IN DRIVE-THRU CANOPY FOR BLOWERS. COORDINATE EXACT LOCATION WITH ARCHITECTURAL DRAWINGS AND BLOWER VENDOR DRAWINGS.
- 7. NOT USED.
- 8. SEE DETAIL A-9 ON DRAWING E-201 FOR CONTROL WIRING DIAGRAM FOR DRIVE THRU AND SEE A7 ON A-603 FOR LOCATIONS.
- 9. DOUBLE GANG J-BOXES WITH 1 1/2" CONDUIT EACH. 2 BOXES FOR TV-SAT. SEE DETAIL D5 ON E-201.
- 10. 4XX J-BOX AT 24" AFF ON CENTER WITH (2) 1 1/2" CONDUITS.
- 11. SINGLE GANG J.B. 8" AFF TO ABOVE CEILING FOR TEMPERATURE SENSOR FOR CU-1/AC-1. J.B. TO BE 1" ABOVE CEILING AND IN ROOM WITH OTHER OFFICE ROOMS. MONITOR UNIT.
- 12. THE DEBRIS UNIT REQUIRES THREE (3) OUTLET DUPLEX OUTLETS FOR POWER AND ONE 4XX J-BOX WITH CONDUIT FOR LOW VOLTAGE WIRING. THE CONDUITS WILL BE RUN BENEATH THE WINDOW TO THE DEBRIS UNIT. THE DEBRIS UNIT WILL BE INSTALLED IN CANOPY AT THE AREA OF THE ACCESS PANEL. SEE DEBRID SPECIFICATIONS FOR EXACT LOCATIONS.

K10 LIGHTING PLAN - GONDOLAS
REFER TO A31/E-101 & A31/E-102

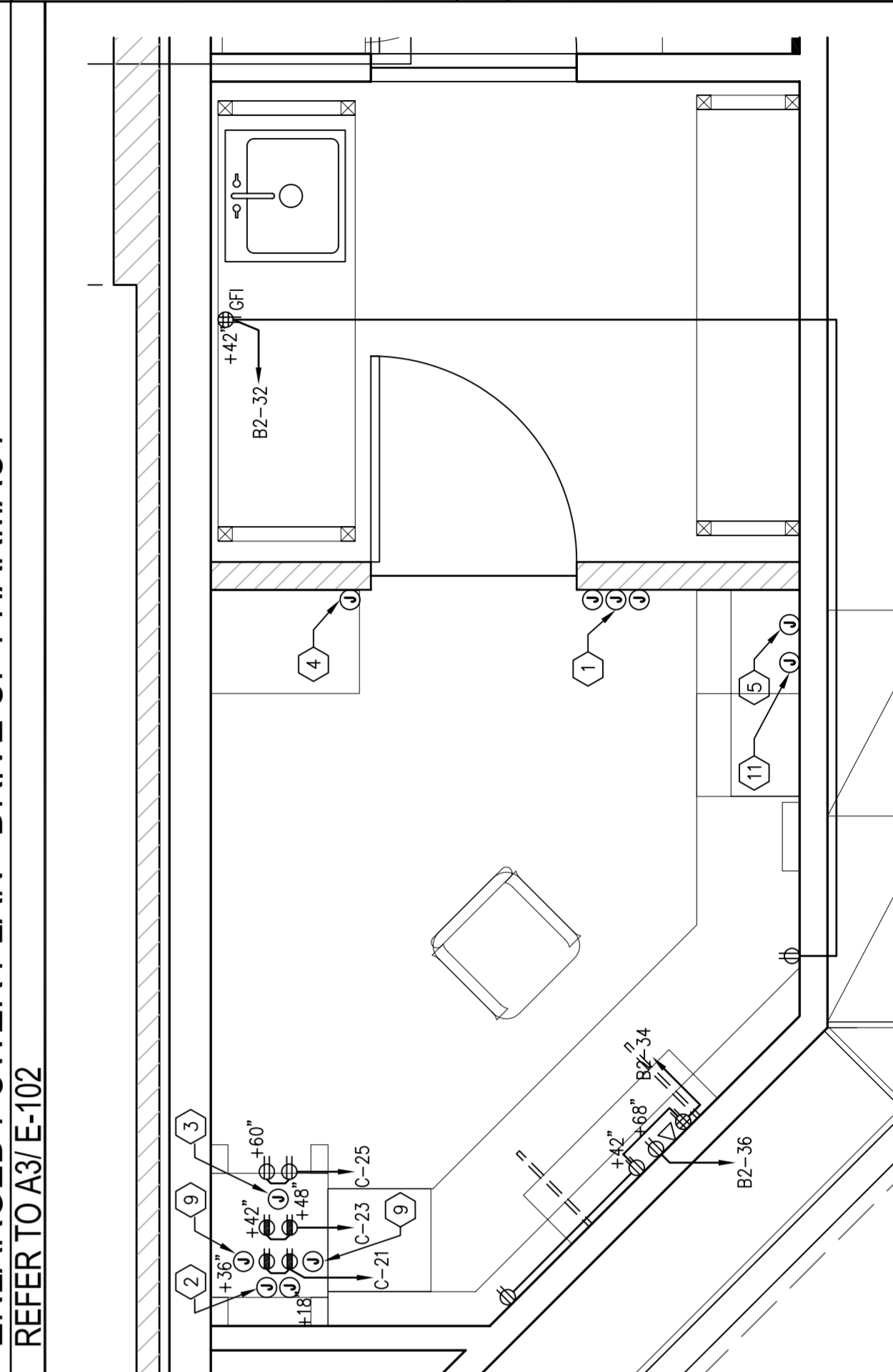
DO NOT INSTALL LENS ON THE TYPE "H" FIXTURE (TYP.)
NOTE: FIXTURES ARE MOUNTED ON TOP OF GONDOLAS AND FED FROM UNDER FLOOR CONDUIT. CIRCUIT AS LABELED.



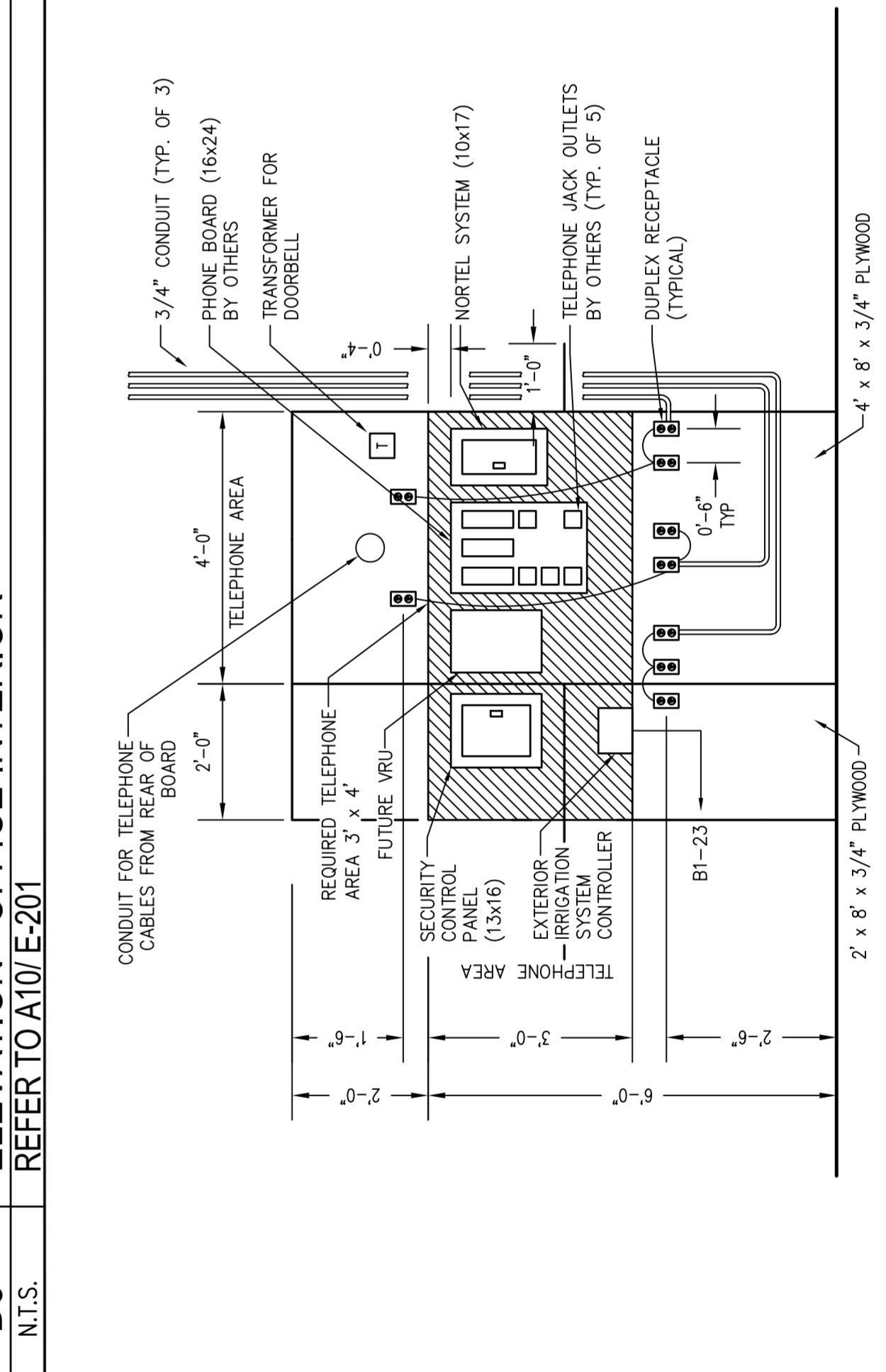
G10 ELECTRICAL ROOM PLAN
REFER TO A11/E-102



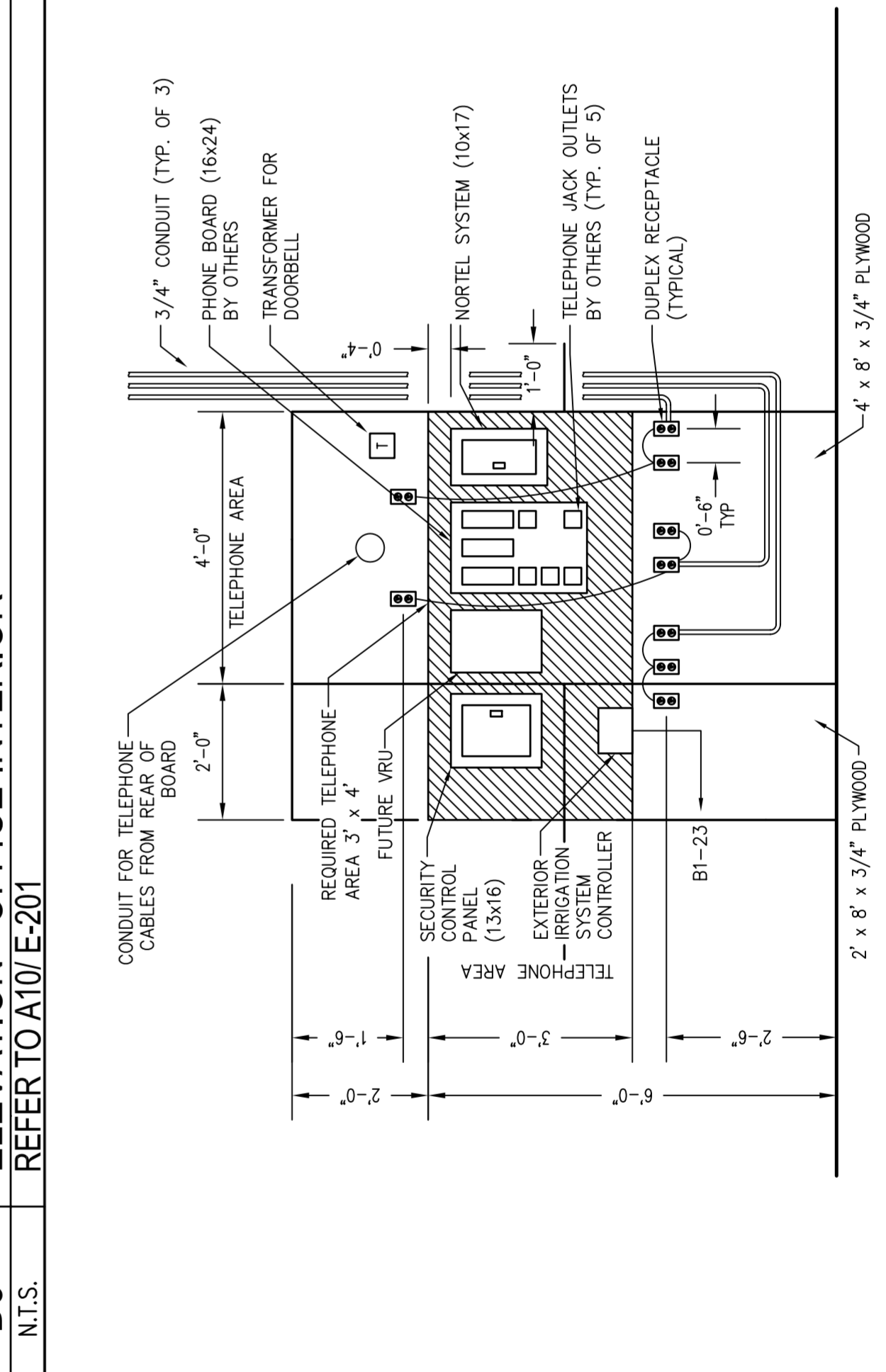
D10 ENLARGED POWER PLAN - DRIVE UP PHARMACY
REFER TO A31/E-102



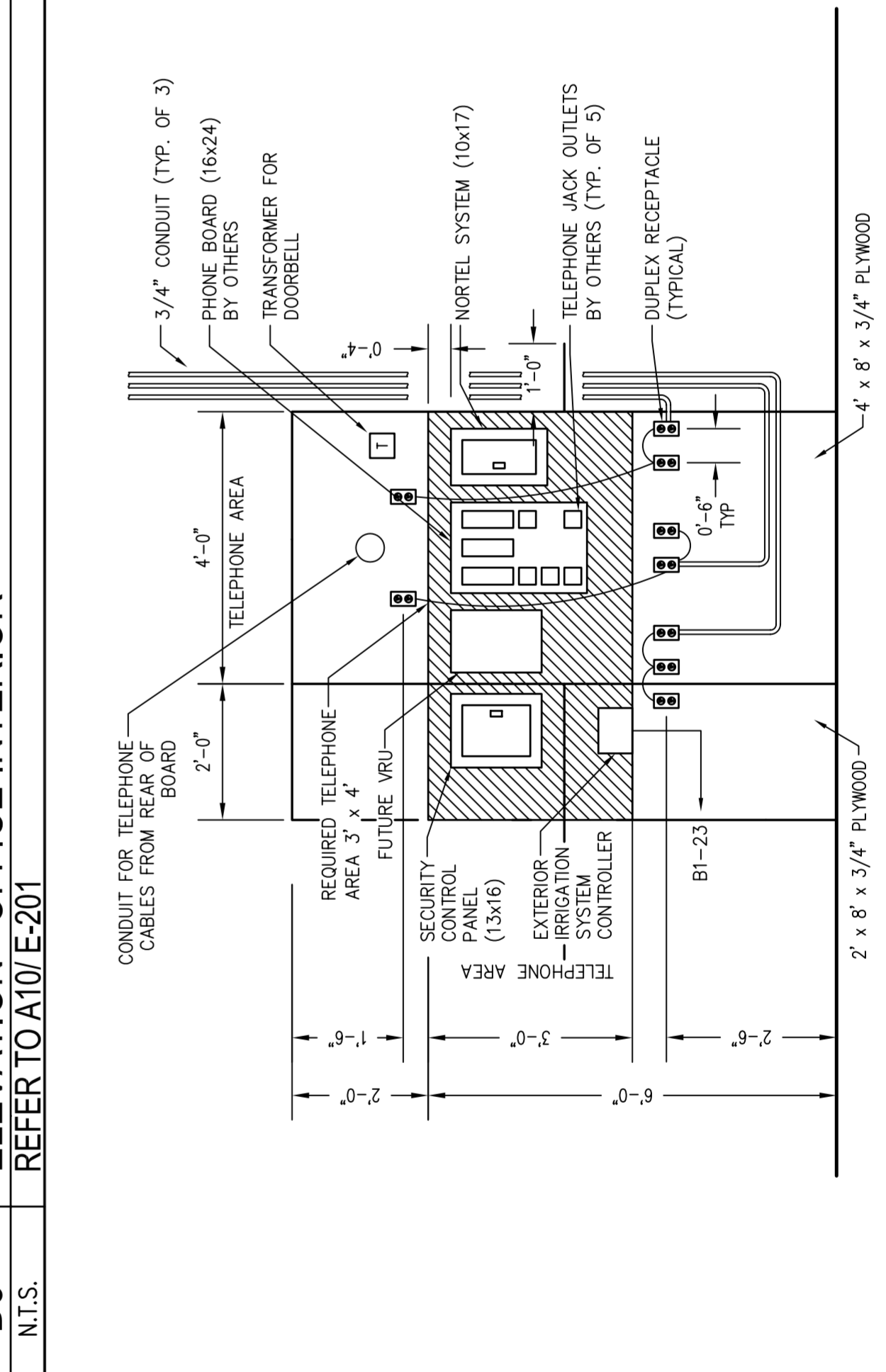
D5 ELEVATION - OFFICE INTERIOR
REFER TO A101/E-201



A5 ELEVATION - TELEPHONE SECURITY BACKBOARD
REFER TO G101/E-201



G5 ELEVATION - OFFICE INTERIOR
REFER TO A101/E-201



M 16 15 14 13 12 11 10 9 8 7 6 5 4 3 2 1

A 16 15 14 13 12 11 10 9 8 7 6 5 4 3 2 1

- GENERAL NOTES
- 1. UNLESS OTHERWISE NOTED, ALL RECEPTABLES ARE MOUNTED AT 20" AFF.
 - 2. UNLESS OTHERWISE NOTED, ALL MOUNTING UNITS LISTED ARE TO THE CENTER OF THE WALL BOX OR DEVICE.
 - 3. OUTLETS AND JUNCTION BOXES IN FINISHED SPACES AND CEILING ARE HESSED UNLESS OTHERWISE NOTED.
- LEGEND
- DUPLEX RECEPTACLE - MOUNT AT 20" A.F.F. UNLESS OTHERWISE NOTED
 - DUPLEX RECEPTACLE - WEATHER PROOF
 - DUPLEX RECEPTACLE - GROUND FAULT INTERRUPTER
 - QUAD RECEPTACLE - ISOLATED GROUND
 - DUPLEX RECEPTACLE - ISOLATED GROUND
 - QUAD RECEPTACLE - MOUNT AT 20" UNLESS OTHERWISE NOTED
 - JUNCTION BOX
 - HOMERUN TO PANELEBOARD
 - UNDERGROUND CONDUIT
 - ABOVE GROUND CONDUIT