

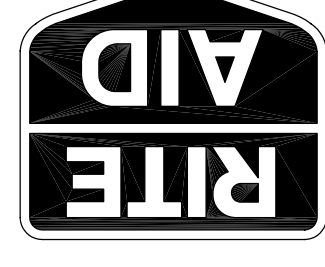


BRUCE
ROMANNE
HAMILTON
ARCHITECTS

ARCHITECTS
LAND PLANNING
INTERIOR DESIGN
TO VISUALIZATION

100 STATE STREET
NEW HAMPSHIRE 03801

RITE AID STORE #4122
WASHINGTON & ALLEN AVENUE
PORTLAND, MAINE



ISSUED FOR BUILDING PERMIT/CC BIDDING
10-27-06

REVISIONS

Drawn: [Name]
Checked: [Name]
Approved: [Name]

Project No. 0525
Date: 10-27-06

Title:
**ELECTRICAL
COMMUNICATIONS
AND FIRE ALARM
PLAN**

Sheet No. E-103

SHEET NOTES

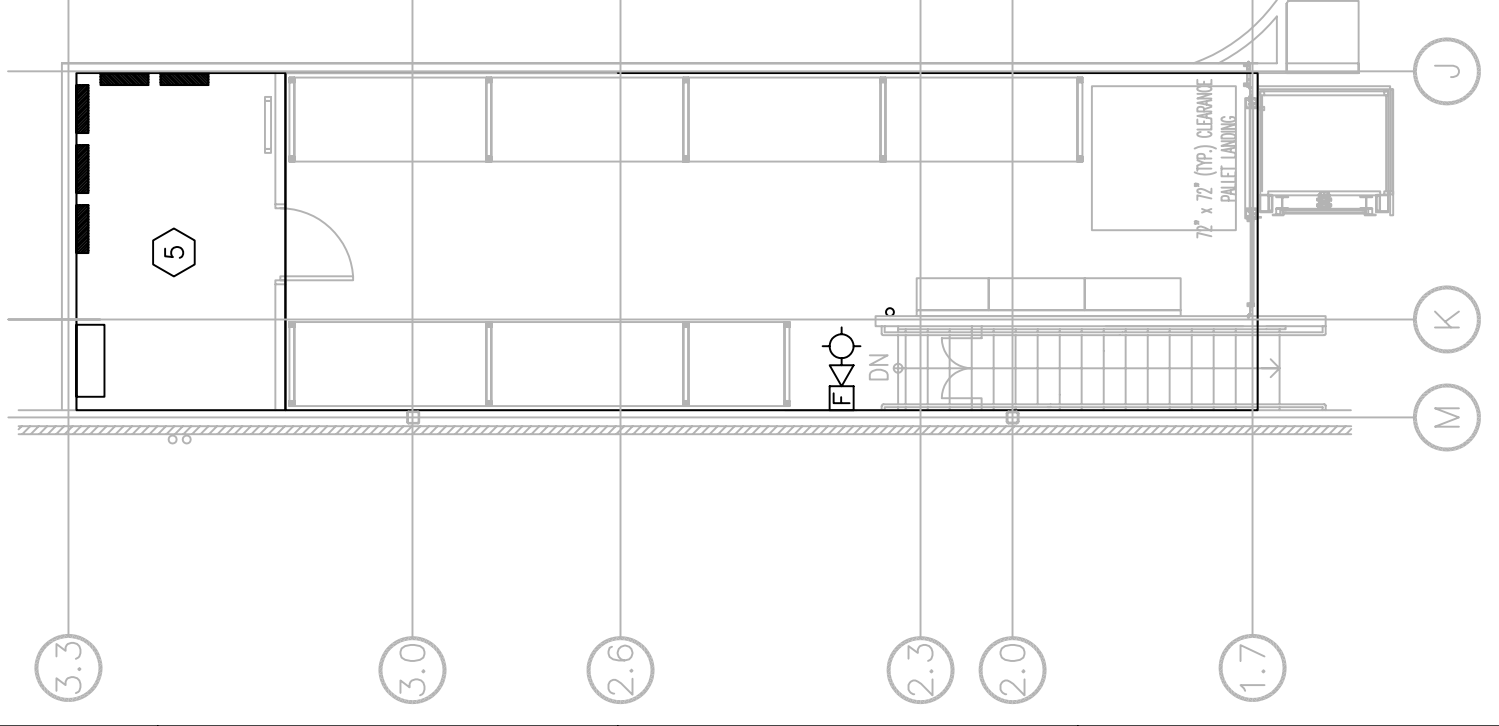
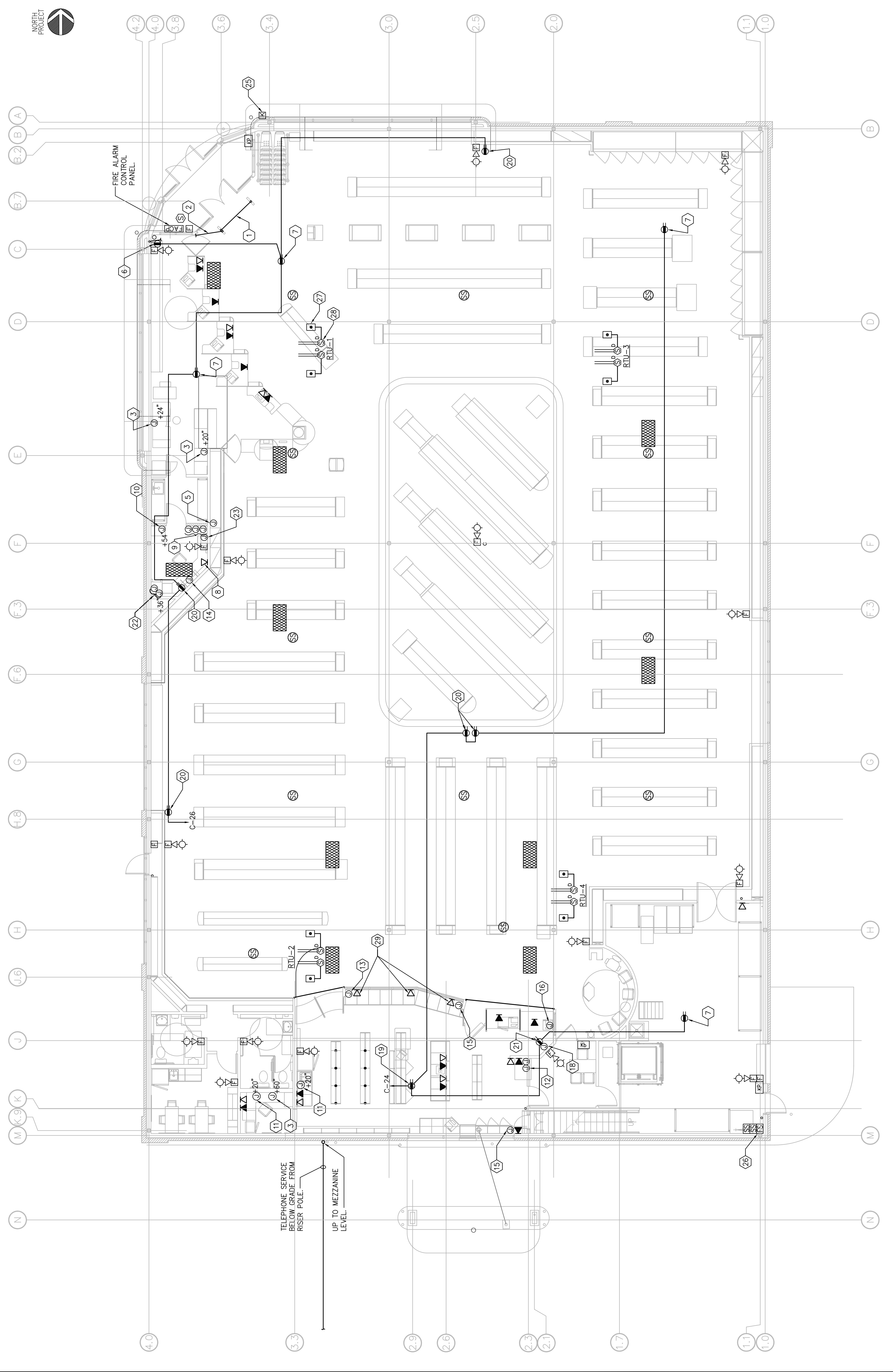
- CONDUIT AND STUB-UP FOR THE SECURITY REESTALS. SEE SHEET NOTE #4 ON E-102 FOR MORE INFORMATION.
- 3/4" CONDUIT FROM STUB-UP FOR THE SECURITY REESTALS. RUN TO JUNCTION BOX LOCATED 12" ABOVE THE FINISHED CEILING AS SHOWN. SEE SHEET NOTE #25 ON E-102 FOR THE POWER REQUIREMENTS.
- SINGLE GANG J.B. AFF W/ 3/4" TO ABOVE CEILING.
- LAMP/ON BOX (SEE AS REQUIRED) MOUNTED 60" AFF WITH AN 1 1/2" BUT TO 1'-0" ABOVE FINISHED CEILING FOR Y-SAT (WIRED) CABLE.
- SINGLE GANG J.B. 10" AFF.
- SECURITY DUPLEX RECEPTACLE FOR CHECKPOINT SYSTEM WITH JUNCTION BOX 12" ABOVE FINISHED CEILING.
- SECURITY J-BOX WITH DUPLEX OUTLET 12" ABOVE FINISHED CEILING OR STRUCTURE.
- FAX MACHINE OUTLET LOCATED BELOW COUNTER.
- (3) SINGLE GANG J-BOXES AT 54" AFF - (1) FOR REGENERATION ALARM AND (2) FOR VOLUME CONTROL AND (1) FOR VOLUME CONTROL. SEE ELEVATION G-3, SHEET E-201 FOR DETAILS.
- SINGLE GANG J.B. 54" AFF W/ 3/4" TO 12" AFC.
- SINGLE GANG J.B. 20" AFF W/ 3/4" TO 12" AFC.
- TRAY AND J-BOXES ONE 1/4" W/ TWO 3/4" CONDUITS FOR 120V POWER AND TWO 3/4" CONDUITS FOR COMMUNICATIONS CABLES. MUST BE LOCATED WITHIN BODY OF CABINET. SEE D-11 ON A-603.
- SINGLE GANG J.B. 24" AFF O.C. W/ 1-1/2" TO 12" AFC.
- SINGLE GANG J.B. 72" AFF W/ 1 1/2" TO 12" AFC.
- DOUBLE GANG J.B. 20" AFF O.C. W/ 2-1 1/2" TO 12" AFC.
- DOUBLE GANG J.B. 20" AFF O.C. W/ 2-1 1/2" TO 12" AFC. 30" BACK FROM EDGE OF WALL.
- NOT USED.
- SECURITY J-BOX WITH SOLID COVER 2'-6" AFF. LOCATED IN RECEPTION AREA. MUST BE MOUNTED 12" ABOVE THE FINISHED CEILING. INSTALL BLOCKING IN THE WALL FOR THE SECURITY MONITOR. CONDUIT TO BE RUN TO 6" ABOVE THE FINISHED CEILING. SEE D11 ON A-603.
- SECURITY J-BOX WITH QUAD OUTLET 12" ABOVE FINISHED CEILING.
- SECURITY J-BOX WITH DUPLEX OUTLET MOUNTED ON WALL 12" ABOVE FINISHED CEILING.
- RECEPTACLE SHALL BE MOUNTED 8'-0" AFF AND CENTERED ON THE ANGLED WALL. SEE D11 ON A-603.
- DOUBLE GANG J.B. AFF O.C. W/ 1 1/2" TO ABOVE CEILING.
- SINGLE GANG J.B. 8" AFF TO ABOVE CEILING FOR SECURITY MONITOR. CONDUIT TO BE RUN TO 6" ABOVE THE FINISHED CEILING. SEE D11 ON A-603.
- INSTALLATION OF FIRE ALARM SYSTEM TO CONFORM TO NFPA-72.
- INSTALL RECESSED KNIX BOX.
- WIRE FLOW AND SUPERVISORY SWITCH FURNISHED AND INSTALLED BY CONTRACTOR. SEE EACH EQUIPMENT QUANTITIES WITH FIRE PROTECTION SHOP DRAWINGS.
- NOTE: REMOVE TEST ALARM STATIONS ON CEILING BELOW UNIT. SEE NOTE 7 ON E-303 DETAIL A0.
- DUCT MOUNTED SMOKE DETECTORS PROVIDED BY ELECTRICAL CONTRACTOR AND INSTALLED BY MECHANICAL CONTRACTOR.
- VERIFY HEIGHT OF TELEPHONE RECEPTACLE WITH RITE AID PROJECT MANAGER.

GENERAL NOTES

- THE ALARM SYSTEM SHALL BE PROVIDED BY RITE AID. THE CONTRACTOR SHALL PROVIDE RACEWAYS, BACK FEEDS AND PULL LINES.
- SECURITY, MUSIC AND TELEPHONE SYSTEM SHALL BE PROVIDED BY RITE AID. THE CONTRACTOR SHALL PROVIDE ALL RECEPTABLES, CONDUIT AND PULL LINES.
- ALL TELEPHONE, DATA, COAX AND OTHER LOW VOLTAGE WIRING SHALL BE SUPPORTED WITH HANGERS ATTACHED TO ROOF STRUCTURE.

LEGEND

- QUAD RECEPTACLE - ISOLATED GROUND
- DUPLEX RECEPTACLE - ISOLATED GROUND
- JUNCTION BOX
- DATA RECEPTACLE
- TELEPHONE RECEPTACLE
- KEY PAD
- SECURITY CEILING PANEL. PROVIDED BY RITE AID
- SECURITY VENDOR INSTALLED BY CONTRACTOR.
- SOUND SYSTEM
- HORN STROBE COMBINATION
- FIRE ALARM PULL STATION
- DUCT MOUNTED SMOKE DETECTOR
- REMOTE TEST/ALARM STATION
- FIRE ALARM CONTROL PANEL
- KNIX BOX
- SMOKE DETECTOR
- FLOW SWITCH
- SUPERVISORY SWITCH
- AFC ABOVE FINISHED CEILING



A1 ELECTRICAL PLAN A3 ELECTRICAL EQUIPMENT PLAN
1/8" = 1'-0" MEZZANINE 1/8" = 1'-0"