



BRUCE
ROMANNE
HAMILTON
ARCHITECTS

100 WASHINGTON AVENUE
PORTLAND, MAINE 04101
TEL: 603.771.1100
WWW.BRUCEROMANNE.COM

RITE AID STORE #4122
WASHINGTON & ALLEN AVENUE
PORTLAND, MAINE



ISSUED FOR BUILDING PERMIT/CO. REVISIONS
10-27-06

Drawn: [Name]
Checked: [Name]
Approved: [Name]
Project No.: 0525
Date: 10-27-06
Title: POWER PLAN
Sheet No.: E-102

E-102

SHEET NOTES

1. PLUG MOLD PROVIDED BY RITE-AID, INSTALLED ON TOP OF GONDOLA BY CONTRACTOR. UP POWER CONDUIT INTO RECEIVING AREA MOUNTED AT BOTTOM OF GONDOLA. REFER TO RITE-AD DRAWINGS FOR DETAILS.
2. PROVIDE (1) 3/4" IN SLAB FROM WALL TO STUB-UP INTO FUTURE. PLANS PRIOR TO INSTALLING UNDER SLAB CONDUIT. STUB UP THROUGH WALL TO ABOVE ACCESSIBLE CEILING SPACE. SEE DETAIL R10 ON E-501.
3. WEATHERPROOF RECEPTACLE MOUNTED IN KICK PLATE OF GONDOLA. WEATHERPROOF BOX MOUNTED ABOVE CEILING. SEE DETAIL E5, SHEET E-301.
4. PROVIDE (2) 3/4" C. FOR POWER ONE FOR LOW VOLTAGE IN SLAB FROM WALL TO STUB-UP INTO FUTURE. VERIFY LOCATION OF STUB-UP WITH ARCHITECTURAL AND FUTURE PLANS PRIOR TO INSTALLING UNDER SLAB CONDUIT. STUB UP THROUGH WALL TO ABOVE ACCESSIBLE CEILING SPACE.
5. PROVIDE (2) 3/4" C. UNDERSLAB. STUB-UP INTO PHOTOGRAPHY FIXTURES.
6. PROVIDE (2) 1 1/2" C. UNDERSLAB. STUB-UP INTO P.O.S. FIXTURES.
7. JUNCTION BOX FOR SECURITY KEY PAD MOUNT 48" AFF AND 12" FROM THE DOOR FRAME.
8. JUNCTION BOXES LOCATED ABOVE SLIDING DOOR FRAME FOR POWER CONNECTION. COORDINATE WITH SLIDING DOOR MANUFACTURER.
9. ELECTRICAL SECONDARIES BELOW GRADE FROM TRANSFORMER. REFER TO DWG. E-100 AND E-302 FOR ADDITIONAL INFORMATION.
10. WATER HEATER WH-1 TO BE LOCATED ON MEZZANINE WALL ABOVE ACCESSIBLE CEILING. COORDINATE EXACT LOCATION WITH PLUMBING DRAWINGS.
11. WATER HEATER WH-2 TO BE LOCATED ON WALL ABOVE SINK IN RECEIVING AREA COORDINATE EXACT LOCATION WITH PLUMBING DRAWINGS.
12. PROVIDE (2) 3/4" IN SLAB FROM WALL TO FLOOR BOX. VERIFY LOCATION OF FLOOR BOX WITH ARCHITECTURAL DRAWINGS PRIOR TO INSTALLING UNDER SLAB CONDUIT. STUB UP THROUGH WALL TO ABOVE ACCESSIBLE CEILING SPACE FOR FUTURE MEDIA CENTER. PROVIDE FLOOR BOX.
13. DOORBELL PUSH BUTTON AND BELL UNIT REFER TO DETAIL E13 ON DWG. E301. COORDINATE LOCATION WITH ARCHITECTURAL DRAWINGS.
14. 3/4" CONDUIT STUBBED UP AT PEDESTAL LOCATIONS FOR SECURITY. FLUSH WITH FINISHED FLOOR. OFF CENTER OF LOCUS EACH AUTOMATIC ENTRANCE DOOR. FROM THE DOOR FRAME OF THE AUTOMATIC ENTRANCE DOOR.
15. WATER HEATER WH-3 TO BE LOCATED ABOVE ACCESSIBLE CEILING IN STORAGE ROOM COORDINATE EXACT LOCATIONS WITH PLUMBING DRAWINGS.
16. 444 J-B-BOX - LOCATE AT PHARMACY SECURITY GATE MOTOR - VERIFY EXACT LOCATION WITH SECURITY GATE VENDOR.
17. PROVIDE BACK BOX FOR SWITCHES FOR PHARMACY SECURITY GATE MOTOR - VERIFY EXACT LOCATION IN FIELD.
18. NOT USED.
19. PROVIDE DUPLEX RECEPTACLE FOR FREEZER UNIT IN ADJACENT CABINET.
20. TELEPHONE CONDUITS IN WALL UP TO MEZZANINE ELECTRIC ROOM. COORDINATE WITH WALL CONSTRUCTION. REFER TO ARCHITECTURAL DOCUMENTS.
21. 6 #14 TO ROOF TOP CONDENSER CONTROL PANEL FOR FREEZERS. 4 #14 TO ROOF TOP CONDENSER CONTROL PANEL FOR COOLERS.
22. PROVIDE JMW2 - 3/4" C. FOR 208V SINGLE PHASE DEFROST POWER FROM ROOF TOP CONDENSER.
23. PROVIDE TWO JUNCTION BOXES ABOVE CEILING ONE FOR POWER ONE FOR TELE/DATA FOR FUTURE RAPID SCRIPT MACHINE AND RECEIPTS.
24. TWO COMPARTMENT FLOOR BOX ONE FOR POWER ONE FOR TELE/DATA. SECURITY CHECKPOINT CONTROL MODULE. MOUNT RECEPTACLE AND MOUNT 12" ABOVE FINISHED CEILING.
25. POWER-BOX MOUNTED 14" AFF FOR 120V DOOR PANIC BAR AND 14" AFF FOR 120V DOOR PANIC BAR AND 14" AFF FOR 120V DOOR PANIC BAR. THIS IS FOR KEY SWITCH THAT CONTROLS THE DOOR PANIC BAR AND ALARM POWER IS RUN TO THE WALL MOUNTED 14" AFF ON THE SALES SIDE OF THE RECEIVING ROOM.
26. POWER-BOX MOUNTED 14" AFF FOR 120V DOOR PANIC BAR AND 14" AFF FOR 120V DOOR PANIC BAR. THIS IS FOR KEY SWITCH THAT CONTROLS THE DOOR PANIC BAR AND ALARM POWER IS RUN TO THE WALL MOUNTED 14" AFF ON THE SALES SIDE OF THE RECEIVING ROOM.
27. POWER-BOX MOUNTED 14" AFF FOR 120V DOOR PANIC BAR AND 14" AFF FOR 120V DOOR PANIC BAR. THIS IS FOR KEY SWITCH THAT CONTROLS THE DOOR PANIC BAR AND ALARM POWER IS RUN TO THE ALARM ROOM. MOUNT CONDUIT TO THE 244-BOX MOUNTED 48" AFF ON THE HINGED SIDE OF DOOR #01. THIS IS FOR KEY SWITCH THAT CONTROLS THE DOOR PANIC BAR AND ALARM POWER IS RUN TO THE ALARM ROOM. MOUNT CONDUIT TO ROOF TOP UNITS ABOVE DOOR #01.
28. SEE E-304 FOR ELECTRICAL CONNECTIONS TO ROOF TOP UNITS ABOVE RECEIVING ROOM CONDENSERS UNIT.

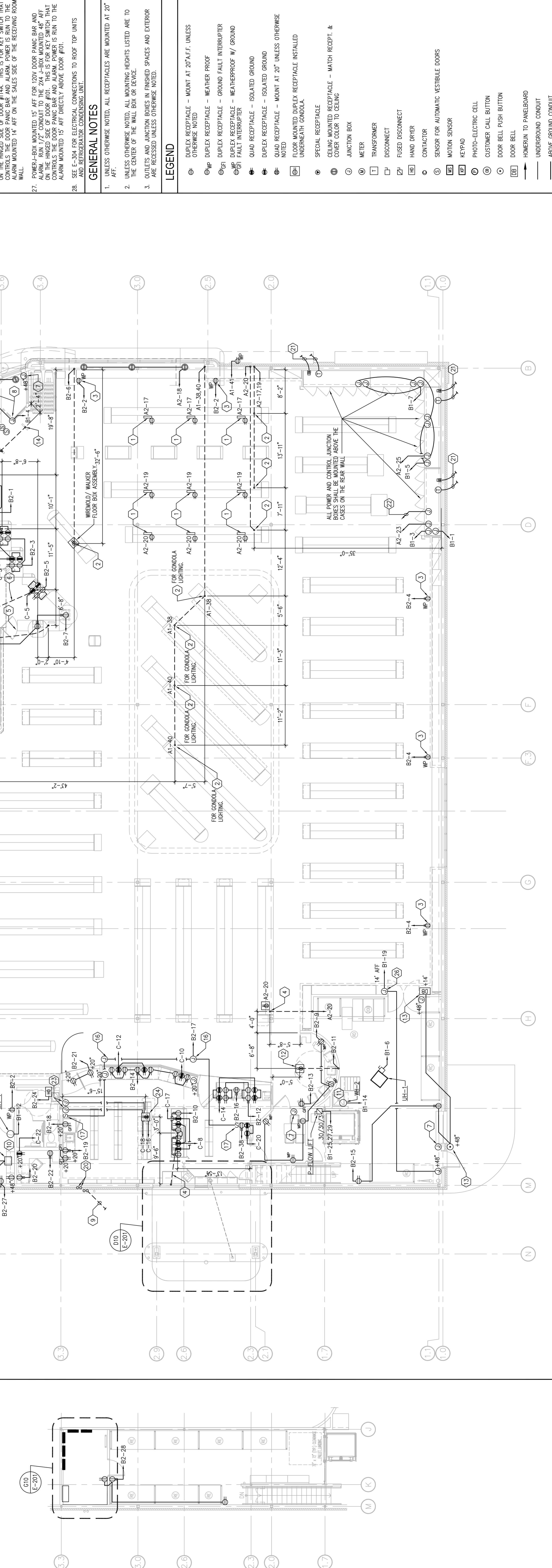
GENERAL NOTES

1. UNLESS OTHERWISE NOTED, ALL RECEPTACLES ARE MOUNTED AT 20" AFF.
2. UNLESS OTHERWISE NOTED, ALL MOUNTING HEIGHTS LISTED ARE TO THE CENTER OF THE WALL BOX OR DEVICE.
3. OUTLETS AND JUNCTION BOXES IN FINISHED SPACES AND EXTERIOR ARE RECESSED UNLESS OTHERWISE NOTED.

LEGEND

- ⊕ DUPLEX RECEPTACLE - MOUNT AT 20" AFF, UNLESS OTHERWISE NOTED
- ⊕ WP DUPLEX RECEPTACLE - WEATHER PROOF
- ⊕ FT DUPLEX RECEPTACLE - GROUND FAULT INTERRUPTER
- ⊕ FT DUPLEX RECEPTACLE - WEATHERPROOF W/ GROUND
- ⊕ FT FAULT INTERRUPTER
- ⊕ QUAD RECEPTACLE - ISOLATED GROUND
- ⊕ DUPLEX RECEPTACLE - MOUNT AT 20" UNLESS OTHERWISE NOTED
- ⊕ FLOOR MOUNTED DUPLEX RECEPTACLE INSTALLED UNDERNEATH GONDOLA.
- ⊕ SPECIAL RECEPTACLE
- ⊕ CEILING MOUNTED RECEPTACLE - MATCH RECEPT. & COVER COLOR TO CEILING
- ⊕ JUNCTION BOX
- ⊕ METER
- ⊕ TRANSFORMER
- ⊕ DISCONNECT
- ⊕ FUSED DISCONNECT
- ⊕ HAND OPER.
- ⊕ CONTACTOR
- ⊕ SENSOR FOR AUTOMATIC VESTIBULE DOORS
- ⊕ MOTION SENSOR
- ⊕ KEYPAD
- ⊕ PHOTO-ELECTRIC CELL
- ⊕ CUSTOMER CALL BUTTON
- ⊕ DOOR BELL PUSH BUTTON
- ⊕ DOOR BELL
- ⊕ HOMERUN TO PANELBOARD
- ⊕ UNDERGROUND CONDUIT
- ⊕ ABOVE GROUND CONDUIT
- ⊕ THERMOSTAT
- ⊕ REFRIGERANT SOLENOID VALVE

ALL POWER AND CONTROL JUNCTION BOXES MOUNTED ABOVE THE CEILING ON THE REAR WALL



POWER PLAN

A3 1/8" = 1'-0"
MEZZANINE

POWER PLAN
A3 1/8" = 1'-0"
MEZZANINE