

BRUCE  
RONAYNE  
HAMILTON  
ARCHITECTS  
100 WASHINGTON AVENUE  
PORTLAND, MAINE 04101  
TEL: 603.761.1100  
WWW.BRHAMONLINE.COM

WASHINGTON & ALLEN AVENUE  
PORTLAND, MAINE



ISSUED FOR BUILDING PERMITS/CD BIDDING  
10-27-06

Project No. 0525  
Date: 10-27-06  
Title:  
**LIGHTING PLAN**

Sheet No. **E-101**

**SHEET NOTES**

- PROVIDE TWO CIRCUITS FOR RITE AID LETTER SIGNAGE. COORDINATE WITH SIGNAGE VENDOR. CONTRACTOR TO PROVIDE SINGLE POLE FUSED DISCONNECT SWITCH FOR EACH LETTER.
- PROVIDE POWER FOR SIGNAGE. COORDINATE WITH SIGNAGE VENDOR.
- LIGHTS CONTROLLED BY OCCUPANCY SENSOR.
- NOT USED.
- JUNCTION BOX (12"x12"x6") ABOVE ACCESSIBLE CEILING. RUN 1 1/2" C IN WALL BELOW SLAB AND EXTEND TO SITE LIGHTING POLES AND/OR Pylon SIGNS.
- PROVIDE 3 #12, 1 #2 GND FOR ALL EMERGENCY LIGHTING. PROVIDE 1 1/2" C IN WALL BELOW SLAB AND EXTEND TO CIRCUIT BREAKER. FIRST POLE CONTAINS THE LOAD FOR THE LIGHTS FIXTURES. THE SECOND POLE IS USED TO SENSE LOSS OF POWER ON THE CIRCUIT.
- JUNCTION BOX (8"x8"x6") ABOVE ACCESSIBLE CEILING. RUN 1 1/2" C IN WALL BELOW SLAB AND EXTEND THROUGH TO DANK SITE LIGHTING POLE.
- JUNCTION BOXES (1"-POWER, -DATA) ABOVE ACCESSIBLE CEILING. PROVIDE 1 1/2" C IN WALL BELOW SLAB AND EXTEND TO DRAWING E-100.
- FOR COSMETIC LIGHTS SEE DETAIL #10 ON DWG. E-201.
- THIS EXIT SIGN IS TO BE PENDANT MOUNTED.
- JUNCTION BOX (12"x12"x16") IN RECEIVING ROOM CEILING AREA. RUN 1 1/2" C IN WALL, STUB BELOW SLAB AND EXTEND TO SITE LIGHTING POLE.

**GENERAL NOTES**

- TRACK LIGHTING TO LIGHT GRAPHICS SIGNAGE. VERIFY TRACK LIGHTING POSITION AND SPACING WITH GRAPHICS CONTRACTOR PRIOR TO INSTALLING TRACK LIGHTING. CONTRACTOR TO FIELD ADJUST TRACK HEADS AS NECESSARY TO LIGHT GRAPHICS SIGNAGE.

**LEGEND**

- 2'x4' FLUORESCENT LIGHT FIXTURE. LETTER (A) INDICATES FIXTURE TYPE.
- 2'x4' FLUORESCENT NIGHT LIGHT FIXTURE TO REMAIN ALWAYS ON. LETTER (A) INDICATES FIXTURE TYPE.
- 2'x4' EMERGENCY FLUORESCENT LIGHT FIXTURE. LETTER (AC) INDICATES FIXTURE TYPE.
- 1'x4' FLUORESCENT LIGHT FIXTURE. LETTER (B) INDICATES FIXTURE TYPE.
- 1'x4' EMERGENCY FLUORESCENT LIGHT FIXTURE. LETTER (BE) INDICATES FIXTURE TYPE.
- 1'x8' FLUORESCENT LIGHT FIXTURE. LETTER (C) INDICATES FIXTURE TYPE.
- 1'x8' EMERGENCY FLUORESCENT LIGHT FIXTURE. LETTER (CE) INDICATES FIXTURE TYPE.
- 6"x6" FLUORESCENT LIGHT FIXTURE. LETTER (D) INDICATES FIXTURE TYPE.
- 6"x6" FLUORESCENT LIGHT FIXTURE. LETTER (E) INDICATES FIXTURE TYPE.
- FLUORESCENT LIGHT FIXTURE. LETTER (F) INDICATES FIXTURE TYPE.
- TRACK LIGHTING FIXTURE. LETTER (G) INDICATES FIXTURE TYPE.
- DOWN LIGHT. LETTER (I) INDICATES FIXTURE TYPE.
- EXIT LIGHT.
- EXTERIOR LIGHT FIXTURE. LETTER (L) INDICATES FIXTURE TYPE.
- EXTERIOR LIGHT FIXTURE. LETTER (M) INDICATES FIXTURE TYPE.
- JUNCTION BOX.
- OCCUPANCY SENSOR.
- LIGHT SWITCH.
- CIRCUIT HOME RUN.
- CIRCUIT WIRING.

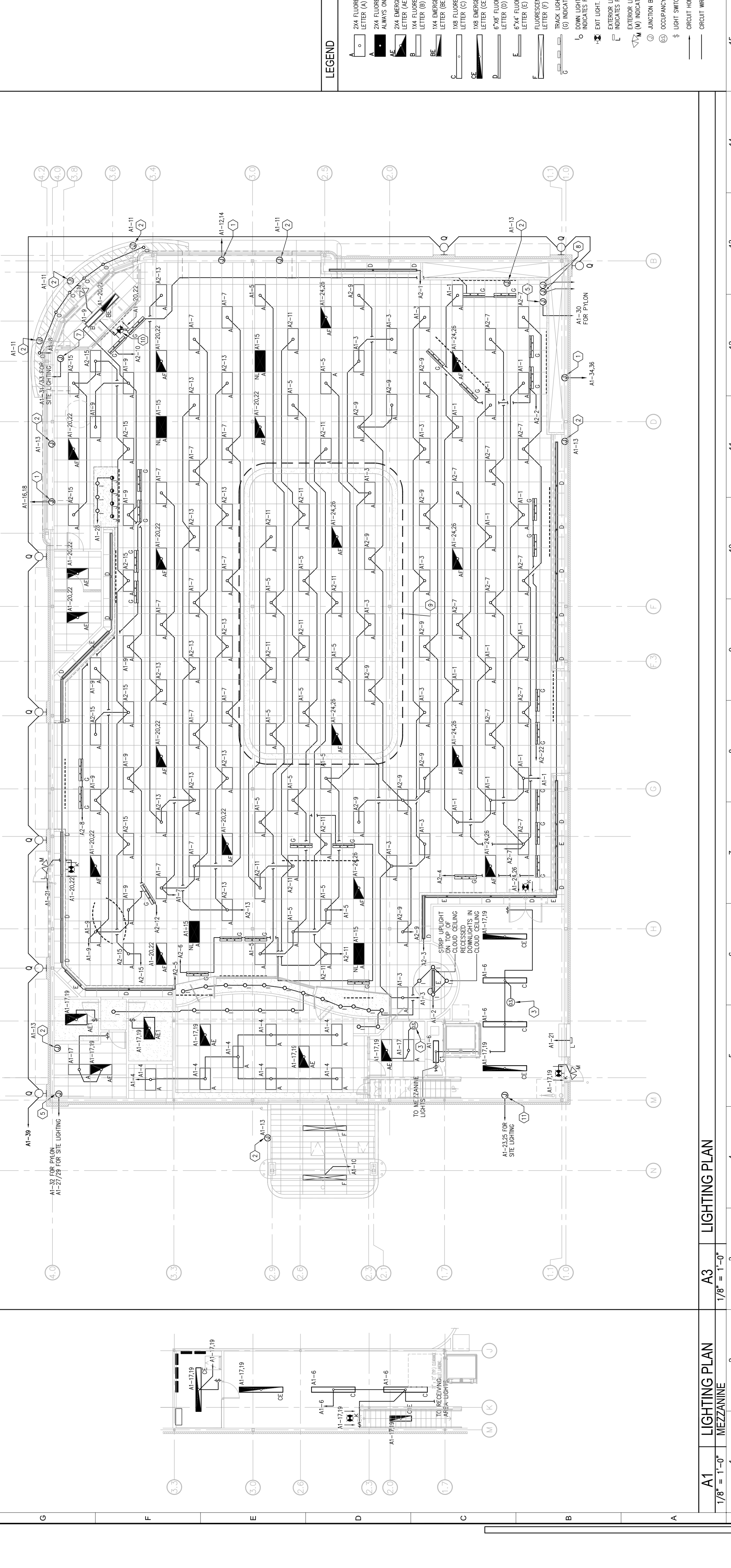
**LIGHTING ZONE CHART**

ZONE #	LIGHTS	CIRCUITS
1	5024 LIGHTING	A1-12,3,4,5,6,7,9,28,31,35,36,40
2	1024 LIGHTING	PANEL A2
3	WALL PACKS, SITE LIGHTING POLE CLOSEST TO FRONT ENTRANCE	A1-21,31,33
4	SITE LIGHTING Pylon SIGNS AND EMC	A1-23,25,27,29,30,32,41-37, EMC*
5	CANOPY LIGHTS, SIGNS	A1-8,10,11,12,13,14,16,18
NL	NIGHT LIGHTS	A1-15
EM	EMERGENCY LIGHTS	A1-17,19,20,22,24,26

\* EMC (ELECTRONIC MESSAGE CENTER)

**LIGHTING ZONE CHART**

K1  
N.T.S.



**LIGHTING ZONE CHART**

ZONE #	LIGHTS	CIRCUITS
1	5024 LIGHTING	A1-12,3,4,5,6,7,9,28,31,35,36,40
2	1024 LIGHTING	PANEL A2
3	WALL PACKS, SITE LIGHTING POLE CLOSEST TO FRONT ENTRANCE	A1-21,31,33
4	SITE LIGHTING Pylon SIGNS AND EMC	A1-23,25,27,29,30,32,41-37, EMC*
5	CANOPY LIGHTS, SIGNS	A1-8,10,11,12,13,14,16,18
NL	NIGHT LIGHTS	A1-15
EM	EMERGENCY LIGHTS	A1-17,19,20,22,24,26

\* EMC (ELECTRONIC MESSAGE CENTER)

**LIGHTING ZONE CHART**