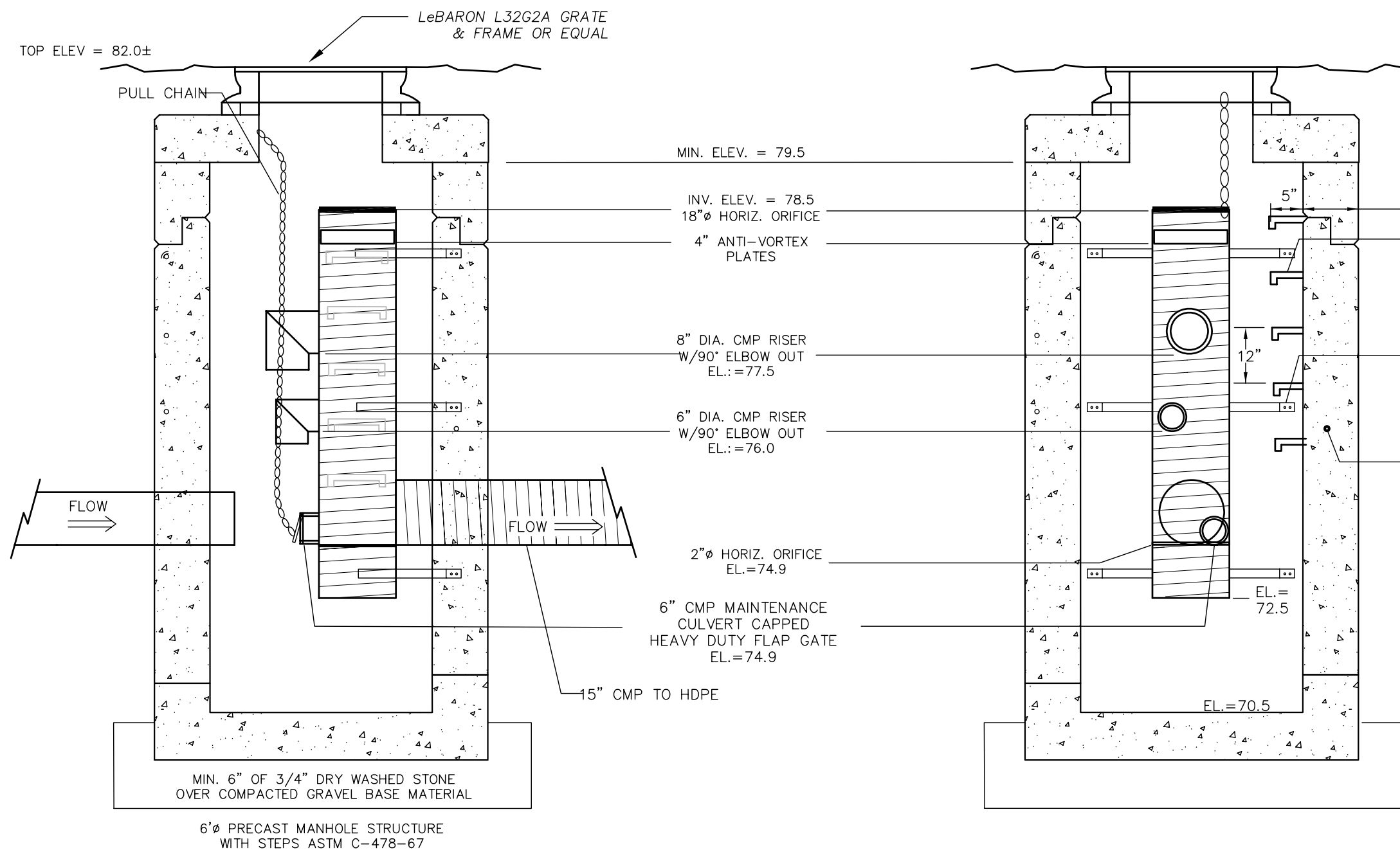
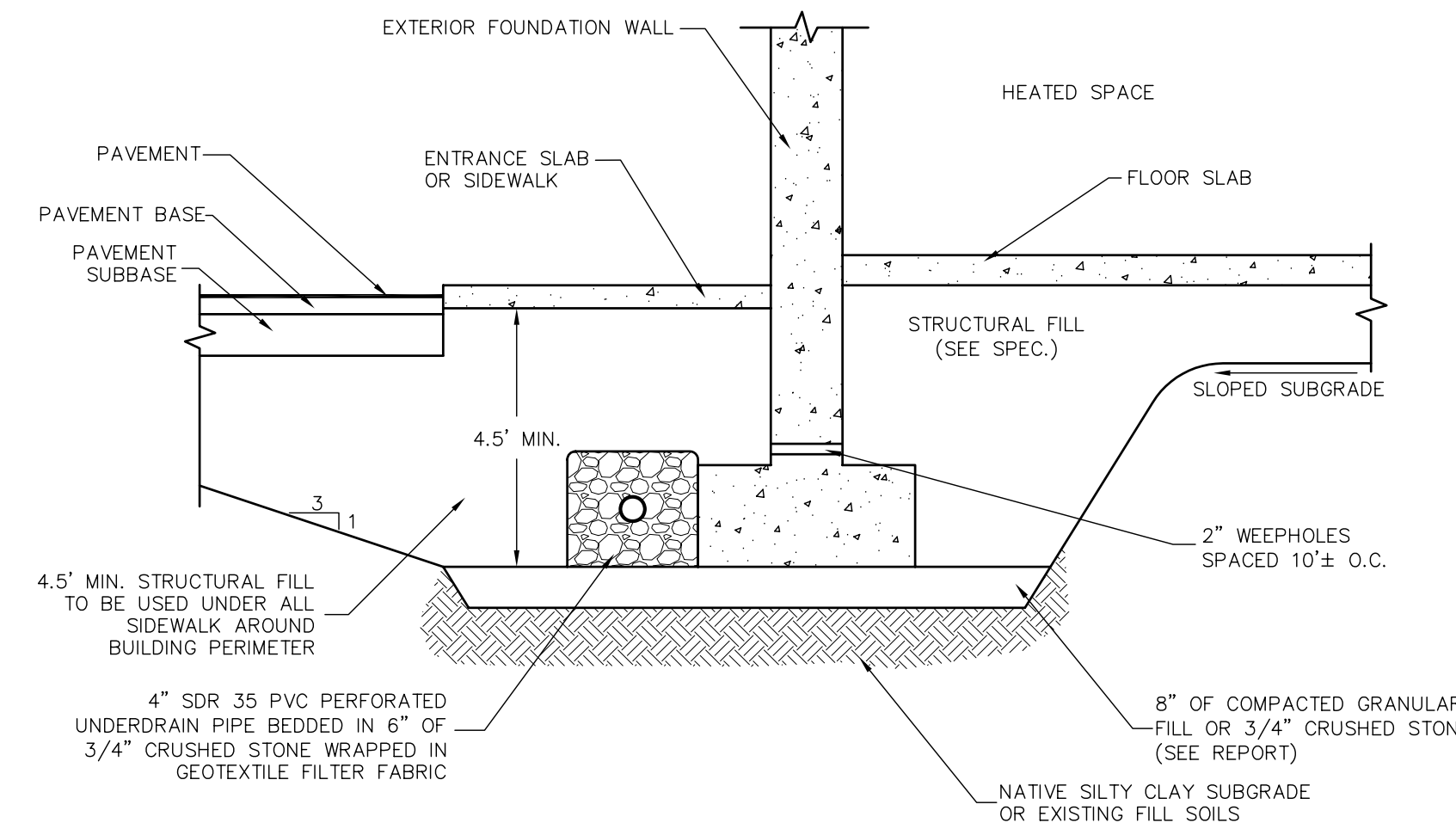


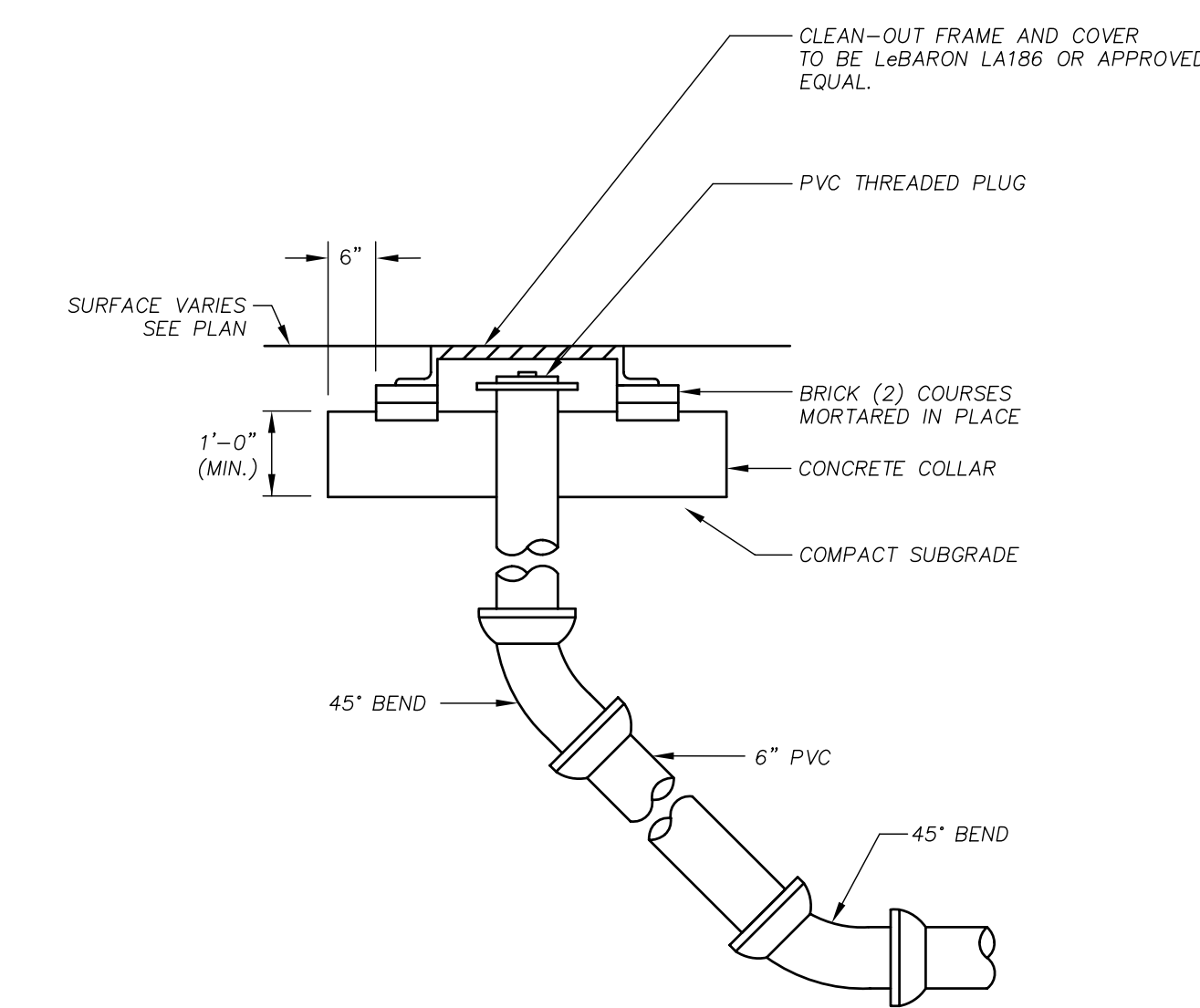
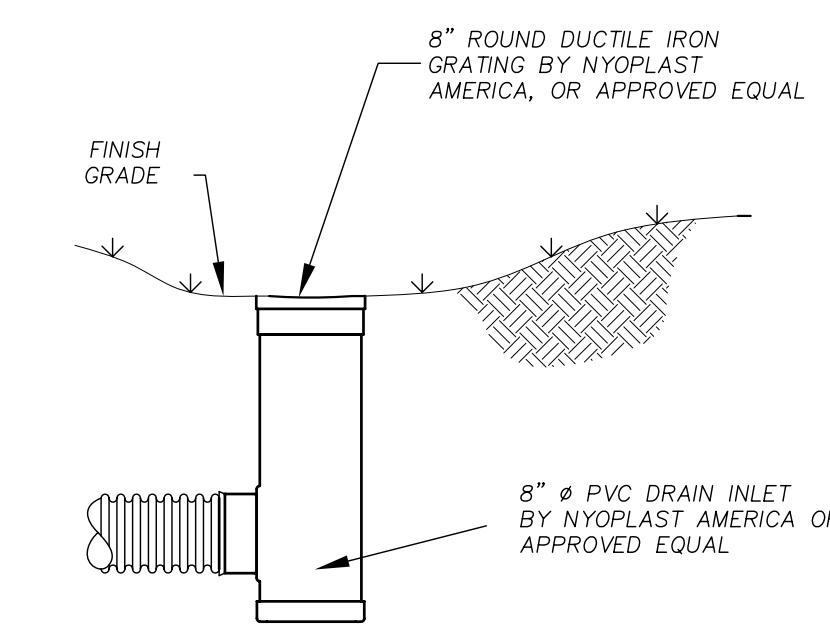
NOTE:
1. ALL CMP TO E ALUMINIZED TYPE 2 STEEL 12 GA. CONTRACTOR TO PROVIDE SHOP DRAWINGS FOR APPROVAL PRIOR TO CONSTRUCTION.
2. ALL MATERIALS & WORKMANSHIP TO CONFORM TO MAINE DEPT. OF TRANSPORTATION SPECIFICATIONS AND THE CITY OF PORTLAND TECHNICAL AND DESIGN STANDARDS.



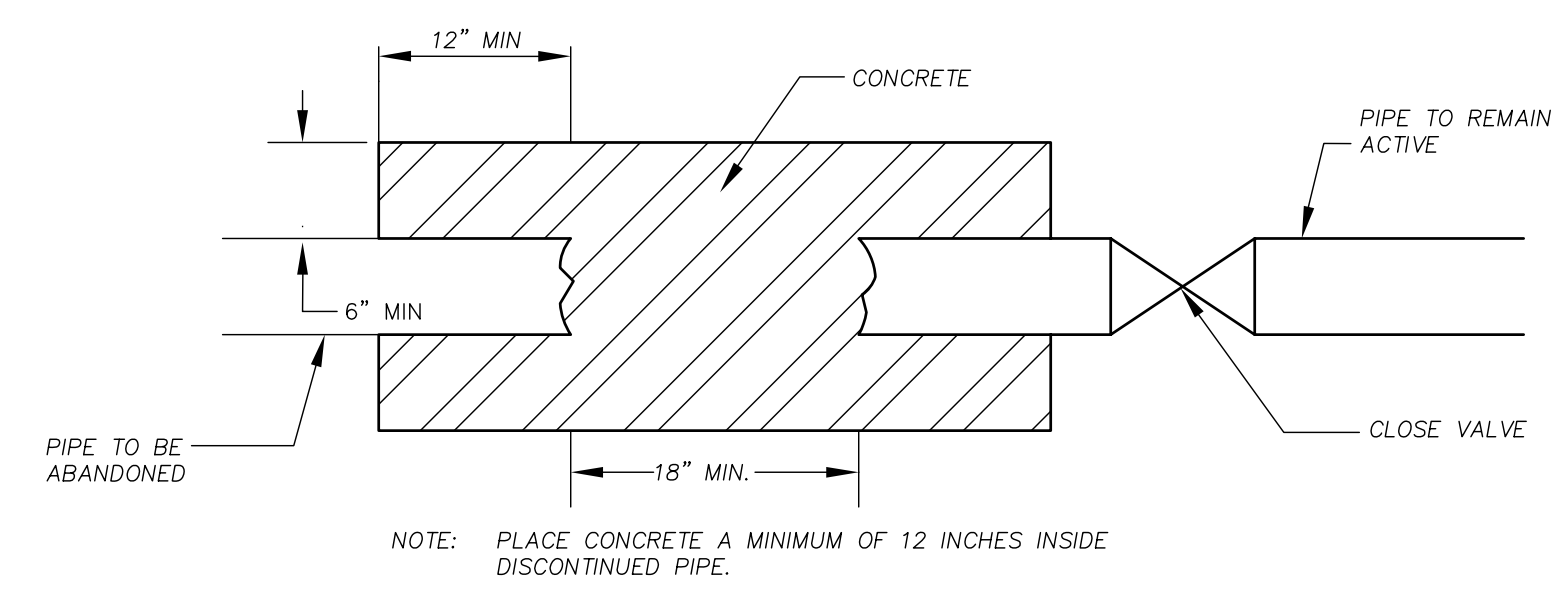
1 OUTLET STRUCTURE
D-4 N.T.S.



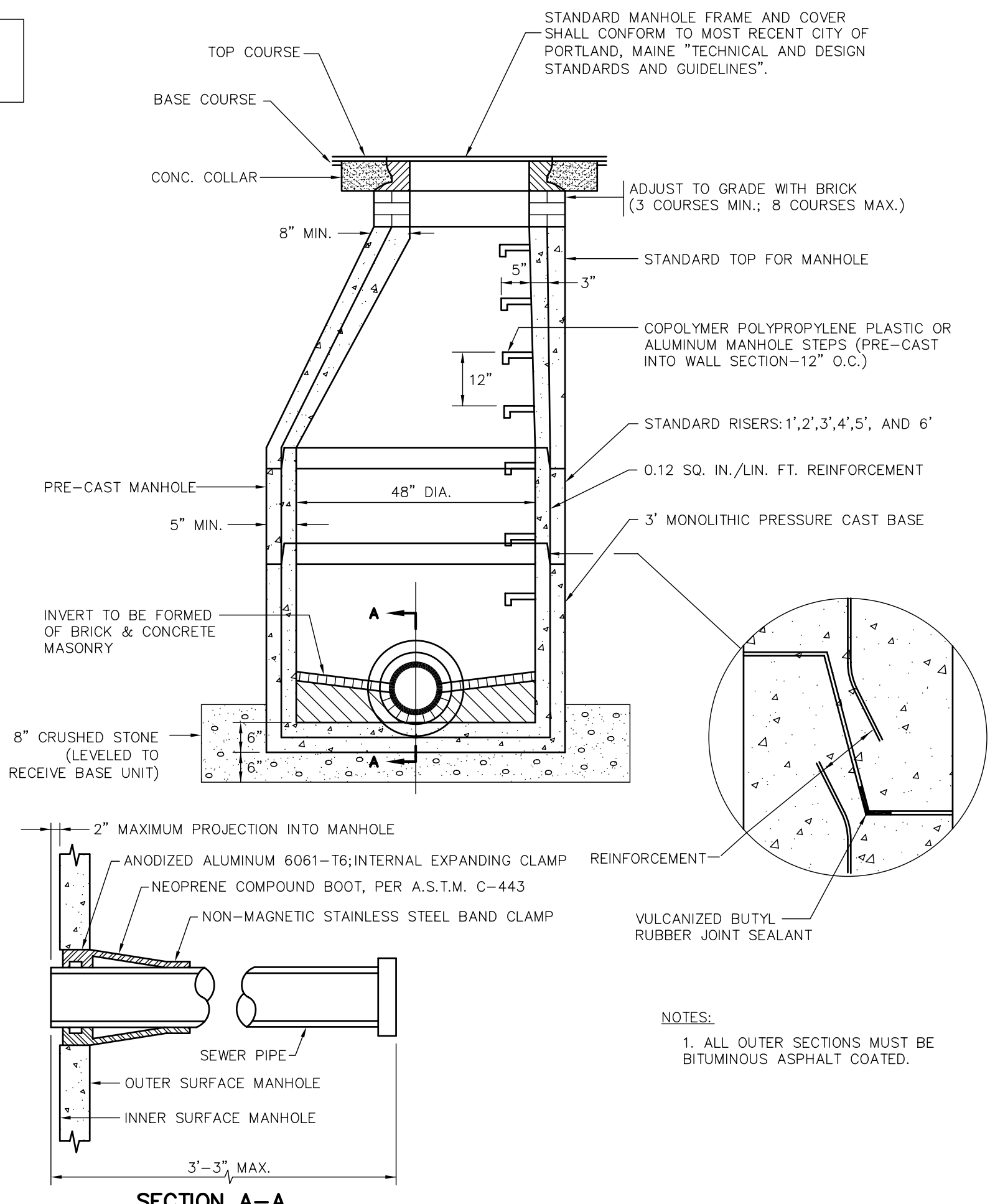
2 UNDERDRAIN DETAIL
D-4 N.T.S.



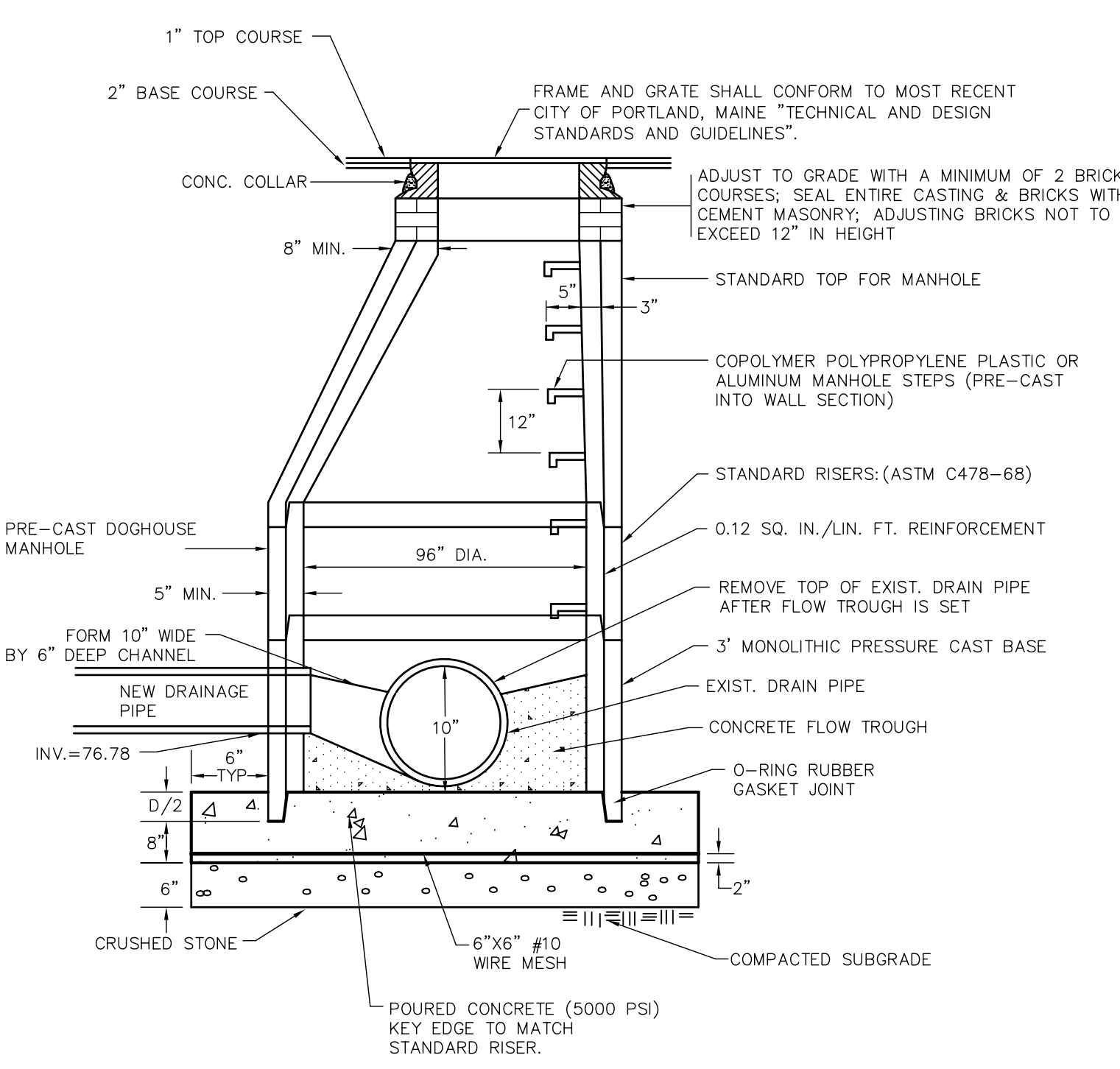
4 TYPICAL DRAIN CLEAN-OUT DETAIL
D-4 NOT TO SCALE



7 PLUGGED AND ABANDONED PIPE DETAIL
D-4 N.T.S.



6 STANDARD PRE-CAST SEWER MANHOLE
D-4 N.T.S.



5 "DOGHOUSE" MANHOLE W/ CAST IN PLACE BASE
D-4 N.T.S.

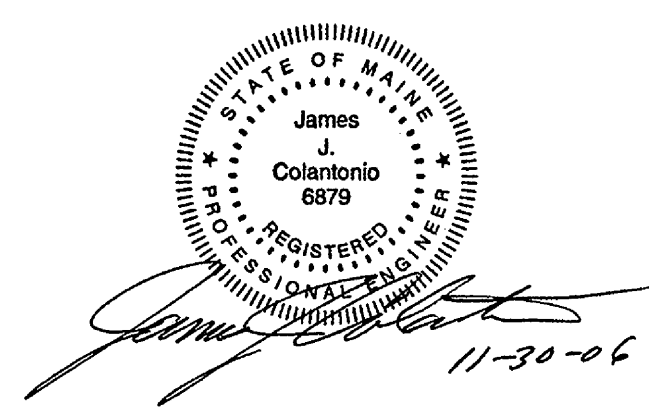
REVISIONS:

No.	DATE	REVISIONS PER CITY COMMENTS
1	04/11/05	REVISED PARCEL B LAYOUT
3	07/18/06	ADDITIONAL INTERIOR SIDEWALKS
4	08/22/06	ISSUED FOR GENERAL CONTRACTOR BID & BUILDING PERMIT
5	11/21/06	

GENERAL NOTES:

COLER & COLANTONIO INC
ENGINEERS AND SCIENTISTS

413-313-0100
Fax: 413-313-0190
www.col-col.com
55 Bobala Road
Holyoke, MA 01040



TITLE:
**CONSTRUCTION DETAILS
PROPOSED SITE DESIGN
RITE AID PHARMACY
365 ALLEN AVENUE
PORTLAND, ME**

PREPARED FOR:
**RITE AID CORPORATION
P. O. BOX 3165
HARRISBURG, PA 17105**

DATE: OCT. 19, 2004	D-4
COMP./DESIGN: STAFF	
CHECK: KK	
DRAWN: ELM	
SCALE: NONE	
JOB NO.: 60-61	
DWG NO.: 60-61 Details	