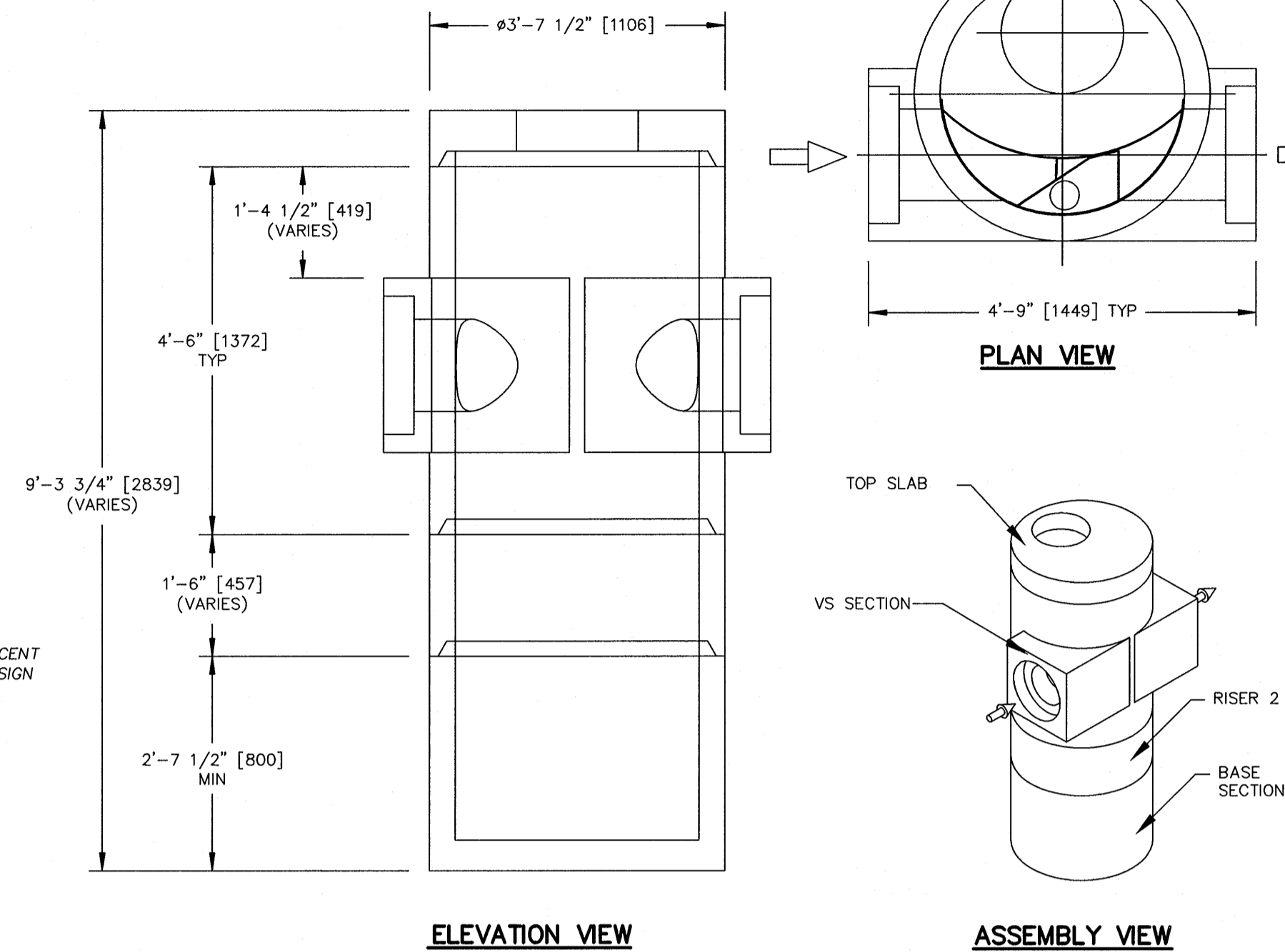
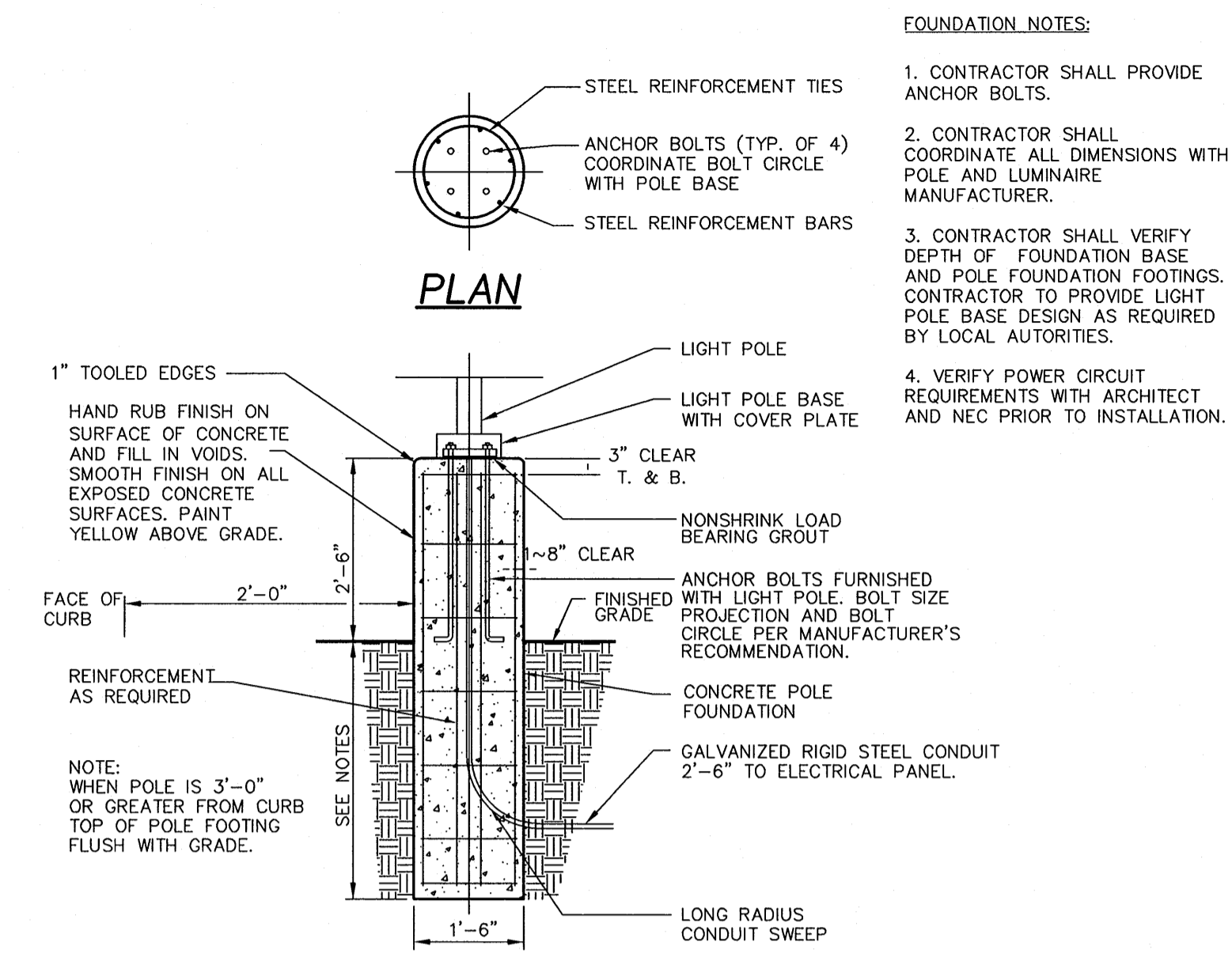


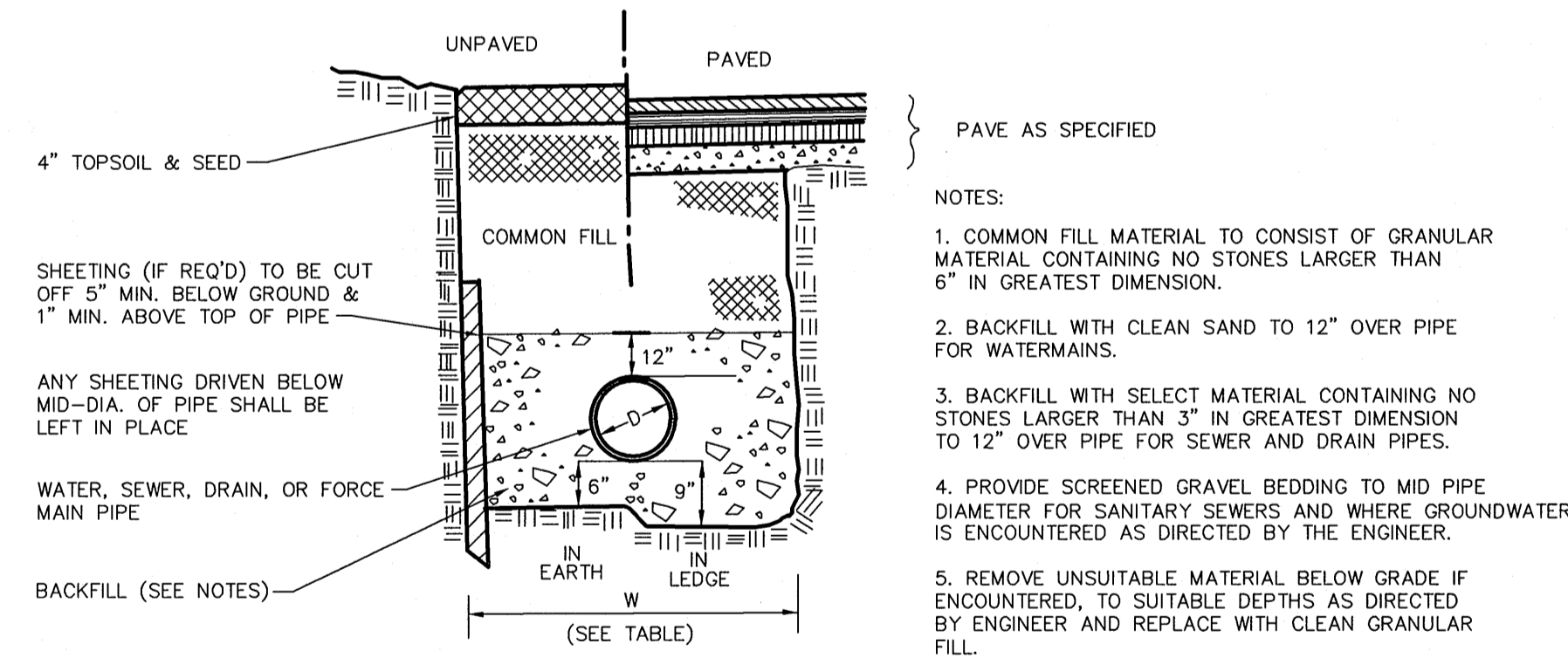
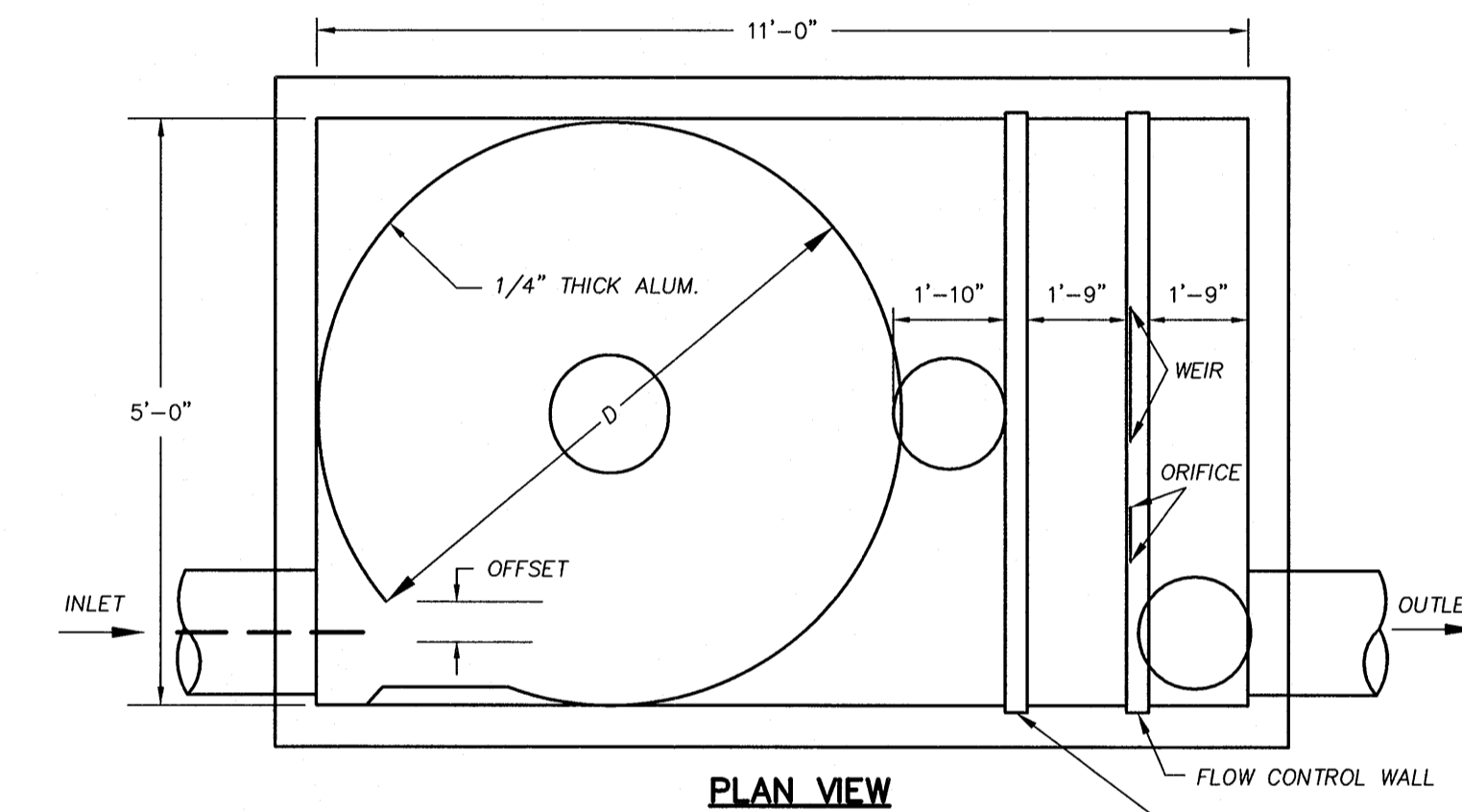
1
D-2 PRECAST CONCRETE CATCH BASIN
NOT TO SCALE



2
D-2 VORTENSITY MODEL VS40 STORMWATER TREATMENT SYSTEM[®]
N.T.S.



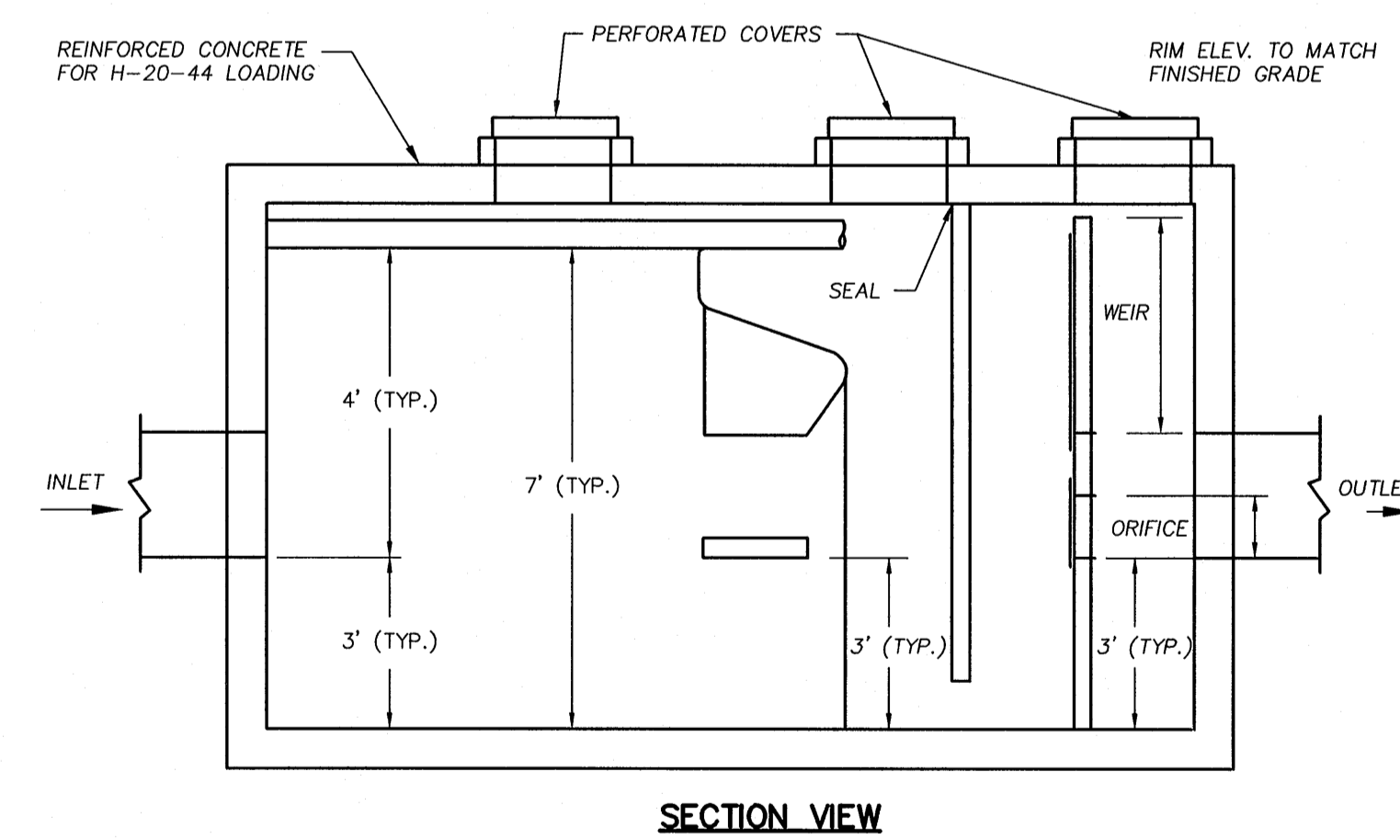
3
D-2 LIGHT POLE FOUNDATION DETAIL
N.T.S.



TRENCH WIDTH, W		
D	UN-SHEETED	W SHEETED
TO 12"	3'	4'
14" TO 24"	4'	5'
30" TO 36"	5'	6'

- NOTES:
1. ALL TRENCH CONSTRUCTION TO CONFORM TO APPLICABLE FEDERAL, STATE AND LOCAL REGULATIONS.
 2. COMPACT FILL AND TAMP PIPE TO 95% MAX. DENSITY UNLESS OTHERWISE SPECIFIED.

5
D-2 TYPICAL TRENCH SECTIONS
N.T.S.



VORTECHS [®] MODEL	GRIT CHAMBER DIAMETER/AREA FT/FT ²	PEAK DESIGN FLOW ^A CFS	SEDIMENT STORAGE ^B YDS ³	OIL STORAGE ^B GALS	APPROX. SIZE ^B L X W FT
3000	5/19.6	4.5	1.75	500±	11 X 5 (I.D.)

- NOTES:
- A. FOR IN-LINE VORTECHS SYSTEMS WITHOUT A BYPASS, SIZING CRITERIA IS BASED ON PROVIDING ONE SQUARE FOOT OF GRIT CHAMBER SURFACE AREA FOR EACH 100 GPM OF PEAK DESIGN STORM FLOW RATE (E.G., 10-YEAR STORM).
 - B. SEDIMENT AND OIL STORAGE VOLUMES ASSUME A 3 FOOT SUMP AND A 1 FOOT OPENING UNDER THE OIL BAFFLE.
 - C. THE SIZING INFORMATION ABOVE IS REPRESENTATIVE OF TYPICAL VORTECHS SYSTEMS. THE ABOVE CONFIGURATION OF INVERTS IS TYPICAL AND MAY OR MAY NOT CORRESPOND TO THAT SHOWN ON THE PLAN. CONSTRUCTION DETAILS MAY VARY DEPENDING ON THE SPECIFIC APPLICATION.
 - D. DETAILED SHOP DRAWINGS TO BE PREPARED BY THE MANUFACTURER AND SUBMITTED TO THE ENGINEER PRIOR TO CONSTRUCTION.

6
D-2 VORTECHS MODEL 3000 STORMWATER TREATMENT SYSTEM[®]
N.T.S.

REVISIONS:

No.	DATE	REVISIONS PER CITY COMMENTS
1	04/11/05	REVISIONS PER CITY COMMENTS
3	07/18/06	REVISED PARCEL B LAYOUT
4	08/22/06	ADDITIONAL INTERIOR SIDEWALKS
5	11-21-06	ISSUED FOR GENERAL CONTRACTOR BID & BUILDING PERMIT

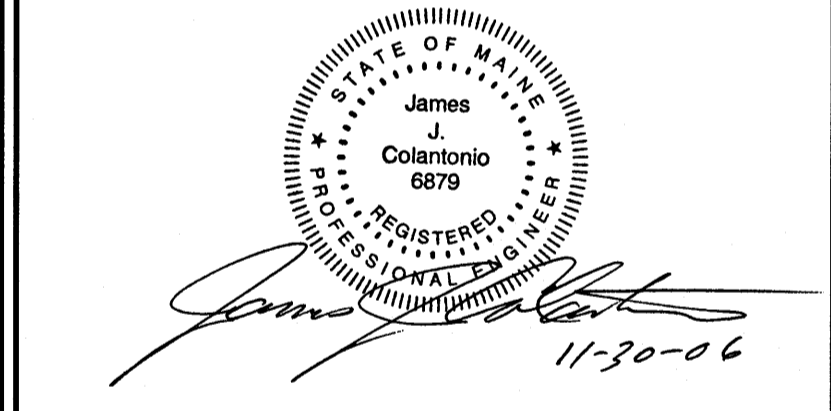
GENERAL NOTES:

1. CONTRACTOR SHALL PROVIDE ANCHOR BOLTS.
2. CONTRACTOR SHALL COORDINATE ALL DIMENSIONS WITH POLE AND LUMINAIRE MANUFACTURER.
3. CONTRACTOR SHALL VERIFY DEPTH OF FOUNDATION BASE AND POLE FOUNDATION FOOTINGS. CONTRACTOR TO PROVIDE LIGHT POLE BASE DESIGN AS REQUIRED BY LOCAL AUTHORITIES.
4. VERIFY POWER CIRCUIT REQUIREMENTS WITH ARCHITECT AND NEC PRIOR TO INSTALLATION.

COLER & COLANTONIO
ENGINEERS AND SCIENTISTS

413-313-0100
Fax: 413-313-0190
www.col-col.com

55 Babala Road
Holyoke, MA 01040



TITLE:

**CONSTRUCTION DETAILS
PROPOSED SITE DESIGN
RITE AID PHARMACY
365 ALLEN AVENUE
PORTLAND, ME**

PREPARED FOR:

**RITE AID CORPORATION
P. O. BOX 3165
HARRISBURG, PA 17105**

DATE: OCT. 19, 2004	D-2
COMP./DESIGN: ELM	
CHECK: KK	
DRAWN: ELM	
SCALE: NONE	
JOB NO.: 60-61	
DWG NO.: 60-61 Details	