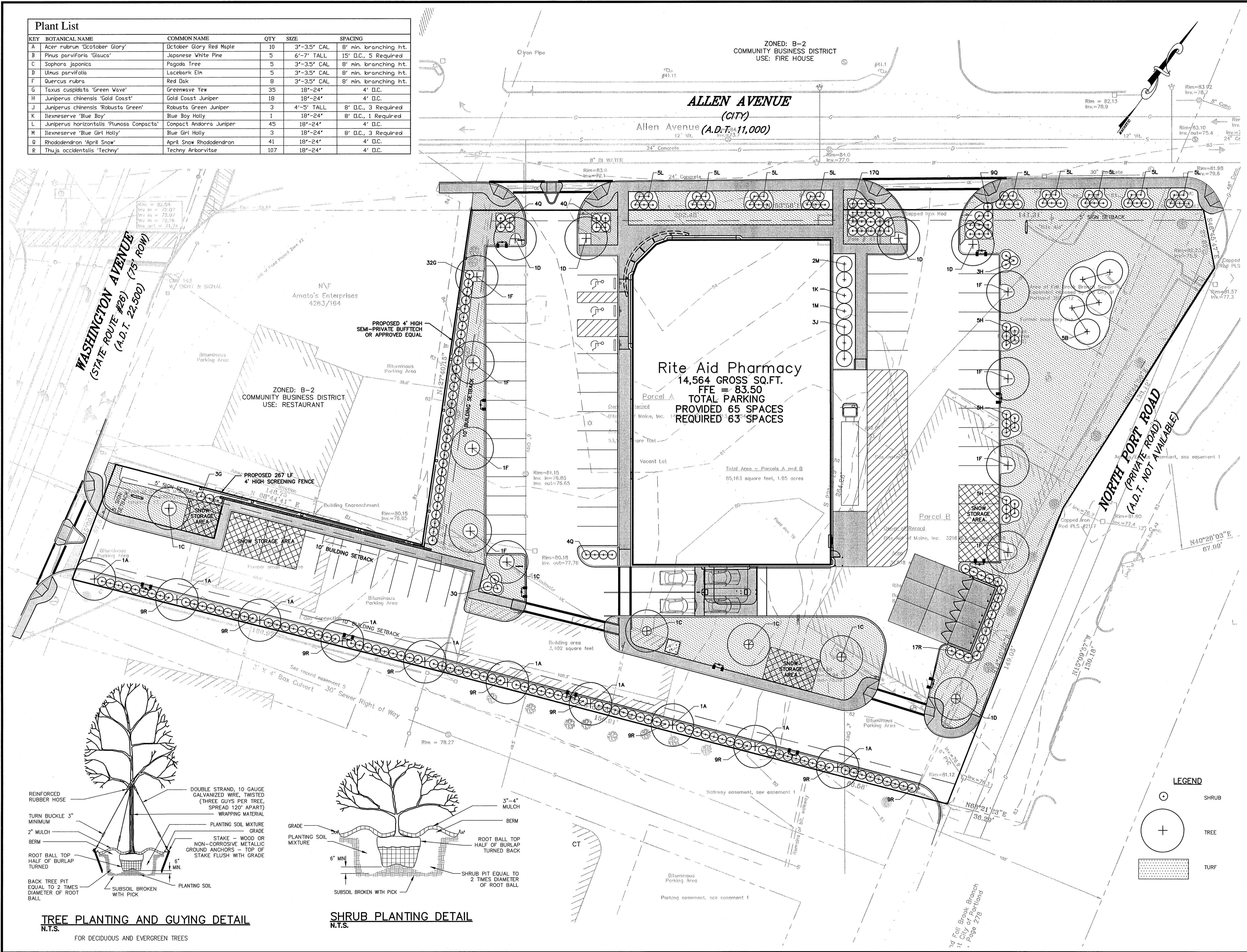


KEY	BOTANICAL NAME	COMMON NAME	QTY	SIZE	SPACING
A	Acer rubrum 'October Glory'	October Glory Red Maple	10	3"-3.5" CAL	8' min. branching ht.
B	Pinus parvifolia 'Glauca'	Japanese White Pine	5	6"-7" TALL	15' D.C., 5 Required
C	Sophora japonica	Pagoda Tree	5	3"-3.5" CAL	8' min. branching ht.
D	Ulmus parvifolia	Loebark Elm	5	3"-3.5" CAL	8' min. branching ht.
F	Quercus rubra	Red Oak	8	3"-3.5" CAL	8' min. branching ht.
G	Taxus cuspidata 'Green Wave'	Greenwave Yew	35	18"-24"	4' D.C.
H	Juniperus chinensis 'Gold Coast'	Gold Coast Juniper	18	18"-24"	4' D.C.
J	Juniperus chinensis 'Robusta Green'	Robusta Green Juniper	3	4'-5' TALL	8' D.C., 3 Required
K	Ilexmeserve 'Blue Boy'	Blue Boy Holly	1	18"-24"	8' D.C., 1 Required
L	Juniperus horizontalis 'Plumosa Compacta'	Compact Andorra Juniper	45	18"-24"	4' D.C.
M	Ilexmeserve 'Blue Girl Holly'	Blue Girl Holly	3	18"-24"	8' D.C., 3 Required
O	Rhododendron 'April Snow'	April Snow Rhododendron	41	18"-24"	4' D.C.
R	Thuja occidentalis 'Techny'	Techny Arborvitae	107	18"-24"	4' D.C.



REVISIONS:

No.	DATE	REVISIONS PER CITY COMMENTS
1	4-11-05	REVISIONS PER CITY COMMENTS
2	7-11-05	REVISIONS PER CITY COMMENTS
3	7-18-06	ENTRANCE OFF ALLEN AVE.
4	8-22-06	REVISED PARCEL B LAYOUT
5	11-21-06	ADDITIONAL INTERIOR SIDEWALKS ISSUED FOR GENERAL CONTRACTOR BID & BUILDING PERMIT

GENERAL NOTES:

1. PER APPROVAL BY PLANNING BOARD CONDITION 14, THE PROPOSED LANDSCAPING SHALL BE INSTALLED WITHIN 90 DAYS OF THE STORE BUILDING COMPLETION OR AS SOON AS WEATHER PERMITS.

COLER & COLANTONIO INC.
ENGINEERS AND SCIENTISTS

Ph: 413-313-0100
Fax: 413-313-0190
www.col-col.com

55 Bobola Road
Holyoke, MA 01040

TITLE:

**LANDSCAPE PLAN
PROPOSED SITE DESIGN
RITE AID PHARMACY
365 ALLEN AVENUE
PORTLAND, ME**

PREPARED FOR:
**RITE AID CORPORATION
P. O. BOX 3165
HARRISBURG, PA 17105**

DATE: MAR. 27, 2006	LS-1
COMP./DESIGN: JMM	
CHECK: KK	
DRAWN: STZ	
SCALE: 1" = 20'	
JOB NO.: 60-061	
DWG NO.: 60-61 RiteAid 11-20-06	

