

**PHASE 2A - DEMO**

DISMANTLING AND DEMO OF OLD STORE BEGINS, INCLUDING EXISTING UTILITIES AND INFRASTRUCTURE.  
 DEMO AND DISPOSE OLD BUILDING - COORDINATE WITH LL BEAN FOR ACTIVITY OF NORTH PORT ROAD FOR MATERIAL REMOVAL.  
 REMOVE PAVEMENT AND CURB, FILL EXISTING FOUNDATION.

**REVISIONS:**

No.	DATE	REVISIONS PER CITY COMMENTS
1	4-11-05	REVISIONS PER CITY COMMENTS
2	7-11-05	REVISIONS PER CITY COMMENTS
3		ENTRANCE OFF ALLEN AVE.
4		ISSUED FOR GENERAL CONTRACTOR
5	11-21-06	BID & BUILDING PERMIT

- GENERAL NOTES:**
- THIS DEMO PLAN IS FOR ILLUSTRATIVE PURPOSES ONLY. CONTRACTOR TO REMOVE, RELOCATE, PROTECT, MAINTAIN AND/OR REPLACE ALL CONFLICTING UTILITIES WITHIN THE LIMIT OF WORK TO BUILD THE IMPROVEMENTS.
  - BACKFILL OF REMOVED UTILITIES FOUNDATIONS TO BE COMPLETED IN ACCORDANCE WITH THE RECOMMENDATIONS OF THE GEOTECHNICAL ENGINEER AND STRUCTURAL ENGINEER. CONTRACTOR TO REFER TO S.W. COLE ENGINEERING, INC. REPORT FOR RITE AID STORE 04-0266.1 DATED 4-30-04.
  - CONTRACTOR TO COORDINATE UTILITY SERVICE SHUT-OFFS & TEMPORARY CONNECTIONS WITH OWNER'S REPRESENTATIVE AND APPLICABLE UTILITY PURVEYORS.
  - COORDINATE ALL WORK OUTSIDE SECURITY FENCED WITH ABUTTERS, CITY, AND UTILITY PURVEYORS.
  - COORDINATE SECURITY FENCE REQUIREMENTS WITH OWNER PRIOR TO START OF CONSTRUCTION.
  - EXISTING RITE AID TO REMAIN OPERATIONAL THROUGH CERTIFICATE OF OCCUPANCY FOR NEW BUILDING.

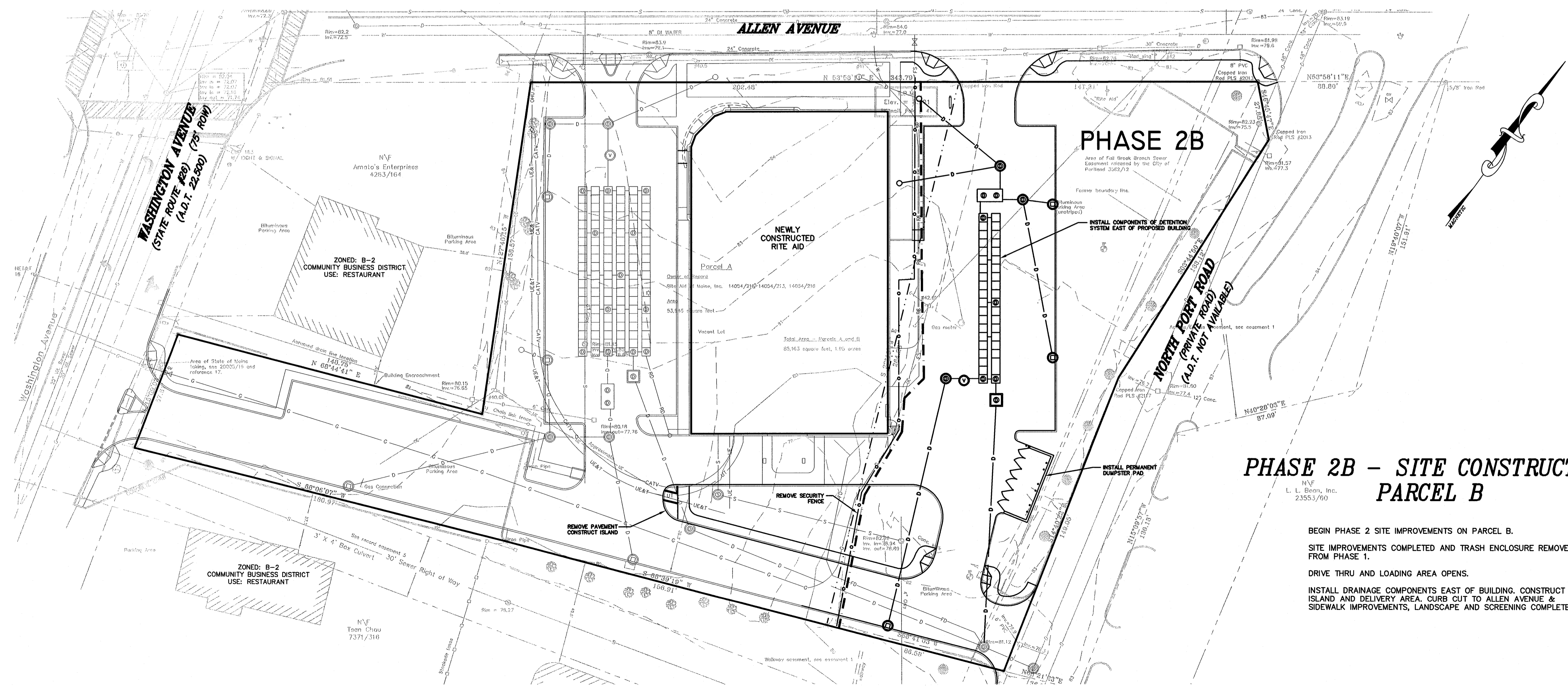
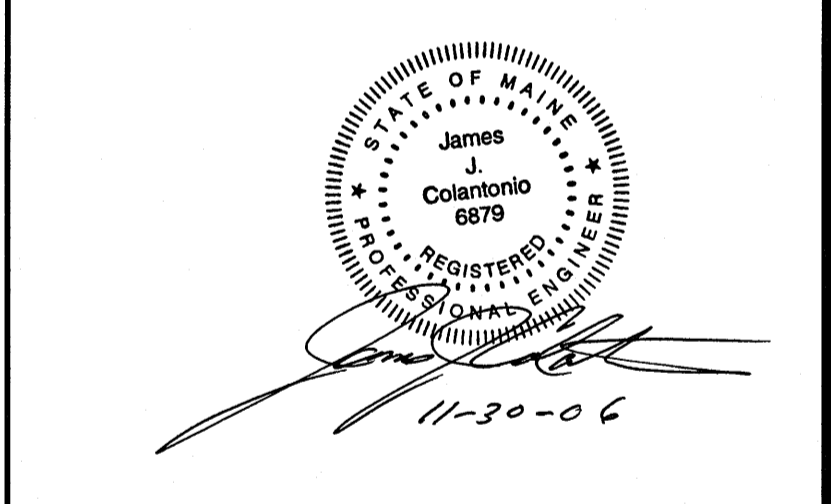
**LEGEND**

	INTERIOR PROPERTY LINE
	CONSTRUCTION FENCE
	SAWCUT
	SILT FENCE
	REMOVE & DISPOSE PAVEMENT
	CONSTRUCTION ENTRANCE
	DEMO BUILDING

**COLER & COLANTONIO**  
 ENGINEERS AND SCIENTISTS

Ph: 413-313-0100  
 Fax: 413-313-0190  
 www.col-col.com

55 Bobola Road  
 Holyoke, MA 01040



**PHASE 2B - SITE CONSTRUCTION PARCEL B**

BEGIN PHASE 2 SITE IMPROVEMENTS ON PARCEL B.  
 SITE IMPROVEMENTS COMPLETED AND TRASH ENCLOSURE REMOVED FROM PHASE 1.  
 DRIVE THRU AND LOADING AREA OPENS.  
 INSTALL DRAINAGE COMPONENTS EAST OF BUILDING, CONSTRUCT ISLAND AND DELIVERY AREA, CURB CUT TO ALLEN AVENUE & SIDEWALK IMPROVEMENTS, LANDSCAPE AND SCREENING COMPLETED.

**TITLE:**  
**PHASING & DEMO PLAN  
 PROPOSED SITE DESIGN  
 RITE AID PHARMACY  
 365 ALLEN AVENUE  
 PORTLAND, ME**

**PREPARED FOR:**  
**RITE AID CORPORATION  
 P. O. BOX 3165  
 HARRISBURG, PA 17105**

DATE: AUG. 30, 2006	<b>PD-2</b>
COMP./DESIGN: JMM	
CHECK: KK	
DRAWN: STZ	
SCALE: 1" = 30'	
JOB NO.: 60-061	
DWG NO.: 60-61 RiteAid demo.dwg	

30 15 0 30 60