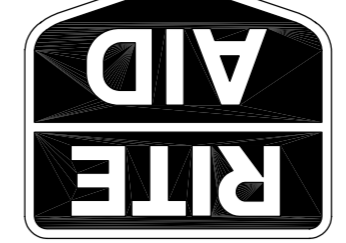


BRUCE
RONAYNE
HAMILTON
ARCHITECTS

ARCHITECTS
INTERIOR DESIGN
LANDSCAPE ARCHITECTS
PLANNING
100 WASHINGTON AVENUE
PORTLAND, MAINE 04101
NEW HAMPSHIRE 03071

RITE AID STORE #4122
WASHINGTON & ALLEN AVENUE
PORTLAND, MAINE

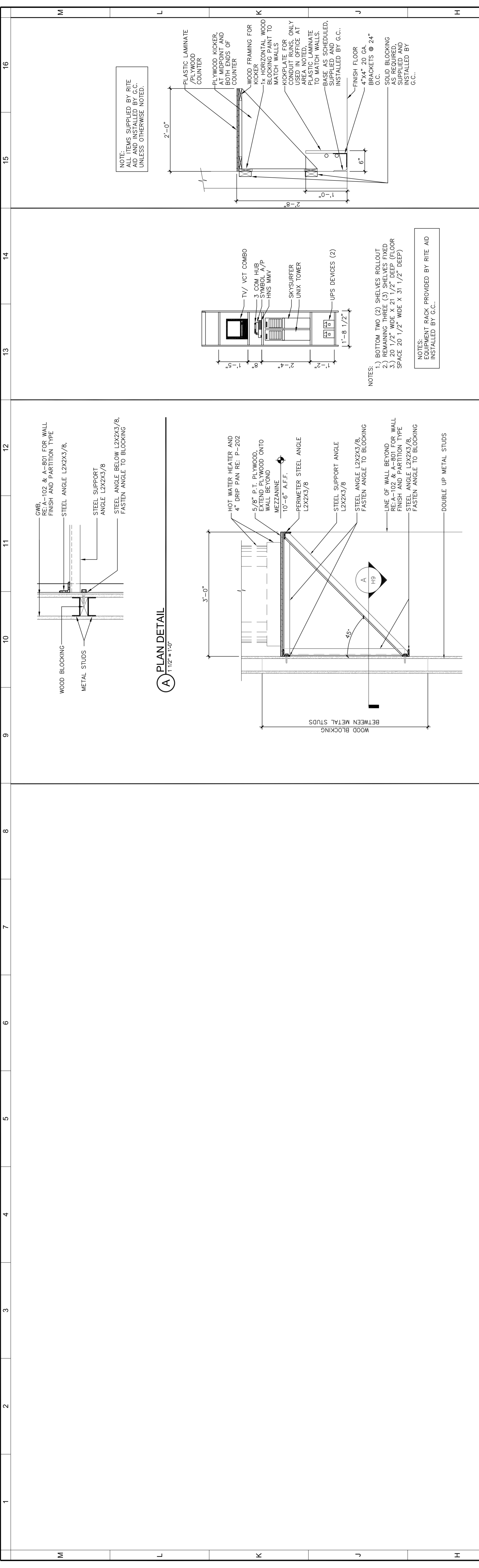


REVISIONS
10-27-06 ISSUED FOR BUILDING PERMIT/C/BIDDING

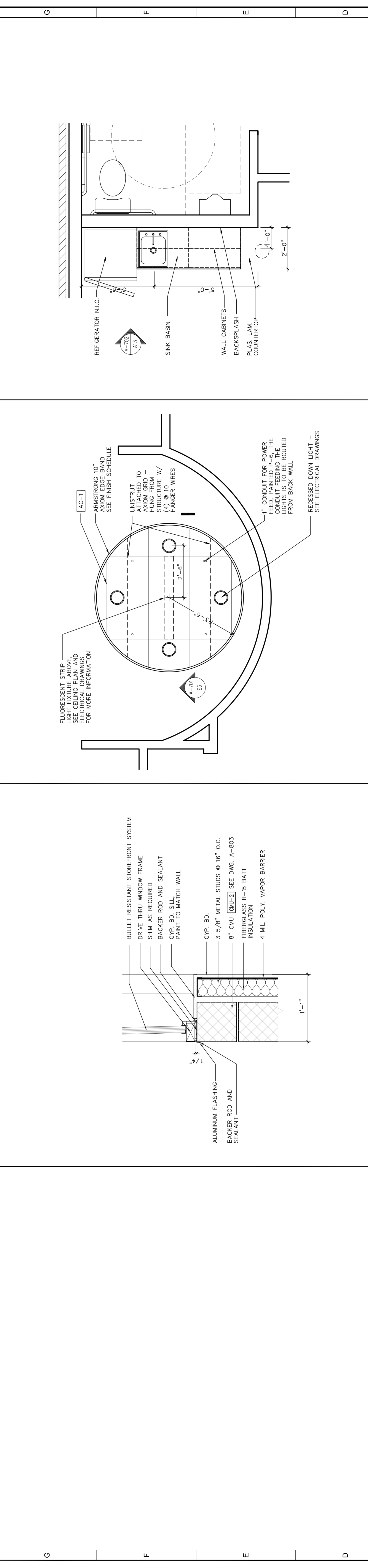
Drawn: [Blank]
Checked: [Blank]
Approved: [Blank]
Project No: 0025
Date: 10-27-06
Title: INTERIOR DETAILS

Sheet No.

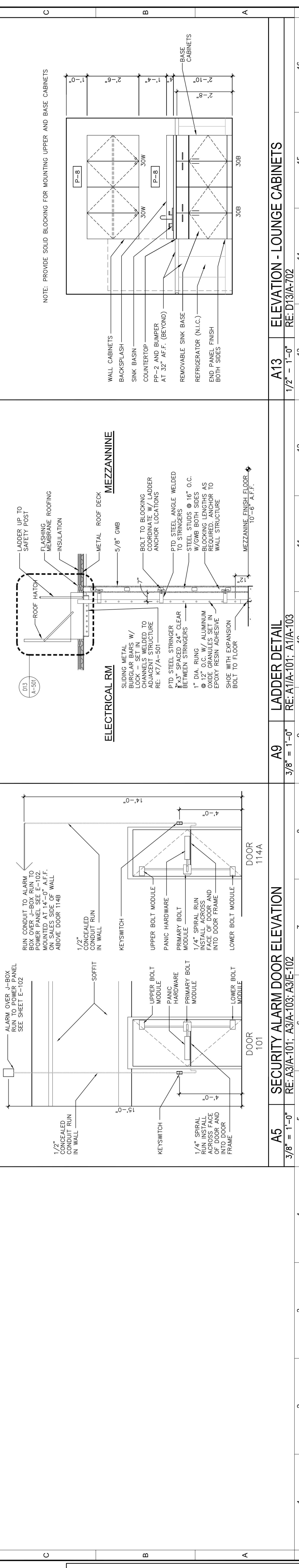
A-702



H9	1" = 1'-0"	WATER HEATER SUPPORT DETAIL RE: A10/P-202; A14/P-202	H13	1/2" = 1'-0"	EQUIPMENT RACK RE: A11/A-602	H15	1" = 1'-0"	COUNTER DETAIL RE: A11/A-602
----	------------	---	-----	--------------	---------------------------------	-----	------------	---------------------------------



D9	1/2" = 1'-0"	REFLEC. CEILING DETAIL @ WAITING RE: A3/A-103	D13	1/2" = 1'-0"	PLAN - LOUNGE CABINETS RE: A13/A-702; A1/A-603	D16	1/2" = 1'-0"	ELEVATION - LOUNGE CABINETS RE: D13/A-702
----	--------------	--	-----	--------------	---	-----	--------------	--



D5	1 1/2" = 1'-0"	SILL DETAIL AT DRIVE THRU RE: A1/A-603; A7/A-403	A5	3/8" = 1'-0"	SECURITY ALARM DOOR ELEVATION RE: A3/A-101; A3/A-103; A3/E-102	A9	3/8" = 1'-0"	LADDER DETAIL RE: A1/A-101; A1/A-103
----	----------------	---	----	--------------	---	----	--------------	---