

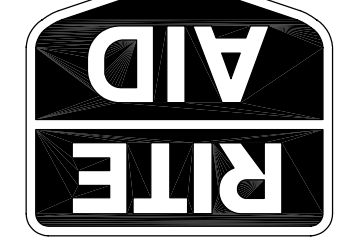


BRUCE
RANNA
HAMILTON
ARCHITECTS

ARCHITECTS
INTERIOR DESIGN
LANDSCAPE ARCHITECTS
PLANNING
CONSULTANTS

100 WATER STREET
NEW HAMPSHIRE 03021

RITE AID STORE #4122
WASHINGTON & ALLEN AVENUE
PORTLAND, MAINE



ISSUED FOR BUILDING PERMIT/CC BIDDING
10-27-06

Drawn: RCK
Checked: RCK
Approved: RCK
Project No.: 0525
Date: 10-27-06

Title:
FIXTURE AND GRAPHICS PLAN

Sheet No.

A-104

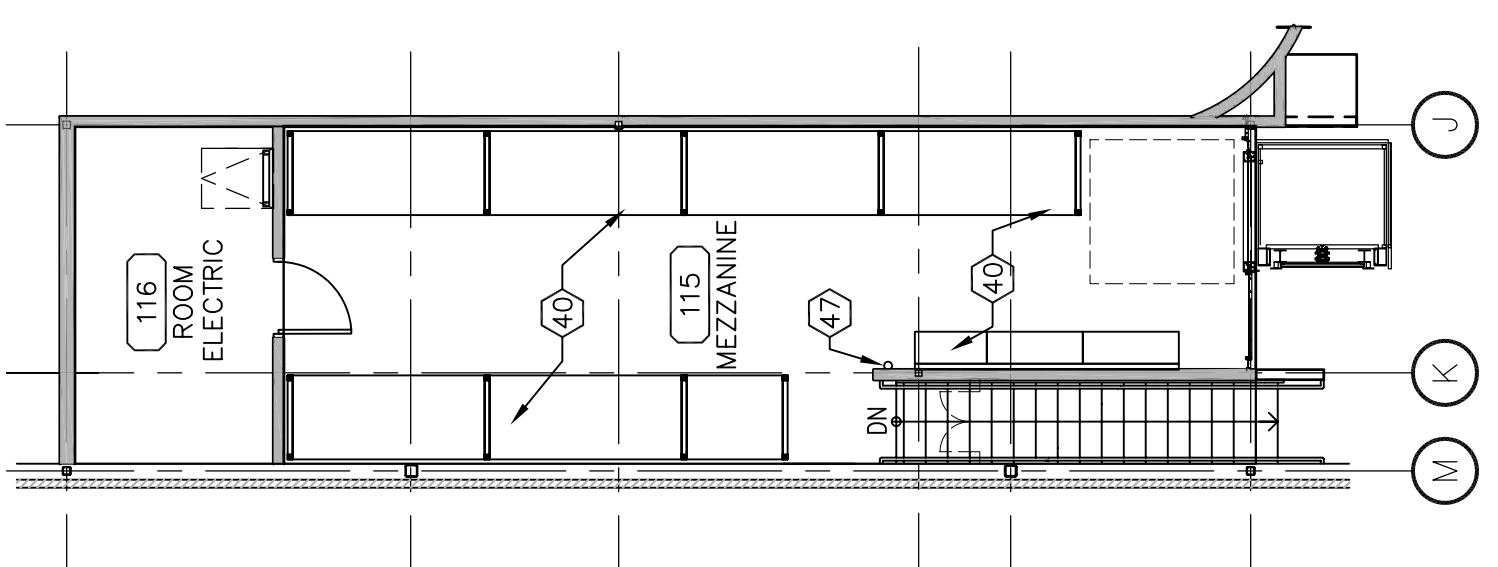
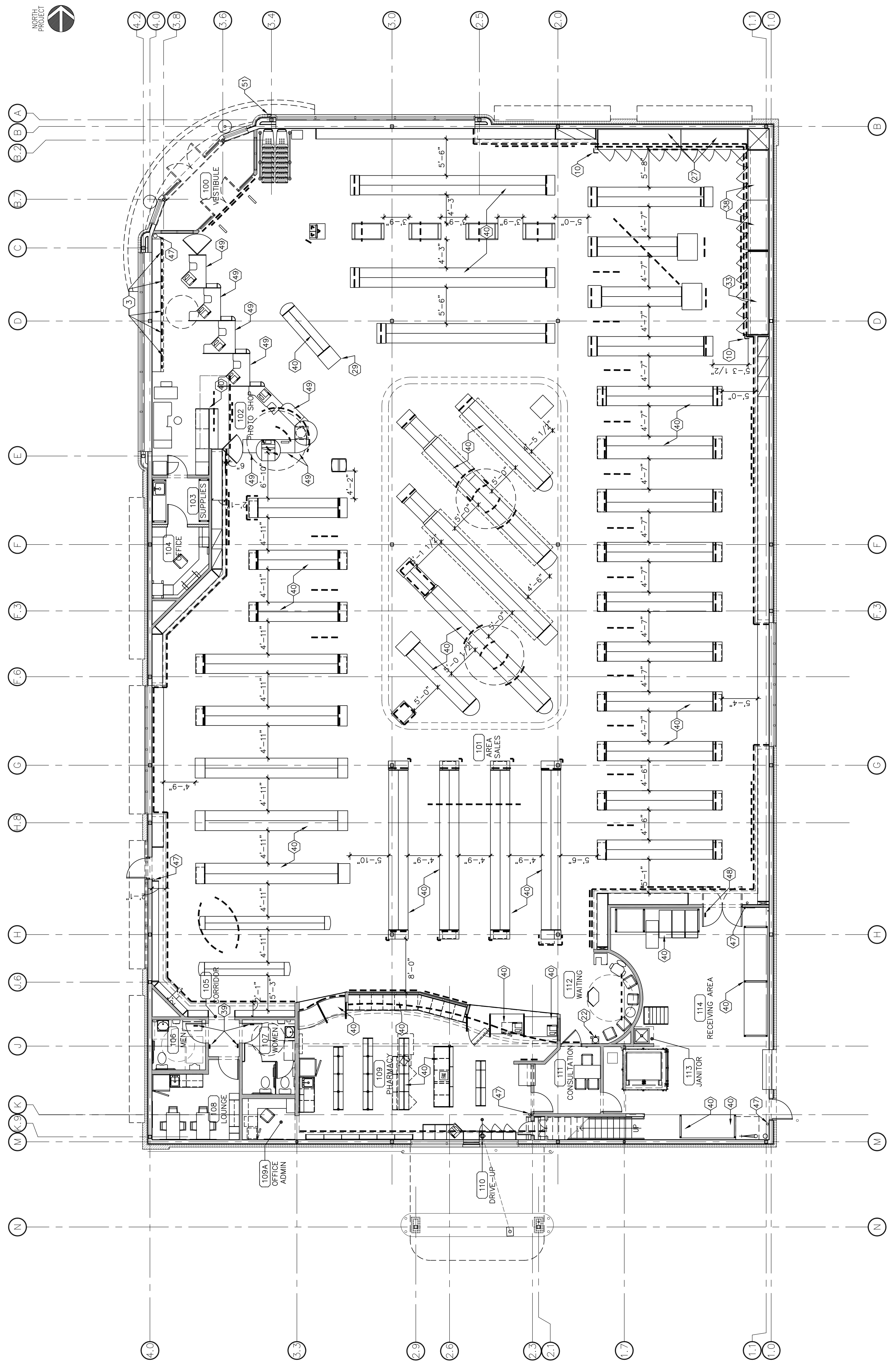
SHEET NOTES

1. TUBE STEEL COLUMN, PROVIDE 24 GA. BRUSHED STAINLESS STEEL COLUMN COVER W/ SINGLE LAP SEAM FROM FLOOR TO 12" A.F.F. ABOVE CEILING. PROVIDE 24 GA. BRUSHED STAINLESS STEEL COLUMN COVER W/ SINGLE LAP SEAM FROM FLOOR TO 12" A.F.F. ABOVE CEILING. SEAL TOP OF COVER W/ CLEAR SILICONE. SEE STRUCTURAL DRAWINGS FOR MORE INFORMATION.
2. TUBE STEEL COLUMN ENCLOSED IN WALL OR PARTITION.
3. TUBE STEEL COLUMN TO BE WRAPPED IN CLEAR ANODIZED BRACK METAL ENCASEMENT FROM WINDOW SILL TO SOFFIT ABOVE. RE: 9/2/A-502
4. TUBE STEEL COLUMN, PAINT P-8 FROM FLOOR TO 12" ABOVE CEILING.
5. LINE OF CONCRETE CURB, SEE CIVIL PLANS.
6. 4" BOLLARD, SEE CIVIL PLANS. THE BOLLARD NEXT TO THE RX DRIVE THRU WINDOW DRAWER IS TO BE 3'-6" A.F.C.
7. REMOVE DRIVE THRU.
8. 6" BOLLARD, SEE CIVIL PLANS.
9. CONDUIT SEE E-102 FOR LOCATION. PAINT P-11
10. MIDDLE CORPORATION - CARSTOP SR - MODEL MAIN-13. CARSTOP TO BE INSTALLED AT THE OUTSIDE CORNER OF THE CURB. SEE CIVIL PLANS. SPACED BY RITE AID AND INSTALLED BY THE EDGE OF THE CURB.
11. HOT WATER HEATER PLATFORM RE: 9/9/A-702.
12. PLUMBING FIXTURE LOCATION, SEE PLUMBING DRAWINGS. COORDINATE PLUMBING LOCATION WITH FIXTURE MANUFACTURER.
13. WATER CLOSET, SEE PLUMBING DRAWINGS.
14. LAVATORY, SEE PLUMBING DRAWINGS.
15. URINAL, SEE PLUMBING DRAWINGS.
16. TOILET PARTITION, FINISH RP-1, SEE FINISH SCHEDULE.
17. ROOF DRAIN / OVERFLOW PIPING LOCATION, SEE PLUMBING DRAWINGS.
18. WATER SERVICE LOCATION.
19. SPRINKLER SERVICE LOCATION WHEN REQUIRED.
20. 2'-0" X 5'-6" AREA TO REMAIN CLEAR FOR ACCESS TO SPRINKLER RISER.
21. ROOF RAIN SEE P-101.
22. PURE WATER COOLER BY VERTEX, SUPPLIED AND INSTALLED BY THE C.C. SEE A12/P-201.
23. LINE OF MEZZANINE ABOVE.
24. LINE OF SOFFIT ABOVE, SEE REFLECTED CEILING PLAN ON A-103.
25. DRYWALL ON BACK SIDE OF VALANCE TO EXTEND TO ROOF DECK.
26. ALIGN FINISH FACES W/ SOFFIT ABOVE OR EDGE OF WINDOW OPENING.
27. PHOTO CASES, SUPPLIED AND INSTALLED BY RITE AID. CONTRACTOR TO COORDINATE POWER, MECHANICAL AND WASTE CONNECTIONS.
28. LINE OF MEZZANINE STAIRS, SEE A-703.
29. SELF CONTAINED COOLER BY RITE AID AND INSTALLED BY C.C.
30. ROOF LADDER AND HATCH OPENING ABOVE, RE: 9/9/A-702
31. CEILING CLOUD HUNG FROM STRUCTURE ABOVE, SEE DETAIL.
32. E3/A-701 - ACCESS PANEL IN SOFFIT C.C. TO COORDINATE LOCATION WITH GRAPHICS AND EQUIPMENT. PANEL(S) A COOLER / FREEZERS MOUNTED AT 5'-0" TO BOTTOM OF PANEL(S) AND 9'-0" TO BOTTOM OF PANEL(S). SEE CIVIL PLANS.
33. FREEZER CASES, SUPPLIED BY AND INSTALLED BY RITE AID. CONTRACTOR COORDINATE POWER, MECHANICAL AND WASTE CONNECTIONS.
34. EXTENT OF ADA TURNING REQUIREMENTS.
35. WATER RESISTANT GYPSUM BOARD BEHIND PHARMACY SINK.
36. ROLLING SECURITY GRILLE. SEE DOOR SCHEDULE ON A-801.
37. UNISTRUT @ 2'-0" O.C. ATTACHED TO BOTTOM CHORD OF BAR JOIST W/ 1/2" ALL-THREAD TIED TO WALL FRAMING FOR LATERAL BRACING.
38. REFRIGERATION ACCESS CONTRACTOR TO SUPPLY AND INSTALL. COORDINATE POWER, MECHANICAL AND WASTE CONNECTIONS.
39. GC TO PROVIDE REQUIRED REST ROOM SIGNAGE. SEE DETAIL K10/A-600 FOR MORE INFORMATION.
40. FURNITURE BY RITE AID, INSTALLED BY C.C. SEE FIXTURE PLAN ON A-104.
41. APPLIANCES BY RITE AID, INSTALLED BY C.C. SEE FIXTURE PLAN ON A-104.
42. SECURITY FINGERSTALS BY RITE AID. SEE NOTE 14 ON E-102.
43. CART GUARD RAILING - SUPPLIED BY RITE AID, INSTALLED BY C.C. UNUSED.
44. FLOW AND COMPRESSOR W/ 5" DEEP PIT RECESSED INTO SLAB.
45. FIRE EXTINGUISHERS, PROVIDED BY AND INSTALLED BY RITE AID. SEE A-104.
46. RITE AID TO PROVIDE "EMPLOYEES ONLY" SIGNAGE. PHOTO CASES TO BE MOUNTED ON DOOR #146 ONLY. MOUNT ON SALES AREA SIDE OF THE DOOR.
47. G.C. TO INSTALL COVE BASE, CB-2 ON BOTH SIDED OF EXPOSED PORTIONS OF CHECKOUT.
48. 30"x30" ACCESS PANEL MOUNTED 1'-0" AFF. SEE K7/A-801.
49. KNOX BOX MOUNTED 4'-4" A.F.F. MODEL NUMBER 3200 RECESSED WITH HINGED DOOR AND TAMPER SWITCH RED INTO WALL. PHOTO CASES TO BE MOUNTED ON THE KNOX BOX TO P.I. BLOCKING BOLTED TO THE METAL STUDS.
50. GAS METER LOCATION, RE: P-101.
51. SHELING BY RITE AID, INSTALLED BY C.C.

GENERAL NOTES

- A. FINAL FIXTURE LOCATIONS SHALL BE PER RITE AID APPROVED FIXTURE PLAN.
- B. ALL MILLWORK AND CASEWORK FOR PHARMACY PROVIDED AND INSTALLED BY RITE AID UNLESS OTHERWISE NOTED.
- C. C.C. TO COORDINATE LOCATION OF ANY PLUMBING FIXTURES WITH RITE AID. PHOTO CASES AND PHOTO CASES ARE BY RITE AID UNLESS NOTED OTHERWISE.
- D. ALL FIXTURES ARE BY RITE AID UNLESS NOTED OTHERWISE.
- E. FINAL GRAPHIC LOCATION SHALL PER GRAPHICS PLAN PROVIDED BY DECOR GRAPHICS FABRICATOR.

LEGEND



A3 1/8" = 1'-0" FIXTURES AND GRAPHICS PLAN

A1 1/8" = 1'-0" MEZZANINE

M	1	2	3	4	5	6	7	8	9	10	11	12	13	14	15	16																
M																																
L																																
K																																
J																																
H																																
G																																
F																																
E																																
D																																
C																																
B																																
A																																
	1/8" = 1'-0"	A1	MEZZANINE	A3	1/8" = 1'-0"	FIXTURES AND GRAPHICS PLAN										1/8" = 1'-0"	1	2	3	4	5	6	7	8	9	10	11	12	13	14	15	16