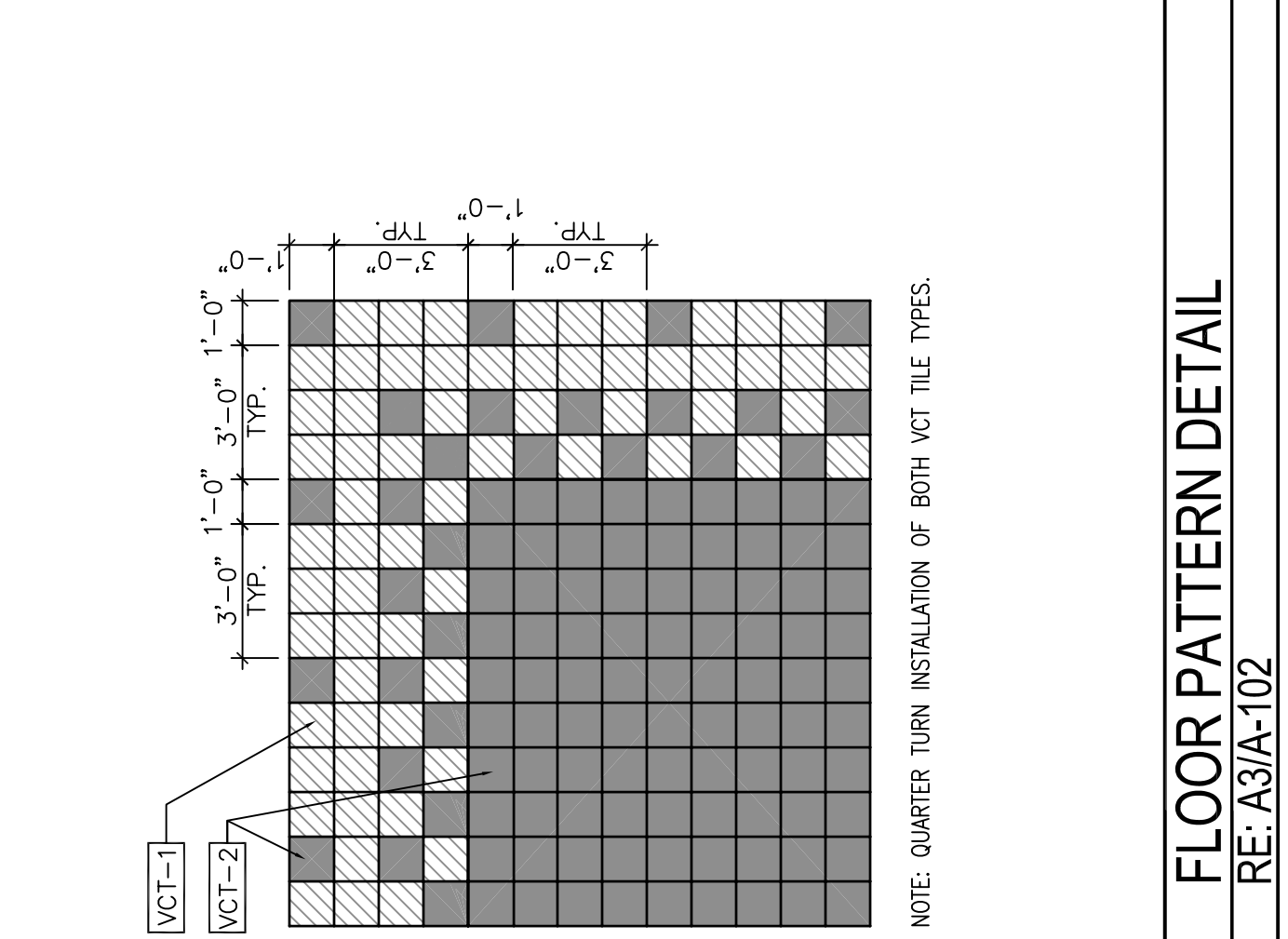
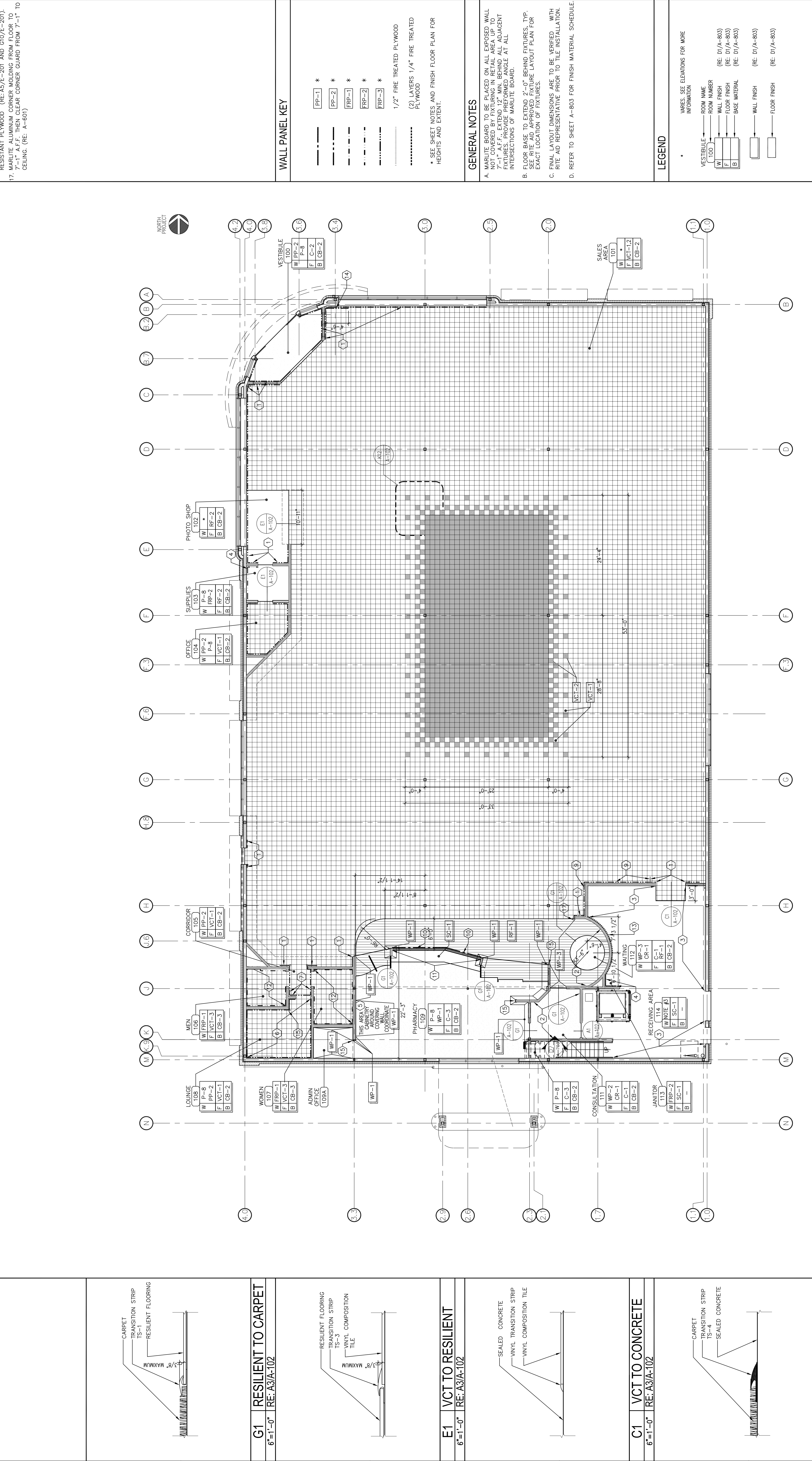
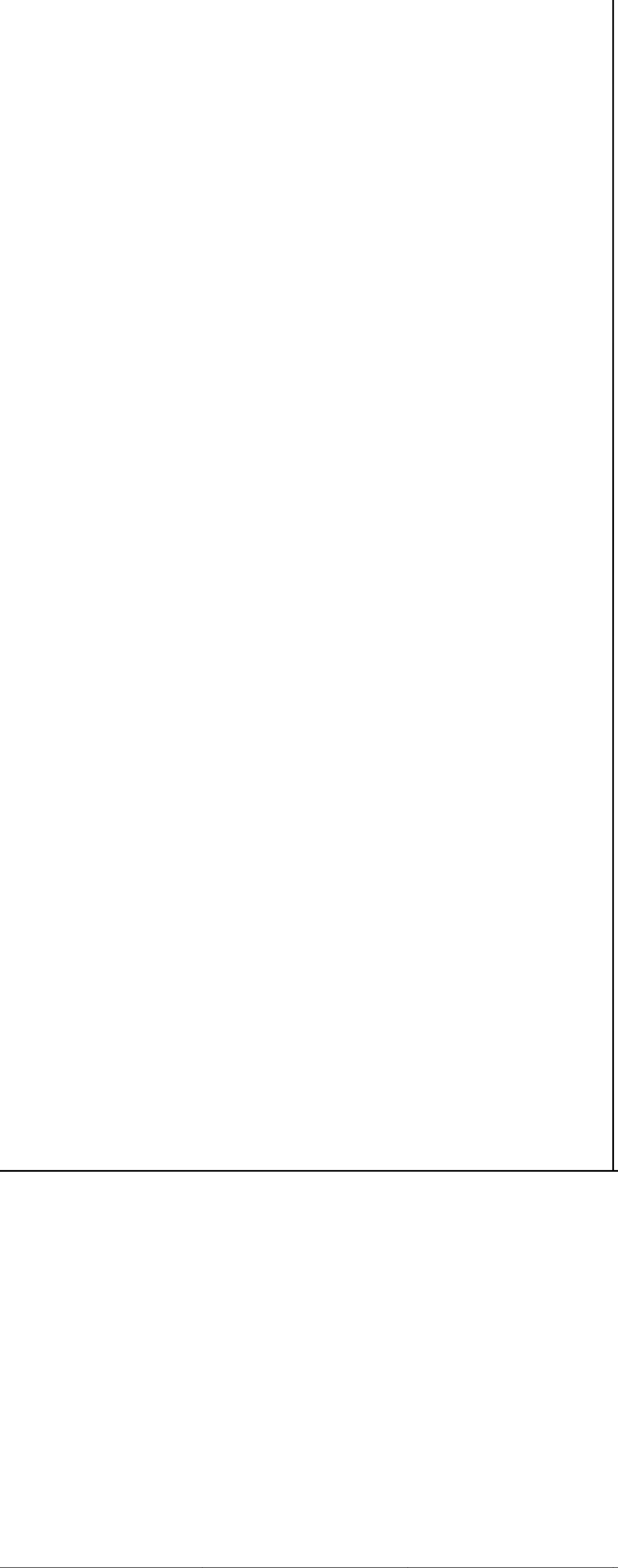
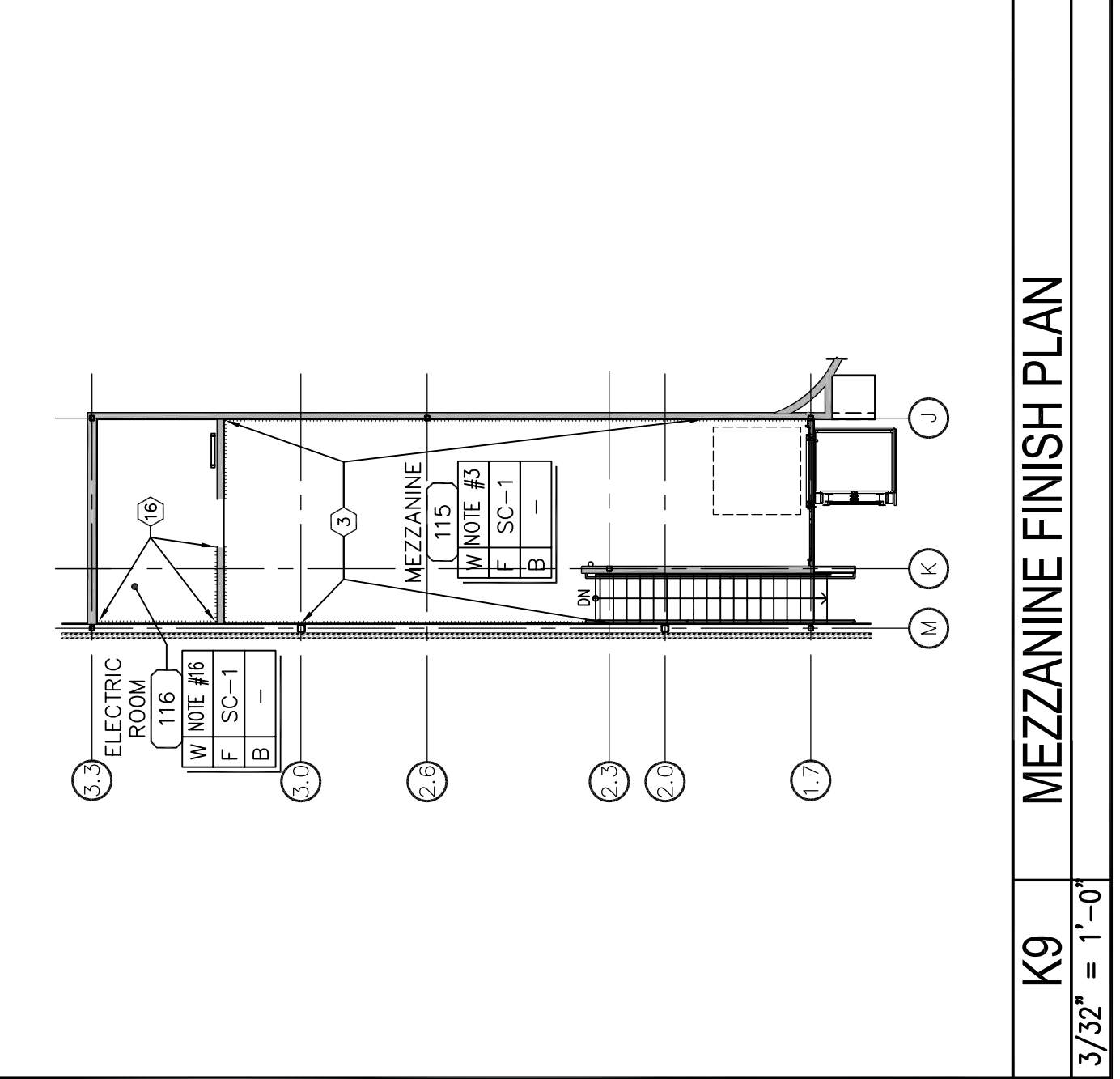


- SHEET NOTES**
- PP-2 FROM FLOOR TO 7'-1" A.F.F. OR UNDER SIDE OF WINDOW (RE: A-601).
 - PROVIDE CHAIR RAIL [CE-1] RE: A-803.
 - 4'-0" HIGH WANSKOT OF 1/2" FIRE TREATED PLYWOOD SUPPLIED BY RITE AID AND INSTALLED BY THE G.C.
 - TRIM 2 FROM FLOOR TO 5'-0" A.F.F. CAP WITH MARBLITE CABINETRY THIS AREA.
 - PP-2 WANSKOT WITH A 2" MCGUE RASPBERRY BUMPER MOUNTED AT 32" O.C. A.F.F. THE WALLS ABOVE THE WANSKOT ARE PAINTED P-8 (SEMI-GLOSS EMAMEL). SUPPLIED BY RITE AID AND INSTALLED BY THE G.C.
 - PP-2 FROM FLOOR TO CEILING.
 - FRP-3 FROM FLOOR TO 7'-1" A.F.F.
 - OR UNDERSIDE OF WINDOW WALL CAP (RE: A-601).
 - PP-2 FROM 12" BELOW TOP OF STORE FIXTURE TO UNDERSIDE OF SOFFIT ABOVE (RE: K1/A-601).
 - PP-1 FROM FLOOR TO UNDERSIDE OF PHARMACY WINDOW (RE: A-102).
 - PP-1 FROM FLOOR TO UNDERSIDE OF PHARMACY WINDOW BUMPER SUPPLIED BY RITE AID AND INSTALLED BY G.C. (RE: A13/A-701 & K1/A-601).
 - WP-1 FROM 30" A.F.F. TO WINDOW SILL (RE: G7 / A-603).
 - FRP-1 FROM FINISH FLOOR TO CEILING.
 - 4'-0" HIGH WANSKOT OF (2) LAYERS OF 1/2" FIRE TREATED PLYWOOD AT WAITING AREA CURVED WALL ONLY.
 - 2" MCGUE BUMPER RASPBERRY AT CART BACK WALL MOUNTED 4" A.F.F. PROVIDED BY RITE AID AND SUPPLIED BY RITE AID AND INSTALLED BY THE G.C. SEE SCHEDULE WP-1.
 - SEE GUARD REF. FINISH MATERIAL SCHEDULE WP-1.
 - TELEPHONE SECURITY BACKER BOARD, 3/4" FIRE RESISTANT PLYWOOD (RE: A5/E-201 AND G10/E-201).
 - MARBLITE ALUMINUM CORNER MOLDING FROM FLOOR TO 7'-1" A.F.F. THEN CLEAR CORNER GUARD FROM 7'-1" TO CEILING. (RE: A-601)



K12 FLOOR PATTERN DETAIL
1/4" = 1'-0"
RE: A3/A-102



K12 FLOOR PATTERN DETAIL
1/4" = 1'-0"
RE: A3/A-102

K9 MEZZANINE FINISH PLAN
3/32" = 1'-0"

A3 FLOOR FINISH PLAN
1/8" = 1'-0"
RE: A3/A-102