

RITE AID CORPORATION
30 HUNTER LANE
CAMP HILL, PA 17011
(717) 761-2633

BRUCE
ROMANNE
HAMILTON
ARCHITECTS

INTERIOR DESIGN
LANDSCAPE ARCHITECTURE
VISUALIZATION
PERMITS
NEW HAMPSHIRE 03071

WASHINGTON & ALLEN AVENUE
PORTLAND, MAINE
RITE AID STORE #4122



ISSUED FOR BUILDING PERMIT/CB/ORDS
REVISIONS
Date: 10-27-06
Title: 0525

GENERAL INFORMATION
Sheet No.: A-001

Table with columns: SHEET #, SHEET TITLE, CURRENT ISSUE DATE

Table with columns: VENDOR, COMPANY, PRODUCT TYPE, CONTACT, CONTACT NUMBER

Table with columns: G13, G14, G15, G16, GENERAL NOTES

Table with columns: D13, D14, D15, D16, SYMBOLS LEGEND

1. THERE ARE TO BE NO CHANGES IN THE FOLLOWING SET OF CONSTRUCTION DRAWINGS AND SPECIFICATIONS UNLESS APPROVED IN WRITING BY RITE AID CORPORATION...

2. CHANGES AS STATED ABOVE WOULD INCLUDE ANY VARIATION OF MATERIALS, PRODUCTS, FINISHES OR METHODS OF CONSTRUCTION...

3. DRAWINGS DO NOT TAKE PRECEDENCE OVER SPECIFICATIONS. ANY CONFLICTS BETWEEN OR WITHIN THE DRAWINGS OR SPECIFICATIONS SHALL BE RESOLVED BY THE ARCHITECT...

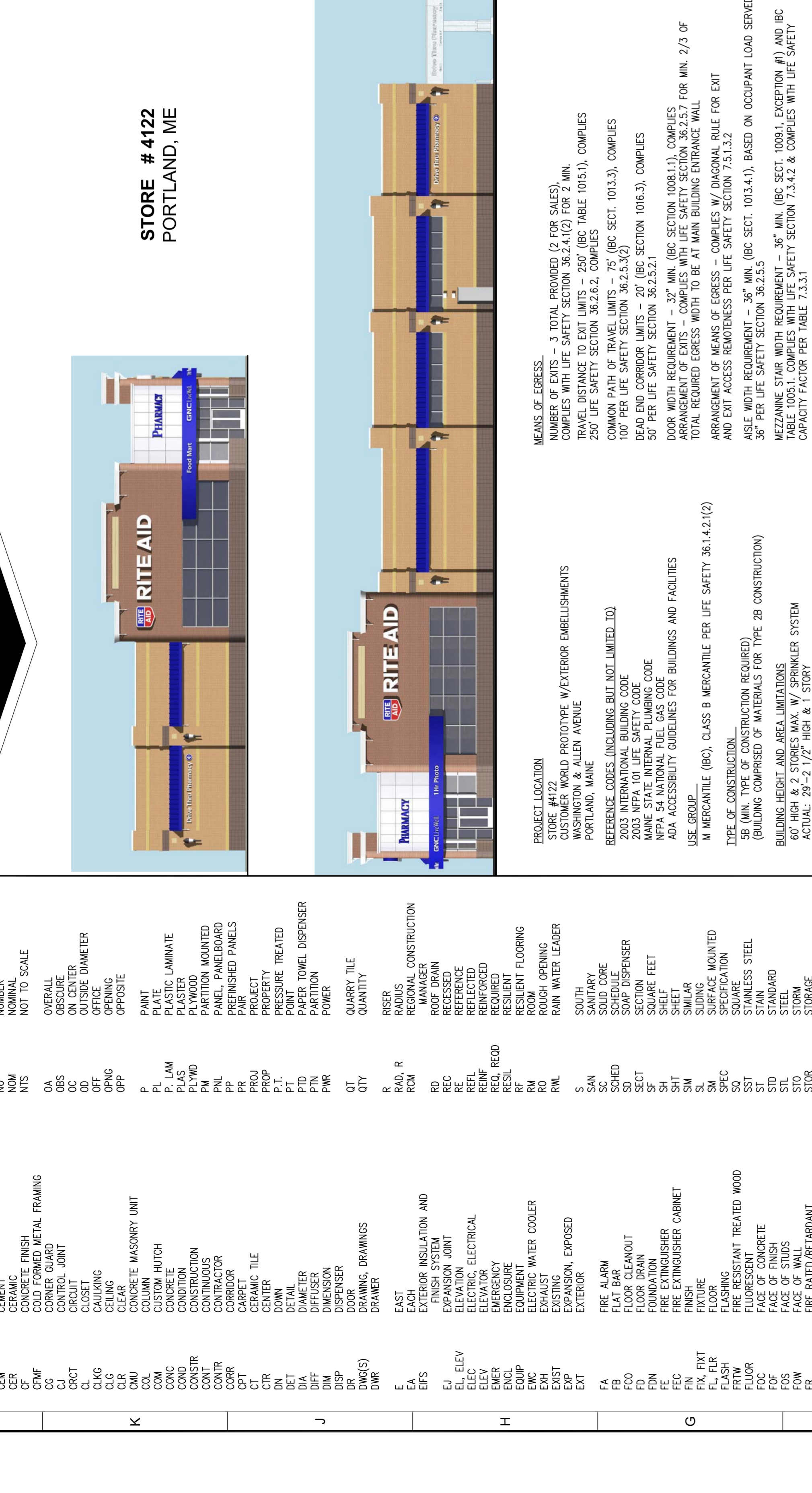
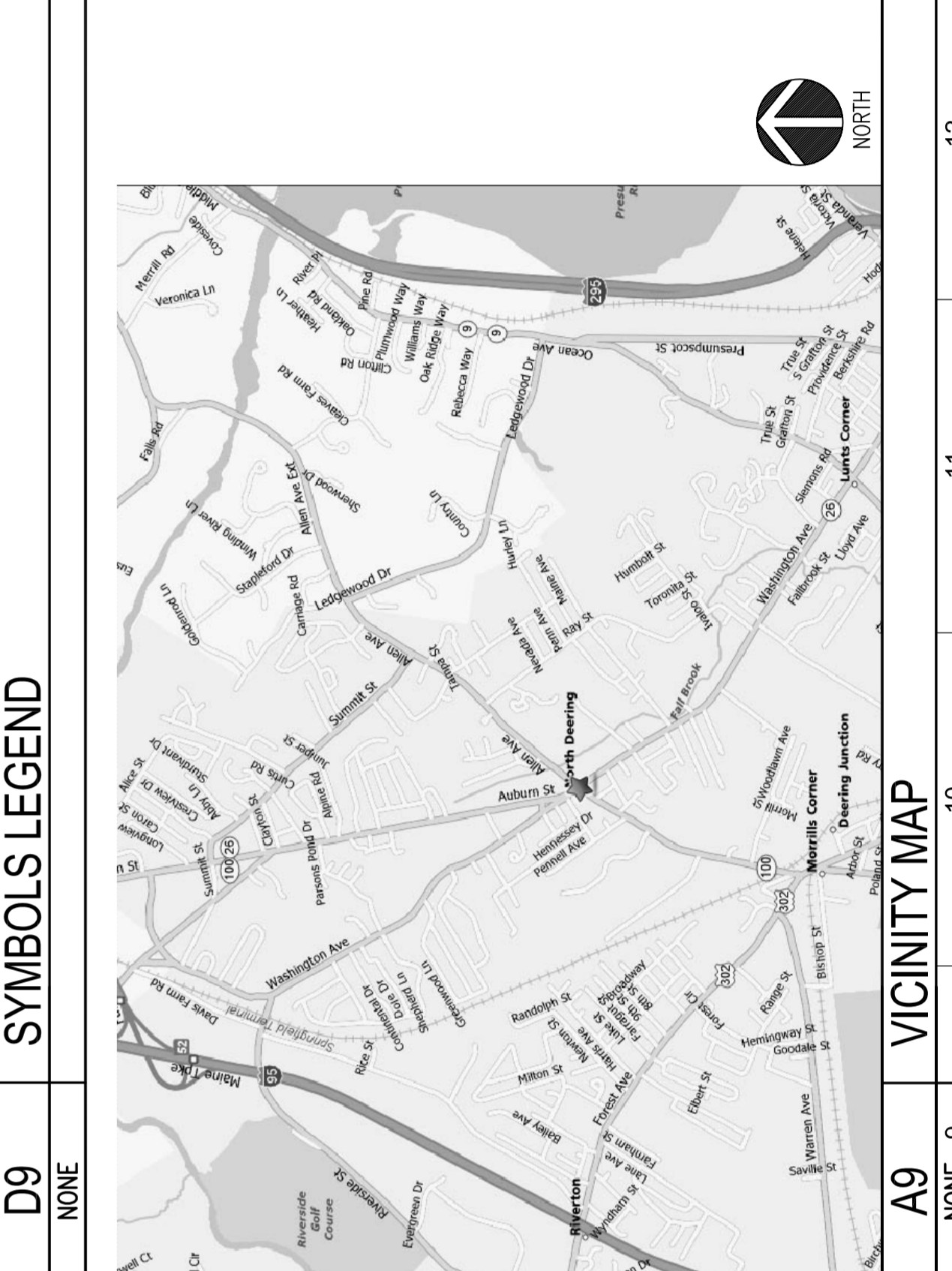


Table with columns: A1, A2, A3, A4, A5, CODE DATA

Table with columns: D5, D6, D7, D8, D9, A9, A13, A14, A15, A16, ABBREVIATIONS