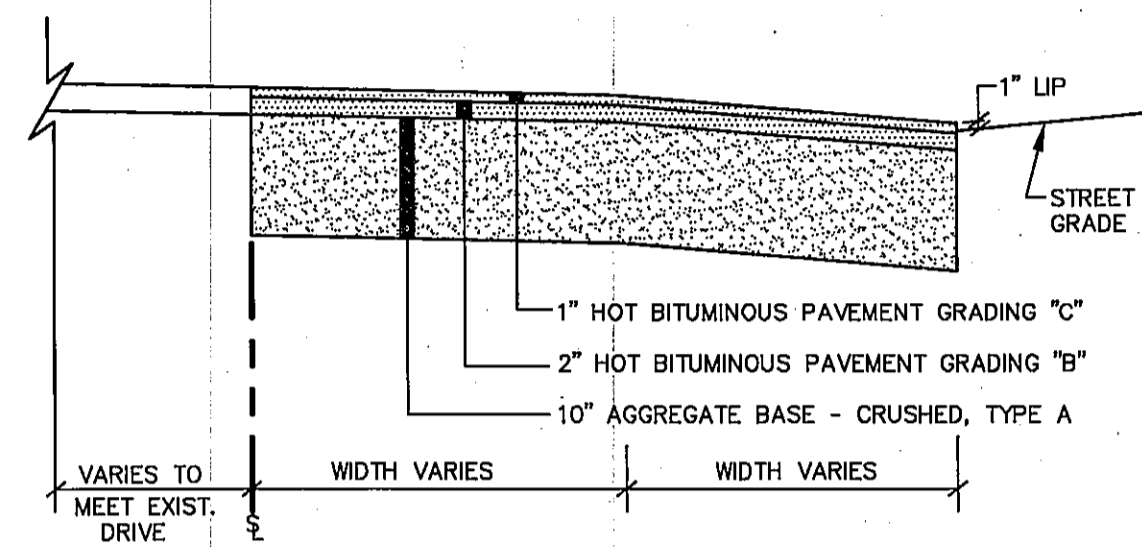
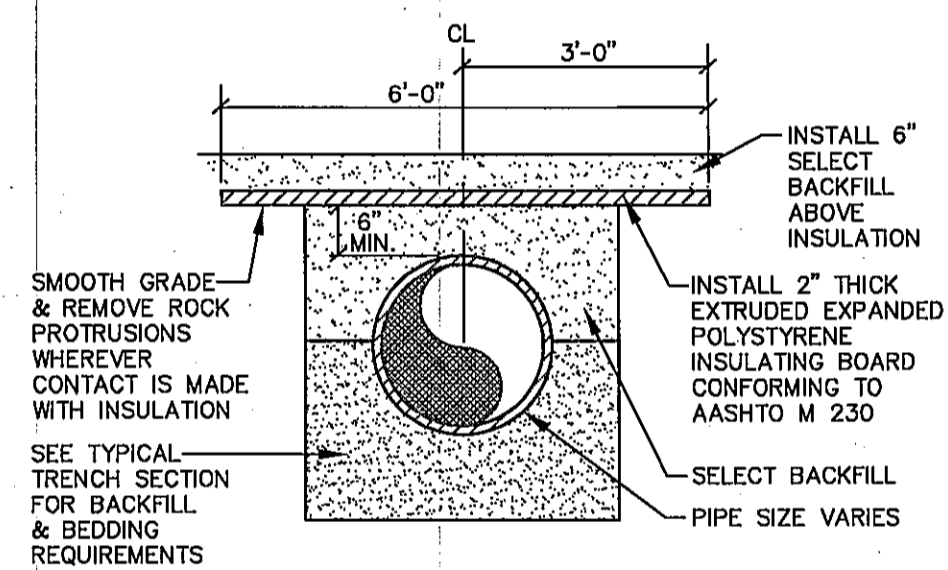


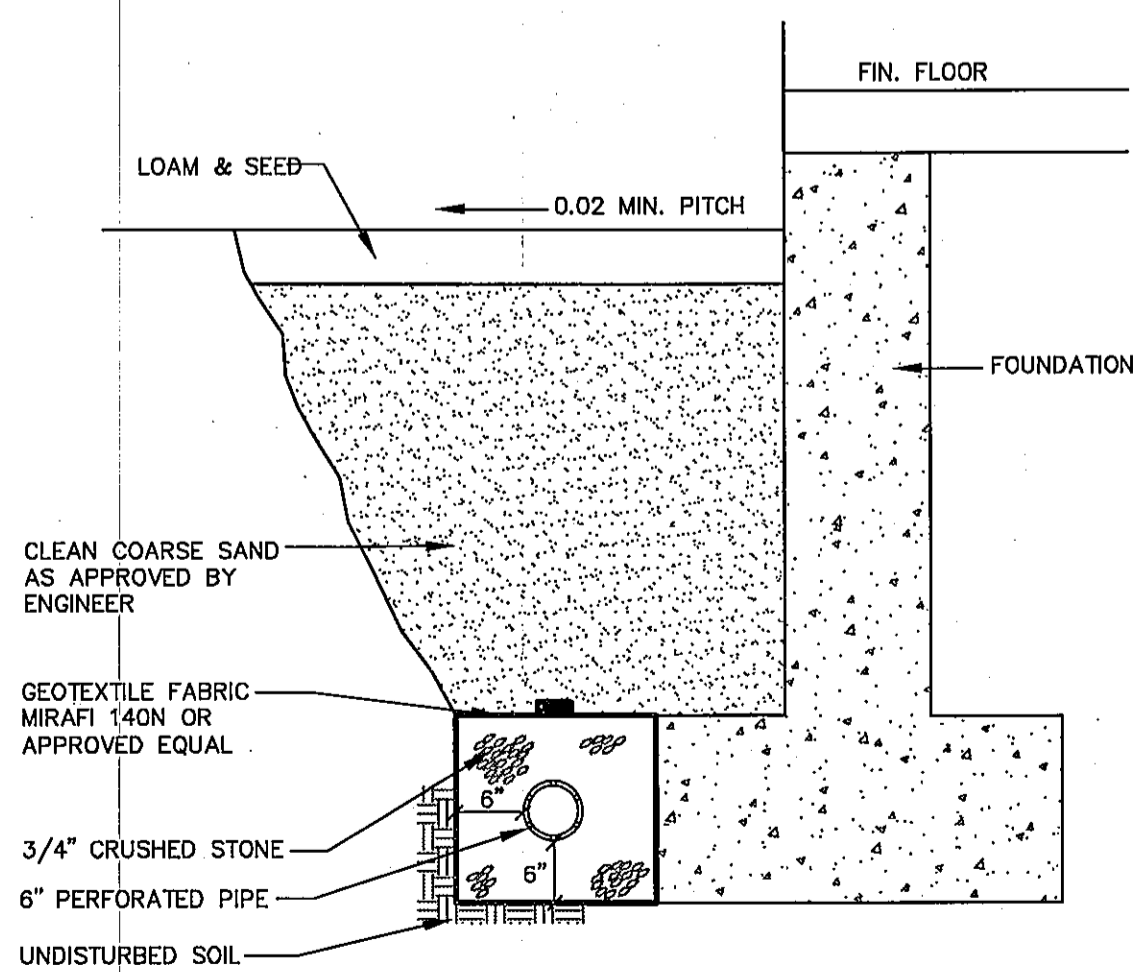
TYPICAL PAVEMENT JOINT
NOT TO SCALE



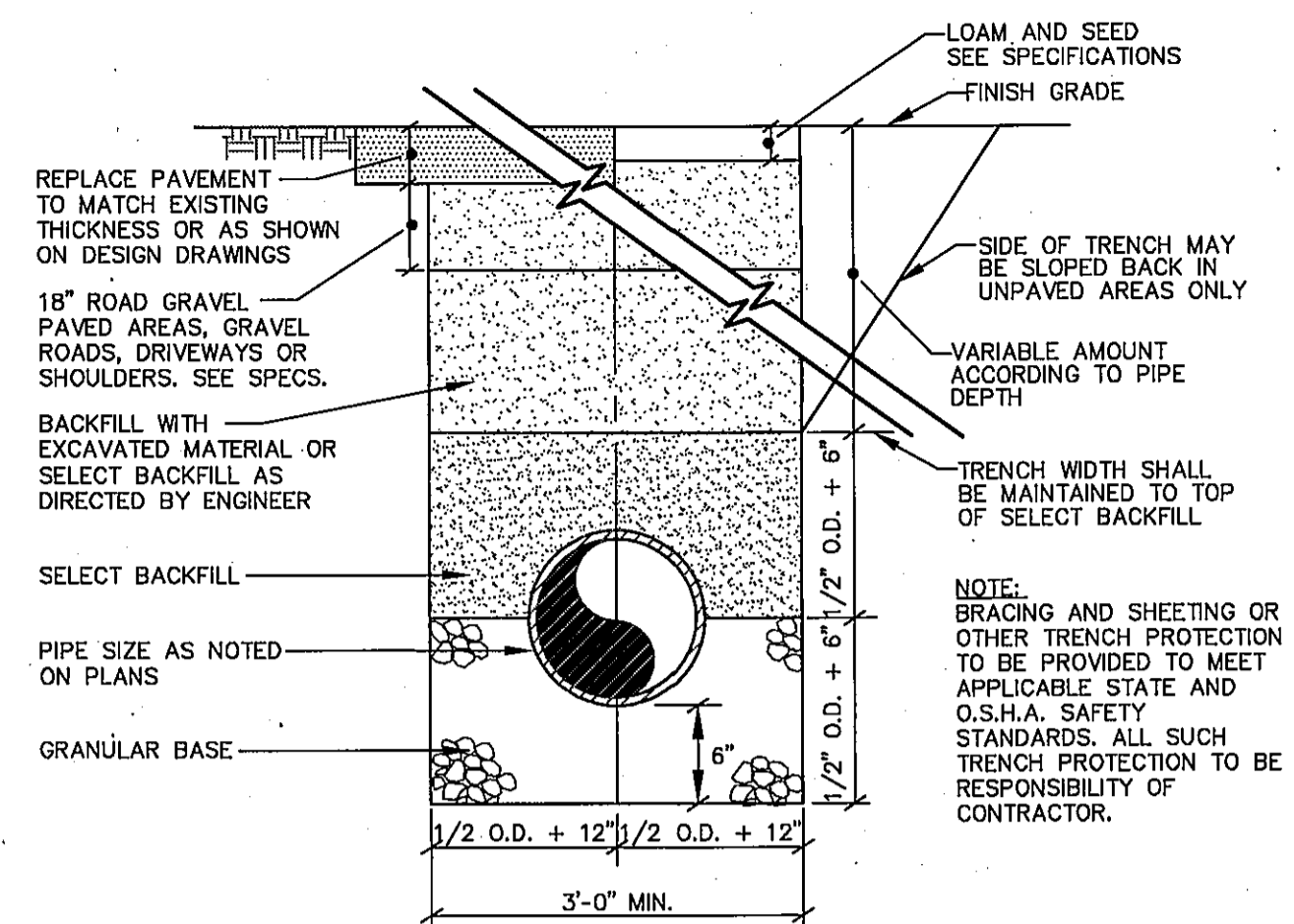
BITUMINOUS DRIVEWAY CONSTRUCTION
NOT TO SCALE



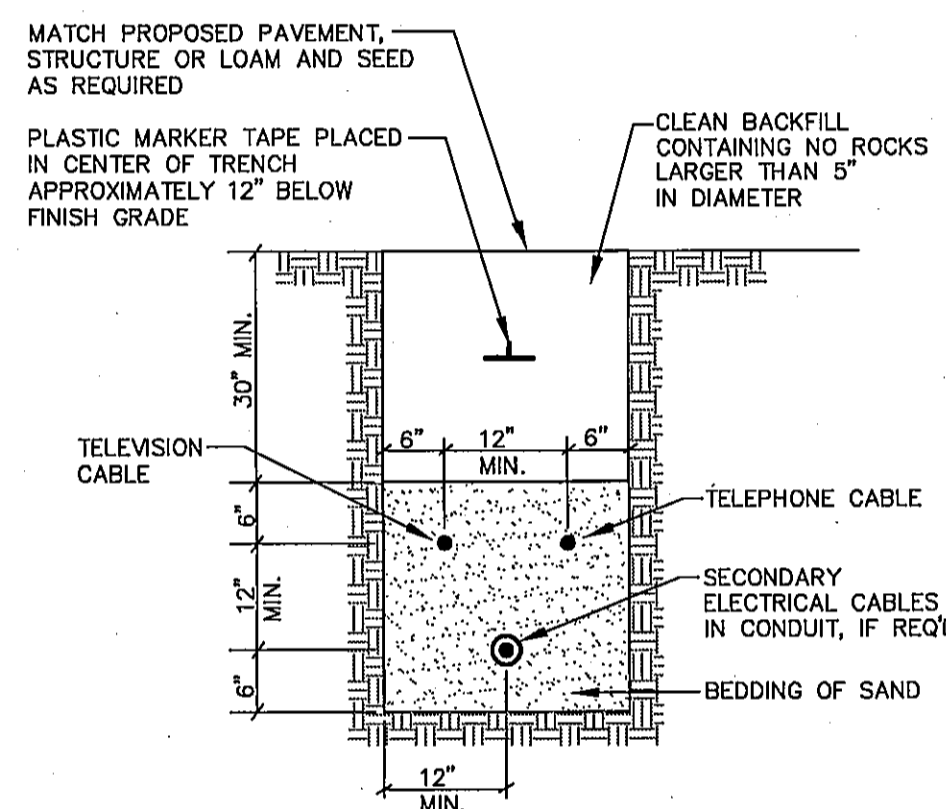
PIPE INSULATION DETAIL
NOT TO SCALE



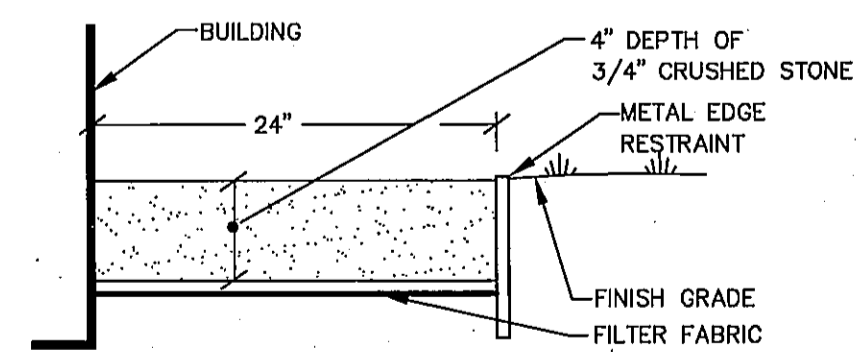
TYP. FOUNDATION DRAIN SECTION
NOT TO SCALE



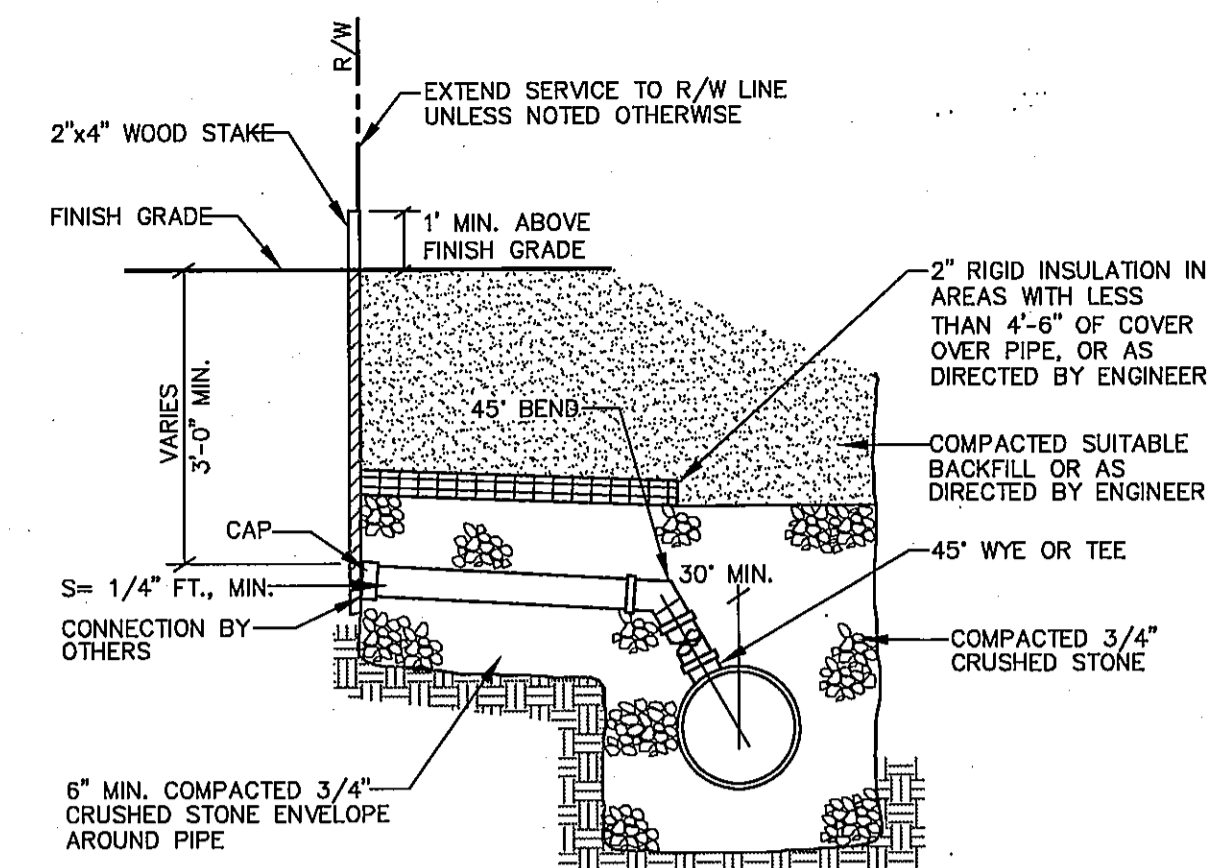
TRENCH SECTION
NOT TO SCALE



TYPICAL UNDERGROUND CABLE INSTALLATION
NOT TO SCALE

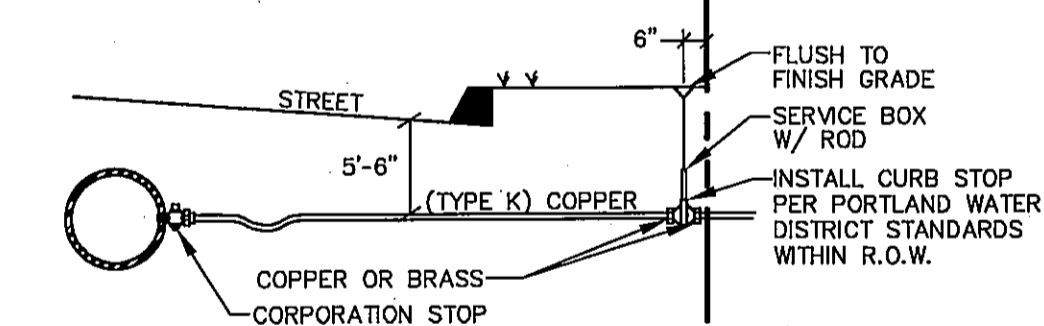
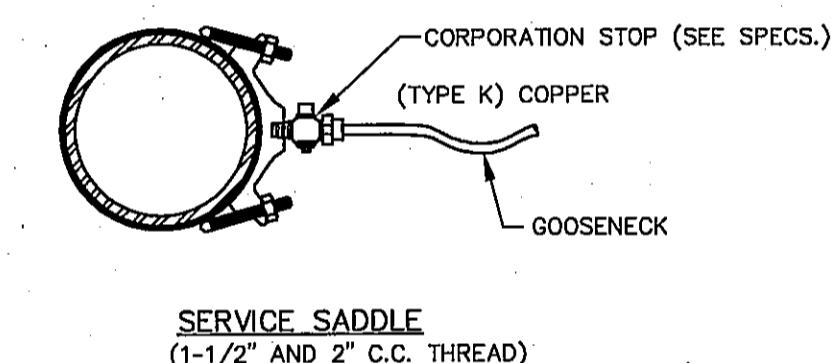
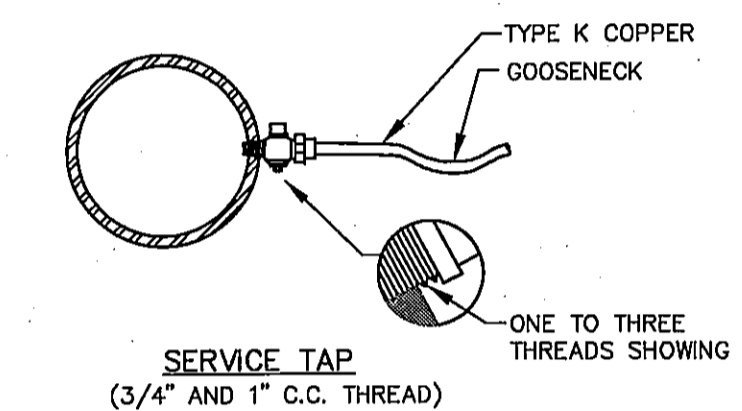


STONE DRIP EDGE
NOT TO SCALE

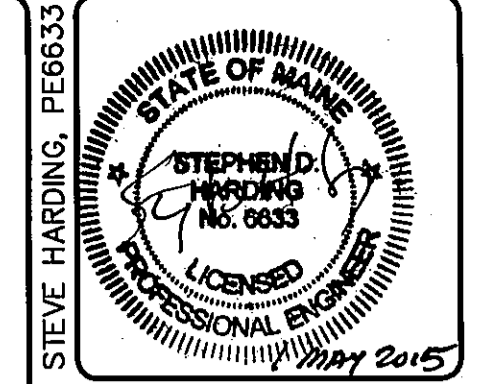


- NOTES:**
1. PIPE DIAMETERS MAY VARY, SEE TYPICAL PIPE TRENCH DETAIL, THIS SHEET.
 2. WHERE 30° MINIMUM ANGLE BETWEEN SEWER CONNECTION AT THE SEWER MAIN AND THE VERTICAL CANNOT BE MAINTAINED, PROVIDE A PRECAST SEWER CHIMNEY.
 3. IF STAKE IS CUT OFF FLUSH OR SLIGHTLY BELOW GRADE, PROVIDE MIN. OF TWO 16d GALV. SPIKES DRIVEN INTO TOP OF 2" x 4" TO PROVIDE METAL DETECTABILITY.

HORIZONTAL SANITARY & STORM DRAIN CONNECTION
NOT TO SCALE



TYPICAL SERVICE CONNECTION
NOT TO SCALE



DESIGNED	CHECKED
SDH	SDH

B	MVE	5-1-15	REVISED PER REVIEW COMMENTS
A	MVE	04-14-15	ISSUED FOR CLIENT REVIEW
REV. BY:	DATE:	STATUS:	

THIS PLAN SHALL NOT BE USED WITHOUT WRITTEN PERMISSION FROM SEBAGO TECHNICS, INC. ANY ALTERATIONS AUTHORIZED OR OTHERWISE, SHALL BE AT THE USER'S SOLE RISK AND WITHOUT LIABILITY TO SEBAGO TECHNICS, INC.

SEBAGO TECHNICS
WWW.SEBAGOTECHNICS.COM
75 John Roberts Rd., Suite B
South Portland, ME 04106
Tel: 207-237-2100 Fax: 207-735-9556

DETAILS
OF: **LOT 2**
419 ALLEN AVENUE
PORTLAND, MAINE
FOR: **ESTES CUSTOM BUILDERS**
733 ROOSEVELT TRAIL
WINNHAM, MAINE 04092

PROJECT NO.	SCALE
15098	NONE