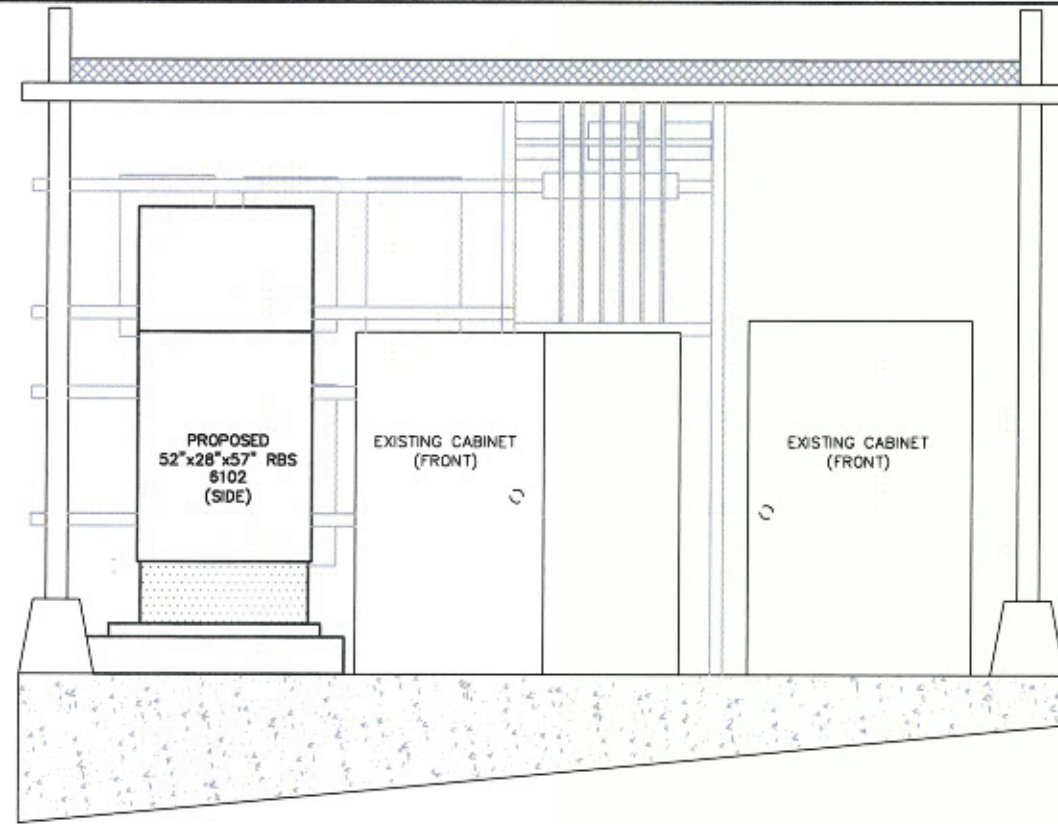


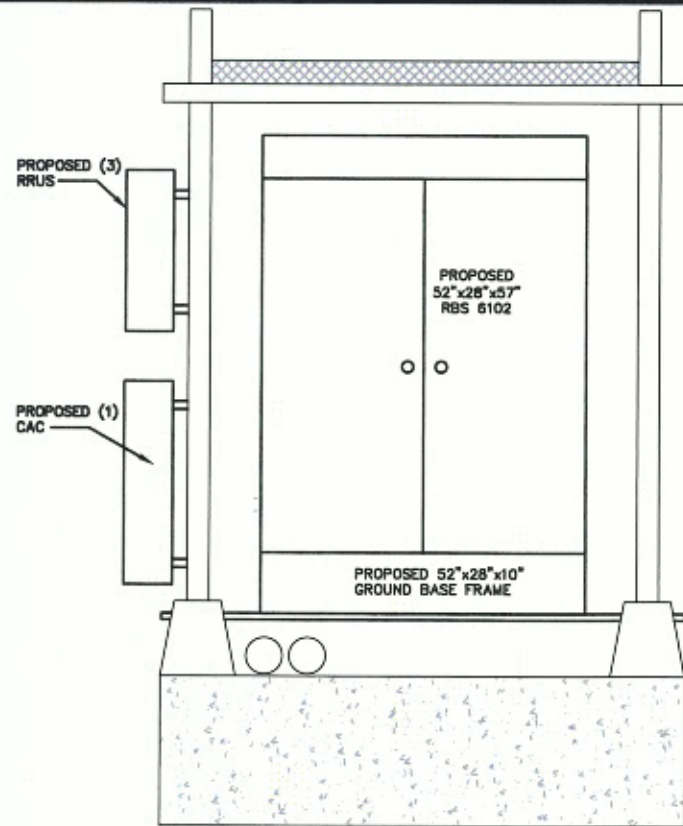
**EQUIPMENT LAYOUT**

SCALE: N.T.S.



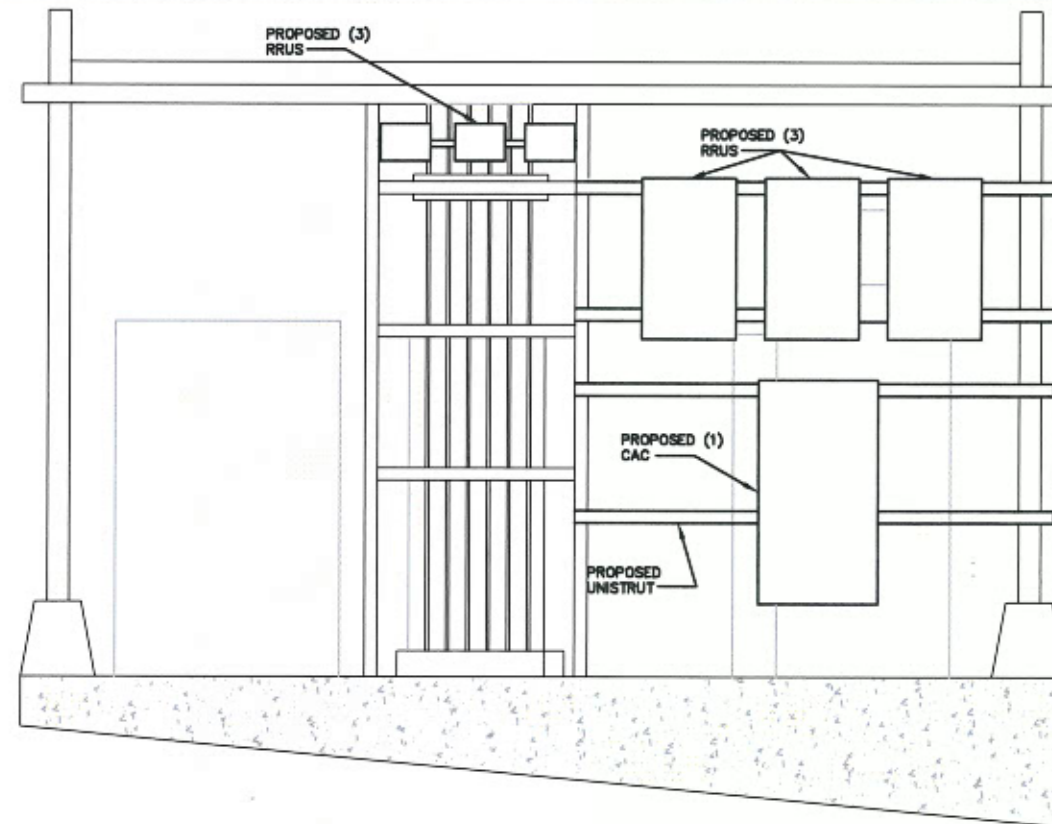
**A CABINET ELEVATION FRONT**

SCALE: N.T.S.



**B CABINET ELEVATION BACK**

SCALE: N.T.S.



**C CABINET ELEVATION BACK**

SCALE: N.T.S.

PLANS PREPARED FOR:

**U S Cellular**  
 We connect with you  
 10 Corporate Drive, Suite 210, Bedford, NH 03110

PROJECT INFORMATION

**853408-NORTH DEERING**  
 1335 WASHINGTON AVE  
 PORTLAND, ME 04103  
 (CUMBERLAND COUNTY)

PLANS PREPARED BY:

**amec**

511 Congress Street Suite 200, Portland ME 04101  
 P: (207) 775-5401 F: (207) 772-4782 www.amec.com

PROJECT COORDINATION & MANAGEMENT:

**KJK Wireless, LLC**  
 127 Ridge Road, Nashua, NH 03062  
 Phone: (603) 888-8974

SEAL



REV	DATE	ISSUED FOR
△	5/23/13	ISSUED FOR CONSTRUCTION

PROJECT NO: 3618138235

DRAWN BY: CBM

RELEASED BY: MSD

SHEET TITLE

**EQUIPMENT LAYOUT  
 PLAN AND  
 ELEVATIONS**

SHEET NUMBER

**C-1**

REVISION:

**0**