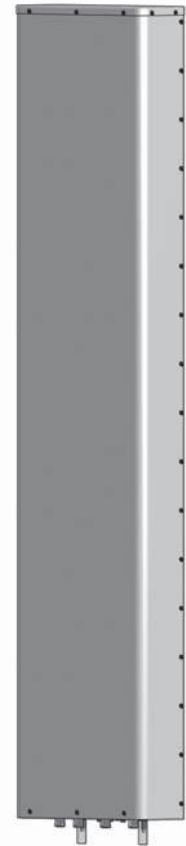


HT4C6318x000

Twin Band | Panel Antenna | 2x X-Pol | 63° / 63° | 18.0 / 18.0 dBi | Variable Tilt

- Twin band, 2x X-Pol (Quad-Pol), variable tilt, panel antenna
- Patented internal RET actuator adds no additional length to the antenna


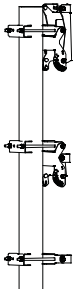
| Ordering Options | | Model Number | |
|--|--|---|----------------------|
| When ordering, replace "x" in the model number with one of the options listed below. | | | |
| Manual Electrical Tilt | | HT4C6318M000 | |
| Remote Electrical Tilt AISG v1.1 | | HT4C6318R000 | |
| Remote Electrical Tilt AISG v2.0 / 3GPP | | HT4C6318R000G | |
| Mounting bracket kits and other accessories are ordered separately. | | | |
| Electrical Characteristics | | 2 x 696-900 MHz | |
| Frequency Bands | | 696-806 MHz | 806-900 MHz |
| Polarization | | 2 x ±45° (Quad-Pol) | |
| Horizontal Beamwidth | | 65° | 63° |
| Vertical Beamwidth | | 9.5° | 10.5° |
| Gain | | 15.4 dBd (17.5 dBi) | 15.9 dBd (18.0 dBi) |
| Electrical Downtilt | | 0-10° | |
| Impedance | | 50Ω | |
| VSWR | | ≤ 1.5:1 | |
| Upper Sidelobe Suppression | | > 16 dB | > 16 dB |
| Front-to-Back Ratio | | > 25 dB | > 25 dB |
| Isolation Between Ports | | > 25 dB | > 25 dB |
| IM3 (2x20W carrier) | | -150 dBc | -150 dBc |
| Input Power | | 500 W | |
| Total Number of Connectors | | Antennas has 4 connectors located at the bottom | |
| Connectors Per Band, Type, Location | 696-900 MHz | 2 Connectors / 7/16-DIN Female / Bottom | |
| | 696-900 MHz | 2 Connectors / 7/16-DIN Female / Bottom | |
| Lightning Protection | | Direct Ground | |
| Operating Temperature | | -40° to +60° C (-40° to +140° F) | |
| Mechanical Characteristics | | | |
| Dimensions (Length x Width x Depth) | | 2411 x 520 x 180 mm | 94.9 x 20.5 x 7.1 in |
| Depth with Z-Brackets | | 227 mm | 8.9 in |
| Weight | Antenna Only | 31.3 kg | 69.0 lbs |
| | Antenna with Mounting Bracket Kit 36210008 | 38.2 kg | 84.2 lbs |
| Survival Wind Speed | | > 201 km/hr | > 125 mph |
| Wind Loads (160 km/hr or 100 mph) | Front | 1546 N | 348 lbf |
| | Side | 551 N | 124 lbf |



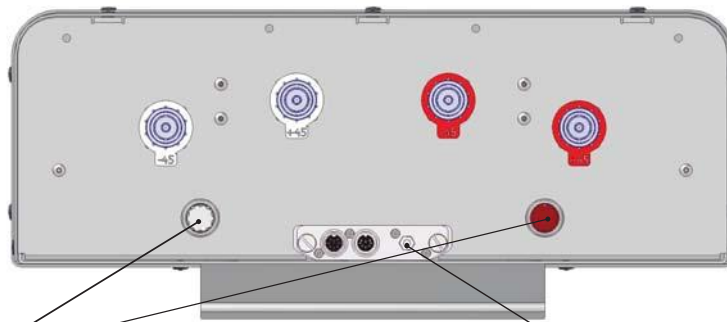
Quoted performance parameters are provided to offer typical, peak or range values only and may vary as a result of normal testing, manufacturing and operational conditions. Extreme operational conditions and/or stress on structural supports is beyond our control. Such conditions may result in damage to this product. Improvements to products may be made without notice.

HT4C6318x000

Twin Band | Panel Antenna | 2x X-Pol | 63° / 63° | 18.0 / 18.0 dBi | Variable Tilt


| Electrical Downtilt Control | | | | |
|--|--|--|------------------------------------|-----------------|
| Electrical downtilt for each band can be controlled separately. Tilt indicator(s) are covered by removable transparent cap(s). | | | | |
| Manual Electrical Tilt (MET) Control | A colored knob at the end of the tilt indicator allows change of the tilt without need of a tool. The knob color is identical to the corresponding connector ring color. To access the knob, remove the cap by turning it counter-clockwise. It is re-installed by opposite rotation. Do not remove the transparent cap(s) from the antenna. | | | |
| Remote Electrical Tilt (RET) Control | The remote control of the electrical tilt is managed by a Multi-Device Control Unit (MDCU) inserted in the bottom of the antenna. A single module individually controls the tilt of each band (no need for daisy chain cables between the bands). This module does not add any additional length to the antenna. For RET control, the transparent caps must be in place and locked. The tilt angle indicators always remain visible and the antenna still has manual tilt control (manual override). | | | |
| RET Module | The RET module is factory installed and does not need to be ordered separately. | | | |
| | Part Number for AISG v1.1 protocol: | MDCU-A0000 | One unit installed in HT4C6318R000 | |
| | Part Number for 3GPP/AISG v2.0 protocol: | MDCU-G0000 | One unit installed in HT4C6318R00G | |
| Important Installation Instructions  | In order to operate RET control, the transparent caps covering the tilt adjustment indicators must be engaged and locked. Do not cut them from the antenna. | | | |
| | Do not install the antenna with the connectors facing upward. | | | |
| Mounting Options | Part Number | Image | Fits Pipe Diameter | Weight |
| All mounting bracket kits are ordered separately unless otherwise indicated. Select from the options listed below. | | | | |
| 3-Point Mounting and Downtilt Bracket Kit | 36210008 |  | 40-115 mm 1.6-4.5 in | 6.9 kg 15.2 lbs |

Bottom View of Antenna



Tilt indicators covered by transparent caps. Manual adjustment is accessed by removing the caps. Knob colors are the same as the connectors.

Location of the MDCU for RET Control

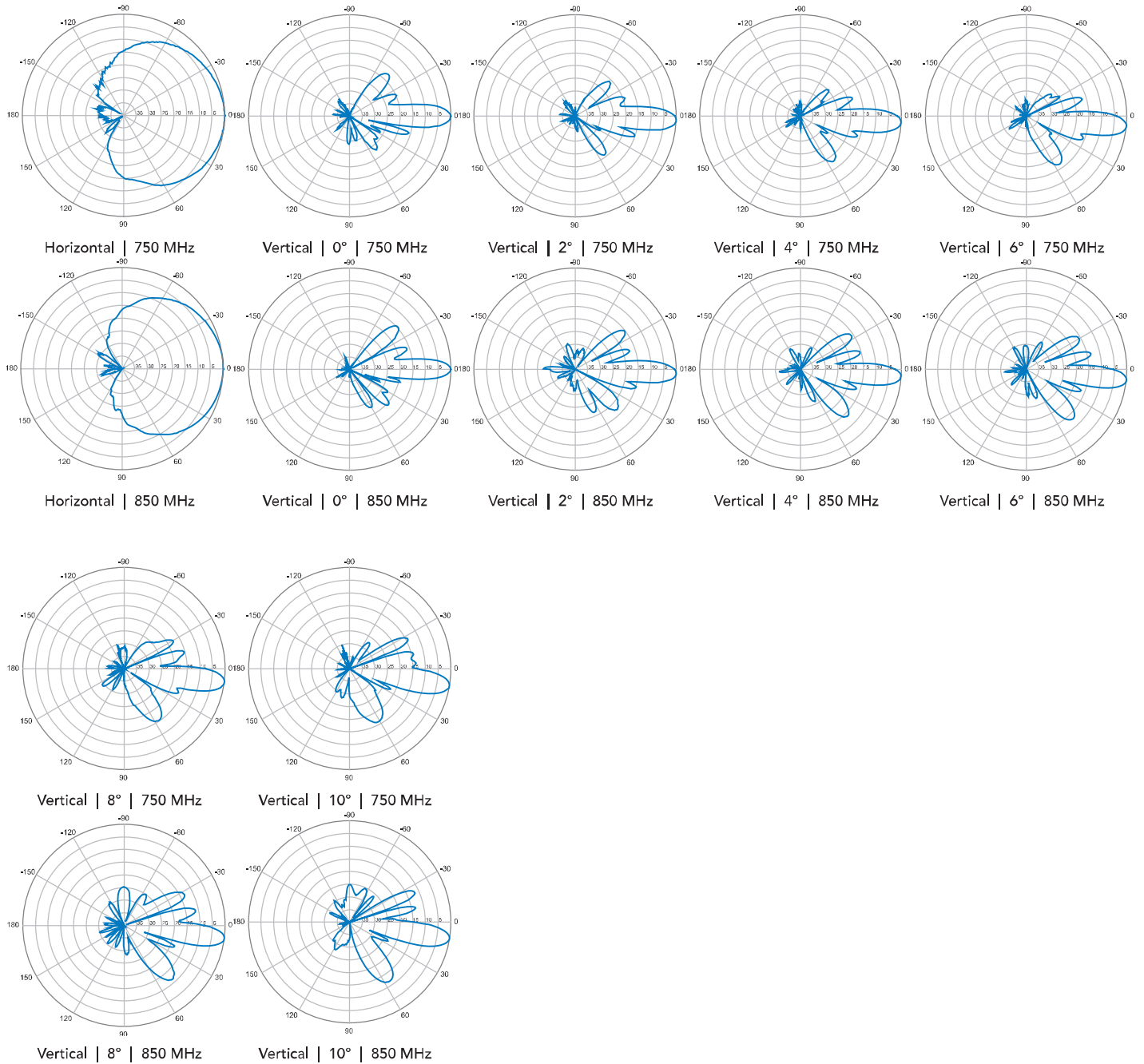


In order to operate RET control, the transparent caps covering the tilt adjustment indicators must be engaged and locked. Do not cut them from the antenna.

Quoted performance parameters are provided to offer typical, peak or range values only and may vary as a result of normal testing, manufacturing and operational conditions. Extreme operational conditions and/or stress on structural supports is beyond our control. Such conditions may result in damage to this product. Improvements to products may be made without notice.

HT4C6318x000

Twin Band | Panel Antenna | 2x X-Pol | 63° / 63° | 18.0 / 18.0 dBi | Variable Tilt



Quoted performance parameters are provided to offer typical, peak or range values only and may vary as a result of normal testing, manufacturing and operational conditions. Extreme operational conditions and/or stress on structural supports is beyond our control. Such conditions may result in damage to this product. Improvements to products may be made without notice.