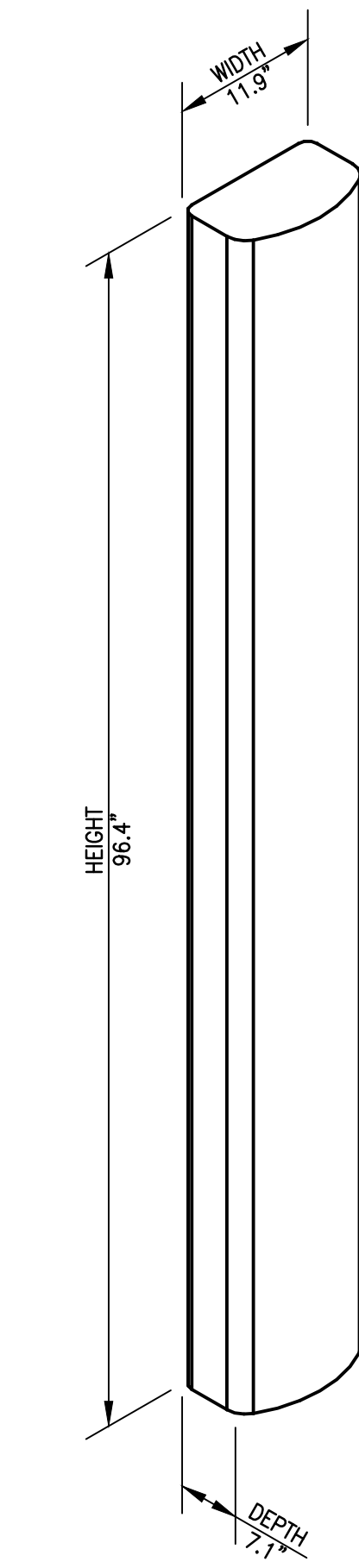


ANTENNA PLAN

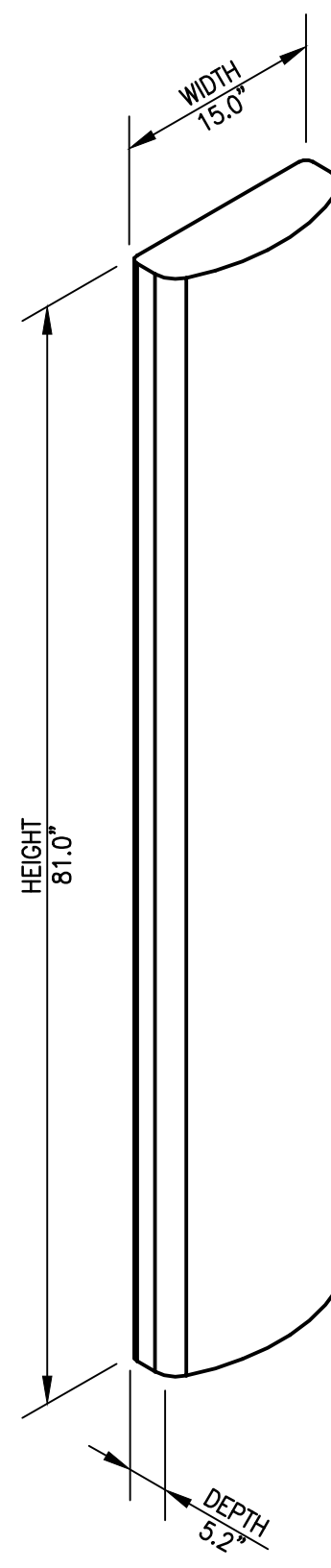
SCALE: 1/2" = 1'-0"

0 1' 2' 4' 6'

1
Z-2



PANEL ANTENNA
DIMENSIONS: 96.4"H x 11.9"W x 7.1"D
2 PER SECTOR, TOTAL OF 6

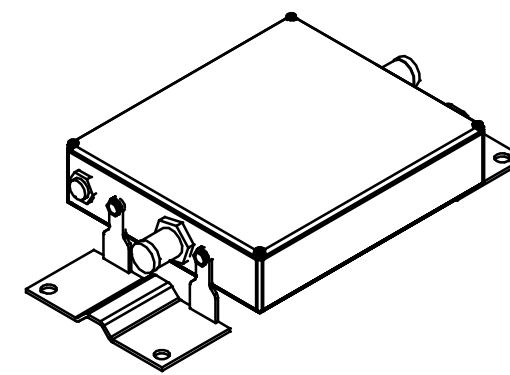


PANEL ANTENNA
DIMENSIONS: 81.0"H x 15.0"W x 5.2"D
1 PER SECTOR, TOTAL OF 3

ANTENNA DETAILS

SCALE: N.T.S.

2
Z-2

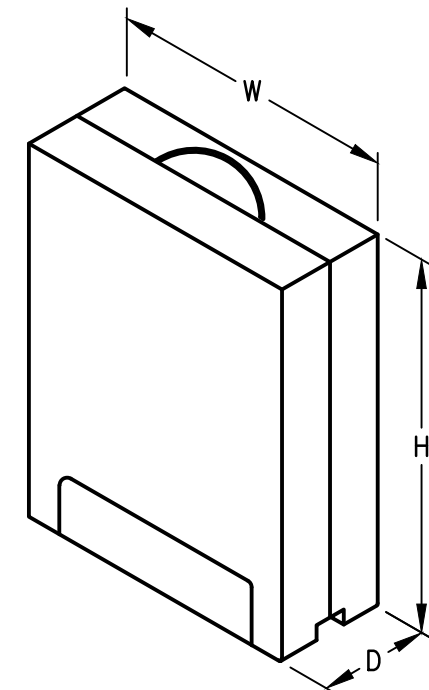


TMA 17/21
DIMENSIONS: 7.7"H x 7.5"W x 3.4"D
WEIGHT: 11.0 LBS
2 PER SECTOR, TOTAL OF 6

TMA DETAILS

SCALE: N.T.S.

3
Z-2

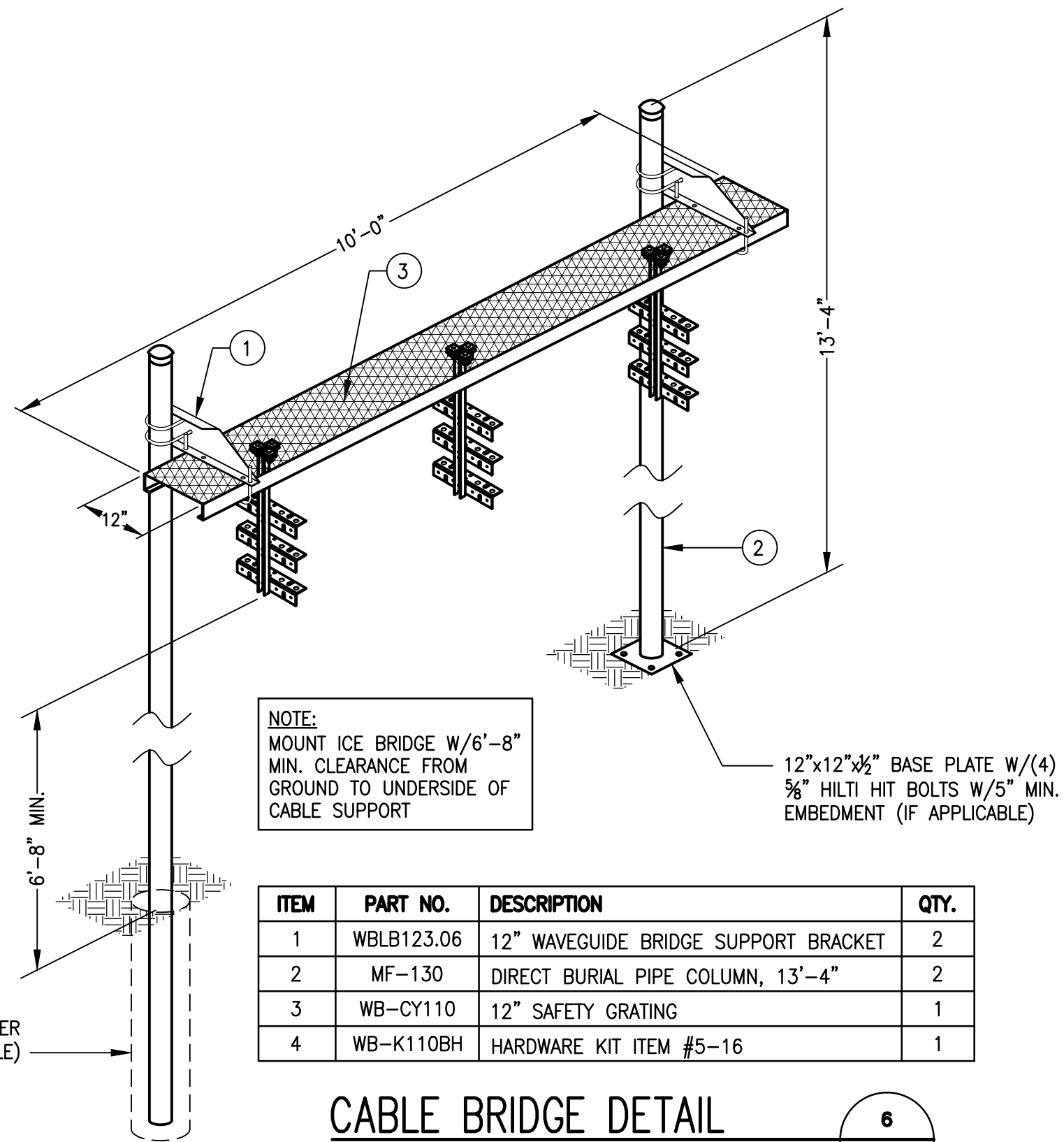


RRU-11
DIMENSIONS: 20.0"H x 17"W x 7"D
WEIGHT: 50.7 LBS
1 PER SECTOR, TOTAL OF 3

RRU DETAILS

SCALE: N.T.S.

4
Z-2



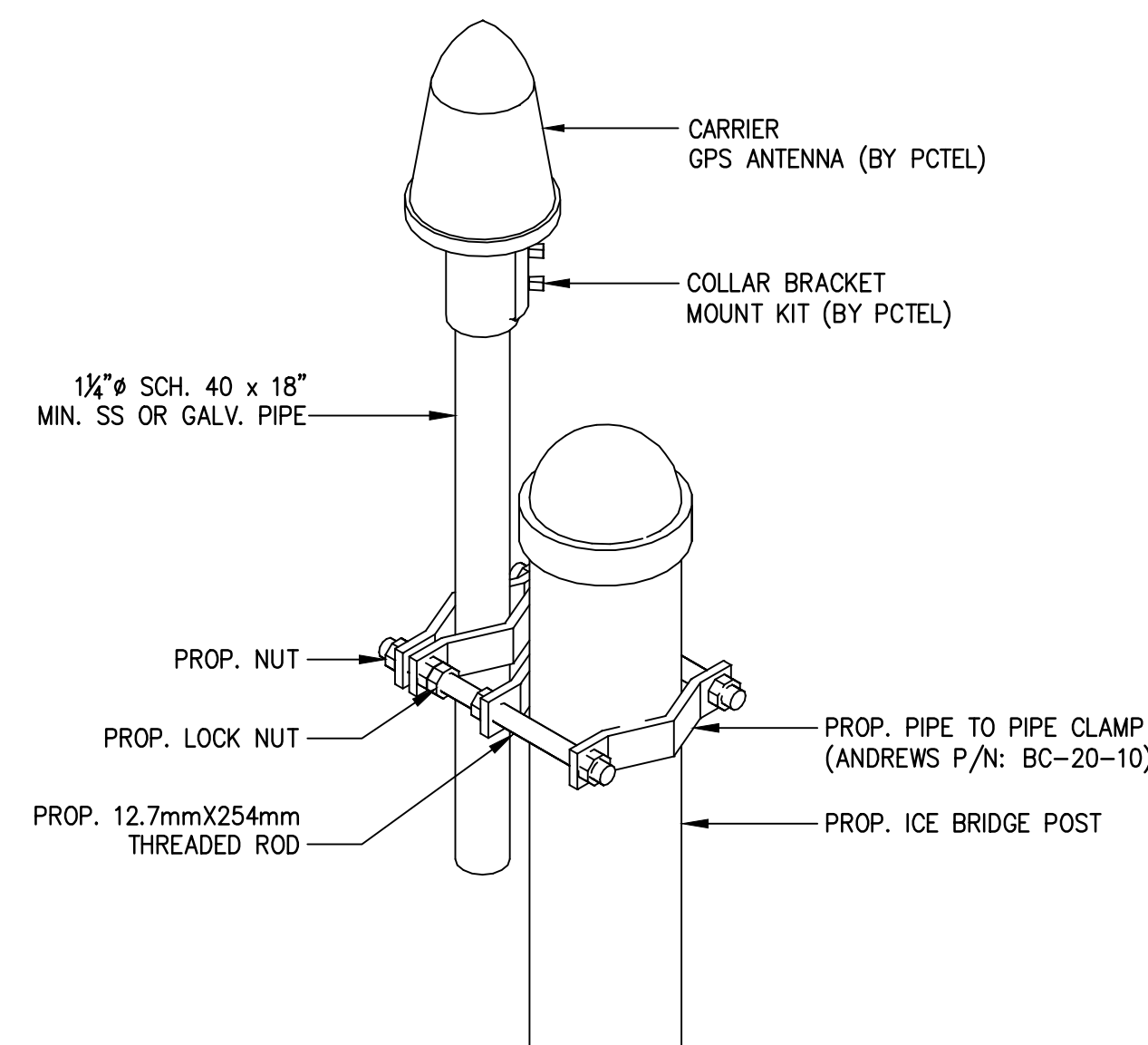
NOTE:
MOUNT ICE BRIDGE W/6'-8"
MIN. CLEARANCE FROM
GROUND TO UNDERSIDE OF
CABLE SUPPORT

ITEM	PART NO.	DESCRIPTION	QTY.
1	WBLB123.06	12" WAVEGUIDE BRIDGE SUPPORT BRACKET	2
2	MF-130	DIRECT BURIAL PIPE COLUMN, 13'-4"	2
3	WB-CY110	12" SAFETY GRATING	1
4	WB-K110BH	HARDWARE KIT ITEM #5-16	1

CABLE BRIDGE DETAIL

SCALE: NTS

6
Z-2



- THE GPS ANTENNA MOUNT IS DESIGNED TO FASTEN TO A STANDARD 1"-1 1/2" DIAMETER GALVANIZED STEEL OR STAINLESS STEEL PIPE. THE PIPE MUST NOT BE THREADED AT THE ANTENNA MOUNT END. THE PIPE SHALL BE CUT TO THE REQUIRED LENGTH USING A HAND OR ROTARY PIPE CUTTER TO ASSURE A SMOOTH AND PERPENDICULAR CUT. THE CUT PIPE END SHALL BE DEBURRED AND SMOOTH IN ORDER TO SEAL AGAINST THE NEOPRENE GASKET ATTACHED TO THE ANTENNA MOUNT.

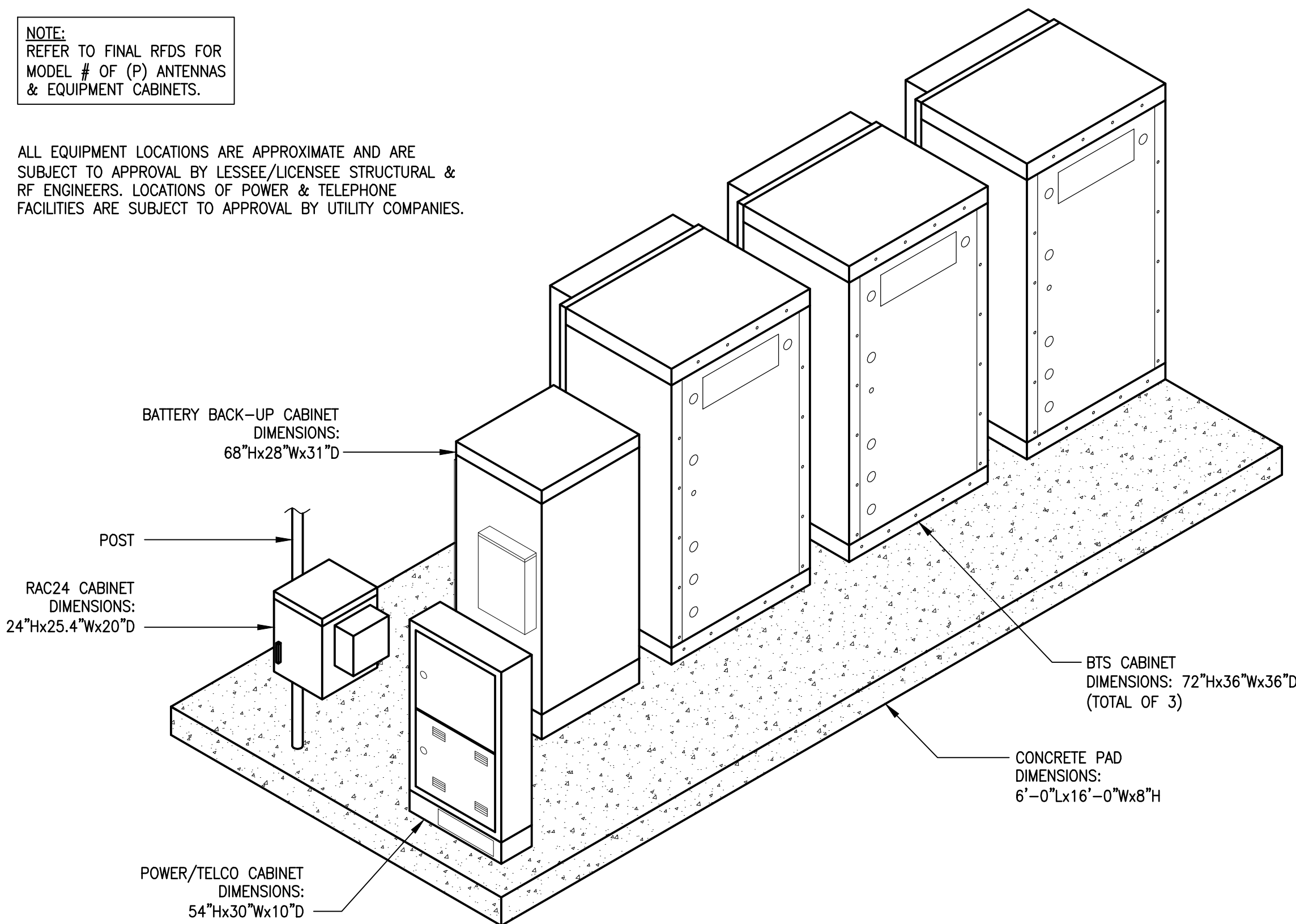
GPS MOUNTING DETAIL

SCALE: N.T.S.

7
Z-2

NOTE:
REFER TO FINAL RFDS FOR
MODEL # OF (P) ANTENNAS
& EQUIPMENT CABINETS.

ALL EQUIPMENT LOCATIONS ARE APPROXIMATE AND ARE
SUBJECT TO APPROVAL BY LESSEE/LICENSSEE STRUCTURAL &
RF ENGINEERS. LOCATIONS OF POWER & TELEPHONE
FACILITIES ARE SUBJECT TO APPROVAL BY UTILITY COMPANIES.



EQUIPMENT DETAILS

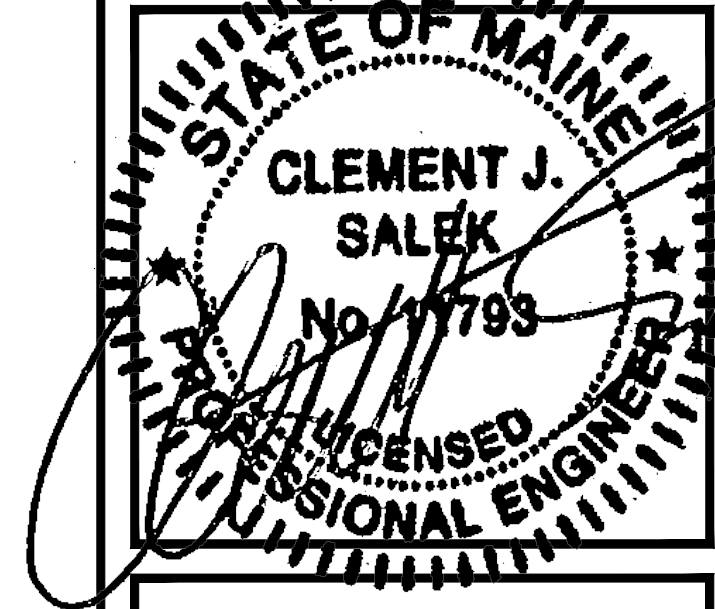
SCALE: N.T.S.

5
Z-2

T-MOBILE NORTHEAST, LLC
15 COMMERCE WAY, SUITE B
NORTON, MA 02766
OFFICE: (508) 286-2700
FAX: (508) 286-2893

CHAPPELL
ENGINEERING
ASSOCIATES, LLC
Civil-Structural-Land Surveying

R.K. EXECUTIVE CENTRE
201 BOSTON POST ROAD WEST
SUITE 301
MARLBOROUGH, MA 01752
(508)481-7400
www.chappellengineering.com



APPROVALS

LANDLORD _____
LEASING _____
R.F. _____
ZONING _____
CONSTRUCTION _____
A/E _____

PROJECT NO: 4PB-1288-A

DRAWN BY: CMC

CHECKED BY: JMF

SUBMITTALS

1	12/17/14	CONSTRUCTION FINAL
0	10/09/14	ISSUED FOR REVIEW

THIS DOCUMENT IS THE CREATION, DESIGN,
PROPERTY AND COPYRIGHTED WORK OF
T-MOBILE NORTHEAST, LLC. ANY DUPLICATION
OR USE WITHOUT EXPRESS WRITTEN CONSENT IS
STRICTLY PROHIBITED. DUPLICATION AND USE BY
GOVERNMENT AGENCIES FOR THE PURPOSES OF
CONDUCTING THEIR LAWFULLY AUTHORIZED
REGULATORY AND ADMINISTRATIVE FUNCTIONS IS
SPECIFICALLY ALLOWED.

4PB-1288-A

WGME INC.

81 NORTHPORT DRIVE
PORTLAND, ME 04103

SHEET TITLE

EQUIPMENT &
ANTENNA DETAILS

SHEET NUMBER

Z-2