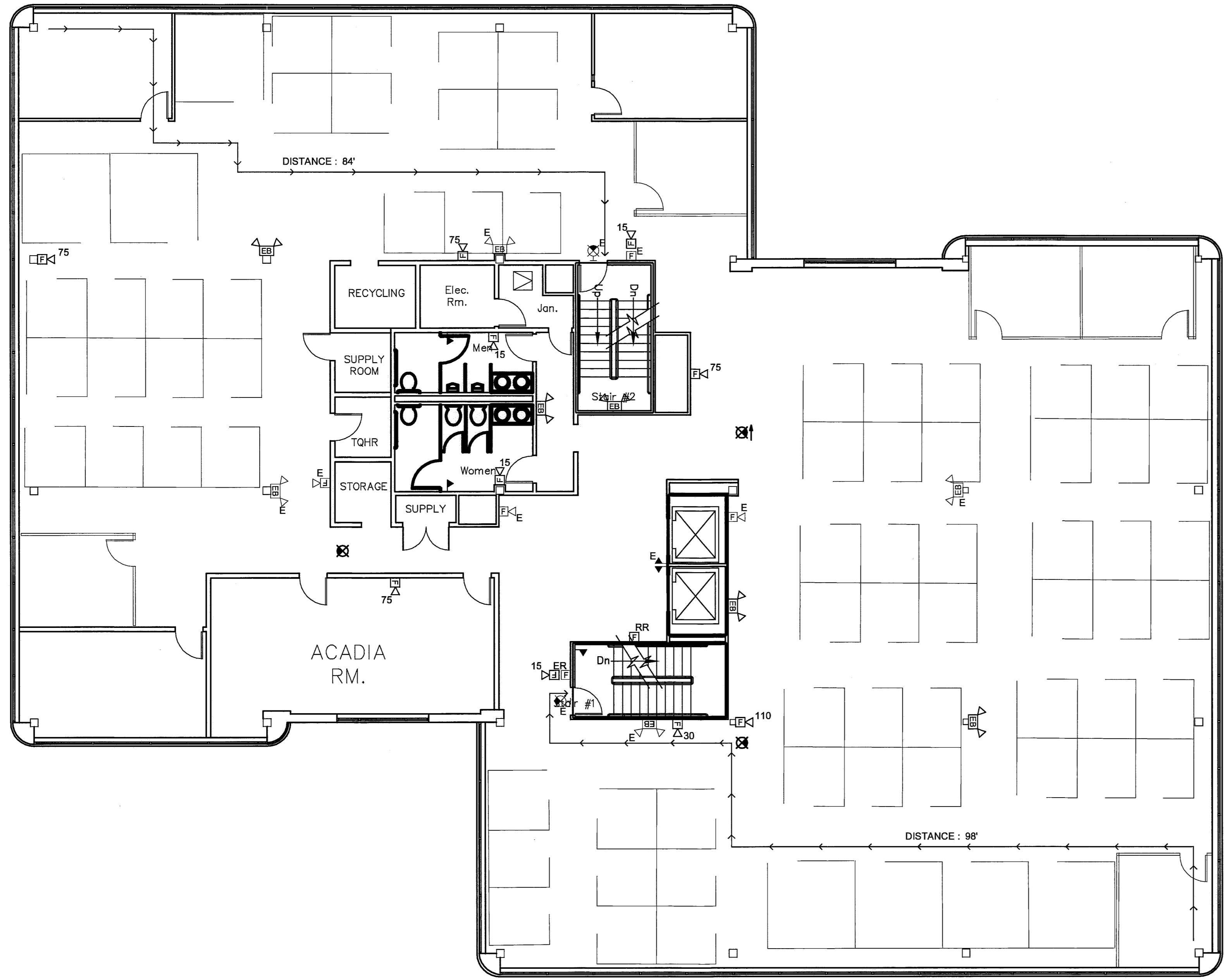


10/21/2010 7:55 AM I:\3601-3700\362600 MPHC MOB HVAC RENOVATIONS\2 DESIGN\DWGS\BLDG\MPHC MOB HVAC RENOVATIONS\SHEETS\3626.00-G1005 CODE COMPLIANCE THIRD FLOOR PLAN.DWG KYLE MAHAR



NOTES:

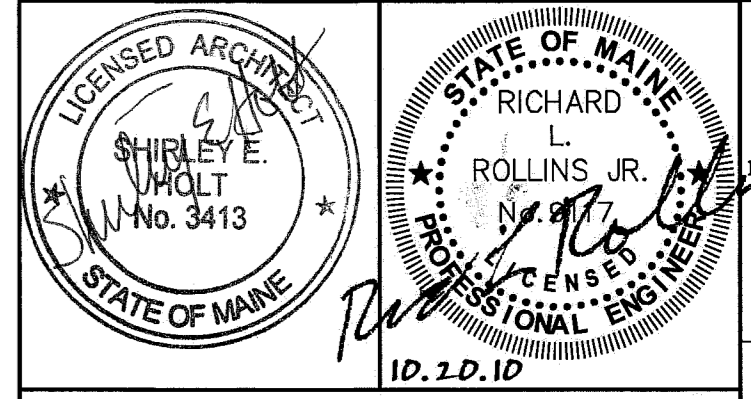
———— 2 HR WALL

*** ALL CEILINGS ARE 2X2 ACOUSTIC PANEL CEILING**

*** ALL NEW WALLS ARE 3 5/8" METAL STUDS W/ 5/8" GWB EACH SIDE EXTEND 6" ABOVE CEILING.**

---	---	---
0	CONSTRUCTION DOCS	10.20.10
REV.	DESCRIPTION	DATE

CONSTRUCTION DOCUMENTS
10.20.10



WBRC
ARCHITECTS • ENGINEERS
WWW.WBRCAE.COM
BANGOR, MAINE 207-947-4511
PORTLAND, MAINE 207-828-4511
SARASOTA, FLORIDA 941-556-0757

MARTIN'S POINT HEALTH CARE
NORTHPORT PLAZA HVAC
RENOVATIONS
PORTLAND, ME

CODE COMPLIANCE THIRD FLOOR PLAN

SHEET TITLE:	3626.00 - G1005
PROJECT No.	3626.00
SCALE:	AS NOTED
PM:	RLR
DRAWN BY:	---
A/E OF RECORD:	---

GRAPHIC SCALE: 0" = 1"
G1005

- ELECTRICAL LEGEND**
- ALL DEVICES, FIXTURES, ETC. SHALL BE NEW UNLESS DESIGNATED WITH THE FOLLOWING TAGS:
- E EXISTING TO REMAIN
 - ER EXISTING RELOCATED
 - NR NEW TO REPLACE EXISTING IN EXISTING LOCATION
 - R EXISTING TO BE REMOVED
 - RR REMOVE & RELOCATE EXISTING
- ☒ CEILING MOUNTED EXIT SIGN - ARROW INDICATES DIRECTIONAL ARROW ON SIGN
 - ☒ WALL MOUNTED EXIT SIGN - ARROW INDICATES DIRECTIONAL ARROW ON SIGN EMERGENCY LIGHTING
 - ☒ BATTERY PACK WITH EMERGENCY LAMPS AS SHOWN
 - ☒ REMOTE EMERGENCY LAMP LIGHT FIXTURES
 - ☒ WALL MOUNTED FIRE ALARM SYSTEM MANUAL PULL STATION
 - ☒ FIRE ALARM SYSTEM WALL MOUNTED AUDIO/VISUAL DEVICE WITH VISUAL DEVICE CANDELA RATING AS NOTED