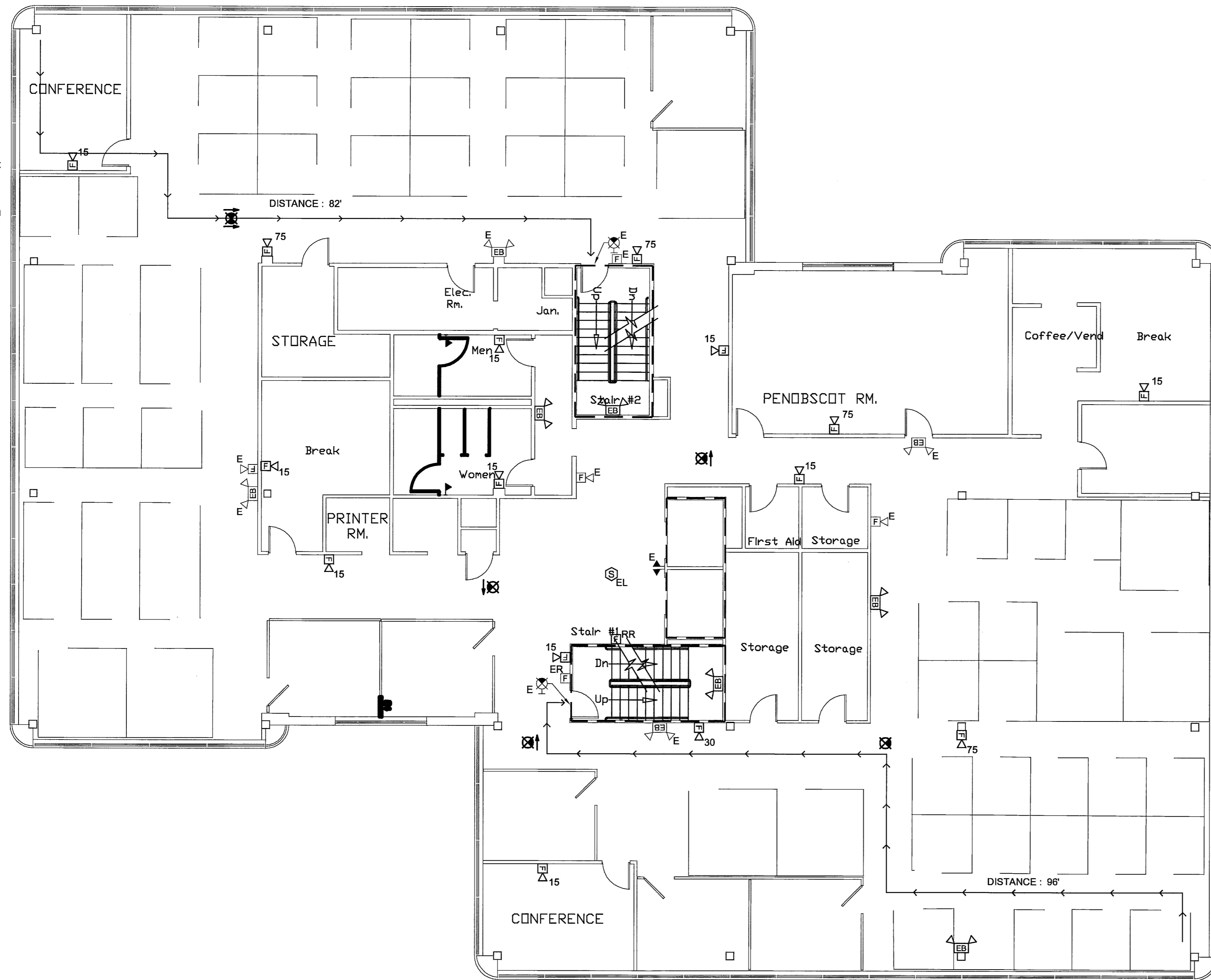


10/21/2010 7:54 AM I:\3601-3700\362600 MPHIC MOB HVAC RENOVATIONS\2 DESIGN\DWGS\BLDG\MPHC MOB HVAC RENOVATIONS\SHEETS\3626.00-GI04 CODE COMPLIANCE SECOND FLOOR PLAN.DWG KYLE MAHAR

34- 6x6 cubes
3- 9x9 cubes
3- 10x12 Twall
Conference rm



21- 6x6 cubes
5- 9x9 cubes
3- 10x12 Twall
1- Conference rm.
1- Private Office

NOTES:

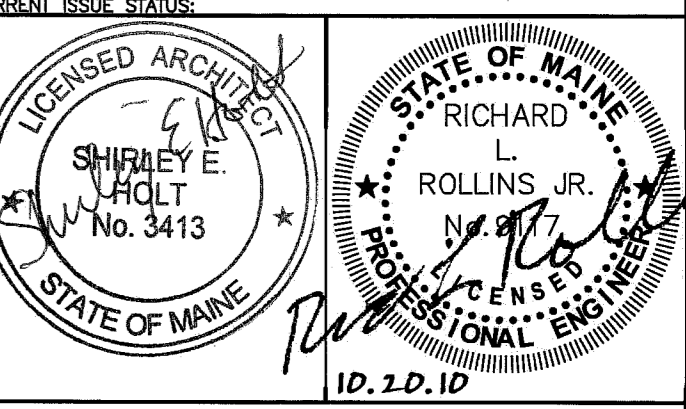
--- 2 HR WALL

***ALL CEILINGS ARE 2X2 ACOUSTIC PANEL CEILING**

***ALL NEW WALLS ARE 3 5/8" METAL STUDS W/ 5/8" GWB EACH SIDE EXTEND 6" ABOVE CEILING.**

---	---	---
0	CONSTRUCTION DOCS	10.20.10
REV.	DESCRIPTION	DATE

CONSTRUCTION DOCUMENTS
10.20.10



WBRC
ARCHITECTS • ENGINEERS
WWW.WBRCAE.COM
BANGOR, MAINE 207-947-4511
PORTLAND, MAINE 207-828-4511
SARASOTA, FLORIDA 941-556-0757

MARTIN'S POINT HEALTH CARE
NORTHPORT PLAZA HVAC
RENOVATIONS
PORTLAND, ME

CODE COMPLIANCE SECOND FLOOR PLAN

SHEET TITLE:	3626.00 - GI004
WBRC CAD FILE:	3626.00
PROJECT No.	3626.00
SCALE:	AS NOTED
DATE:	10.20.10
DRAWN BY:	RLR
A/E OF RECORD:	---

ELECTRICAL LEGEND

ALL DEVICES, FIXTURES, ETC. SHALL BE NEW UNLESS DESIGNATED WITH THE FOLLOWING TAGS:

- E EXISTING TO REMAIN
- ER EXISTING RELOCATED
- NR NEW TO REPLACE EXISTING IN EXISTING LOCATION
- R EXISTING TO BE REMOVED
- RR REMOVE & RELOCATE EXISTING
- ☒ CEILING MOUNTED EXIT SIGN - ARROW INDICATES DIRECTIONAL ARROW ON SIGN
- ☒ WALL MOUNTED EXIT SIGN - ARROW INDICATES DIRECTIONAL ARROW ON SIGN EMERGENCY LIGHTING
- ☒ BATTERY PACK WITH EMERGENCY LAMPS AS SHOWN
- ☒ REMOTE EMERGENCY LAMP LIGHT FIXTURES
- ☒ WALL MOUNTED FIRE ALARM SYSTEM MANUAL PULL STATION
- ☒ FIRE ALARM SYSTEM WALL MOUNTED AUDIO/VISUAL DEVICE WITH VISUAL DEVICE CANDELA RATING AS NOTED

A1 CODE COMPLIANCE SECOND FLOOR PLAN

1/8" = 1'-0"

GI004