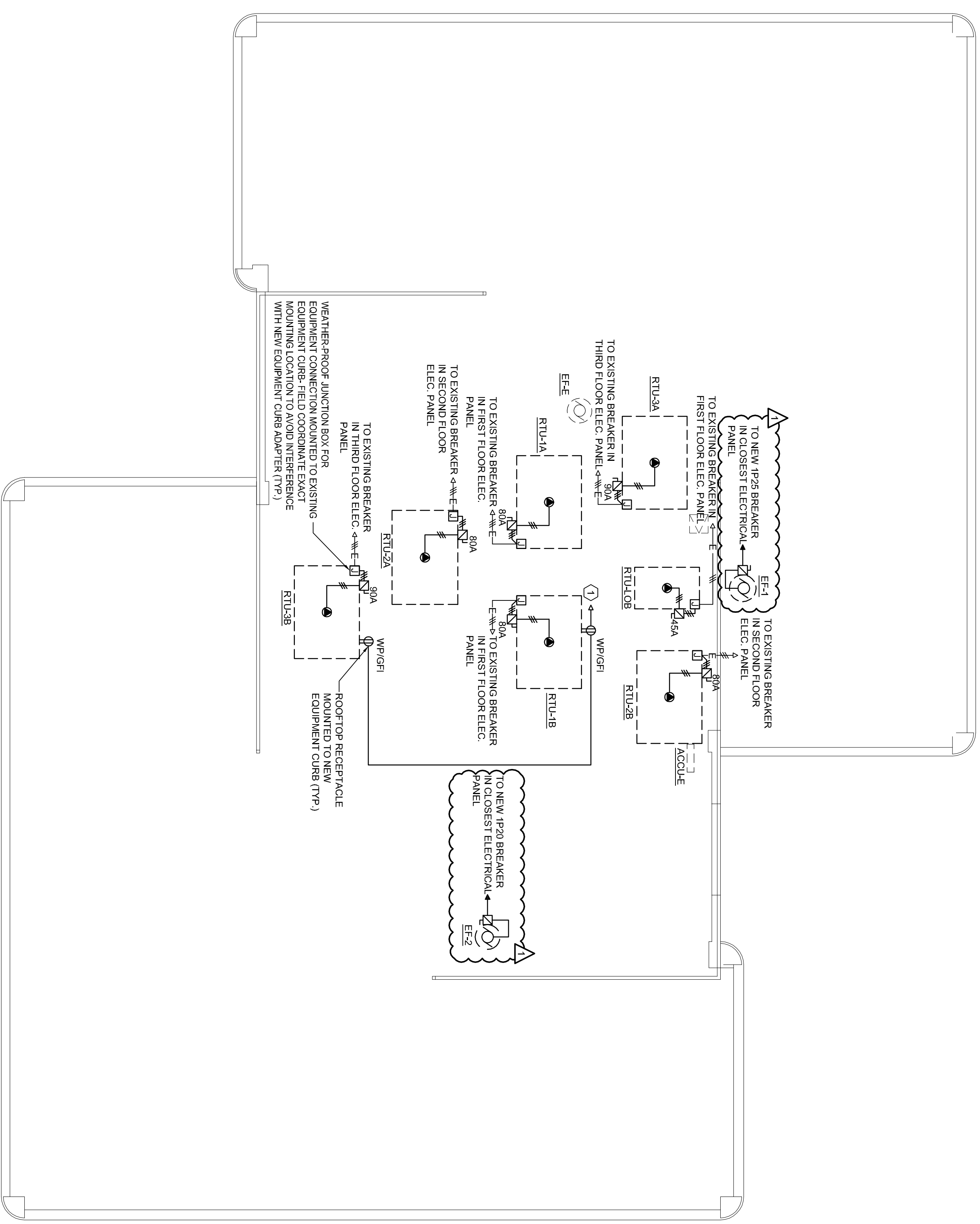


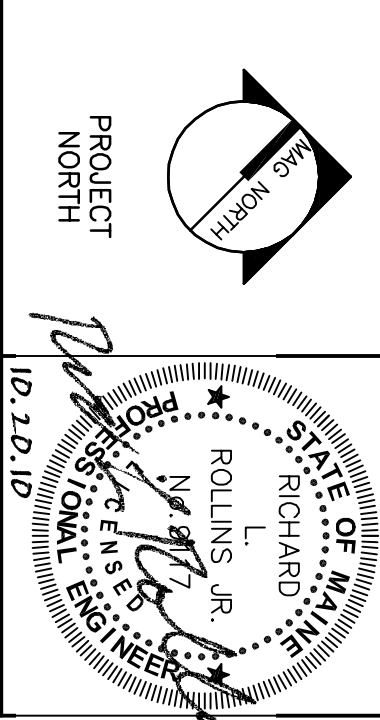
A1  
ELECTRICAL ROOF PLAN  
1/8" = 1'-0"



- GENERAL NOTES:**
- ALL NEW ELECTRICAL CONDUCTORS SHALL BE PREMIUM RATED.
  - REMOVE EXISTING ROOFTOP UNIT POWER CONNECTIONS & ALL ASSOCIATED MOTORS, STARTERS, DISCONNECTS AND OTHER CONTROLS. CAP ELECTRICAL CONNECTION & COIL IN WEATHER PROOF JUNCTION BOX MOUNTED TO EXISTING EQUIPMENT CURB.
  - ALL DISCONNECTS, LOCATED ON ROOF SHALL BE WEATHER-PROOF TYPE.
- TECHNICAL NOTES:**
- PROVIDE 20AMP CIRCUIT TO SPARE CIRCUIT BREAKER IN CLOSEST ELECTRICAL PANELBOARD. IF NO SPARE CIRCUIT BREAKER IS AVAILABLE, CONNECT TO CLOSEST EXISTING RECEPTACLE CIRCUIT WITH SPARE CAPACITY.

CONSTRUCTION DOCUMENTS  
10.18.10

| REV. | DESCRIPTION       | DATE     |
|------|-------------------|----------|
| 1    | REISSUED          | 10.20.10 |
| 0    | CONSTRUCTION DOCS | 10.18.10 |



**WBRC**  
ARCHITECTS • ENGINEERS

BANGOR, MAINE 20129-4211  
PORTLAND, MAINE 20129-7741  
SEASIDE, MAINE 20129-6741  
SARASOTA, FLORIDA 941-556-0757

PROJECT:  
**MARTIN'S POINT HEALTH CARE  
NORTHPORT PLAZA HVAC  
RENOVATIONS**  
PORTLAND, ME

**ELECTRICAL ROOF PLAN**

SHEET TITLE: 3626.00 - E-104  
PROJECT No. 3626.00  
SCALE: AS NOTED  
DATE: RLR  
DRAWN BY: LJM  
DATE OF RECORD: RLR

GRAPHIC SCALE:  
0' 1'  
1" = 1'-0"

E-104