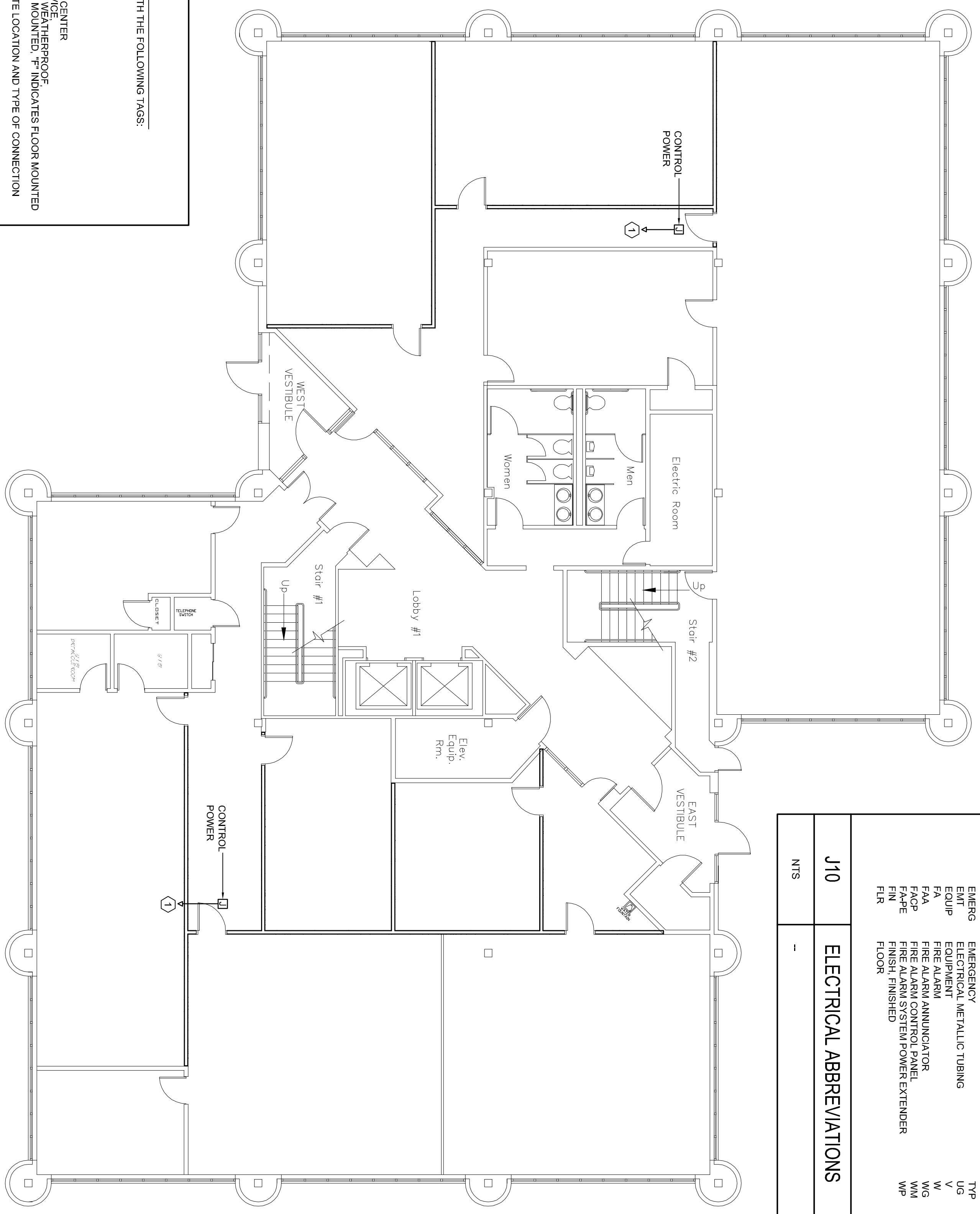


| ABBREVIATIONS |                                      |
|---------------|--------------------------------------|
| A             | AMPERES                              |
| AFF           | ABOVE FINISHED FLOOR                 |
| AFG           | ABOVE FINISHED GRADE                 |
| ATS           | AUTOMATIC TRANSFER SWITCH            |
| BATT          | BATTERY                              |
| BATL          | BATTERY HYDRO ELECTRIC CO.           |
| BKR           | BREAKER                              |
| BLDG          | BUILDING                             |
| CB            | CIRCUIT BREAKER                      |
| CKT           | CIRCUIT                              |
| CLG           | CEILING                              |
| CMP           | CENTRAL MAINE POWER CO.              |
| CT            | CURRENT TRANSFORMER                  |
| DN            | DOWN                                 |
| DWG           | DRAWING                              |
| EMERG         | EMERGENCY                            |
| EMERG         | EMERGENCY METALLIC TUBING            |
| EQUIP         | EQUIPMENT                            |
| FA            | FIRE ALARM                           |
| FAA           | FIRE ALARM ANNUNCIATOR               |
| FACP          | FIRE ALARM CONTROL PANEL             |
| FAPR          | FIRE ALARM SYSTEM POWER EXTENDER     |
| FIN           | FINISH                               |
| FLR           | FLOOR                                |
| GND           | GROUND                               |
| HP            | HORSEPOWER, HEAT PUMP                |
| JB            | JUNCTION BOX                         |
| KVA           | KILO VOLT AMPS                       |
| KV            | KILOVOLT(S)                          |
| LAG           | LOADING                              |
| LAG           | LOADING                              |
| MIN           | MINIMUM                              |
| N             | NEW                                  |
| OC            | ON CENTER                            |
| OS/OI         | OWNER SUPPLIED, OWNER INSTALLED ITEM |
| PAR           | PARTIAL CIRCUIT                      |
| PVC           | POLYVINYL CHLORIDE                   |
| RECEP         | RECEPTACLE                           |
| TEL           | TELEPHONE                            |
| TRP           | TRIP                                 |
| UG            | UNDERGROUND                          |
| V             | VOLTS                                |
| W             | WATTS                                |
| WG            | WIRE GUARD                           |
| WM            | WIREMOLD                             |
| WP            | WEATHERPROOF                         |

| ELECTRICAL ABBREVIATIONS |  |
|--------------------------|--|
| J10                      |  |
| NTS                      |  |



**LEGEND**

ALL DEVICES, FIXTURES, ETC. SHALL BE NEW UNLESS DESIGNATED WITH THE FOLLOWING TAGS:

- ER EXISTING TO REMAIN
- NR NEW TO REPLACE EXISTING
- RR REMOVE & RELOCATE EXISTING
- 20 AMP DUPLEX CONVENIENCE RECEPTACLE - MOUNT AT 18" A.F.F. TO CENTER UNLESS INDICATED OTHERWISE. \*GFI INDICATES GROUND FAULT DEVICE. \*IG INDICATES GFI PROTECTED BY UPSTREAM DEVICE. \*WP INDICATES WEATHERPROOF. \*IG INDICATES INSULATED/ISOLATED GROUND. \*C INDICATES CEILING MOUNTED. \*F INDICATES FLOOR MOUNTED SPECIAL PURPOSE OUTLET OR EQUIPMENT CONNECTION - COORDINATE LOCATION AND TYPE OF CONNECTION WITH EQUIPMENT BEING SERVED.
- JUNCTION BOX WITH COVER
- MOTOR - SIZE AS INDICATED - COORDINATE W/ ACTUAL EQUIPMENT BEING SERVED
- FUSED DISCONNECT SWITCH - NEMA ENCLOSURE AS REQUIRED REMOTE CONTROL
- BRANCH CIRCUIT RUN IN CEILING OR IN WALLS
- LOW VOLTAGE OR CONTROL WIRING - #12 MINIMUM OR AS NOTED
- MULTI-CONDUCTOR BRANCH CIRCUIT - NUMBER OF HASHMARKS IS NUMBER OF WIRES (NOT INCLUDING GROUND WIRE) WITHOUT HASHMARKS IS TWO WIRE
- HOMERUN TO CIRCUIT AND PANEL INDICATED - NUMBER OF ARROWS IS NUMBER OF PHASE WIRES - NUMBER OF WIRES AS INDICATED ABOVE
- CONTINUATION OF CIRCUIT
- DIRECTIVE ARROW
- PANELBOARD - SEE PANELBOARD SCHEDULE(S)
- DATA JACK - \*P INDICATES NUMBER OF DATA LINES. PROVIDE (1) EACH UNLESS NOTED OTHERWISE - \*U INDICATES 48" TO CENTER JACK.

| NO. | DESCRIPTION       |
|-----|-------------------|
| A1  | ELECTRICAL LEGEND |
| NTS |                   |

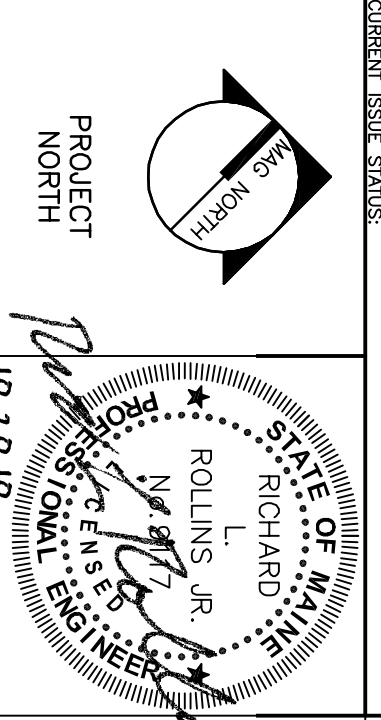
| NO. | DESCRIPTION                 |
|-----|-----------------------------|
| A6  | FIRST FLOOR ELECTRICAL PLAN |
| NTS |                             |

**GENERAL NOTES:**  
 1. ALL NEW ELECTRICAL CONDUCTORS SHALL BE PLENUM RATED.

**TECHNICAL NOTES:**  
 1. PROVIDE 20AMP CIRCUIT TO SPARE CIRCUIT BREAKER IN CLOSEST ELECTRICAL PANELBOARD. IF NO SPARE CIRCUIT BREAKER IS AVAILABLE, CONNECT TO CLOSEST EXISTING RECEPTACLE CIRCUIT WITH SPARE CAPACITY.

| REV. | DESCRIPTION       | DATE     |
|------|-------------------|----------|
| 1    | REISSUED          | 10.20.10 |
| 0    | CONSTRUCTION DOCS | 10.18.10 |

CONSTRUCTION DOCUMENTS  
 10.18.10



**WBRC** ARCHITECTS • ENGINEERS  
 BANGOR, MAINE 04401  
 PORTLAND, ME 04101  
 WWW.WBRC.COM

PROJECT: MARTIN'S POINT HEALTH CARE NORTHPORT PLAZA HVAC RENOVATIONS  
 PORTLAND, ME

SHEET TITLE: FIRST FLOOR ELECTRICAL PLAN

SHEET NO.: E-101

|                 |                 |
|-----------------|-----------------|
| SHEET TITLE:    | 3626.00 - E-101 |
| PROJECT NO.:    | 3626.00         |
| SCALE:          | AS NOTED        |
| DATE:           | 10/18/10        |
| DESIGNED BY:    | RLR             |
| CHECKED BY:     | LJM             |
| DATE OF RECORD: | 10/18/10        |