

PRODUCTS
1. PRODUCTS: AS SELECTED BY ARCHITECT COMPLYING WITH THE FOLLOWING.

2. GYPSUM BOARD:
A. GYPSUM WALLBOARD: ASTM C 36, REGULAR, FOIL-BACKED, AND FIRE-RATED TYPES, IN THICKNESS AS DENOTED ON DRAWINGS.
B. WATER-RESISTANT GYPSUM BACKING BOARD: ASTM C 630, REGULAR AND FIRE-RATED TYPES, IN THICKNESS AS DENOTED ON DRAWINGS.
C. JOINT TREATMENT: ASTM C 475 AND ASTM C 840, 3-COAT SYSTEM.
D. INSTALLATION STANDARD: ASTM C 840.

3. CEMENTITIOUS BACKER UNITS:

- A. TYPE: ANSI A 118.9, [CEMENT-COATED PORTLAND CEMENT], [VINYL-COATED PORTLAND CEMENT], [REINFORCED PORTLAND CEMENT].
B. THICKNESS: 1/2 INCH NOMINAL.

4. TRIM ACCESSORIES:

- A. MATERIAL: METAL OR PLASTIC TRIM.
B. TYPES: CORNER BEAD, EDGE TRIM, AND CONTROL JOINTS.
C. DECORATIVE PROFILES: ALUMINUM REVEALS AND CHANNELS.

5. STEEL FRAMING FOR WALLS AND PARTITIONS:

- A. STEEL STUDS AND RUNNERS: ASTM C 645, SIZE AS DENOTED ON DRAWINGS WITH GAGE TO CORRELATE TO DEFLECTION ALLOWANCE.
B. FURRING CHANNELS: ASTM C 645, 25 GAGE (.0179 INCH).
C. AUXILIARY FRAMING COMPONENTS: FURRING BRACKETS, RESILIENT FURRING CHANNELS, Z-FURRING MEMBERS, AND NON-CORROSIVE FASTENERS.
D. INSTALLATION STANDARD: ASTM C 754.

6. STEEL FRAMING FOR SUSPENDED AND FURRED CEILING:

- A. FURRING CHANNELS: ASTM C 645, 25 GAGE (.0179 INCH) STANDARD CHANNELS.
B. STEEL STUDS: MATCH STEEL STUDS USED FOR WALLS.
C. ACCESSORIES: HANGERS AND INSERTS.
D. INSTALLATION STANDARD: ASTM C 754.

7. AUXILIARY MATERIALS:

- A. GYPSUM BOARD SCREWS, ASTM C 1002.
B. GYPSUM BOARD NAILS, ASTM C 514.
C. FASTENING ADHESIVE.
D. CONCEALED ACOUSTICAL SEALANT.
E. MINERAL FIBER SOUND ATTENUATION BLANKETS.
F. MINERAL FIBER THERMAL INSULATION.
G. POLYETHYLENE VAPOR RETARDER, 6 MILS.
H. POLYSTYRENE AGGREGATED FINISH FOR CEILINGS.

INSTALLATION

1. COMPLY WITH REQUIREMENTS OF SECTION 01000 - PROJECT REQUIREMENTS.
2. COMPLY WITH STANDARDS REFERENCED ABOVE AND ASTM C 840 AND GA 216.
3. INSTALL JOINTS ONLY OVER FRAMING MEMBERS. DO NOT ALLOW BUTT-TO-BUTT JOINTS.
4. PROVIDE BLOCKING FOR ITEMS SUCH AS RAILINGS, GRAB BARS, CASEWORK, TOILET ACCESSORIES, AND SIMILAR ITEMS.
5. PROVIDE ACOUSTICAL SEALANT AT RUNNER TRACKS, WALL PERIMETERS, OPENINGS, EXPANSION, AND CONTROL JOINTS.
6. INSTALL GYPSUM BOARD ASSEMBLIES TRUE, PLUMB, LEVEL AND IN PROPER RELATION TO ADJACENT SURFACES.
7. WHERE NEW PARTITIONS MEET EXISTING CONSTRUCTION, REMOVE EXISTING CORNER BEADS TO PROVIDE SMOOTH TRANSITION.
8. PROVIDE 3-COAT JOINT TREATMENT SUCH THAT, AFTER FINISHING, JOINTS ARE NOT VISIBLE.
A. SAND AND LEAVE READY FOR FINISH PAINTING AND WALL TREATMENT

SECTION 09511 - ACOUSTICAL CEILINGS

SUMMARY

1. PROVIDE ACOUSTICAL LAY-IN CEILINGS, TRIM, AND METAL SUSPENSION SYSTEM.
2. REMODEL EXISTING ACOUSTICAL LAY-IN CEILINGS, TRIM, AND METAL SUSPENSION SYSTEM.

SUBMITTALS

1. SUBMIT PRODUCT DATA, SAMPLES.

PRODUCTS

1. PRODUCTS: AS SELECTED BY ARCHITECT COMPLYING WITH THE FOLLOWING.
2. ACOUSTICAL PANEL CEILINGS: AS INDICATED ON DRAWINGS.
A. SIZE: [24 BY 24 INCHES] [24 BY 48 INCHES] [48 BY 48 INCH] [3/4 INCH] THICK.
B. EDGE DETAIL: [SQUARE] [REVEAL] EDGE.
C. PATTERN: [UNTEXTURED] [TEXTURED] [HEAVILY TEXTURED] [HEAVILY TEXTURED] [LIGHTLY TEXTURED] [LIGHTLY TEXTURED] [AND SCORED] PATTERN.
D. TYPE AND FINISH: [PAINTED] [SCRUBBABLE] FINISH, ASTM E 1264.
3. ACOUSTICAL TILE CEILINGS:
A. SIZE: [12 BY 12 INCHES] [12 BY 24 INCHES] BY [3/4 INCH] THICK.
B. EDGE DETAIL: [SQUARE] [BEVELED] [RABBETED] JOINTS.
C. PATTERN: [UNTEXTURED] [TEXTURED] [HEAVILY TEXTURED] [HEAVILY TEXTURED] [LIGHTLY TEXTURED] [LIGHTLY TEXTURED] PATTERN.
D. TYPE AND FINISH: [PAINTED] [SCRUBBABLE] FINISH, ASTM E 1264.
4. SUSPENSION SYSTEMS: AS INDICATED ON DRAWINGS
A. EXPOSED GRID SUSPENSION SYSTEM, ASTM C 635 INTERMEDIATE DUTY CLASSIFICATION, [STANDARD] [NARROW] [SLOTTED] PROFILE.
B. CONCEALED GRID SUSPENSION SYSTEM, ASTM C 635 INTERMEDIATE DUTY CLASSIFICATION.
C. FIRE RATING: [NON-FIRE RESISTANCE RATED] [FIRE RESISTANCE RATED] SUSPENSION SYSTEM.
D. SUSPENSION SYSTEM ACCESSORIES: ATTACHMENT DEVICES AND HANGERS, ASTM C 635.
E. CAR MATERIAL: [PAINTED STEEL] [PAINTED ALUMINUM] [NATURAL ALUMINUM] FINISH.
F. EDGE MOLDING AND TRIM.

INSTALLATION

1. COMPLY WITH REQUIREMENTS OF SECTION 01000 - PROJECT REQUIREMENTS.
2. MEASURE AND LAYOUT ACOUSTICAL CEILINGS TO AVOID LESS THAN 1/2 PANEL UNITS WHENEVER PRACTICAL.
3. INSTALL SUSPENSION SYSTEMS IN ACCORDANCE WITH ASTM C 636.
4. INSTALL PANELS WITH PATTERN OR GRAIN RUNNING ONE-WAY.

SECTION 09680 - RESILIENT FLOORING

SUMMARY

1. PROVIDE RESILIENT FLOORING.
2. REMODEL EXISTING RESILIENT FLOORING.

SUBMITTALS

1. SUBMIT PRODUCT DATA, SAMPLES AND MAINTENANCE DATA.

PRODUCTS

1. PRODUCTS: AS SELECTED BY ARCHITECT COMPLYING WITH THE FOLLOWING.
2. TILE FLOORING:
A. VINYL COMPOSITION TILE: ASTM F 1066, COMPOSITION 1, NONASBESTOS FORMULATED, CLASS 1, 12 BY 12 INCHES BY 1/8 INCH THICK.
B. VINYL TILE: FS SS-T-312B, TYPE III, [9 BY 9 INCHES] [12 BY 12 INCHES] [18 BY 18 INCHES] BY [1/8 INCH] THICK.
3. SHEET FLOORING:
A. SHEET VINYL WITHOUT BACKING: ASTM F 1303 [COMMERCIAL] [LIGHT COMMERCIAL] [RESIDENTIAL] GRADE.
B. SHEET VINYL WITH BACKING: ASTM F 1303 [COMMERCIAL] [LIGHT COMMERCIAL] [RESIDENTIAL] GRADE.
C. WEARING SURFACE: [SMOOTH] [EMBOSSSED].
D. SEAMS: [CHEMICALLY BONDED] [HEAT WELDED].
4. AUXILIARY MATERIALS:
A. EDGE STRIPS AND TERMINATIONS.
B. FEATURE STRIPS AND INLAIN BORDERS.

INSTALLATION

1. COMPLY WITH REQUIREMENTS OF SECTION 01000 - PROJECT REQUIREMENTS.
2. PREPARE SURFACES BY CLEANING, LEVELING AND PRIMING.
3. LEVEL TO 1/8 INCH IN 10 FEET TOLERANCE.
4. INSTALL TILE WITH TIGHT JOINTS AND REQUIRED PATTERNS.

SECTION 09678 - RESILIENT WALL BASE AND ACCESSORIES

SUMMARY

1. PROVIDE RESILIENT WALL BASE, RESILIENT STAIR ACCESSORIES, RESILIENT FLOORING ACCESSORIES, RESILIENT CARPET ACCESSORIES.
2. REMODEL EXISTING RESILIENT WALL BASE AND ACCESSORIES.

SUBMITTALS

1. SUBMIT PRODUCT DATA, SAMPLES.

PRODUCTS

1. PRODUCTS: AS SELECTED BY ARCHITECT COMPLYING WITH THE FOLLOWING.
2. RESILIENT WALL BASE:
A. RUBBER WALL BASE: FS SS-W-40, TYPE I, [0.125 INCHES] THICK.
B. VINYL WALL BASE: FS SS-W-40, TYPE II, [0.125 INCHES] THICK.
C. HEIGHT: 4 INCHES.
D. TYPE: STRAIGHT TYPE WITH NO TOE AT CARPET INSTALLATIONS, COVE TYPE WITH TOPSET TOE ELSEWHERE.
3. RESILIENT ACCESSORIES:
A. RUBBER ACCESSORIES.
B. VINYL ACCESSORIES.
4. INSTALLATION ACCESSORIES:
A. CONCRETE SLAB PRIMER: NONSTAINING TYPE.
B. TROWELABLE UNDERLAYMENTS AND PATCHING COMPOUNDS: LATEX-MODIFIED, PORTLAND-CEMENT-BASED FORMULATION.
C. STAIR TREAD NOSE FILLER: TWO-PART EPOXY COMPOUND.
D. ADHESIVES: WATER-RESISTANT TYPE.

INSTALLATION

1. COMPLY WITH REQUIREMENTS OF SECTION 01000 - PROJECT REQUIREMENTS.

SECTION 09680 - CARPET

SUMMARY

1. PROVIDE CARPET AND FLOOR PREPARATION.
2. REMODEL EXISTING CARPET.

SUBMITTALS

1. SUBMIT PRODUCT DATA, SAMPLES, SEAMING DIAGRAM, MOCKUP, WARRANTY, MAINTENANCE DATA.

PRODUCTS

1. PRODUCTS: AS DENOTED ON THE DRAWINGS.
2. CARPET MATERIAL: AS DENOTED ON THE DRAWINGS.
3. AUXILIARY MATERIALS:
A. EDGE GUARDS.
B. ADHESIVES, CEMENTS AND FASTENERS.
4. CARPET INSTALLATION METHOD: DIRECT GLUE DOWN INSTALLATION.

INSTALLATION

1. COMPLY WITH REQUIREMENTS OF SECTION 01000 - PROJECT REQUIREMENTS.
2. INSTALL WITH TIGHT SEAMS AND CARPET GRAIN RUNNING IN SAME DIRECTION.
3. PROVIDE CUTOUTS FOR FLOOR OUTLETS AND SIMILAR PENETRATIONS.
4. PROVIDE EDGE GUARDS AT CHANGE OF FLOORING MATERIALS.

SECTION 09900 - PAINTING

SUMMARY

1. PROVIDE PAINTING AND SURFACE PREPARATION FOR INTERIOR UNFINISHED SURFACES AS SCHEDULED.
2. PROVIDE PAINTING AND SURFACE PREPARATION OF EXPOSED MECHANICAL AND ELECTRICAL PIPING, CONDUIT, DUCTWORK, AND EQUIPMENT.
3. PROVIDE REPAINTING AND SURFACE PREPARATION AT AREAS OF REMODELING.
4. PROVIDE PAINTING OF ENTIRE SURFACE WHERE PATCH PAINTING IS REQUIRED.

SUBMITTALS

1. SUBMIT PRODUCT DATA, SAMPLES, MOCKUP OF EACH COLOR, EXTRA STOCK CONSISTING OF 1 UNOPENED GALLON OF EACH TYPE OF PAINT USED.

PRODUCTS

1. MANUFACTURER: BENJAMIN MOORE, PRATT & LAMBERT, SHERWIN WILLIAMS, OR APPROVED EQUAL.
2. REGULATIONS: COMPLIANCE WITH VOC AND ENVIRONMENTAL REGULATIONS.
3. FIRST-LINE COMMERCIAL-QUALITY PRODUCTS FOR ALL COATING SYSTEMS.

INSTALLATION

1. COMPLY WITH REQUIREMENTS OF SECTION 01000 - PROJECT REQUIREMENTS.
2. PROVIDE FIELD-APPLIED MOCK-UPS OF EACH COLOR AND FINISH SELECTED ON ACTUAL SURFACES TO BE PAINTED.
3. TEST SAMPLE AREA FOR ADHESION FOR EACH TYPE OF PAINT.
4. REMOVE COVER PLATES AND PROTECT HARDWARE AND ADJACENT SURFACES.
5. SAND BEFORE PAINTING UNTIL SMOOTH AND FLAT AND SAND BETWEEN COATS.
6. APPLY PAINT TO ACHIEVE MANUFACTURER'S RECOMMENDED DRY FILM THICKNESSES.
7. PAINT ENTIRE SURFACE WHERE PATCH PAINTING IS REQUIRED.
8. RECOAT AREAS WHICH SHOW BLEED-THROUGH OR DEFECTS.
9. CLEAN PAINT SPATTER FROM ADJACENT SURFACES AND GLASS.
10. TOUCH-UP DAMAGED SURFACES AT COMPLETION OF CONSTRUCTION.

DIVISION 10 - SPECIALTIES

SECTION 10651 - OPERABLE PANEL PARTITIONS

PART 1: GENERAL

1.1 RELATED DOCUMENTS

- A. DRAWINGS AND GENERAL PROVISIONS OF THE CONTRACT INCLUDING GENERAL AND SUPPLEMENTARY CONDITIONS AND DIVISION 1 SPECIFICATION SECTIONS, APPLY TO THIS SECTION.

1.2 SUMMARY

- A. THIS SECTION INCLUDES THE FOLLOWING:
1. MANUALLY OPERATED, INDIVIDUAL PANEL OPERABLE PARTITIONS.
B. RELATED SECTIONS INCLUDE THE FOLLOWING:
1. DIVISION 3 SECTIONS FOR CONCRETE TOLERANCES REQUIRED.
2. DIVISION 5 SECTIONS FOR PRIMARY STRUCTURAL SUPPORT, INCLUDING PRE-PUNCHING OF SUPPORT MEMBERS BY STRUCTURAL STEEL SUPPLIER PER OPERABLE PARTITION SUPPLIER'S TEMPLATE.
3. DIVISION 6 SECTIONS FOR WOOD FRAMING AND SUPPORTS, AND ALL BLOCKING AT HEAD AND JAMBS AS REQUIRED.
4. DIVISION 9 SECTIONS FOR WALL AND CEILING FRAMING AT HEAD AND JAMBS.

1.3 QUALITY ASSURANCE

- A. INSTALLER QUALIFICATIONS: AN EXPERIENCED INSTALLER WHO IS CERTIFIED IN WRITING BY THE OPERABLE PARTITION MANUFACTURER, AS QUALIFIED TO INSTALL THE MANUFACTURER'S PARTITION SYSTEMS FOR WORK SIMILAR IN MATERIAL, DESIGN, AND EXTENT TO THAT INDICATED FOR THIS PROJECT.
B. ACOUSTICAL PERFORMANCE: TEST OPERABLE PARTITIONS IN AN INDEPENDENT ACOUSTICAL LABORATORY IN ACCORDANCE WITH ASTM E90 TEST PROCEDURE TO ATTAIN NO LESS THAN THE STC RATING SPECIFIED. PROVIDE A COMPLETE AND UNEDITED WRITTEN TEST REPORT BY THE TESTING LABORATORY UPON REQUEST.
C. PREPARATION OF THE OPENING SHALL CONFORM TO THE CRITERIA SET FORTH PER ASTM E557 "STANDARD PRACTICE FOR

ARCHITECTURAL APPLICATION AND INSTALLATION OF OPERABLE PARTITIONS.*

1.4 SUBMITTALS

- A. PRODUCT DATA: MATERIAL DESCRIPTIONS, CONSTRUCTION DETAILS, FINISHES, INSTALLATION DETAILS, AND OPERATING INSTRUCTIONS FOR EACH TYPE OF OPERABLE PARTITION, COMPONENT, AND ACCESSORY SPECIFIED.
B. SHOP DRAWINGS: SHOW LOCATION AND EXTENT OF OPERABLE PARTITIONS. INCLUDE PLANS, SECTIONS, DETAILS, ATTACHMENTS TO OTHER CONSTRUCTION, AND ACCESSORIES. INDICATE DIMENSIONS, WEIGHTS, CONDITIONS AT OPENINGS, AND AT STORAGE AREAS, AND REQUIRED INSTALLATION, STORAGE, AND OPERATING CLEARANCES. INDICATE LOCATION AND INSTALLATION REQUIREMENTS FOR HARDWARE AND TRIM, INCLUDING FLOOR TOLERANCES REQUIRED AND DIRECTION OF TRAVEL. INDICATE BLOCKING TO BE PROVIDED BY OTHERS.
C. SETTING DRAWINGS: SHOW IMBEDDED ITEMS AND CUTOUTS REQUIRED IN OTHER WORK, INCLUDING SUPPORT BEAM PUNCHING TEMPLATE.
D. SAMPLES: COLOR SAMPLES DEMONSTRATING FULL RANGE OF FINISHES AVAILABLE BY ARCHITECT. VERIFICATION SAMPLES WILL BE AVAILABLE IN SAME THICKNESS AND MATERIAL INDICATED FOR THE WORK.

1.5 DELIVERY, STORAGE, AND HANDLING

- A. CLEARLY MARK PACKAGES AND PANELS WITH NUMBERING SYSTEMS USED ON SHOP DRAWINGS. DO NOT USE PERMANENT MARKINGS ON PANELS.
B. PROTECT PANELS DURING DELIVERY, STORAGE, AND HANDLING TO COMPLY WITH MANUFACTURER'S DIRECTION AND AS REQUIRED TO PREVENT DAMAGE.

1.6 WARRANTY

- A. PROVIDE WRITTEN WARRANTY BY MANUFACTURER OF OPERABLE PARTITIONS AGREEING TO REPAIR OR REPLACE ANY COMPONENTS WITH MANUFACTURING DEFECTS.
B. PARTITION WARRANTY PERIOD: TWO (2) YEARS FROM DATE OF SHIPMENT.
C. SUSPENSION SYSTEM WARRANTY: FIVE (5) YEARS FROM DATE OF SHIPMENT.

PART 2 - PRODUCTS

2.1 MANUFACTURERS, PRODUCTS, AND OPERATIONS

- A. MANUFACTURERS: SUBJECT TO COMPLIANCE WITH REQUIREMENTS, PROVIDE PRODUCTS BY THE FOLLOWING:
1. MODERNFOLD, INC.
B. PRODUCTS: SUBJECT TO COMPLIANCE WITH THE REQUIREMENTS, PROVIDE THE FOLLOWING PRODUCT:
1. OP-01: ACOUSTI-SEAL #931 MANUALLY OPERATED INDIVIDUAL PANEL OPERABLE PARTITION.

2.2 OPERATION

- A1. OP-01: ACOUSTI-SEAL #931: SERIES OF INDIVIDUAL FLAT PANELS, MANUALLY OPERATED, TOP SUPPORTED WITH OPERABLE FLOOR SEALS.
B. FINAL CLOSURE:
1. OP-01: HINGED PANEL CLOSURE

2.3 PANEL CONSTRUCTION

- A. NOMINAL 3-INCH (76MM) THICK PANELS IN MANUFACTURER'S STANDARD 48-INCH (1220MM) WIDTHS. ALL PANEL HORIZONTAL AND VERTICAL FRAMING MEMBERS FABRICATED FROM MINIMUM 16-GAGE FORMED STEEL WITH OVERLAPPED AND WELDED CORNERS FOR RIGIDITY. TOP CHANNEL IS REINFORCED TO SUPPORT SUSPENSION SYSTEM COMPONENTS. FRAME IS DESIGNED SO THAT FULL VERTICAL EDGES OF PANELS ARE OF FORMED STEEL AND PROVIDE CONCEALED PROTECTION OF THE EDGES OF THE PANEL SKIN.
B. PANEL SKIN SHALL BE:
1. OP-01: 0.50-INCH (13MM) TACKABLE FIRE CORE C GYPSUM BOARD, CLASS "A" RATED SINGLE MATERIAL OR COMPOSITE LAYERS CONTINUOUSLY BONDED TO PANEL FRAME. ACOUSTICAL RATINGS OF PANELS WITH THIS CONSTRUCTION:
A. 50 STC
C. HINGES FOR CLOSURE PANELS, PASS DOORS, AND POCKET DOORS SHALL BE:
1. OP-01: FULL LEAF BUTT HINGES, ATTACHED DIRECTLY TO THE PANEL FRAME. WELDED HINGE ANCHOR PLATES WITHIN PANEL SHALL FURTHER SUPPORT HINGE MOUNTING TO FRAME. HINGES MOUNTED INTO PANEL EDGE OR VERTICAL ASTRAGAL ARE NOT ACCEPTABLE.
D. PANEL TRIM: NO VERTICAL TRIM REQUIRED OR ALLOWED ON EDGES OF PANELS; MINIMAL GROOVE APPEARANCE AT PANEL JOINTS.
E. PANEL WEIGHTS:
1. OP-01: 50 STC - 8 LBS./SQUARE FOOT

2.4 PANEL FINISH

- A. PANEL FINISH SHALL BE FACTORY APPLIED, CLASS "A" RATED MATERIAL. FINISH SHALL BE: DESIGN TEX SEABISCUIT COLOR, OMEGA 110701-010
1. OP-01: WALL COVERING AND UPHOLSTERY FABRIC WITH SURFACE TREATMENT TO RESIST STAINS.
B. PANEL TRIM: EXPOSED PANEL TRIM OF ONE CONSISTENT COLOR:
1. OP-01: SAND SW6141

2.5 SOUND SEALS

- A. VERTICAL INTERLOCKING SOUND SEALS BETWEEN PANELS: ROLL-FORMED STEEL ASTRAGALS, WITH REVERSIBLE TONGUE AND GROOVE CONFIGURATION IN EACH PANEL EDGE FOR UNIVERSAL PANEL OPERATION. RIGID PLASTIC ASTRAGALS OR ASTRAGALS IN ONLY ONE PANEL EDGE ARE NOT ACCEPTABLE.
B. HORIZONTAL TOP SEALS: CONTINUOUS CONTACT EXTRUDED VINYL BULB SHAPE WITH PAIRS OF NON-CONTACTING VINYL FINGERS TO PREVENT DISTORTION WITHOUT THE NEED FOR MECHANICALLY OPERATED PARTS.
C. HORIZONTAL BOTTOM FLOOR SEALS SHALL BE:
1. OP-01: MODERNFOLD IC2 BOTTOM SEAL, MANUALLY ACTIVATED OPERABLE BOTTOM SEALS WITH REMOVABLE HANDLE PROVIDING NOMINAL 2-INCH (51MM) OPERATING CLEARANCE WITH AN OPERATING RANGE OF +0.50-INCH (13MM) TO -1.50-INCH (38MM). SEAL SHALL BE OPERABLE FROM PANEL EDGE OR FACE.

2.6 SUSPENSION SYSTEM

- A. OP-01: #17 SUSPENSION SYSTEM - "SMART TRACK™"
1. SUSPENSION TRACKS: MINIMUM 11-GAUGE, 0.12-INCH (3.04MM) ROLL-FORMED STEEL TRACK, SUITABLE FOR EITHER DIRECT MOUNTING TO A WOOD HEADER OR SUPPORTED BY ADJUSTABLE STEEL HANGER BRACKETS, SUPPORTING THE LOAD-BEARING SURFACE OF THE TRACK, CONNECTED TO STRUCTURAL SUPPORT BY PAIRS OF 0.38-INCH (10MM) DIAMETER THREADED RODS. ALUMINUM TRACK IS NOT ACCEPTABLE.
A. EXPOSED TRACK SOFFIT: STEEL, INTEGRAL TO TRACK, AND PRE-PAINTED OFF-WHITE.
2. CARRIERS: TWO ALL-STEEL TROLLEYS WITH STEEL TIRED BALL BEARING WHEELS. NON-STEEL TIRES ARE NOT ACCEPTABLE. SUSPENSION SYSTEM SHALL PROVIDE AUTOMATIC INDEXING OF PANELS INTO STACK AREA USING PREPROGRAMMED SWITCHES AND TROLLEYS WITHOUT ELECTRICAL, PNEUMATIC, OR MECHANICAL ACTIVATION.

2.7 OPTIONS

- A. SINGLE PASS DOORS:
1. OP-01: MATCHING PASS DOOR SAME THICKNESS AND APPEARANCE AS PANELS. ADA COMPLIANT PASS DOOR TO BE TRIMLESS AND EQUIPPED WITH FRICTION LATCH AND FLUSH PULLS FOR PANIC OPERATION. NO THRESHOLD WILL BE PERMITTED.

PART 3: EXECUTION

3.1 INSTALLATION

- A. GENERAL: COMPLY WITH ASTM E557, OPERABLE PARTITION MANUFACTURER'S WRITTEN INSTALLATION INSTRUCTIONS, DRAWINGS AND APPROVED SHOP DRAWINGS.
B. INSTALL OPERABLE PARTITIONS AND ACCESSORIES AFTER OTHER FINISHING OPERATIONS, INCLUDING PAINTING HAVE BEEN COMPLETED.
C. MATCH OPERABLE PARTITIONS BY INSTALLING PANELS FROM MARKED PACKAGES IN NUMBERED SEQUENCE INDICATED ON SHOP DRAWINGS.
D. BROKEN, CRACKED, CHIPPED, DEFORMED OR UNMATCHED PANELS ARE NOT ACCEPTABLE.

3.2 CLEANING AND PROTECTION

- A. CLEAN PARTITION SURFACES UPON COMPLETING INSTALLATION OF OPERABLE PARTITIONS TO REMOVE DUST, DIRT, ADHESIVES, AND OTHER FOREIGN MATERIALS ACCORDING TO MANUFACTURER'S WRITTEN INSTRUCTIONS.
B. PROVIDE FINAL PROTECTION AND MAINTAIN CONDITIONS IN A MANNER ACCEPTABLE TO THE MANUFACTURER AND INSTALLER THAT INSURE OPERABLE PARTITIONS ARE WITHOUT DAMAGE OR DETERIORATION AT TIME OF SUBSTANTIAL COMPLETION.

3.3 ADJUSTING

- A. ADJUST OPERABLE PARTITIONS TO OPERATE SMOOTHLY, EASILY, AND QUIETLY, FREE FROM BINDING, WARP, EXCESSIVE DEFLECTION, DISTORTION, NONALIGNMENT, MISPLACEMENT, DISRUPTION, OR MALFUNCTION, THROUGHOUT ENTIRE OPERATIONAL RANGE. LUBRICATE HARDWARE AND OTHER MOVING PARTS.

3.4 EXAMINATION

- A. EXAMINE FLOORING, STRUCTURAL SUPPORT, AND OPENING, WITH INSTALLER PRESENT, FOR COMPLIANCE WITH REQUIREMENTS FOR INSTALLATION TOLERANCES AND OTHER CONDITIONS AFFECTING PERFORMANCE OF OPERABLE PARTITIONS. PROCEED WITH INSTALLATION ONLY AFTER UNSATISFACTORY CONDITIONS HAVE BEEN CORRECTED.

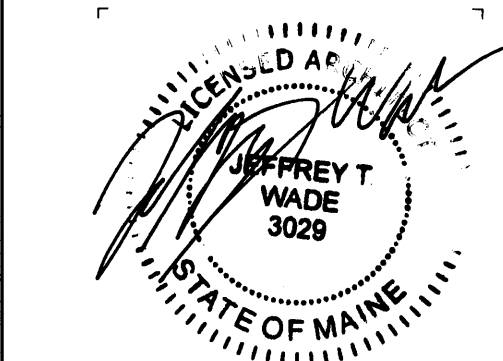
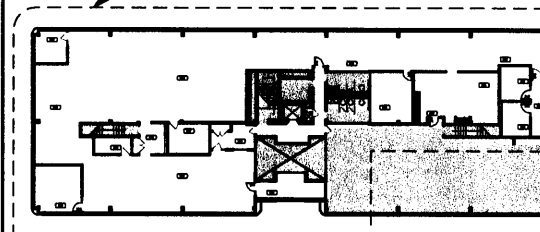
3.5 DEMONSTRATION

- A. DEMONSTRATE PROPER OPERATION AND MAINTENANCE PROCEDURES TO OWNER'S REPRESENTATIVE.
B. PROVIDE OPERATION AND MAINTENANCE MANUAL TO OWNER'S REPRESENTATIVE.

56 NORTHPORT DRIVE
(1361 WASHINGTON AVENUE)
PORTLAND, ME



PROJECT SCOPE



311 SUMMER STREET BOSTON, MA 02210 617.234.3100

ISSUANCES

No.	Description	Date
1	ISSUED FOR PERMIT	12/23/08

Checked by: JE

Conditions of Contract & Specifications

Drawing Scale: N.T.S.

Job No. 08121.00

IN-003