

THIS DOCUMENT IS THE PERSONAL PROPERTY AND COPYRIGHT OF NEXIUS AND FOR THE EXCLUSIVE USE OF THE CLIENT. IT IS NOT TO BE REPRODUCED OR TRANSMITTED IN ANY FORM OR BY ANY MEANS, WITHOUT THE EXPRESS WRITTEN CONSENT OF THE CREATOR IS STRICTLY PROHIBITED.
DRAWING SCALES ARE INTENDED FOR 24"x36" SIZE PRINTED SIZES. UNLESS OTHERWISE SPECIFIED, ALL DIMENSIONS ARE DEEMED "NOT TO SCALE".

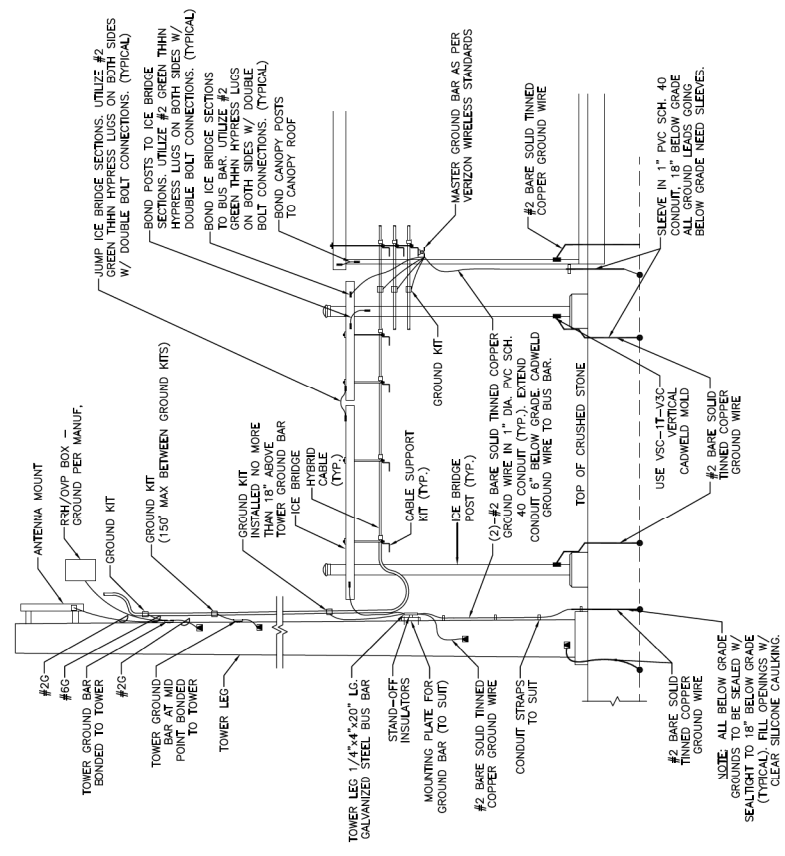
REV	DATE	DESCRIPTION	BY
A	08/29/15	FOR REVIEW	JM
B	03/09/16	REVISED EQUIPMENT	JM
C	07/25/16	REVISED PER SV	JM

SITE INFO:
SITE NAME: **PORTLAND_10_ME**
LOCATION CODE: **381332**
SITE ADDRESS: **81 NORTHPORT DRIVE
PORTLAND, ME 04103
CUMBERLAND COUNTY**

SHEET TITLE: GROUNDING PLAN, DETAILS & NOTES	
NEXIUS PROJ. NO.: VZ11509	SHEET NUMBER: E-3
CHECKED BY: MS	
CHECKED BY DATE: 03/09/16	

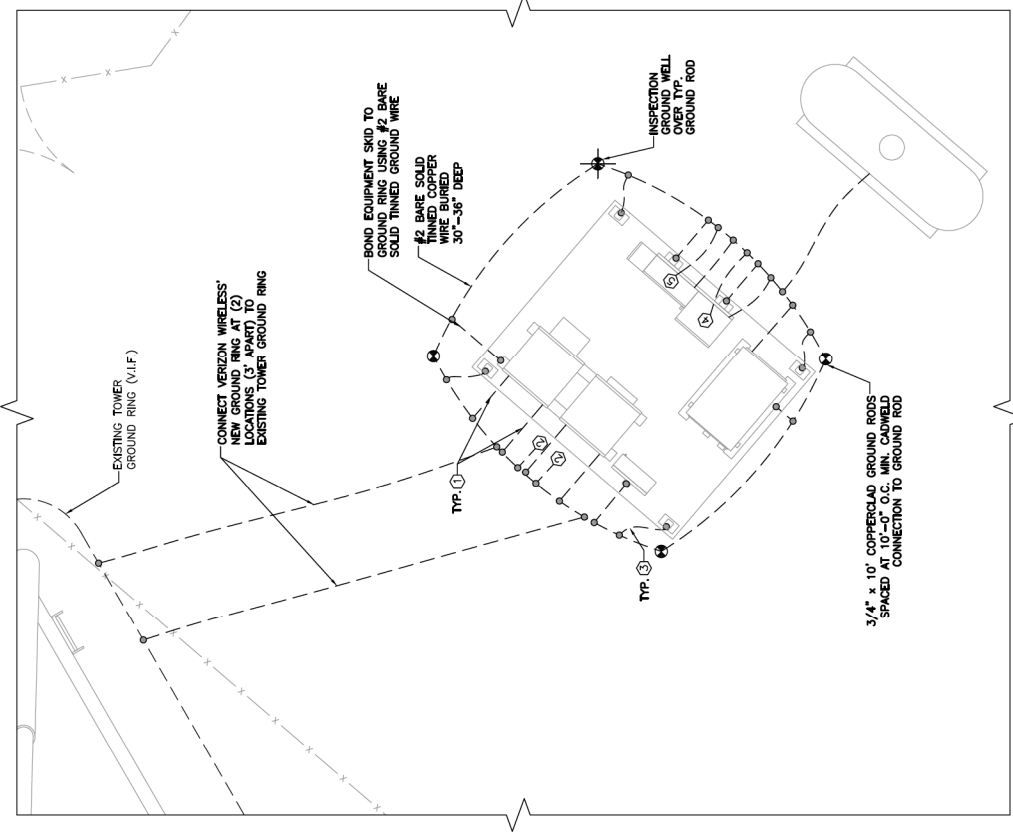
- NOTES**
- ALL ENDS OF CONDUIT SHALL BE SEALED WITH A FOAM SEALANT AFTER WIRES AND CABLES ARE INSTALLED.
 - ALL EQUIPMENT GROUND LEADS, CORNER GROUNDING, EXTERIOR GROUND BAR, TO BE #2 TINNED SOLID TO GROUND RING.
 - IF EXISTING GROUND RING IS ACCIDENTALLY DISCONNECTED AT ANY POINT, REPAIR OR RECONNECT IT SHALL BE RECONNECTED VIA CADWELD.

- LEGEND**
- 3/4" x 10' COPPERCLAD GROUND ROD SPACED AT 10'-0" O.C. MIN. CADWELD CONNECTION TO GROUND ROD
 - VERTICAL CADWELD MOLD CONNECTION
 - INSPECTION WELL SEE DETAIL DWG
 - CADWELD CONNECTION TO TOWER



- NOTES:**
- CONTRACTOR SHALL ADD ADDITIONAL GROUND RODS & CONDUCTORS OR APPROVED GROUND ENHANCING MATERIAL TO ACHIEVE LESS THAN 5 OHMS RESISTANCE TO GROUND.
 - MAXIMUM VERTICAL/HORIZONTAL DISTANCE BETWEEN CABLE GROUNDING POINTS SHALL BE 50' PER FIELD CONDITIONS. ADDITIONAL KITS AS REQUIRED BY FIELD CONDITIONS.
 - GROUND ALL EQUIPMENT AT ANTENNAS AS REQUIRED BY MANUFACTURER.

② **TYPICAL GROUNDING RISER DIAGRAM**
SCALE: N.T.S.



① **GROUNDING PLAN**
SCALE: N.T.S.

- GROUNDING CONNECTIONS**
- EQUIPMENT CABINET GROUND WIRE #2 BARE SOLID TINNED COPPER GROUND WIRE, (2) PER CABINET, FASTENED TO CONCRETE PAD.
 - MASTER BUS BAR, (2) #2 BARE SOLID TINNED COPPER GROUND WIRE.
 - ICE BRIDGE POST & CANOPY POST GROUND, #2 BARE SOLID TINNED COPPER GROUND WIRE.
 - INTERIOR TELCO CABINET EGB, #2 BARE SOLID TINNED COPPER GROUND WIRE.
 - MAIN DISCONNECT SWITCH GROUNDING #2 BARE SOLID TINNED COPPER GROUND WIRE.