

- LEGEND**
- PENDENT ON A DROP W/ 2 PIECE DEEP ESCUTCHEON
 - RECESSED PENDENT ON A 1" DROP
 - CONCEALED PENDENT SPRINKLER ON A 1" DROP
 - RISE OR DROP
 - GROOVED RIGID COUPLING
 - (X-X) CEILING HEIGHT
 - HANGER
 - - - EXISTING PIPE
 - TW < X'-X" TOP OF WALL FRAMING TO CENTERLINE
 - BB < X'-X" BOTTOM OF BEAM TO PIPE CENTERLINE

GENERAL NOTES

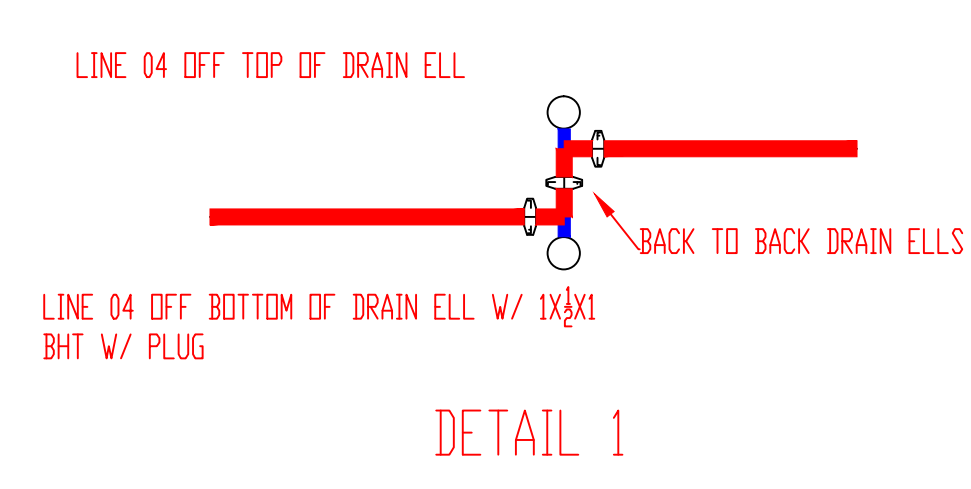
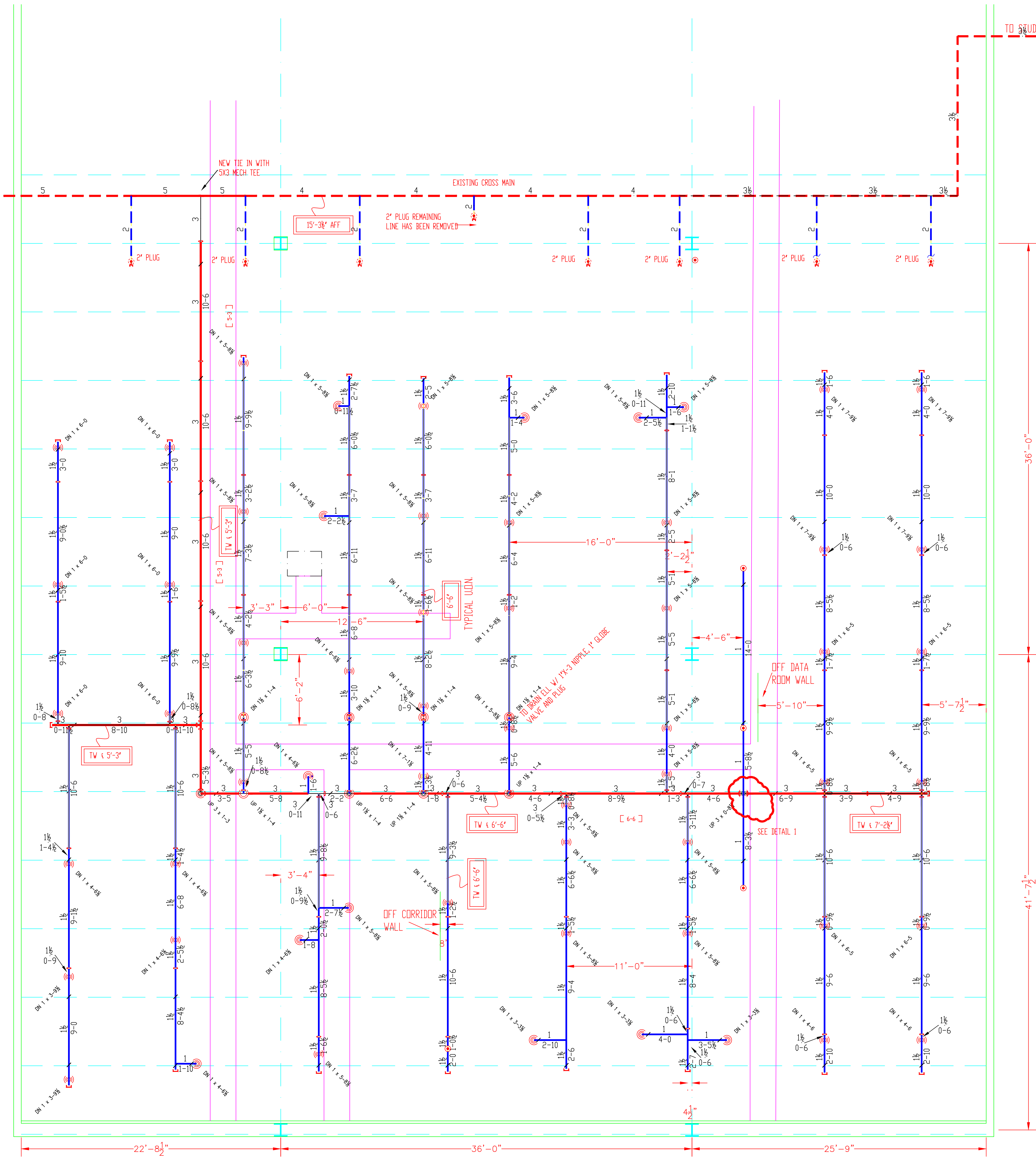
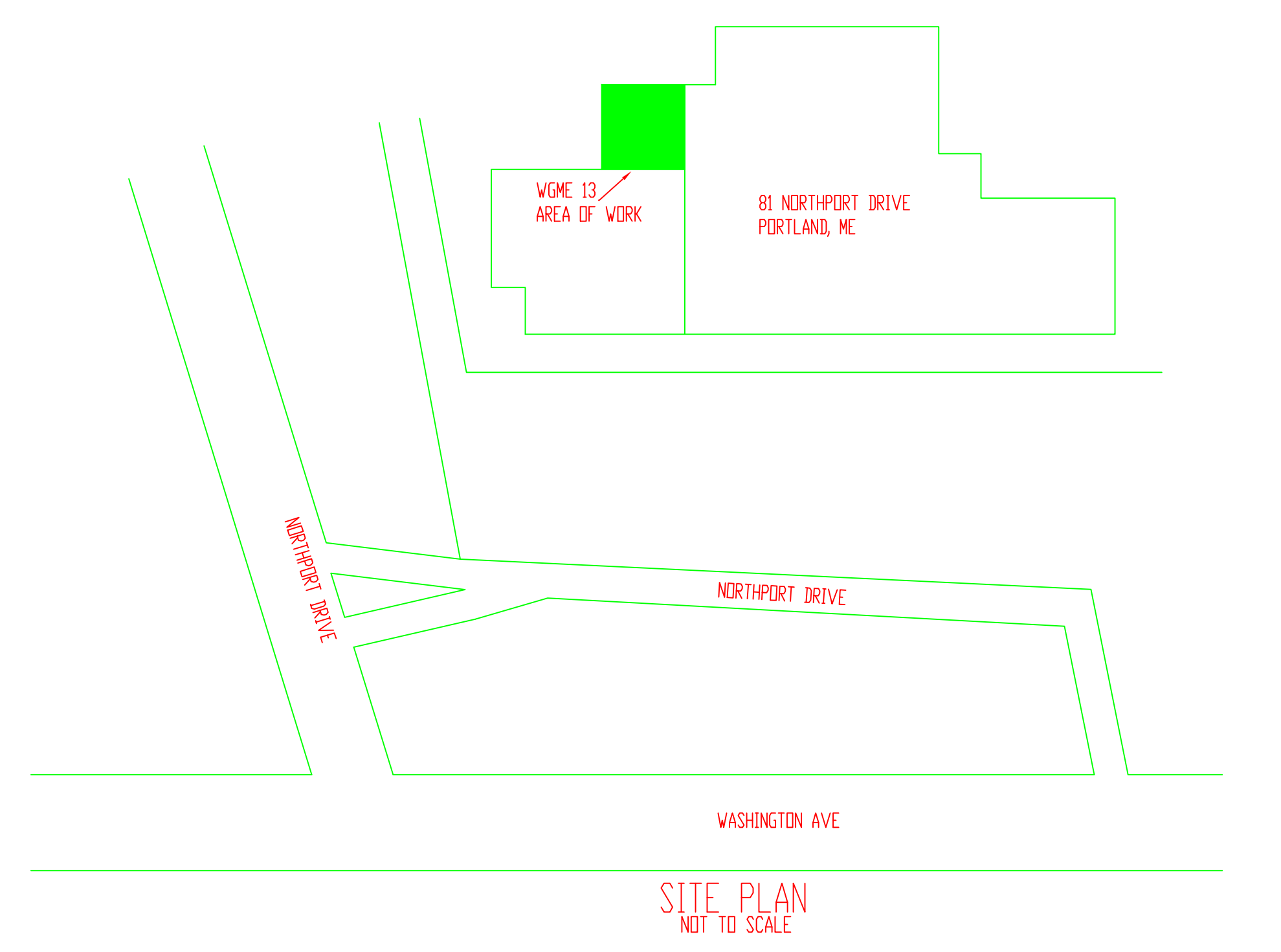
ALL 1" PIPE IS TO BE THREADED SCH. 40 BLACK STEEL U/N
 ALL 3" & 1 1/2" PIPE IS TO BE GROOVED SCH. 10 BLACK STEEL U/N
 ALL THREADED PIPE FITTINGS ARE TO BE BLACK CAST IRON, CLASS 125 U/N
 DIMENSIONS SHOWN ON THREADED PIPE ARE CENTER TO CENTER U/N
 SUFFICIENT HEAT TO PREVENT FREEZING OF THE WET PIPE SPRINKLER SYSTEM IS REQUIRED TO BE FURNISHED BY THE BUYER/OWNER.

SYSTEM CLASSIFICATION

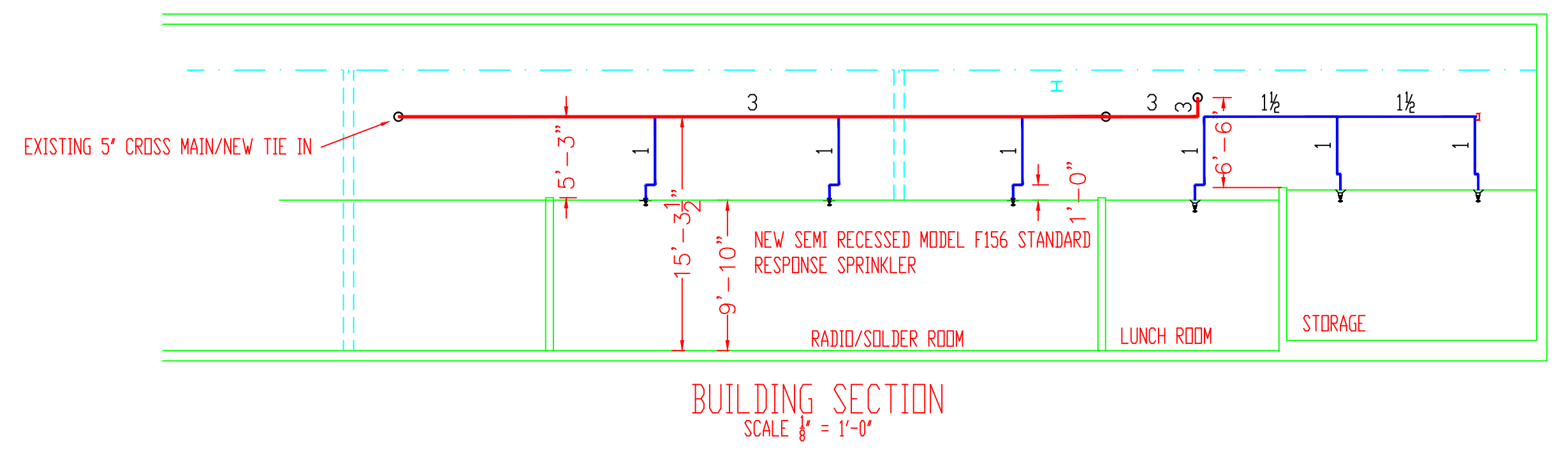
THE WET PIPE SYSTEM OF AUTOMATIC SPRINKLERS IS EXISTING THROUGHOUT THE BUILDING. SYSTEM IS A SCHEDULE SYSTEM. AREA OF WORK IS DESIGNED IN ACCORDANCE WITH NFPA-13, STANDARD FOR THE INSTALLATION OF SPRINKLER SYSTEMS, 2007 EDITION.
 ORDINARY HAZARD GROUP 1 FOR ALL STORAGE, DATA, MECH AND EQUIPMENT ROOMS
 LIGHT HAZARD FOR ALL OFFICE AREAS.

SCOPE OF WORK

RECONNECT AND UPGRADE EXISTING WET PIPE SYSTEM OF AUTOMATIC SPRINKLERS THROUGHOUT EXISTING AREAS OF 81 NORTHPORT DRIVE, PORTLAND, MAINE, MAINTAINING EXISTING ORDINARY HAZARD PIPE SCHEDULE SYSTEM.



FITTERS NOTES:
 ALL ELEVATIONS ARE OFF TOP OF WALL FRAMING
 LINES 104, 107, 106, 109 TO HAVE DRAIN VALVES ON 1 1/2" DRAIN ELLS



SYSTEM LAYOUT
SCALE 1/4" = 1'-0"

- HEAD LEGEND**
- 12 RELIABLE MODEL F156 WHITE PENDENT
155' SEMI RECESSED WHITE ESCUTCHEON MODEL F2
STANDARD RESPONSE, STANDARD COVERAGE
K=5.6, 1/2" NPT, SIN RA1214
 - 15 RELIABLE MODEL G4 CONCEALED PENDENT
135 DEGREE WHITE COVER PLATE
STANDARD RESPONSE, STANDARD COVERAGE
K=5.6, 1/2" NPT, SIN RA1425
 - 34 RELIABLE MODEL F156 WHITE PENDENT
155' 2 PIECE DEEP WHITE ESCUTCHEON MODEL HB
QUICK RESPONSE, STANDARD COVERAGE
K=5.6, 1/2" NPT, SIN RA1425

DEAN & ALLYN, INC.
 FIRE PROTECTION • SPECIAL HAZARD
 116 LEWISTON ROAD, GRAY, MAINE 04039
 (207)657-5646 FAX:(207)657-5647

		DANA A. STEWART NICET IV - #064544		DRAWING TITLE: SPRINKLER LAYOUT		SUBMITTAL	
DATE:		SURVEYED BY: SEC 3/16/15		JOB:		NO. OF SPRINKLERS SHOWN ON THIS SHEET: 0	
APPROVED BY:		DRAWN BY: SEC 3/19/15		81 NORTHPORT DRIVE PORTLAND, ME 04103		NO. OF SPRINKLERS ON JOB: 61	
CHECKED BY: DAS 3/15		AT DEAN & ALLYN, INC		CONTRACT WITH: OWNER		CONTRACT NO.: C151257	
SCALE 1/4"=1'-0" U/N		SHEET NO. 1 OF 2		CONTACT CRAIG CLARK			
SUBMIT FOR APPROVAL 3/30/15		REVISIONS:		DATE:			