

GENERAL STRUCTURAL NOTES

- 1. ALL WORK SHALL CONFORM TO THE REQUIREMENTS OF ALL APPLICABLE STATE AND LOCAL CODES, INCLUDING BUT NOT LIMITED TO:
- IRC BUILDING CODE 2003 ED
- AISC 360-10
- AISC 301-10
- AISC 308-10
- AISC 358-10
- AISC 341-10
- AISC 884-10
- AISC 159-10
- AISC 159-10
- AISC 308-10
- AISC 308-10

GENERAL STRUCTURAL NOTES CONT.

- 7. THESE DRAWINGS SHALL BE USED IN CONJUNCTION WITH ANY ARCHITECTURAL, MECHANICAL, AND ELECTRICAL DRAWINGS, IN ACCORDANCE WITH THE REQUIREMENTS OF THE AISC 360-10. THE CONTRACTOR SHALL BE RESPONSIBLE FOR LOCATING THESE ITEMS.
8. ALL DIMENSIONS, RELATIONS, AND CONDITIONS SHALL BE AS SHOWN ON THESE DRAWINGS. ANY DISCREPANCIES SHALL BE BROUGHT TO THE ATTENTION OF THE ENGINEER FOR CLARIFICATION BEFORE PROCEEDING WITH THE AFFECTED PART OF THE WORK.
9. UNLESS OTHERWISE NOTED, DETAILS, SECTIONS, AND NOTES SHALL BE IN ACCORDANCE WITH THE AMERICAN WELDING SOCIETY 'STRUCTURAL WELDING CODE', AWS D1.1, LATEST EDITION.

STRUCTURAL STEEL NOTES

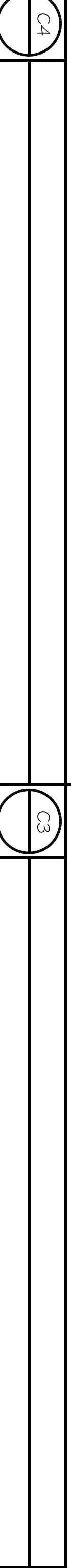
- 1.00 GENERAL
1.01 QUALIFICATIONS
1.02 SUBMITTALS
1.03 PRODUCT HANDLING
PART 3 - EXECUTION
3.01 FABRICATION
3.02 PAINTING

STRUCTURAL STEEL NOTES CONT.

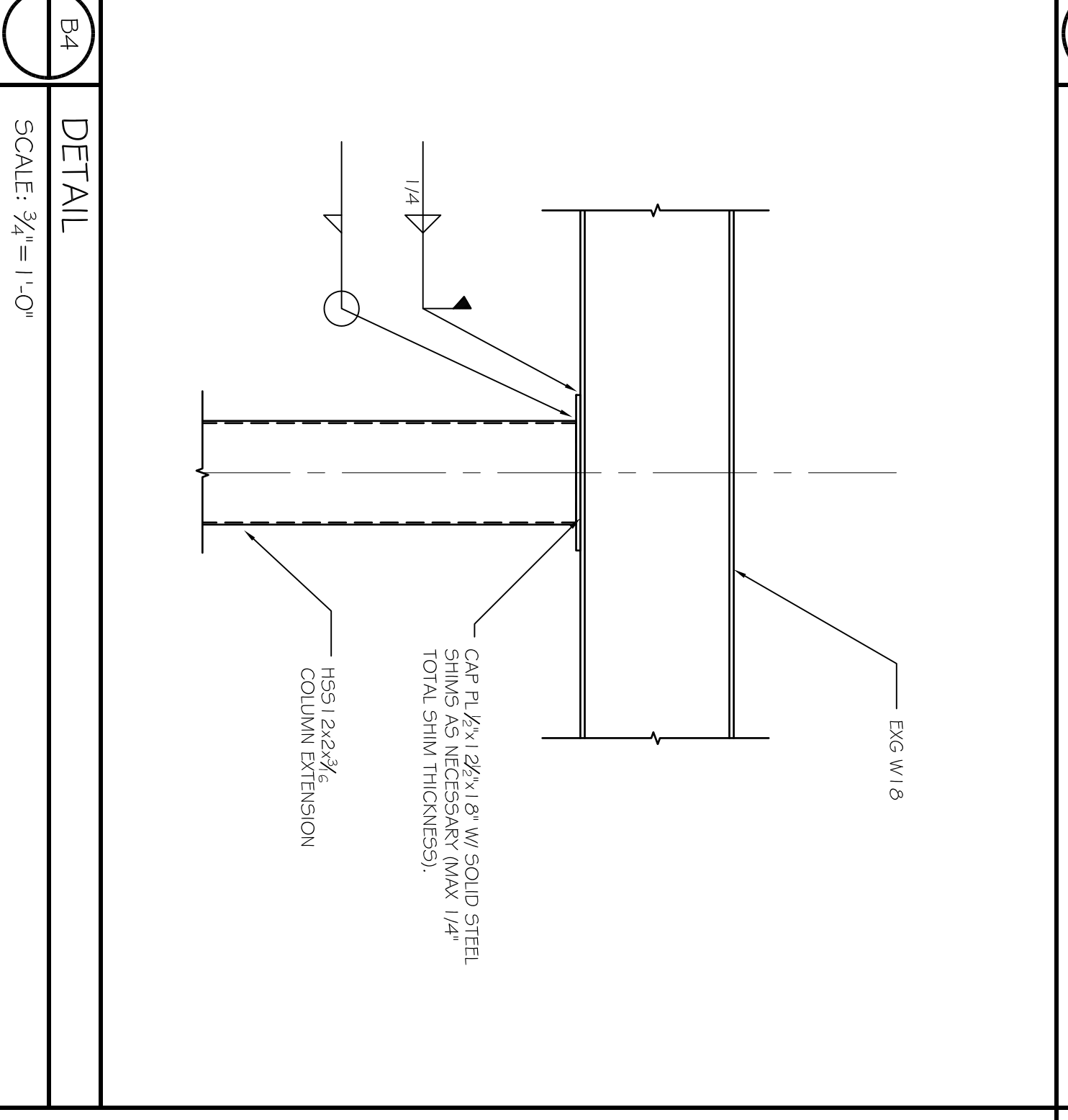
- 3.02 PAINTING
A. SURFACE PREPARE ALL FABRICATED STEEL TO RECEIVE SHOP PAINT (UNTIL TO A MINIMUM OF HAND TOOL CLEAN OR TIME OF PAINTING).
B. PROVIDE BRUSH BLAST OR HANDTOOL SURFACE PREP FOR ALL FABRICATION TO RECEIVE A TOP COAT OF PAINT.

STRUCTURAL STEEL NOTES CONT.

- 3.02 EXECUTION
A. FABRICATE STRUCTURAL STEEL IN ACCORDANCE WITH THE REQUIREMENTS OF THE DRAWINGS AND THIS SECTION OF THE SPECIFICATIONS.

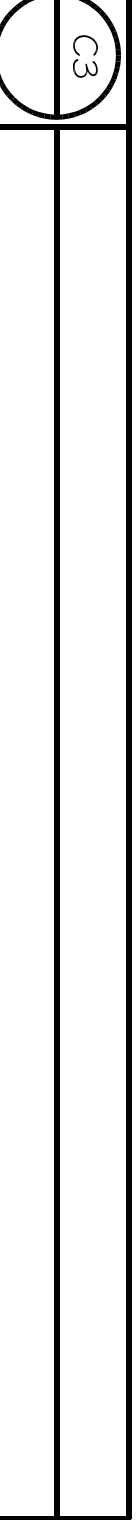


C4

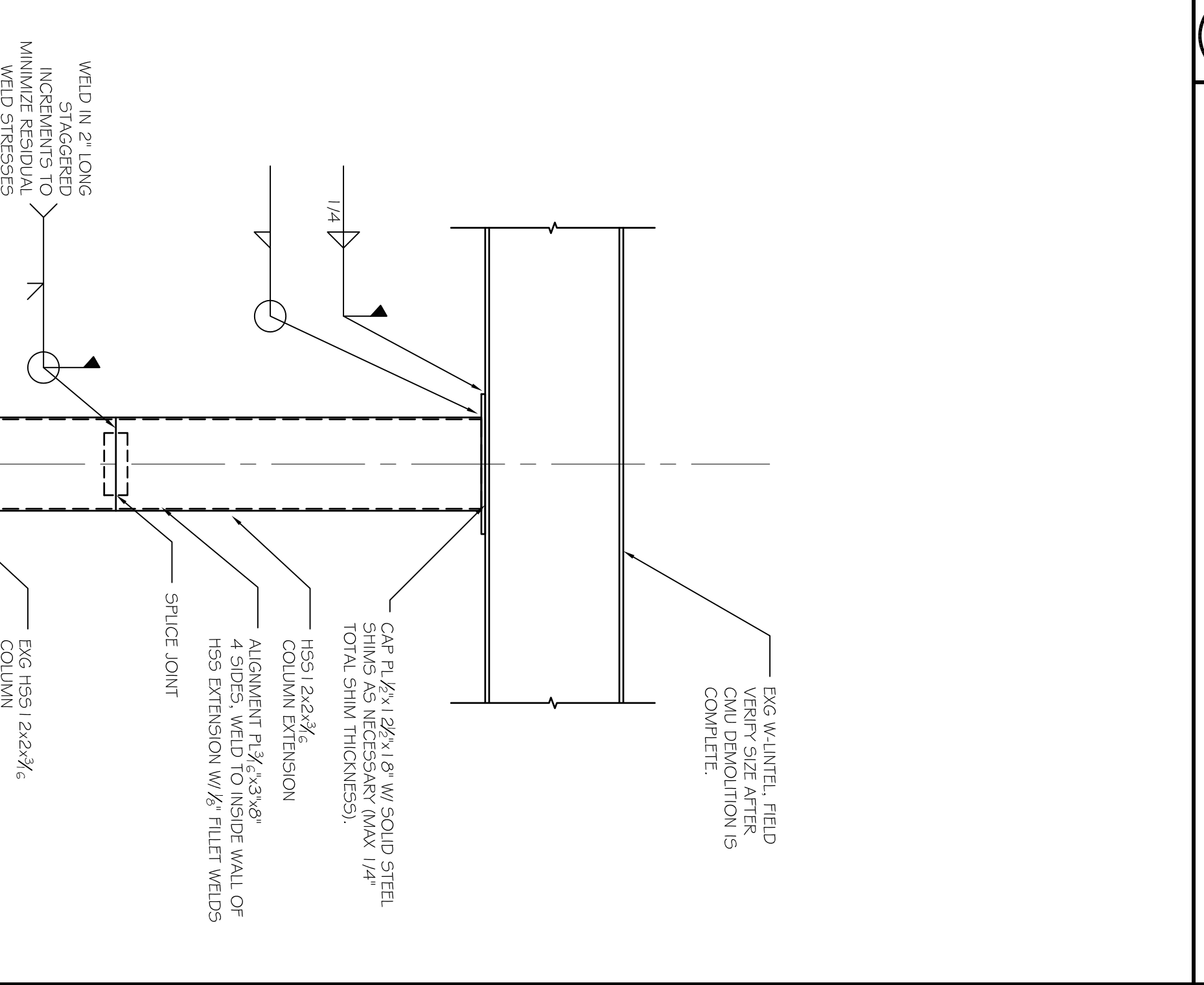


B4

DETAIL
SCALE: 3/4" = 1'-0"

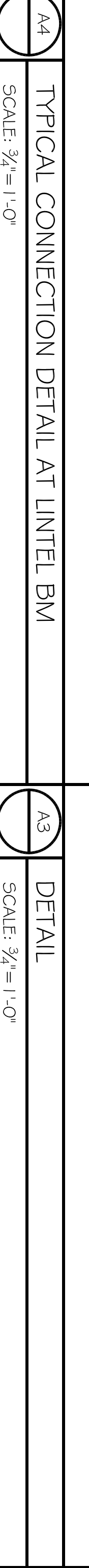


C3



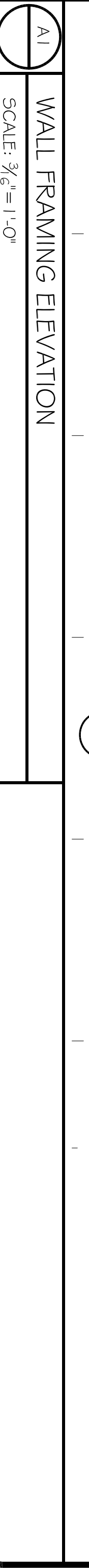
A3

DETAIL
SCALE: 3/4" = 1'-0"



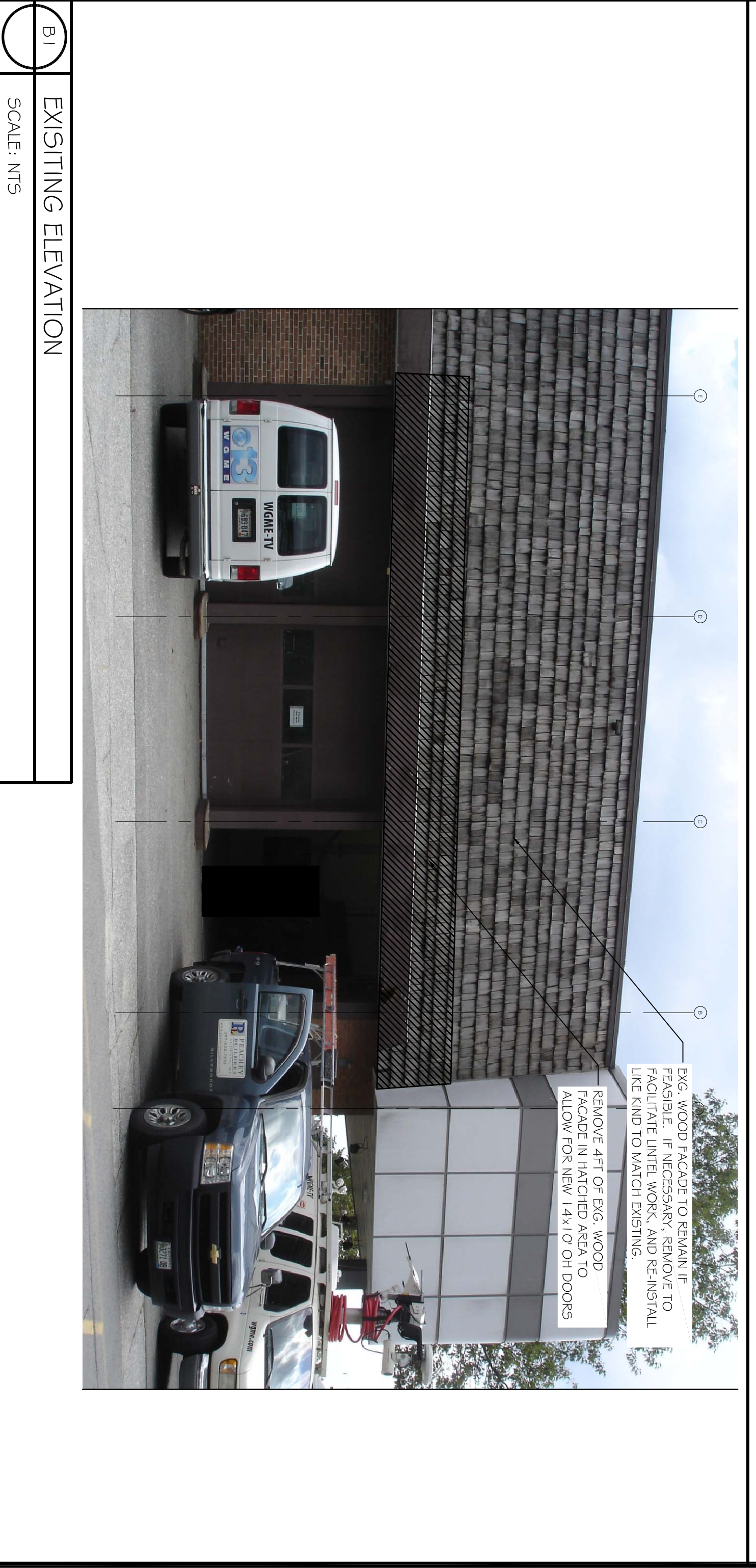
A4

TYPICAL CONNECTION DETAIL AT LINTEL BM
SCALE: 3/4" = 1'-0"



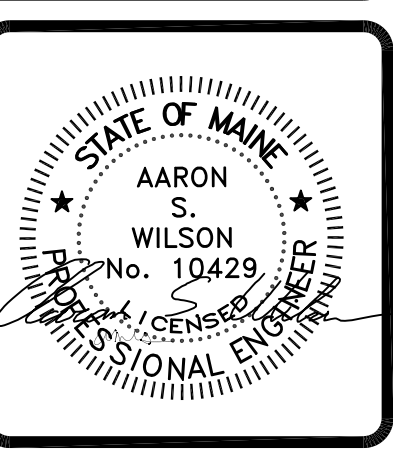
A1

WALL FRAMING ELEVATION
SCALE: 3/8" = 1'-0"



B1

EXISTING ELEVATION
SCALE: NTS



ASSOCIATED DESIGN PARTNERS INC.
80 Leighton Road, Falmouth, Maine 04105
Office: (207) 878-1751
Fax: (207) 878-1788
E-Mail: adp@adpengineering.com

THE DRAWING, DESIGN AND SPECIFICATIONS ARE THE PROPERTY OF ASSOCIATED DESIGN PARTNERS, INC. NO PART OF THIS DOCUMENT OR OTHER USE OF THIS DOCUMENT WITHOUT WRITTEN CONSENT IS FORWARDED.

PROJECT: WGME CHANNEL 13 PORTLAND, MAINE FOR: PEACHY BUILDERS
SHEET TITLE: NOTES AND DETAILS ISSUED FOR PERMITTING

Table with columns: DATE, REVISIONS DESCRIPTION, BY, NO.

DATE: 8-2-13
SCALE: 3/8" NOTED
DESIGN BY: ASW
DRAWN BY: BSC
PROJECT NUMBER: 13185
SHEET NO: S102