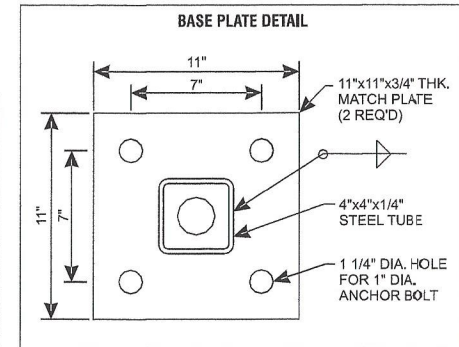
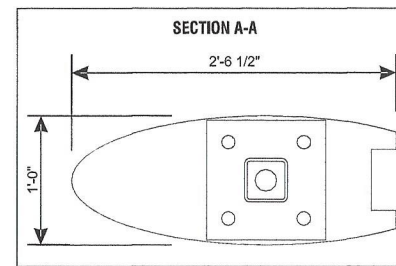
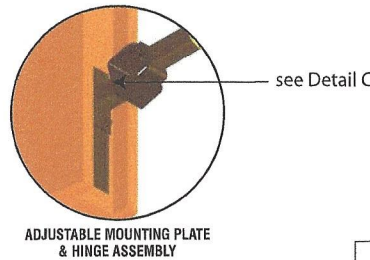
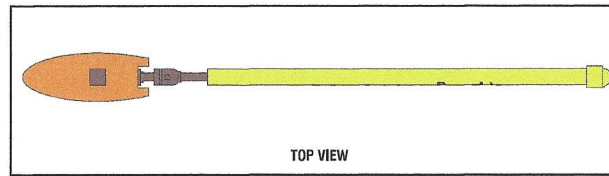
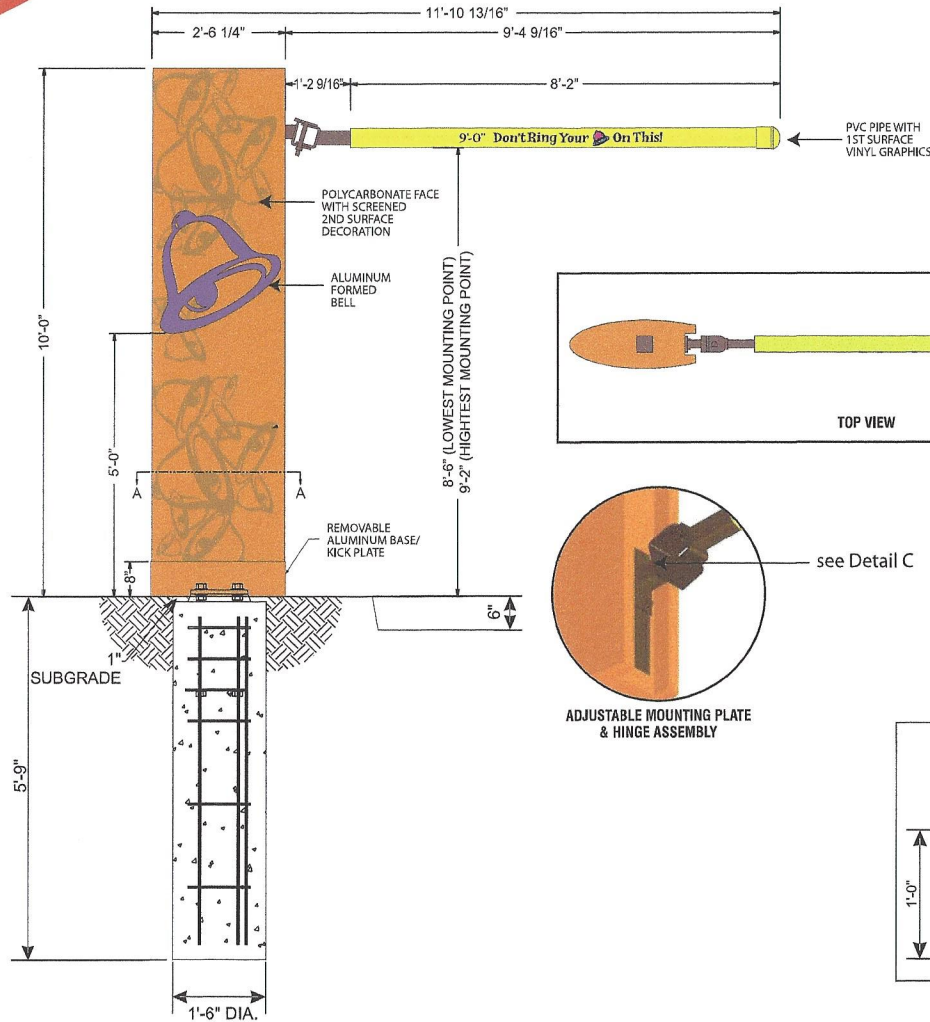


(H)

Yum! Brands®

# EVOLUTION DRIVE THRU PORTAL



## SIGN SPECIFICATIONS

### Materials

Polycarbonate face with screened decoration - 2nd surface.  
 Aluminum formed bell.  
 Removable shroud.  
 PVC pipe with vinyl graphics applied 1st surface.

## ELECTRICAL SPECIFICATIONS

N/A

## COLOR SPECIFICATIONS

Polycarbonate Cladding:  
 Screen second surface: Amber Wave SW6657  
 Bell Graphics: Screen second surface  
 Light Bell: PMS 131U  
 Dark Bell: PMS 139U  
 Hinge Assembly  
 TB Bronze Tiger Drylac 49-66230 C33  
 Metal Bell: Paint to Match PMS 2685  
 Clearance Bar: Paint to match PMS 108

PART #823-NI-PORTAL-SHROUD  
 PART #823-NI-PORTAL-KIT



THIS IS AN ORIGINAL UNPUBLISHED DRAWING CREATED FOR YOUR PERSONAL USE IN CONNECTION WITH A PROJECT PLANNED FOR YOU BY CUMMINGS. IT IS NOT TO BE SHOWN OUTSIDE YOUR ORGANIZATION NOR USED, REPRODUCED, COPIED OR EXHIBITED IN ANY FASHION UNLESS AUTHORIZED IN WRITING BY AN OFFICER OF CUMMINGS.

CUSTOMER APPROVAL:

DATE:

Rev. #1	DATE	BY	Rev. #4	DATE	BY
Rev. #2	2-13-17	T. Pickel	Rev. #5		
Rev. #3	2-23-17	T. Pickel	Rev. #6		



1363 WASHINGTON AVE.,  
 PORTLAND, ME

DRAWING NO:  
 81840.04

ARTIST: T.Pickel DATE: 1-22-16  
 SHEET: 10 OF 13

THIS DESIGN REMAINS OUR EXCLUSIVE PROPERTY AND CANNOT BE DUPLICATED WITHOUT WRITTEN CONSENT