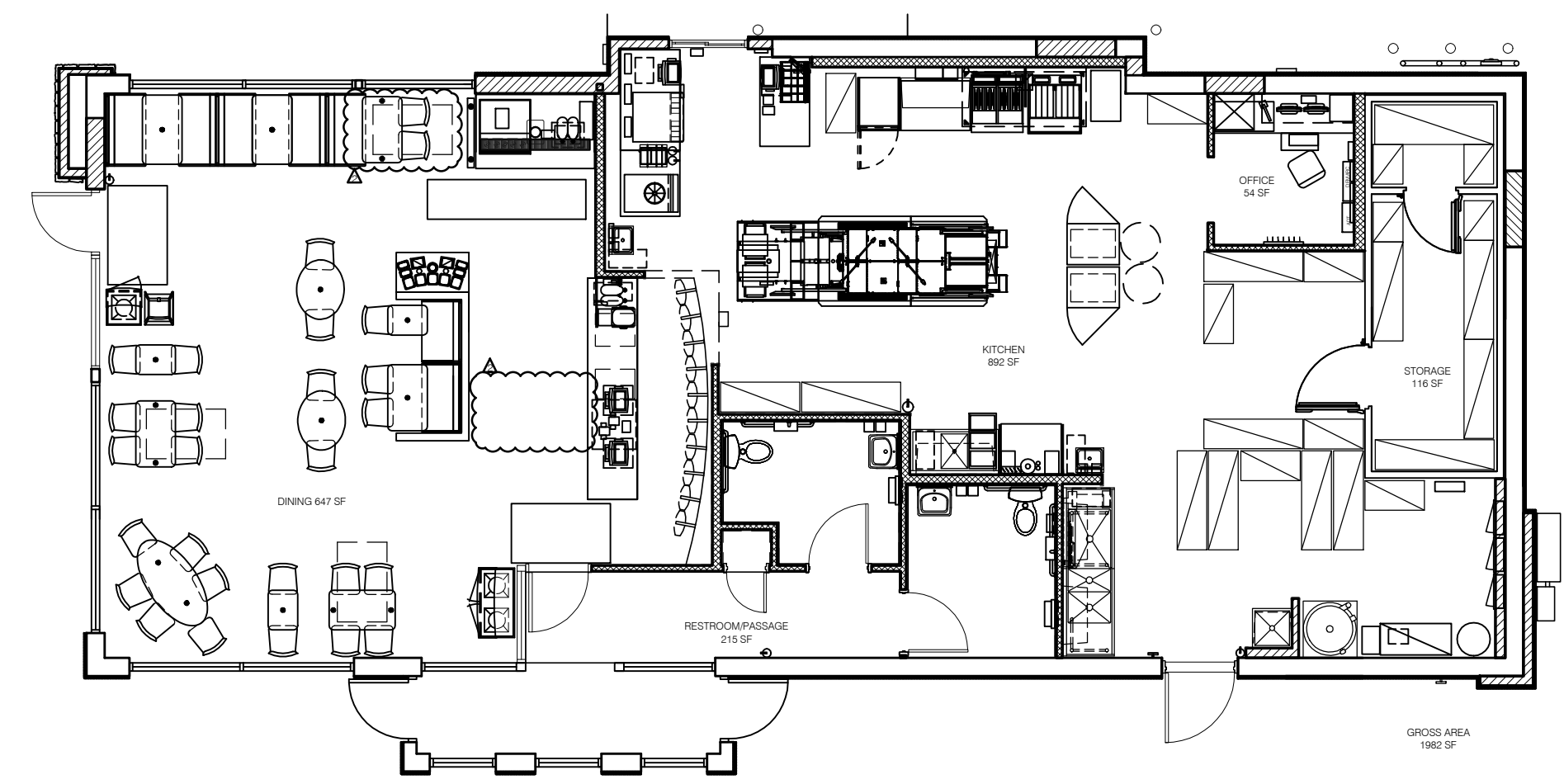


**LEGEND**

6	# OCCUPANTS - EXIT FACTOR = 0.2
32"	EXIT WIDTH REQUIRED (OCC. X 0.2 EXIT FACTOR OR 32" MIN)
40"	EXIT WIDTH PROVIDED

— DENOTES ADA ACCESSIBLE SPACE

**FLOOR PLAN** 1/4"=1'-0" **A**



GROSS FLOOR AREA: 2,190 S.F.

	AREA	ALLOWANCE	LOAD	EGRESS WIDTH PER OCCUPANT	EGRESS WIDTH REQUIRED	ACTUAL WIDTH SHOWN
ASSEMBLY UNCONCENTRATED	523 S.F.	1004.7 - FIXED SEATING 15 S.F./OCCUPANT	40 OCCUPANTS	.2"	32" min	34"
ASSEMBLY STANDING	124 S.F.	5 S.F./OCCUPANT	25 OCCUPANTS	.2"	32" min	34"
KITCHEN COMMERCIAL	1062 S.F.	200 S.F./OCCUPANT	6 OCCUPANTS	.2"	32" min	40"
<b>TOTAL OCCUPANT LOAD</b>			<b>71 OCCUPANTS</b>			

**OCCUPANT LOAD** **E**

**CODE REVIEW (NON-SPRINKLERED BUILDING)**

**FACILITY NAME:** TACO BELL  
**STATE:** MAINE  
**CITY:** PORTLAND  
**COUNTY:** CUMBERLAND

**LOCAL BUILDING INSPECT DEPT.:** CITY OF PORTLAND  
**APPLICABLE CODES:** SEE SHEET T1.0  
**BUILDING OCCUPANCY CLASSIFICATION:** A-2  
**BUILDING CONSTRUCTION TYPE:** V-B  
**AUTOMATIC SPRINKLERS:** NONE REQUIRED. REFER TO 903.2.1.2 - IBC 2012. FEWER THAN 100 OCCUPANTS

**ALLOWED AREA:** 6,000 S.F.  
**ACTUAL AREA:** 1982 S.F.  
**ALLOWED HT.:** 40 FT.  
**ACTUAL HT.:** 23 FT.  
**ALLOWED STORIES:** 1  
**ACTUAL STORIES:** 1

**FIRE RESISTIVE REQUIREMENTS**

- STRUCTURAL FRAME: 0
- BEARING WALLS (INTERIOR & EXTERIOR): 0
- FLOOR CONSTRUCTION: 0
- ROOF CONSTRUCTION: 0
- NON-BEARING WALLS (INTERIOR & EXTERIOR): 0

**INTERIOR FINISHES** CLASS C

**PORTABLE FIRE EXTINGUISHERS**

REF TO LOCATIONS IDENTIFIED ON PLAN  
 PROVIDE FOUR (4) FIRE EXTINGUISHERS - (2) 10LBS B,C; (1) 10LBS A,B,C; AND (1) 10LBS TYPE K.

TYPE "A" - 1500 S.F./UNIT "A" - UNITS REQUIRED = 2-A  
 "A" - UNITS PROVIDED = 2-A  
 TYPE "B" - 30 FT. OF TRAVEL "B" - UNITS REQUIRED = 10-B x (3)  
 "B" - UNITS PROVIDED = 10-B x (3)  
 TYPE "C" - SAME AS TYPE "B" HAZARD REQUIREMENTS.  
 TYPE "K" - LOCATED NEAR GREASE COOKING AREA, AS PER NFPA 10.

**OCCUPANT LOAD**

ASSEMBLY (TOTAL): 71  
 EXITS REQUIRED: 2 @ 32" MIN. EACH  
 EXITS PROVIDED: 3 @ 32" MIN. EACH  
 KITCHEN (TOTAL): 6  
 EXITS REQUIRED: 1 @ 32" MIN.  
 EXITS PROVIDED: 1 @ 40"  
 EXIT ACCESS TRAVEL DISTANCE: 200 MAX.  
 REFER TO PLAN: 23' - 47' ACTUAL  
 EXIT COMMON PATH: 75 MAX.  
 REFER TO PLAN: 23' - 47' ACTUAL

**CODE ANALYSIS** N.T.S. **D**

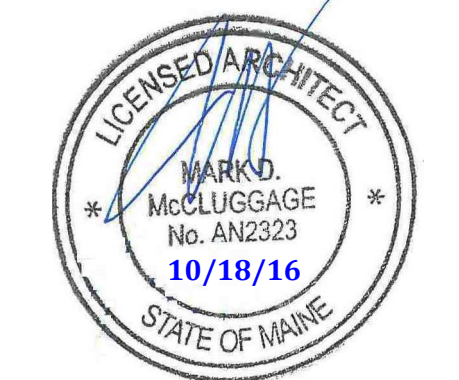
- 1 EMERGENCY LIGHT FROG EYE
- 2 EXIT SIGN, LED UNIVERSAL MOUNT LED. CEILING MOUNT
- 3 EXIT SIGN, LED UNIVERSAL MOUNT LED. WALL MOUNT
- 4 REMOTE BATTERY PACK. WEATHERPROOF EXTERIOR EMERGENCY LIGHTS
- 5 DOORS WITH PANIC HARDWARE INSTALLED.
- 6 EMERGENCY LED.
- 7 10 LBS. TYPE "K" FIRE EXTINGUISHER AS PER NFPA 10.
- 8 2A-10 B,C FIRE EXTINGUISHER. (3,000 S.F. COVERAGE MAX. - 30 FT. TRAVEL DISTANCE).
- 9 10 B,C FIRE EXTINGUISHER. (30 FT. TRAVEL DISTANCE).

**PLAN NOTES** **B**

- 1. EXITS REQUIRED: 2 (2012 IBC 1015.1) (2003 IBC 1018.1)  
EXITS PROVIDED: 4
- 2. AISLE WIDTH REQUIRED: 36" MINIMUM CLEARANCE (2003 IBC 1016.2)  
MINIMUM AISLE WIDTH PROVIDED: 36"
- 3. COMMON PATH LIMIT: 75 L.F. (IBC 1014.3 & 1028.8) (2003 IBC 1018.1)  
COMMON PATH ACTUAL LENGTH: 25'
- 4. TRAVEL DISTANCE LIMIT: 200 FT. (IBC TABLE 1016.1) (2003 IBC 1015.1)  
ACTUAL MAXIMUM TRAVEL DISTANCE: 40'

**GENERAL NOTES** **C**

**MARK D. MCCLUGGAGE AIA, CCS**  
 1525 E. Douglas Wichita, KS 67211  
 Tel: (316) 265-5846  
 Fax: (316) 265-5846  
 www.gimv.com  
 MAINE LIC # PRC02323



15034.000

REVISION 2	10/14/16
------------	----------

CONTRACT DATE: 07.06.2016  
 BUILDING TYPE: CONVERSION  
 PLAN VERSION: FEBRUARY 2015  
 SITE NUMBER: XXX-XXX  
 STORE NUMBER: XXXXX

**TACO BELL**  
 1363 WASHINGTON AVE.  
 PORTLAND, ME



**LIFE SAFETY PLAN**

**LS1.0**

PLOT DATE: