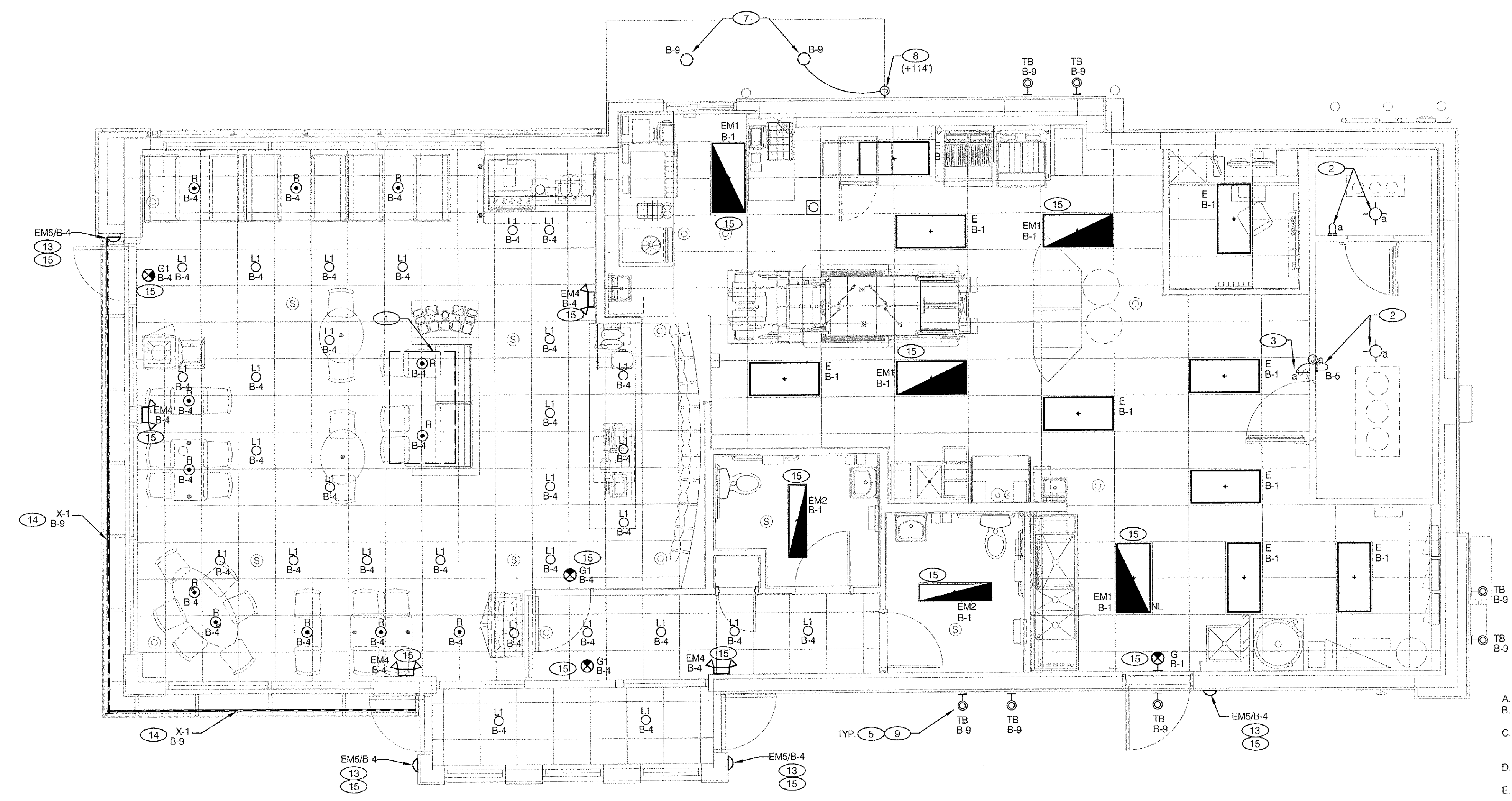


MARK D. MCCLUGGAGE AIA, CCS  
 1255 E. ...  
 Tel: (318) 265-5646  
 Fax: (318) 265-5646  
 www.dmv.com  
 MAINE Lic # PRC-2023

**DEVITA**  
 ATLANTA • GREENVILLE • RICHMOND  
 877.4.DEVITA • corp@devita.com  
 Devita & Associates, Inc. Project: 16002-30  
 Drawn By: RFB Checked By: RAG



**GENERAL NOTES**

- A. CONFIRM LIGHTING FIXTURE QUANTITIES WITH SUPPLIER.
- B. EMERGENCY AND NORMAL LIGHTING MARKED WITH "NL" SUBSCRIPT SHALL OPERATE CONTINUOUSLY. PROVIDE UNSWITCHED HOT TO NORMAL AND EMERGENCY BALLAST.
- C. EMERGENCY LIGHTING NOT MARKED WITH "NL" SUBSCRIPT SHALL OPERATE UNDER CONTROL OF LIGHTING SWITCH AS INDICATED. PROVIDE UNSWITCHED CONSTANT HOT TO EMERGENCY BALLAST AND SWITCHED HOT TO NORMAL BALLAST.
- D. ALL CONDUITS ENTERING OR LEAVING COOLER/FREEZER SHALL BE PROVIDED WITH SEAL-OFF FITTING WITH COMPOUND PER NEC 300-(7a).
- E. ALL INTERIOR LIGHTING CIRCUITS TO BE WIRED THRU THE LIGHTING CONTROL RELAYS. SEE 2/E6.0.
- F. ALL INTERIOR LIGHTING SHOWN DOWNSTREAM OF PHOTOCELLS SHALL BE WIRED AS SHOWN. SEE 2/E6.0 FOR CLARIFICATION.
- G. CONTRACTOR TO FIELD VERIFY CEILING TYPE AND PROVIDE PROPER MOUNTING HARDWARE.
- H. ALL FIXTURES SUPPLIED WITH LAMPS.

**LIGHTING PLAN** 1/4"=1'-0" **A**

NOTE:  
 CONTRACTOR SHALL VERIFY ALL QUANTITIES OF LIGHT FIXTURES. NOT ALL FIXTURE TYPES MAY BE USED.

NO.	LOCATION	MFR / CATALOG NUMBER	DESCRIPTION	LAMP		MOUNTING		VOLT	WATT	REMARKS
				#	TYPE	TYPE	HT.			
E	KITCHEN & OFFICE	ACCUSERV #E52800443 #2TL4-46L-FW-SWL-D50-LP850-NX-NAEYB	2x4 T-GRID LED TROFFER	-	LED	RECESSED GRID		120	50	
EM1	KITCHEN & OFFICE	ACCUSERV #E52800444 #2TL4-46L-FW-SWL-D50-LP850-NX-EL14L-NAEYB	2x4 T-GRID LED TROFFER	-	LED	RECESSED GRID		120	50	SAME AS E WITH BATTERY BACK-UP
E2	RESTROOM	ACCUSERV #E52800437 #TL4-43L-FW-SWL-D46-LP830-NX-NAEYB	1x4 LED TROFFER	-	LED	RECESSED FLANGE		120	46	W/DRYWALL GRID ADAPTER DGN14, E52800353
EM2	RESTROOM	ACCUSERV #E52800438 #TL4-46L-FW-SWL-D46-LP830-NX-EL14L-NAEYB	1x4 LED TROFFER	-	LED	RECESSED FLANGE		120	46	SAME AS E2 WITH BATTERY BACK-UP
EM4	DINING	ACCUSERV #E52800145 #CAX8	EMERGENCY LIGHT FROG EYE	2		WALL	TOP @ 9'-4" U.N.O.	120	18	UNSWITCHED HOT
EM5	EXTERIOR	ACCUSERV #E52801118 #EZXTEU2RWEM	EXTERIOR EMERGENCY EGRESS FIXTURE	2		EXTERIOR WALL	SEE KEY NOTES	120	18	UNSWITCHED HOT
G	KITCHEN	ACCUSERV #E52801118 #EZXTEU2RWEM	EXIT SIGN, LED UNIVERSAL MOUNT LED	-		WALL		120	4	
G1	DINING	ACCUSERV #E52801118 #EZXTEU2RWEM	EXIT SIGN, LED UNIVERSAL MOUNT LED	-		CEILING		120	4	PENDANT MOUNT FIXTURE +9" A.F.F. TO BOTTOM
L1	DINING	ACCUSERV #E52800412 #0395-018-RCB-CT8FB	DOWNLIGHT LED RECESSED	1	LED	RECESSED DROP CLG.	BOT @ 9'-4" A.F.F.	120	10.5	
R	DINING	ACCUSERV #E52801278 BES00298-052	OPAL GLASS PENDANT	1	11W LED A19 LAMP	PENDANT	6'-0" A.F.F.	120	11	LAMP (60W) EQ WARM WHITE (2700K) LED
TB	EXTERIOR WALL	ACCUSERV #E52809180 05247-051 / 052	WALL SCONCE CUSTOM DARK BRONZE FINISH	2	18W PAR38 LED 18W	WALL	CENTER OF BRACKET AT 9'-2" A.F.F. CENTER OF BRACKET AT 14'-0" A.F.F.	120	36	ALIGN BOT. OF FIXTURE BRACKET w/CHANGE IN EIFS THICKNESS
TC	EXTERIOR WALL	HI LITE H-ATB-23-L	GOOSENECK LIGHT	1	LED	WALL		120	31	(LED OPTION)
X1	EXTERIOR	AGILIGHT #LA-APEX-65K-G2	LED STRIP LIGHT	1	LED			120	3.28/FT	BY SIGN VENDOR
X2	EXTERIOR CANOPY	TOKISTAR LIGHTING #EXBK-18-WW-C	OUTDOOR LED STRING	1	LED			120	2/FT	
X3	EXTERIOR SCRN WALL	FCI LIGHTING #TBD	OUTDOOR LED STRIP	1	LED			120	2/FT	
X4	EXTERIOR TOWER	SSL_eCOVELINE XL WET #ECLVLT-6	OUTDOOR LED STRIP (UPLIGHT)	1	LED			120	2/FT	

**LIGHTING FIXTURE SCHEDULE** **C**

- 1 PRE-FABRICATED & PRE-FINISHED SOFFIT. REFER TO A7.1 FOR MORE DETAILS. (OPTIONAL).
- 2 FOR LIGHTING FIXTURES, CONDUIT, CONDUCTORS AND INSTALLATION RESPONSIBILITIES, REFER TO SCOPE OF WORK.
- 3 FIXTURE AND SWITCH FACTORY INSTALLED WITH UNIT. G.C. TO COMPLETE CIRCUITING.
- 4 EXHAUST HOOD LIGHT FIXTURES SUPPLIED WITH HOOD AND MTD IN PRE-WIRED J-BOX. COMPLETE CIRCUITING PER DETAIL 2/E6.0.
- 5 COORD. J-BOX LOCATION WITH WOOD FRAMING SO IT REMAINS CONCEALED BEHIND FIXTURE. VERIFY MOUNTING HEIGHT WITH ARCH. DWGS.
- 6 NOTE NOT USED.
- 7 CANOPY DOWN LIGHTS FURNISHED WITH CANOPY. G.C. TO MAKE FINAL CONNECTION.
- 8 J-BOX FOR CANOPY LIGHTS. VERIFY POINT OF CONNECTION. ROUTE HOMERUN VIA EXTERIOR LIGHTING CONTACTOR.
- 9 REFER TO ARCHITECTURAL EXTERIOR ELEVATIONS ON A4.0 AMD A4.1 FOR DIMENSIONED LOCATION OF FIXTURE.
- 10 SEAL ALL ELECTRICAL CONDUITS INTO THE WALK-IN COOLER.
- 11 ALERT LIGHT : ONLY APPLIES WHEN A GEN IV POWER SOAK IS USED. DISREGARD IF GEN III POWER SOAK IS USED. SEE SHEET E3.0 FOR POWER REQUIREMENTS.
- 12 NOTE NOT USED.
- 13 MOUNT "EM5" AT 8'-0" A.F.G. TO CENTER OF FIXTURE.
- 14 COORDINATE POWER CONNECTION REQUIREMENTS FOR "X" TYPE FIXTURES WITH SIGN VENDOR AND CONSTRUCTION MANAGER PRIOR TO ROUGH-IN.
- 15 CONNECT EMERGENCY BALLAST OR BATTERY BACKUP OF EMERGENCY LIGHT OR EXIT SIGN TO UNSWITCHED CONTINUOUSLY HOT CONDUCTOR OF LOCAL LIGHTING CIRCUIT INDICATED. NORMAL LIGHTING FIXTURES NOT MARKED AS "NL" FOR NIGHT LIGHT SHALL BE WIRED FOR SWITCHED NORMAL OPERATION.
- 16 NOTE NOT USED.
- 17 MOUNT SHOW WINDOW RECEPTACLE WITHIN 18" OF TOP OF WINDOW.

**KEY NOTES** **B**

CONTRACT DATE: 07.06.2016  
 BUILDING TYPE: CONVERSION  
 PLAN VERSION: FEBRUARY 2015  
 SITE NUMBER: XXX-XXX  
 STORE NUMBER: XXXXX

**TACO BELL**  
 1363 WASHINGTON AVE.  
 PORTLAND, ME



**LIGHTING PLAN AND SCHEDULE**  
**E4.0**

PLOT DATE:

S:\PROJECTS\2016\Commercial\16002-Taco Bell (GLM)\30-Portland, ME\4Drawings\TB - Portland, ME - E4\_Dwg. 7/9/2016 12:36:36 PM, bbethke