

NATIONAL ACCOUNTS: SWITCHGEAR  
SUPPLY and INSTALL STANDARD PACKAGE

CORPORATE AND FRANCHISE DEVELOPMENT

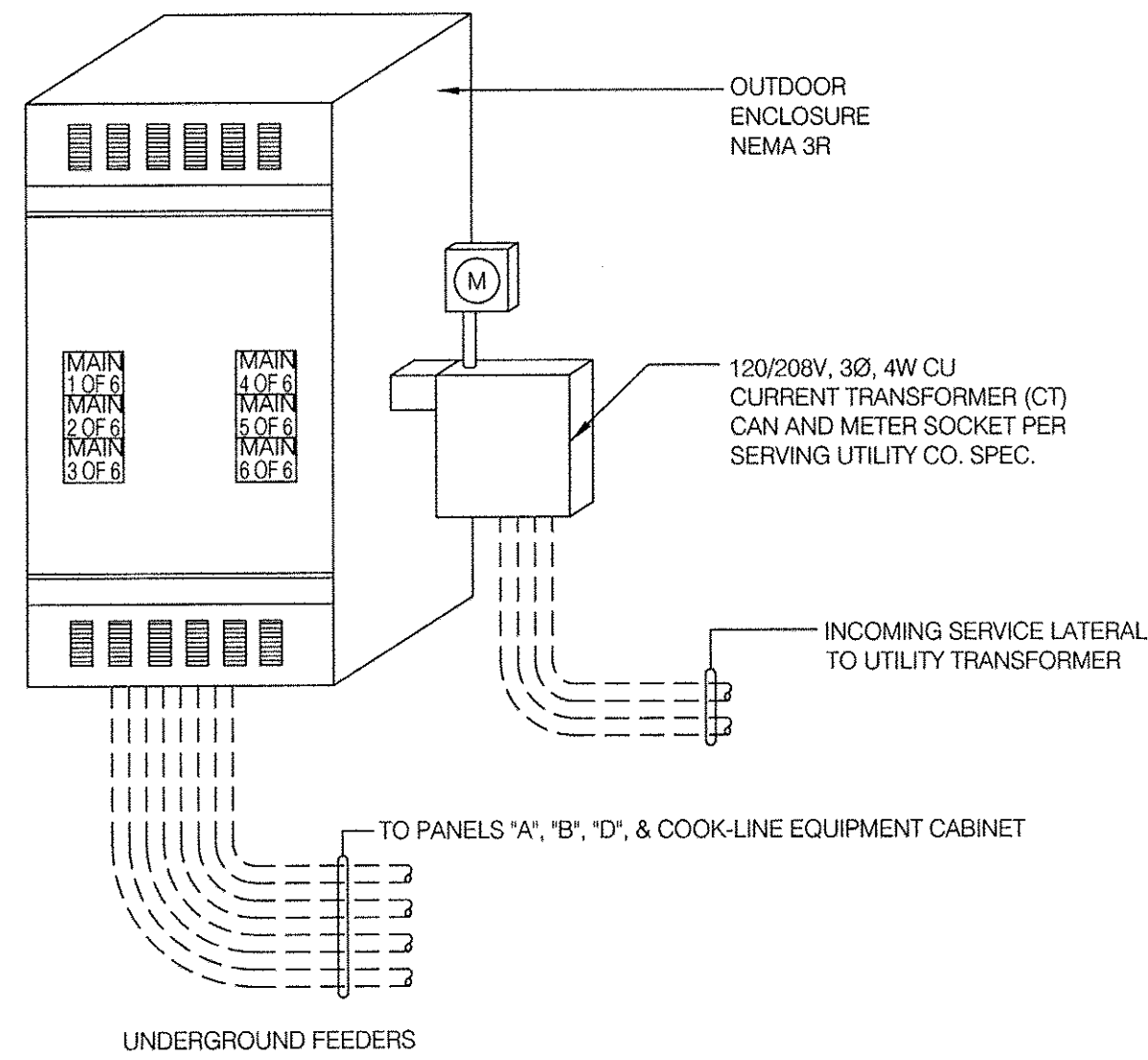
YUM NATIONAL ACCOUNT AGREEMENT IS WITH SQUARE-D FOR ELECTRICAL SWITCHGEAR EQUIPMENT FOR COMPANY AND FRANCHISE DEVELOPMENT. CUTLER-HAMMER ELECTRICAL SWITCHGEAR EQUIPMENT IS AN APPROVED ALTERNATE MANUFACTURER FOR FRANCHISE DEVELOPMENT ONLY.

UNDER THIS AGREEMENT, THE CONTRACTOR IS RESPONSIBLE FOR PURCHASE AND INSTALLATION OF THE SYSTEMS DESCRIBED IN THE PLANS. ALL COMPANY AND FRANCHISE PROJECTS SHALL CONTACT ACCUSERVE FOR A PRICE QUOTE AND A BILL OF MATERIAL CONFIRMATION FOR THEIR SPECIFIC PROJECT. SEE THE SWITCHGEAR SECTION IN THE SCOPE OF WORK FOR ADDITIONAL INFORMATION.

PRIMARY CONTACT: BUDDY BOCKWEG  
PHONE: (877) 707-7378  
FAX: (502) 961-0357  
EMAIL: buddy@accuserv.com

THE SWITCHGEAR PACKAGE CONSISTS OF SERVICE ENTRANCE, SWITCHGEAR, MAIN PANELS, SUB PANELS, LIGHTING CONTACTORS AND ALL ASSOCIATED PRODUCTS TO COMPLIMENT THE SWITCHGEAR PACKAGE.

BE PREPARED AT TIME OF ORDER OR QUOTE REQUEST TO PROVIDE ALL PROJECT DETAILS REGARDING SPECIFICATIONS AND QUANTITIES AS SITE SPECIFIC DESIGN MAY NOT MATCH PROTOTYPICAL DESIGN.

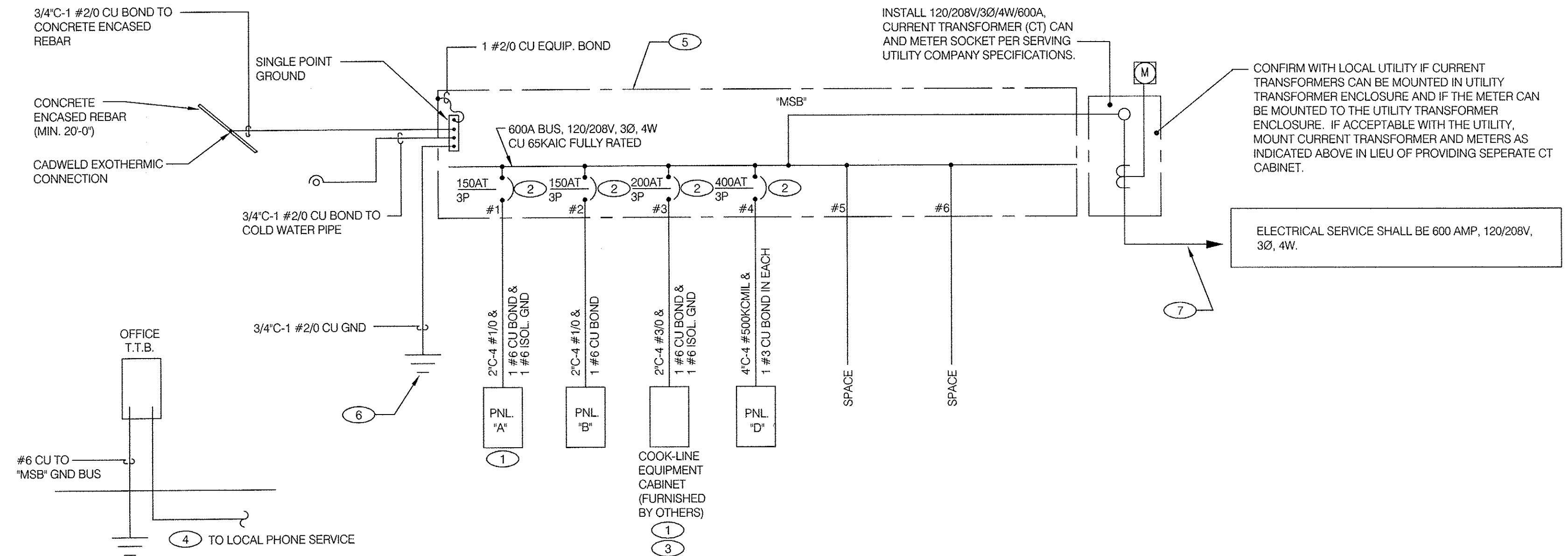


NOTE: CONFIRM DIMENSIONS WITH SUPPLIER

SERVICE ENTRANCE EQUIPMENT ELEVATION - NON-EUSERC PACKAGE E

	2x4 LED FIXTURE	NL	NIGHT LIGHT		FUSIBLE DISCONNECT SWITCH WITH STARTER
	2x4 LED FIXTURE WITH BATTERY BACK-UP	⊙	CEILING MOUNTED SPEAKER		FUSED DISCONNECT SWITCH
	1x4 LED FIXTURE	⊙	WALL MOUNTED SPEAKER		NON-FUSED DISCONNECT SWITCH
	1x4 LED FIXTURE WITH BATTERY BACK-UP	⊙	JUNCTION BOX		PHOTOCELL
	2x2 LED FIXTURE	⊙	WALL MOUNTED JUNCTION BOX		RAIN SENSOR
	2x2 LED FIXTURE WITH BATTERY BACK-UP	⊙	TELEPHONE OUTLET		FLUORESCENT WALL MOUNT FIXTURE
	DOWNLIGHT FIXTURE	⊙	SIMPLEX GROUNDED OUTLET		EMERGENCY LIGHT
	SUSPENDED DOWNLIGHT FIXTURE	⊙	DUPLEX GROUNDED OUTLET		SINGLE POLE, SINGLE THROW TOGGLE SWITCH
	PENDANT MOUNTED LIGHT FIXTURE	⊙	QUADRUPLEX GROUNDED OUTLET		SINGLE POLE, SINGLE THROW TOGGLE SWITCH W/ PILOT LIGHT
	TRACK MOUNTED PENDANT LIGHT FIXTURE	⊙	GROUND FAULT DUPLEX OUTLET		RELAY
	DIRECTIONAL FIXTURE	⊙	GROUND FAULT SIMPLEX OUTLET		CONDUIT RUN, UNDERGROUND
	TRACK MOUNTED DIRECTIONAL FIXTURE	⊙	CEILING DUPLEX OUTLET		SMOKE DETECTOR
	TRACK MOUNTED DIRECTIONAL FIXTURE, TRACK MOUNTED	⊙	DUPLEX ISOLATED GROUND OUTLET		EXTERIOR WALL FIXTURE
	TRACK MOUNTED DIRECTIONAL FIXTURE, TRACK MOUNTED TO UNDERSIDE OF INTERIOR CANOPY	⊙	QUADRUPLEX ISOLATED GROUND OUTLET		EXTERIOR DECORATIVE WALL FIXTURE
	COOLER FIXTURE	⊙	SIMPLEX ISOLATED GROUND		WEATHERPROOF GROUND FAULT
	EXIT SIGN (WALL MOUNTED)		SPECIAL PURPOSE OUTLET		
	EXIT SIGN (CEILING MOUNTED)		CEILING SPECIAL PURPOSE OUTLET		
	SECURITY STROBE		ELECTRICAL PANEL. SEE SHEET E2.1 FOR PANEL SCHED.		
			HOLD UP EMERGENCY BUTTON		
			ELECTRICAL MOTOR		
			DUCT MOUNTED SMOKE DETECTOR		
			CONNECTION TO EQUIPMENT		

ELECTRICAL LEGEND F



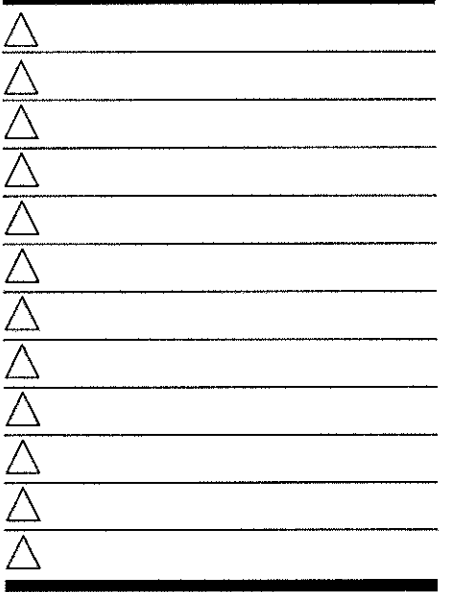
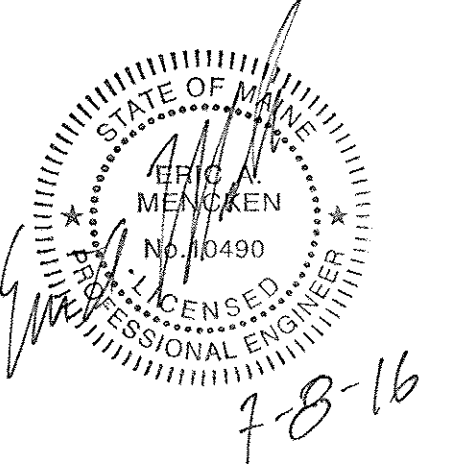
SINGLE LINE DIAGRAM B

- A. THERE SHALL BE U.L. LISTED SERIES RATING BETWEEN CKT. BREAKERS LOCATED AT THE DISTRIBUTION PANEL AND THE DOWNSTREAM 10k A.I.C. RATED CIRCUIT BREAKERS AT PANELS 'A', 'B' COOK-LINE EQUIPMENT CABINET BASED ON THE MAXIMUM FAULT CURRENT AS DETERMINED AT THE SERVICE ENTRANCE AND DOWNSTREAM 22K A.I.C. RATED CIRCUIT BREAKERS AT PANEL "D."
- B. THE NFPA-70 '65 SWITCH' MAXIMUM RULE SHALL APPLY TO THE POINT AT WHICH THE SERVICE ENTERS THE BUILDING AS DEFINED BY NFPA-70 (CURRENT EDITION IN FORCE AT THIS SITE). NOTIFY ENGINEER WHERE LOCAL CONDITIONS REQUIRE ALTERNATE LOCATIONS OR SINGLE POINT DISCONNECT.
- C. REFER TO SCOPE OF WORK FOR DETAILS REGARDING OWNER SUPPLIED AND/OR INSTALLED PRODUCTS. GENERAL CONTRACTOR IS RESPONSIBLE FOR ALL OTHER WORK AND MATERIAL FOR THE PROJECT.
- D. IF UTILITY COMPANY PROPOSES A SERVICE DIFFERENT FROM THAT ILLUSTRATED, CONTACT THE ENGINEER OF RECORD FOR A DECISION BEFORE PROCEEDING. COORDINATE AVAILABLE SHORT CIRCUIT CURRENT W/ LOCAL UTILITY AND PROVIDE CIRCUIT BREAKERS W/ SUFFICIENT INTERRUPTING CAPACITY.
- E. COORDINATE CT METERING COMPARTMENT SIZE WITH LOCAL UTILITY COMPANY. ELECTRICAL INSPECTOR AND THE NATIONAL ELECTRICAL CODE TO MEET ALL REQUIREMENTS BEFORE PURCHASE AND INSTALLATION. NEW METER SHALL BE BY LOCAL UTILITY COMPANY.
- F. ALL WIRING SHOWN SHALL BE COPPER TYPE "THIN/THIN" EXCEPT FEEDERS FROM UTILITY TRANSFORMER TO SWITCH BOARD MAY BE ALUMINUM.
- G. MC CABLE ACCEPTABLE FOR ALL APPLICATIONS WHERE ALLOWED BY LOCAL CODES. ALL CONDUIT MUST BE CONCEALED U.N.O..
- H. UNLESS NOTED OTHERWISE, BRANCH CIRCUIT WIRING SHALL CONSIST OF 2#12, 1#12G, 3/4".

GENERAL NOTES D

1. CONNECT ISOLATED GROUND TO ISOLATED GROUND BUS IN PANEL AND LAND ISOLATED GROUND TO SINGLE POINT GROUND. DO NOT COMBINE COMMON GND TO ISOLATED GROUND.
2. 6 BUILDING MAIN DISCONNECT FOR THIS SERVICE: (MAXIMUM 6 MAINS PER N.E.C.) LABEL EACH MAIN BREAKER AS INDICATED: "MAIN 1 OF 6" (ENGRAVED LETTERS x 3/4" HIGH) "MAIN 2 OF 6" "MAIN 3 OF 6" "MAIN 4 OF 6" "MAIN 5 OF 6" "MAIN 6 OF 6"
3. EQUIPMENT CABINET IS FURNISHED WITH COOK LINE.
4. PROVIDE 2" CONDUIT STUBBED INTO BUILDING FROM UTILITY DEMARC FOR TELEPHONE.
5. VERIFY AVAILABLE FAULT CURRENT AT SERVICE ENTRANCE WITH THE UTILITY CO. AND CONFIRM 65 KAIC RATING IS SUFFICIENT.
6. (3) 5/8" DIA. x 10'-0" COPPER CLAD GROUND RODS. INSTALL 12'-0" APART AND CONNECT GROUND SYSTEM PER N.E.C ARTICLE 250.
7. INSTALL UNDERGROUND SERVICE LATERAL TO UTILITY TRANSFORMER PER SERVING UTILITY COMPANY SPECIFICATIONS. 4#350kcmil IN EACH OF (2) 4" C. TO PAD MOUNT TRANSFORMER. GC/ELECT. CONTRACTOR SHALL COORDINATE SERVICE POLES PER LOCAL UTILITY CODE. IF ALUMINUM CONDUCTORS ARE USED PROVIDE 4#500kcmil IN EACH (2) 4" C.

KEY NOTES C



CONTRACT DATE: 07.06.2016  
BUILDING TYPE: CONVERSION  
PLAN VERSION: FEBRUARY 2015  
SITE NUMBER: XXX-XXX  
STORE NUMBER: XXXXX

TACO BELL  
1363 WASHINGTON AVE.  
PORTLAND, ME



RISER DIAGRAM AND LEGEND NON-EUSERC  
**E2.0**

PLOT DATE:

MARK D. MCCLUGGAGE AIA, CCS  
1525 E Douglas  
Portland, ME 04102  
Phone: (516) 282-5546  
www.glmv.com  
MAINE LIC. # AIC-0233

**DEVITA**  
ATLANTA • GREENVILLE • RICHMOND  
877-4-DEVITA • corp@devita.com  
Devita & Associates, Inc. Project: 1.1602-30  
Drawn By: RPB Checked By: RAG  
MAINE LIC. # AIC-0233