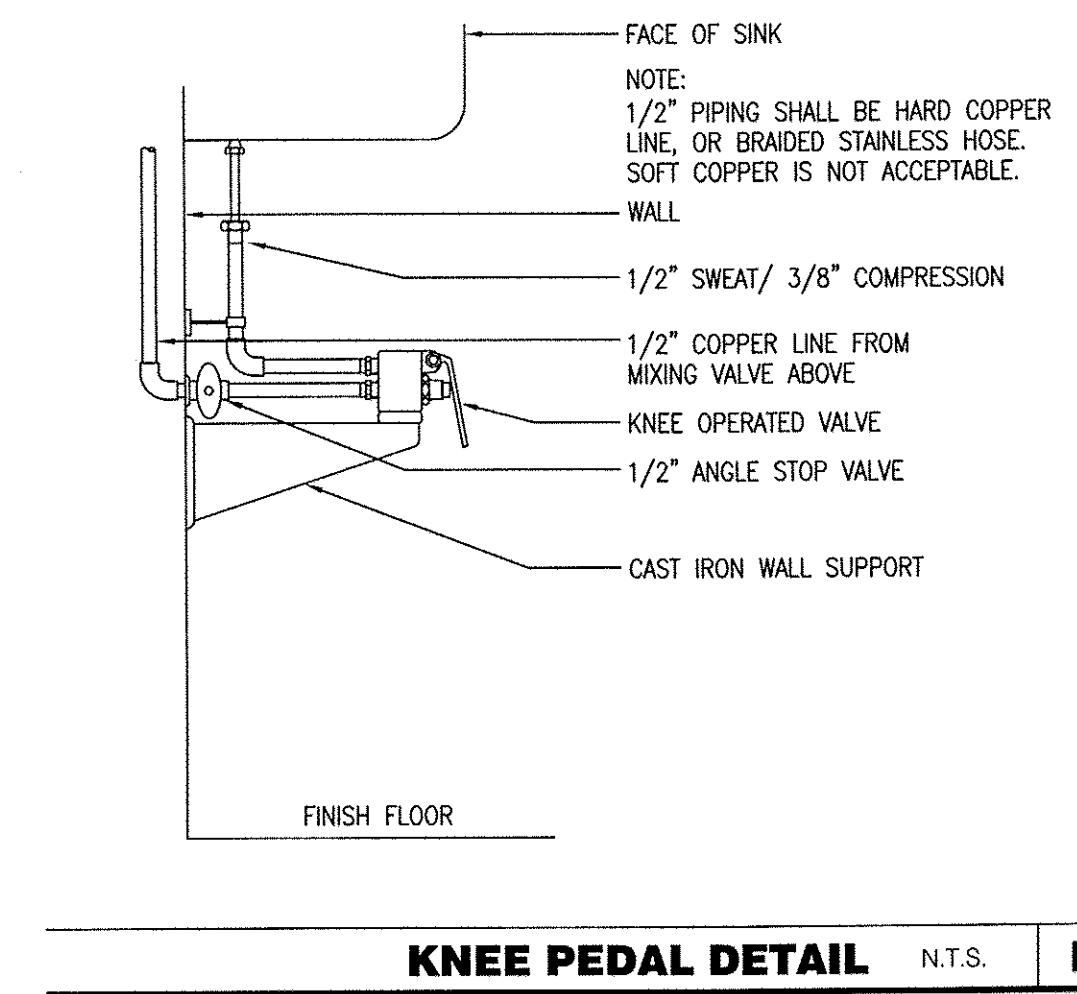
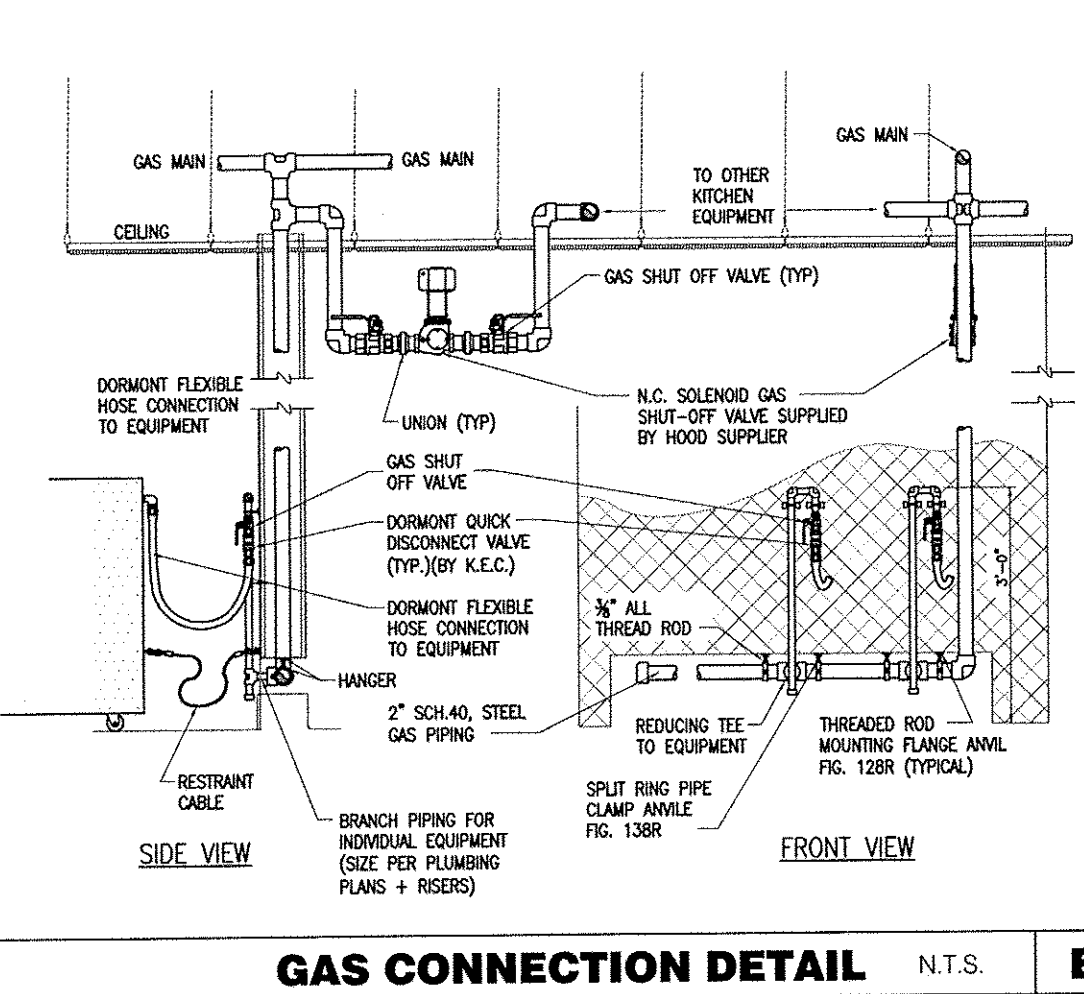
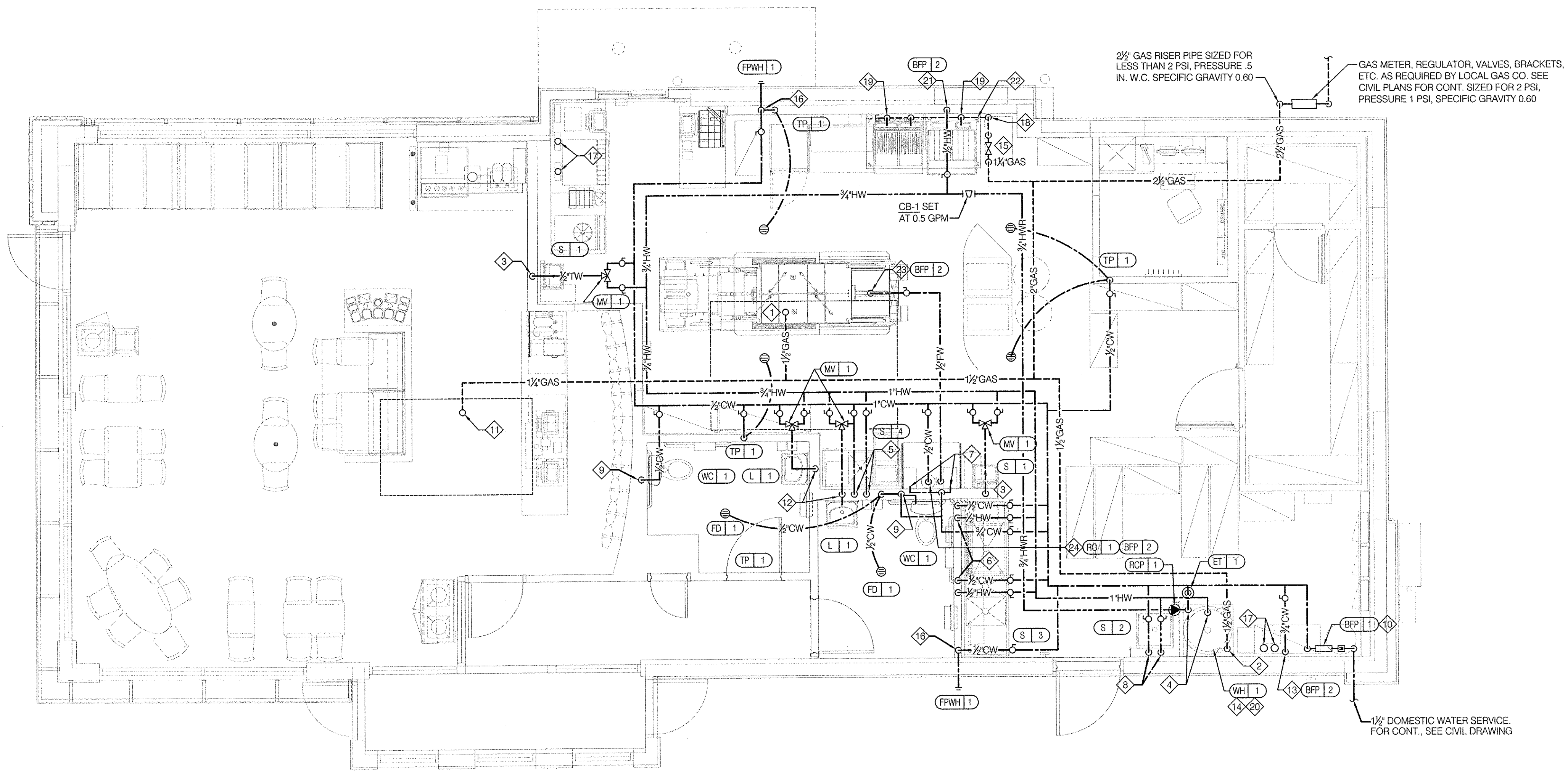


MARK	FIXTURE/EQUIPMENT	QUANTITY	WATER			TOTAL F.U. PER FIXTURE
			CW F.U. PER FIXTURE	HW F.U. PER FIXTURE	TOTAL WSFU PER TYPE	
HWC-1	ADA WATER CLOSET	2	5.0	—	5.0	10.0
L-1	LAVATORY	2	1.5	1.5	2.0	4.0
S-1	HAND SINK	2	1.5	1.5	2.0	4.0
S-2	MOP SINK	1	3.0	3.0	4.0	4.0
S-3	3 COMP. SINK	1	3.0	3.0	4.0	4.0
S-4	PREP SINK	1	1.5	1.5	2.0	2.0
FPWH-1	F.P. WALL HYDRANT	1	3.0	—	3.0	3.0
RETH-1	REETHERMALIZER	1	—	1.0	1.0	1.0
P-450	HOT WATER FILTER	2	1.0	—	1.0	2.0
P-315	REVERSE OSMOSIS	1	1.0	—	1.0	1.0
S-286	WATER FILTER	1	5.0	—	5.0	5.0
TOTALS						40.0
MAXIMUM WATER DEMAND AT 40.0 F.U. = 26.3 GPM = 1½" WATER MAIN SUPPLY						

MARK	FIXTURE/EQUIPMENT	QUANTITY	UNIT DEMAND BTUH	TOTAL DEMAND BTUH	TOTAL CFH	CONNECTION PIPE SIZE
RTU-1	ROOFTOP UNIT 1	1	120,000	120,000	120.0	¾"
RTU-2	ROOFTOP UNIT 2	1	250,000	250,000	250.0	¾"
C-015	FRYER	1	110,000	220,000	220.0	¾"
C-105	REETHERMALIZER	1	110,000	110,000	110.0	¾"
WH-1	WATER HEATER	1	199,900	199,900	199.9	¾"
TOTAL				899,900	899.9	
2½" GAS LINE REQUIRED BASED ON 150'-0" TOTAL LENGTH OF PIPE AT LESS THAN 2 PSI						



WATER & GAS PLAN NOTES

- A. WATER DISTRIBUTION PIPING IS SHOWN ABOVE FINISH CEILING. UNDER SLAB DISTRIBUTION ALLOWED AT CONTRACTOR OPTION. COORDINATE ALL DETAILS.
- B. NO ROOF PENETRATIONS PERMITTED WITHIN THE ROOF 'WATER VALLEYS'. REFER TO ROOF PLAN FOR LOCATIONS.
- C. REFER TO SHT P4.0 FOR ROUGH-IN LOCATIONS.
- D. REFER TO SHEET P5.0 FOR WATER AND GAS ISOMETRIC DRAWINGS.
- E. FLUSH ALL WATER SUPPLY LINES OF ALL DEBRIS AND IMPURITIES PRIOR TO CONNECTING TO WATER FILTERS.
- F. PROVIDE REDUCED PRESSURE BACKFLOW TO SERVE CARBONATOR , DRAIN RELIEF TO FLOOR SINK WITH AIR GAP.
- G. PROVIDE A VENTED DOUBLE CHECK VALVE W/ATMOSPHERIC PORT FOR THE WATER LINES SUPPLY LINES TO FOOD SERVICE EQUIPMENT (ASSE -1022.)
- H. EQUIPMENT VENDOR TO FOLLOW MANUFACTURER'S REQUIREMENTS TO INSTALL DOUBLE CHECK VALVE ON EQUIPMENTS WHERE APPLICABLE.

- KEY NOTES**
- 1 1-1/4" GAS UP TO RTU-1 WITH DIRT LEG, GAS COCK, UNION.
 - 2 1-1/4" GAS DOWN TO WATER HEATER WITH GAS COCK, DIRT LEG AND UNION.
 - 3 1/2" TEMPERED WATER DOWN IN WALL TO HAND SINK.
 - 4 1" HOT AND 1-1/4" COLD WATER LINES UP TO WATER HEATERS LOCATED ON ROOF.
 - 5 1/2" HOT AND COLD WATER LINES DOWN IN WALL TO PREP SINK.
 - 6 1/2" COLD AND HOT WATER LINES DOWN IN WALL TO THREE COMPARTMENT SINK.
 - 7 1/2" COLD WATER 2'-0" A.F.F. . CONNECT TO WATER FILTER FOR HOT WATER SYSTEM P-450. PROVIDE SHUT-OFF VALVE PRIOR TO CONNECTION TO TO WATER FILTER.
 - 8 1/2" COLD AND HOT WATER DOWN IN THE WALL TO THE MOP SINK.
 - 9 1/2" CW DOWN IN WALL TO FLUSH TANK WATER CLOSET .
 - 10 REDUCED PRESSURE BACKFLOW PREVENTER LOCATED PER LOCAL UTILITY REQ'S. PROVIDE SHUT-OFF VALVES AT BOTH SIDES OF BACKFLOW PREVENTER. PIPE RELIEF TO FLOOR SINK. VERIFY LOCATIONS WITH CIVIL DWGS.
 - 11 1" GAS UP TO RTU-1 WITH DIRT LEG, GAS COCK, UNION.
 - 12 1/2" TEMPERED WATER LINES DOWN IN WALL TO LAVATORY.
 - 13 3/4" CW DOWN ALONG WALL TO WATER FILTER S-286.
 - 14 WATER HEATER (WH-1) PIPE CONDENSATE LINE. T&P DISCHARGE AND DRAIN PAN TO HUB DRAIN. SEE WATER HEATER DETAIL 2/P6.0
 - 15 EMERGENCY GAS SHUT OFF VALVE LOCATED BELOW CEILING.
 - 16 1/2" CW DOWN IN WALL TO EXTERIOR HOSE BIBB.
 - 17 BUNDLED SYRUP LINES TO BEVERAGE DISPENSERS S-533 & S-530 AND FILTERED WATER LINES TO ICE MAKERS S-511 AND FROZEN BEVERAGE DISPENSER S-543. SEE DRAWINGS A2.0, P5.0, AND 19/A6.4
 - 18 1-1/4" GAS DOWN IN WALL TO TACO BELL COOKING EQUIPMENT. VERTICAL GAS PIPING IN WALL SHALL NOT BE RIGIDLY SECURED AND ADEQUATE PIPE PROTECTION SHALL BE PROVIDED.
 - 19 3/4" GAS DIRT LEG W/ GAS COCK TO COOKING EQUIPMENT. PROVIDE FLEXIBLE GAS HOSE KIT FOR CONNECTION TO COOKING EQUIPMENT.
 - 20 WATER HEATER VENT LOCATIONS SHOWN ON SHEET M2.0. SEE DETAIL 2/P6.0.
 - 21 1/2" HOT WATER DOWN IN WALL TO TB RETHERMALIZER. PROVIDE WITH REDUCED PRESSURE ZONE WATTS SS009-ASSE1013 AND SHUT-OFF VALVE OUTSIDE OF WALL FOR CONNECTION TO RETHERMALIZER
 - 22 RUN GAS PIPE 18" A.F.F. WITH DIRT LEGS FOR GAS HOSE KITS TO COOKING EQUIPMENT.
 - 23 1/4" FILTER WATER PIPE DOWN IN UTILITY CHASE OF DRY PRODUCTION LINE. PROVIDE SHUT-OFF VALVE ON FW PIPING IN CEILING NEAR CHASE.
 - 24 1/2" COLD WATER TO REVERSE OSMOSIS FILTER P-305 AND 1/2" FILTER WATER FROM REVERSE OSMOSIS FILTER. PROVIDE SHUT-OFF VALVE ON CW PIPE PRIOR TO CONNECTION TO FILTER.



CONTRACT DATE: 07.06.2016
BUILDING TYPE: CONVERSION
PLAN VERSION: FEBRUARY 2015
SITE NUMBER: XXX-XXX
STORE NUMBER: XXXXX

TACO BELL
1363 WASHINGTON AVE.
PORTLAND, ME

CONVERSION
LIVE MAS - MEDIUM40

WATER AND GAS PLAN
P3.0
PLOT DATE: