

**SANITARY SEWER LOAD CALC.**

MARK	FIXTURE/EQUIPMENT	QUANTITY	WASTE	
			WASTE F.U. PER FIXTURE	TOTAL F.U. PER FIXTURE
FD-1	FLOOR DRAIN	3	2.0	6.0
HD-1	HUB DRAIN	1	2.0	2.0
WC-1	ADA WATER CLOSET	2	4.0	8.0
L-1	LAVATORY	2	1.0	2.0
S-1	HAND SINK	2	2.0	4.0
TOTALS				22.0

MAXIMUM WASTE DEMAND AT 22.0 F.U. = 4" SANITARY SEWER WASTE

**GREASE WASTE LOAD CALC.**

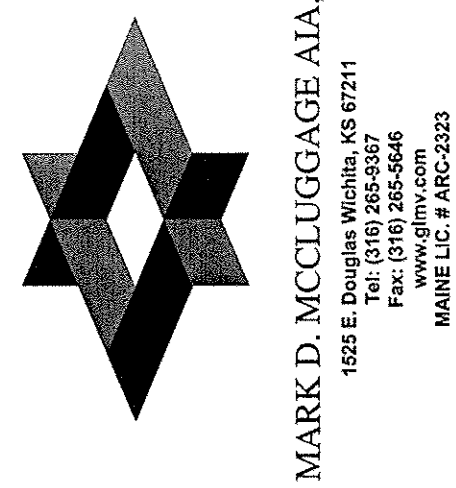
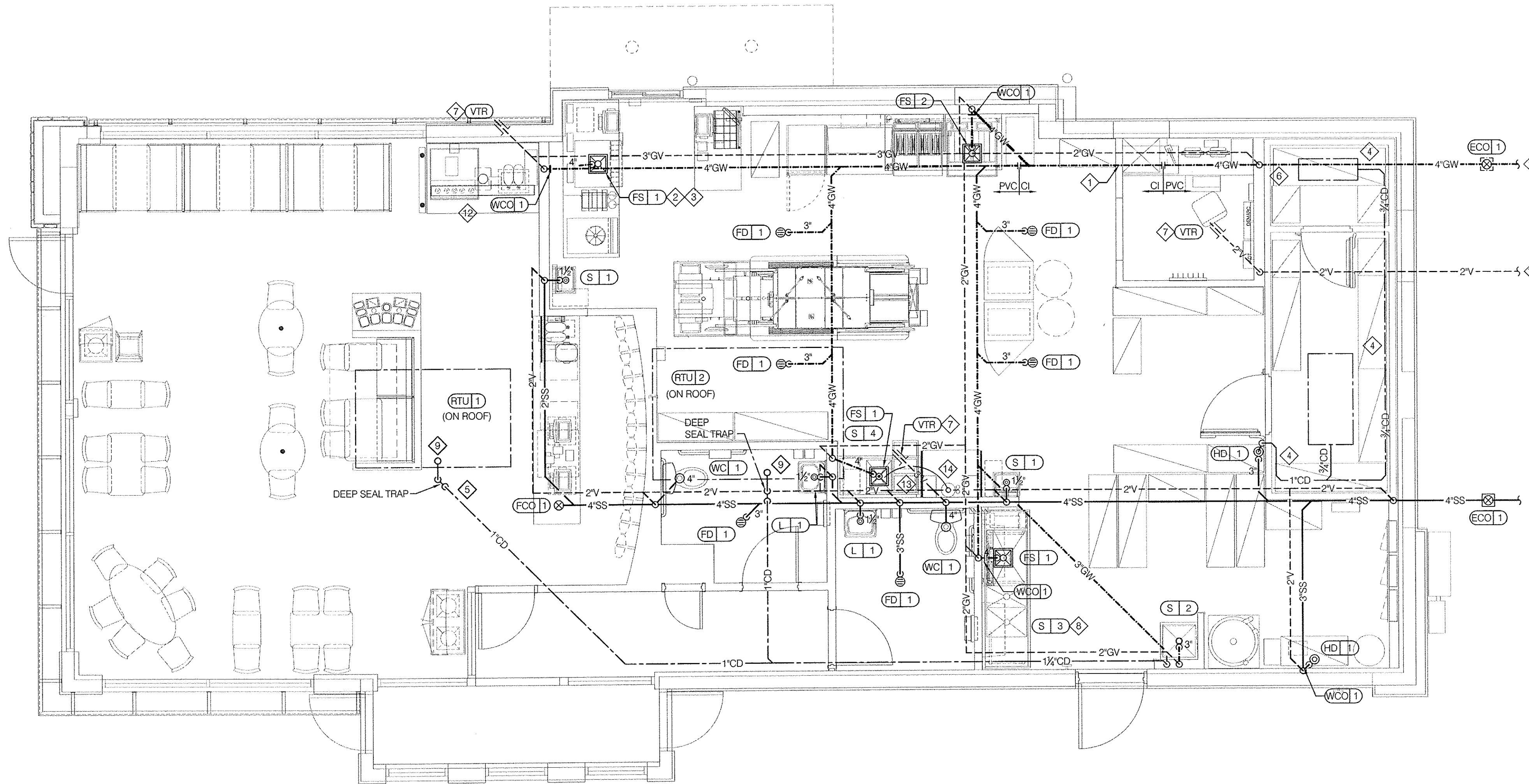
MARK	FIXTURE/EQUIPMENT	QUANTITY	WASTE	
			WASTE F.U. PER FIXTURE	TOTAL F.U. PER FIXTURE
FD-1	FLOOR DRAIN	4	4.0	16.0
FS-1	FLOOR SINK	3	6.0	18.0
FS-2	FLOOR SINK	1	6.0	6.0
S-2	MOP SINK	1	5.0	5.0
TOTALS				45.0

MAXIMUM WASTE DEMAND AT 45.0 F.U. = 4" GREASE WASTE

**GREASE INTERCEPTOR SIZING**

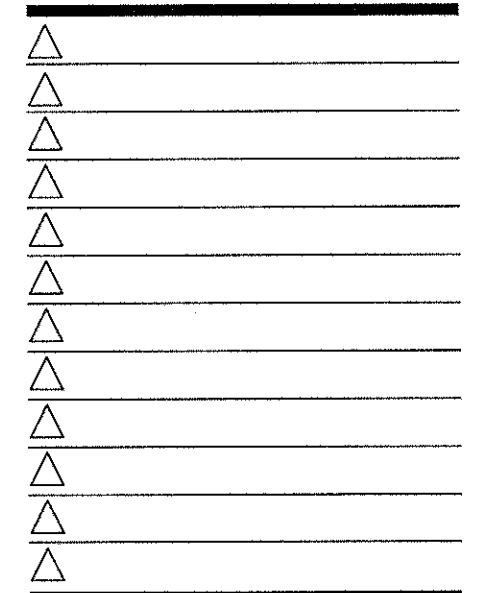
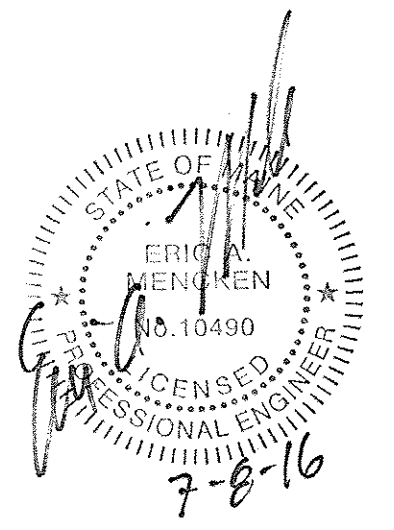
DFU'S	INTERCEPTOR VOLUME GALS.
8	500
21	750
35	1000
90	1250
172	1500
216	2000
307	2500
342	3000
428	4000
576	5000

CONTRACTOR SHALL INSTALL (1) 1250 GALLON GREASE INTERCEPTOR PER THE 2012 UNIFORM PLUMBING CODE.



MARK D. MCCLURG AIA, CCS  
 1835 E. Douglas Wichita, KS 67211  
 Tel: (316) 285-9367  
 Fax: (316) 285-5646  
 MAINE LIC # ARC-2323

**DEVITA**  
 ATLANTA • GREENVILLE • RICHMOND  
 877.4.DEVITA • corp@devita.com  
 Devita & Associates, Inc. Project: 1602-30  
 Drawn By: IMS Checked By: RFR



CONTRACT DATE: 07.06.2016  
 BUILDING TYPE: CONVERSION  
 PLAN VERSION: FEBRUARY 2015  
 SITE NUMBER: XXX-XXX  
 STORE NUMBER: XXXXX

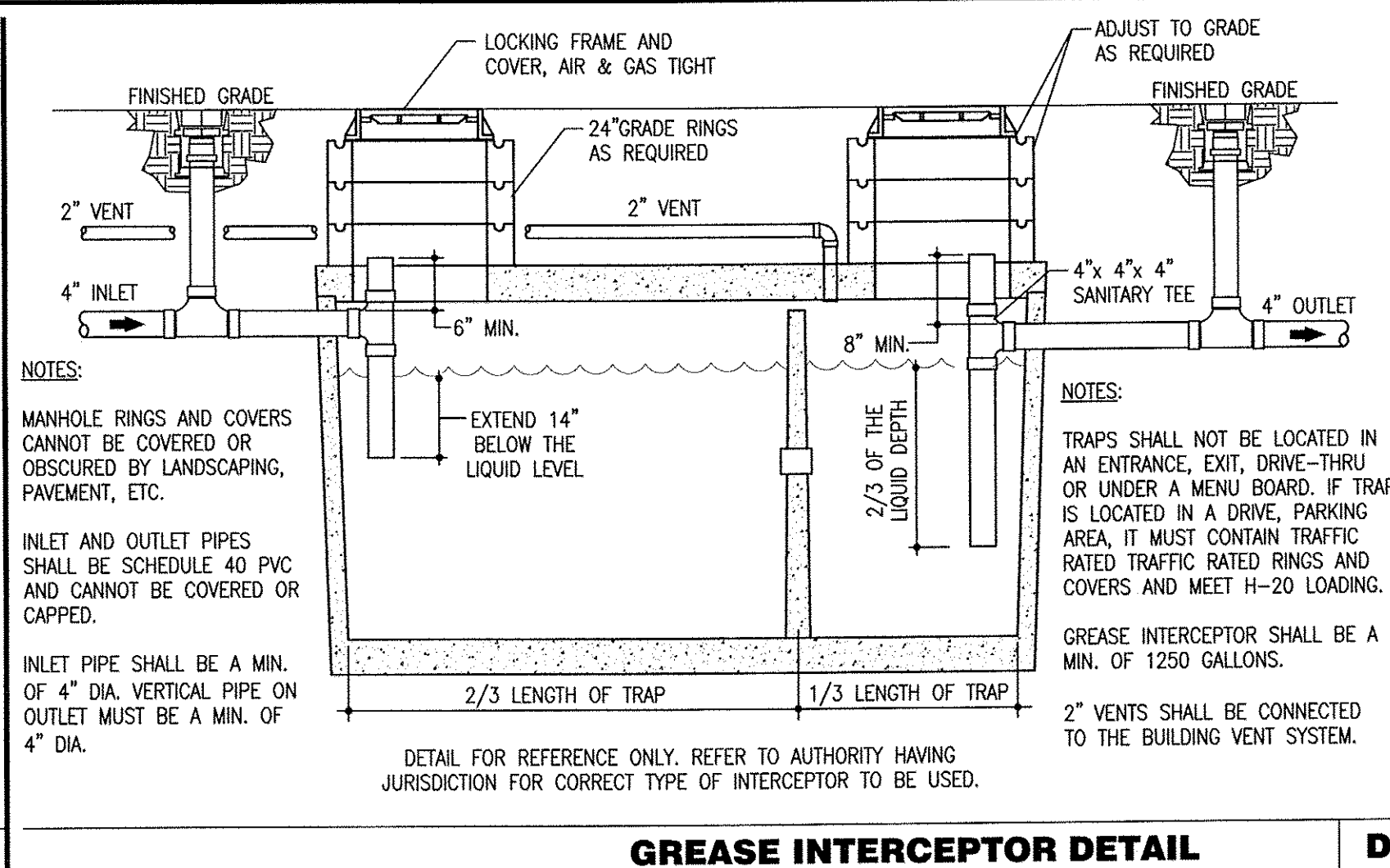
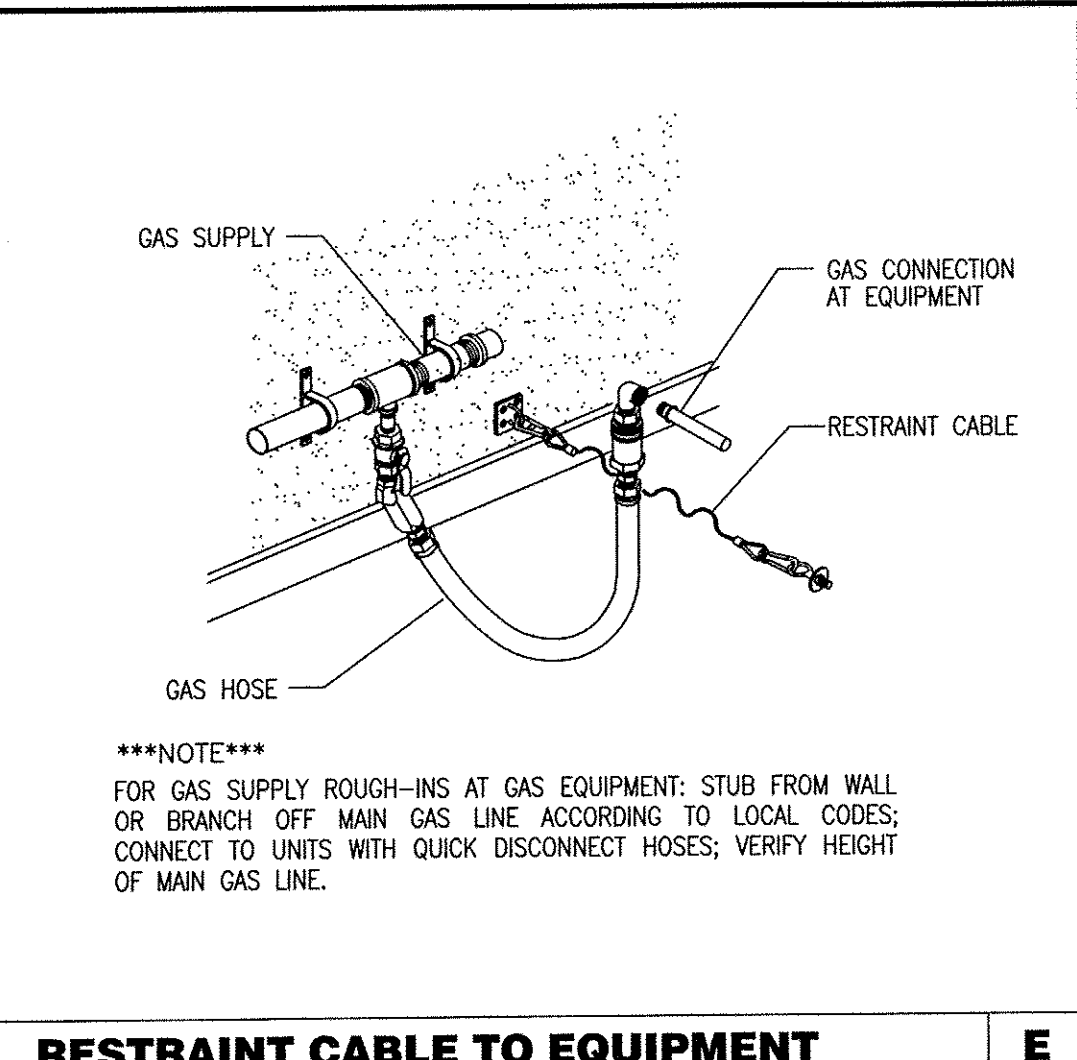
**TACO BELL**  
 1363 WASHINGTON AVE.  
 PORTLAND, ME



**WASTE AND VENT PLAN**  
**P2.0**

PLOT DATE:

**WASTE & VENT PLAN 1/4"=1'-0" A**



- WASTE & VENT PLAN NOTES C**
- NO ROOF PENETRATIONS PERMITTED WITHIN ROOF WATER PLY. REFER TO ROOF PLAN FOR LOCATIONS.
  - REFER TO RISER DIAGRAM ON SHEET P5.0 FOR ALL WASTE AND VENT SIZES.
  - STORM WATER PIPING IS SIZED FOR A RAINFALL OF 4" PER HOUR. ADJUST ROOF DRAIN (RD-1) SIZE AND STORM PIPE SIZES PER THE LOCAL RAINFALL REQUIREMENTS AND BY THE AUTHORITY HAVING JURISDICTION. PIPE SHALL DISCHARGE OVER DRIVE-THRU ROADWAY CURB OR AS DIRECTED BY THE AUTHORITY HAVING JURISDICTION.
  - INSULATE ALL HORIZONTAL RUNS OF STORM DRAINAGE PIPING ABOVE THE CEILING OR EXPOSED WITH 1" CLOSED CELLULAR INSULATION WITH VAPOR BARRIER JACKET THAT CAN BE PAINTED.
  - 4" SECONDARY DRAIN OUTLET SHALL EXTEND 2" BEYOND FINISHED WALL.
  - SEE ARCHITECTURAL DRAWING A4.0 FOR INSTALLATION PROCEDURE AND A4.1 FOR EXACT LOCATION OF DRAIN OUTLET.
  - COORDINATE LOCATION OF STORM WATER PIPING ABOVE CEILING WITH ALL TRADES PRIOR TO INSTALLATION.
  - SEE ARCHITECTURAL PLANS FOR DOWNSPOUT LOCATIONS
  - VERIFY WITH THE LOCAL BUILDING AUTHORITY THAT CONDENSATE DRAINAGE CAN BE ROUTED TO THE MOP SINK.

- UNDERGROUND GREASE WASTE PIPE SHALL BE HUB CAST IRON PIPE FOR THE FIRST 10 FEET FROM CONNECTION TO FLOOR SINK FS-2, OUTWARD.
  - PROVIDE CONDENSATE LINE AND DRAIN LINE FROM ICE MACHINE TO FLOOR SINK. PROVIDE AIR GAP PER LOCAL CODE.
  - PROVIDE WASTE LINES FROM BEVERAGE UNIT TO FLOOR SINK. PROVIDE AIR GAP PER LOCAL CODE.
  - PROVIDE 3/4" COPPER CONDENSATE FROM COOLER/FREEZER EVAPORATOR DRAIN PROVIDED BY VENDOR TO OUTFALL AT FLOOR SINK (HEAT ROPE IS SUPPLIED WITH FREEZER CONDENSATE).
  - PVC OR COPPER CONDENSATE DRAIN FROM HVAC UNITS ON ROOF, RUN ABOVE CEILING. PIPING SHALL SLOPE 1/4" PER FOOT AND SHALL BE INSULATED WITH 1" CLOSED CELLULAR INSULATION. REFER TO RISER DIAGRAM ON SHEET P5.0 FOR PIPE SIZES.
  - ENTIRE RUN OF DRAIN LINES TO INLET OF EXTERIOR GREASE INTERCEPTOR AND OUTLET OF INTERCEPTOR TO CONNECTION AT SANITARY MAIN SHALL BE SCHEDULE 40 PVC DWV OR AS REQUIRED BY THE AUTHORITY HAVING JURISDICTION.
  - 3" VENT UP THROUGH ROOF.
  - PIPE WASTE FROM 3-COMPARTMENT SINK TO FLOOR SINK WITH AIR GAP PER CODE.
  - 1" CONDENSATE DRAIN DOWN FROM RTU-1. SEE DETAIL 13 ON DRAWING P6.0.
  - 1" CONDENSATE DRAIN DOWN FROM RTU-2. SEE DETAIL 13 ON DRAWING P6.0.
  - 2" CONDENSATE DRAIN PIPE DOWN IN WALL. ROUTE CONDENSATE PIPING TO EXTERIOR DRYWELL, RETENTION AREA OR STORM SEWER AS DIRECTED BY THE AUTHORITY HAVING JURISDICTION. TO OUTFALL AT FLOOR SINK BENEATH D/T DRINK MACHINE.
  - RUN DRAIN LINE FROM S/S DRINK MACHINE THRU WALL OPENING. TO OUTFALL AT FLOOR SINK BENEATH D/T DRINK MACHINE.
  - 3/4" DRAIN FOR REVERSE OSMOSIS.
  - PIPE WASTE FROM PREP SINK TO FLOOR SINK WITH AIR GAP PER CODE.
  - ROUTE TO GREASE INTERCEPTOR SEE CIVIL DRAWINGS FOR EXACT LOCATION.
  - WH-1 AND WH-2 LOCATED ON ROOF.
- KEY NOTES B**