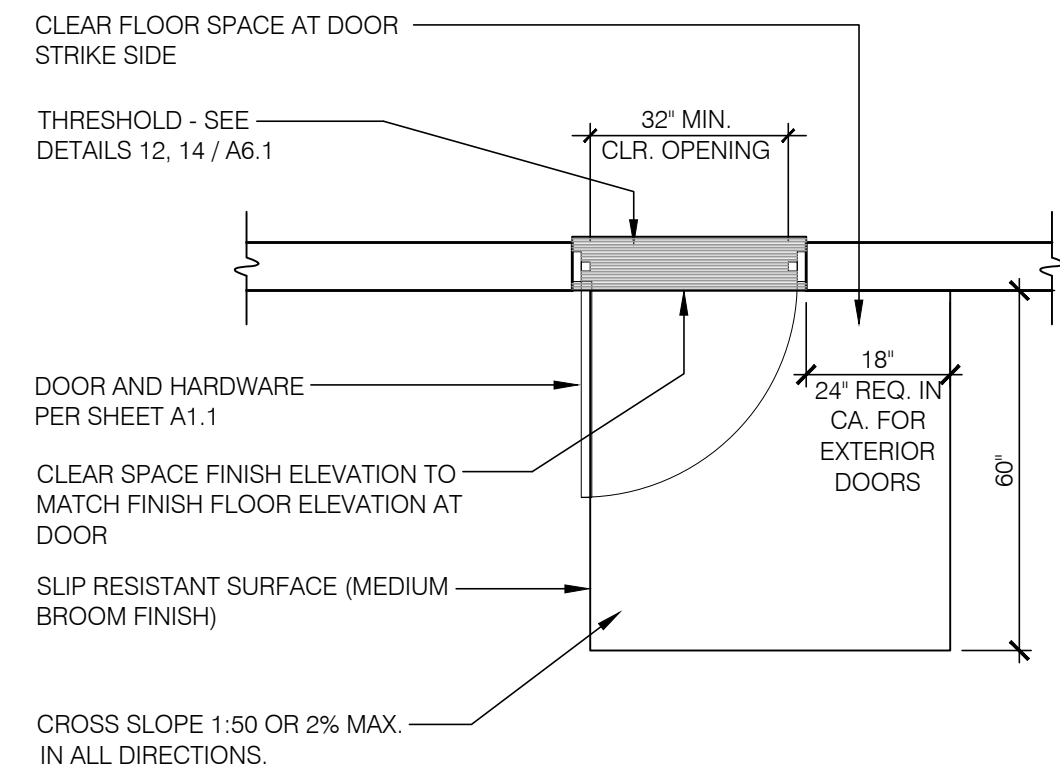


TYP. ENTRANCE / EXIT DOOR N.T.S. **17**



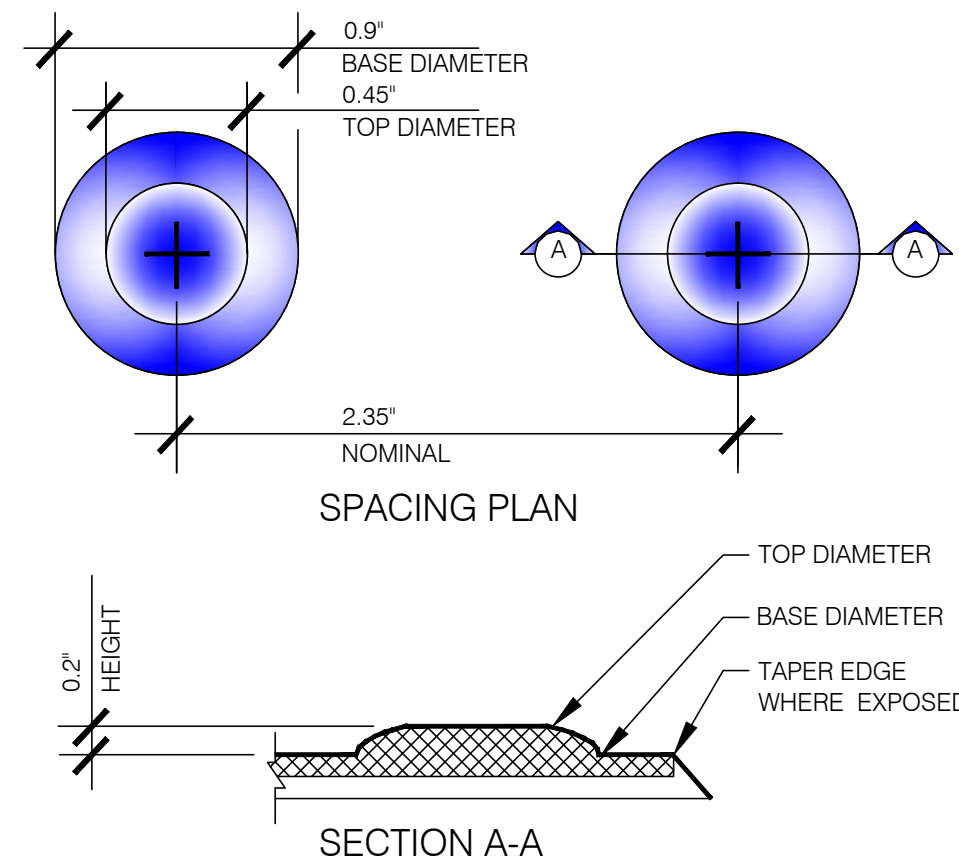
NOTE:

1. EXTERIOR DOOR PRESSURE CANNOT EXCEED 8.5 LBS (GC TO DOOR PRESSURE TO MINIMUM ALLOWABLE BY AHJ).

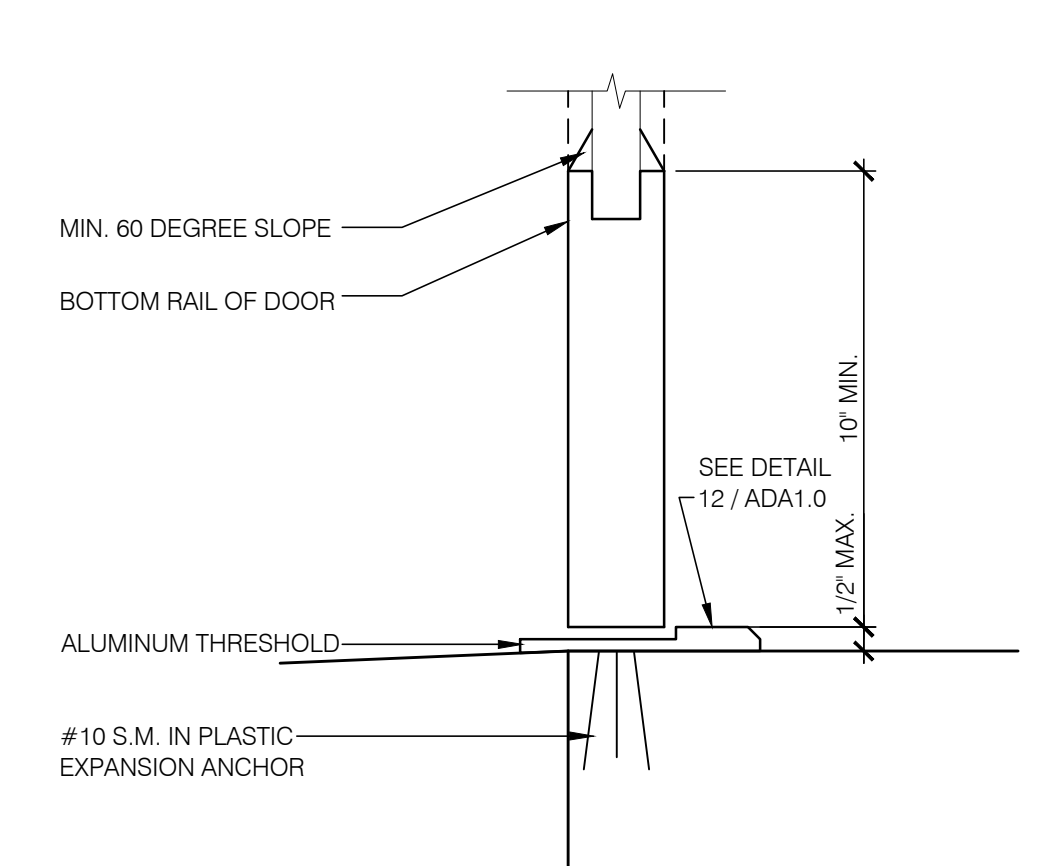
2. INTERIOR DOOR PRESSURE CANNOT EXCEED 5 LBS.

3. 60% OF PUBLIC ENTRANCES MUST BE ACCESSIBLE. (100% IN CA)

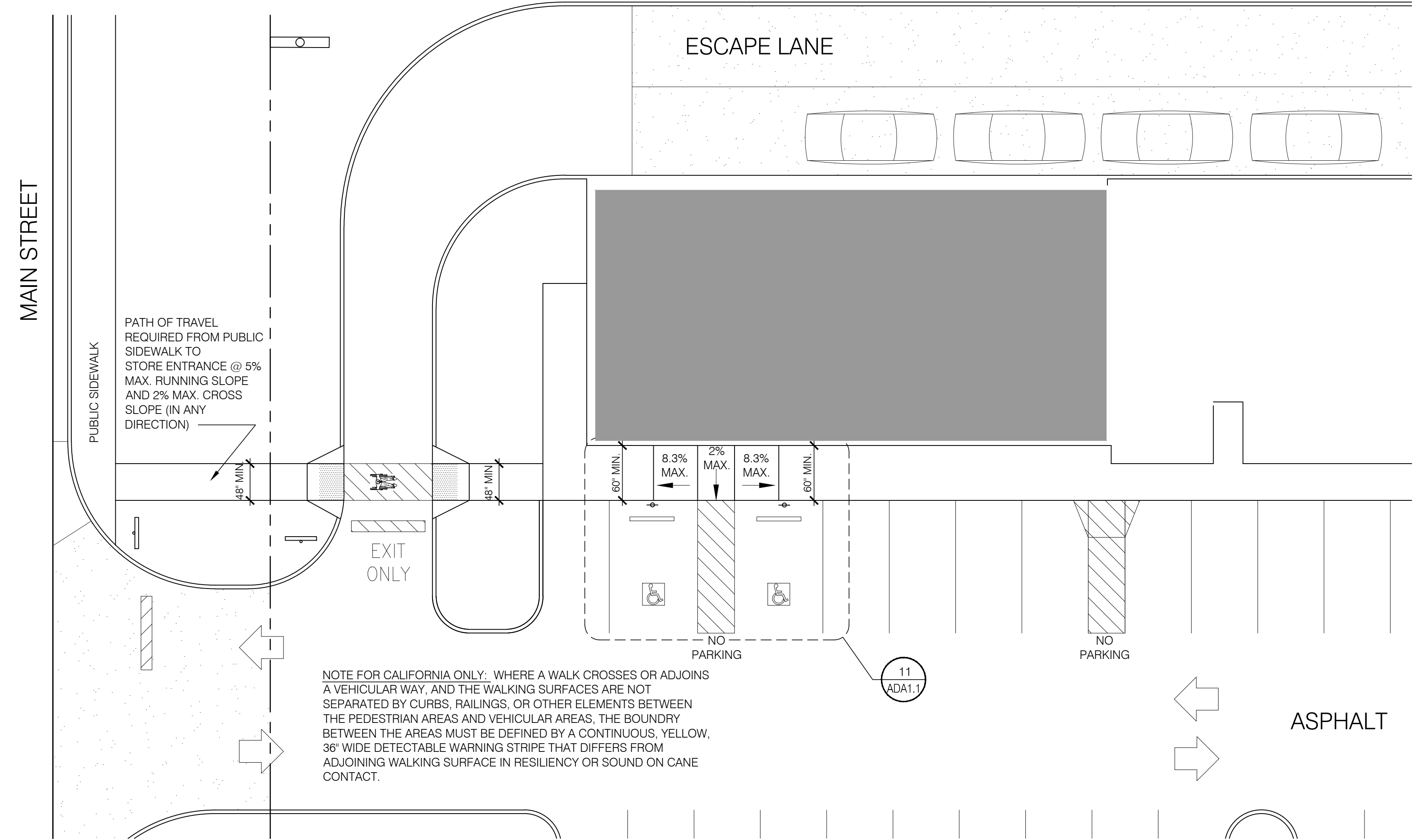
EXTERIOR DOOR REQUIREMENTS 1/2" = 1'-0" **13**



TRUNCATED DOMES N.T.S. **18**



BOTTOM RAIL (EXTERIOR DOOR) 3" = 1'-0" **14**



NOTE FOR CALIFORNIA ONLY: WHERE A WALK CROSSES OR ADJOINS A VEHICULAR WAY, AND THE WALKING SURFACES ARE NOT SEPARATED BY CURBS, RAILINGS, OR OTHER ELEMENTS BETWEEN THE PEDESTRIAN AREAS AND VEHICULAR AREAS, THE BOUNDARY BETWEEN THE AREAS MUST BE DEFINED BY A CONTINUOUS, YELLOW, 36" WIDE DETECTABLE WARNING STRIPE THAT DIFFERS FROM ADJOINING WALKING SURFACE IN RESILIENCY OR SOUND ON CANE CONTACT.

EXTERIOR PATH OF TRAVEL N.T.S. **2**

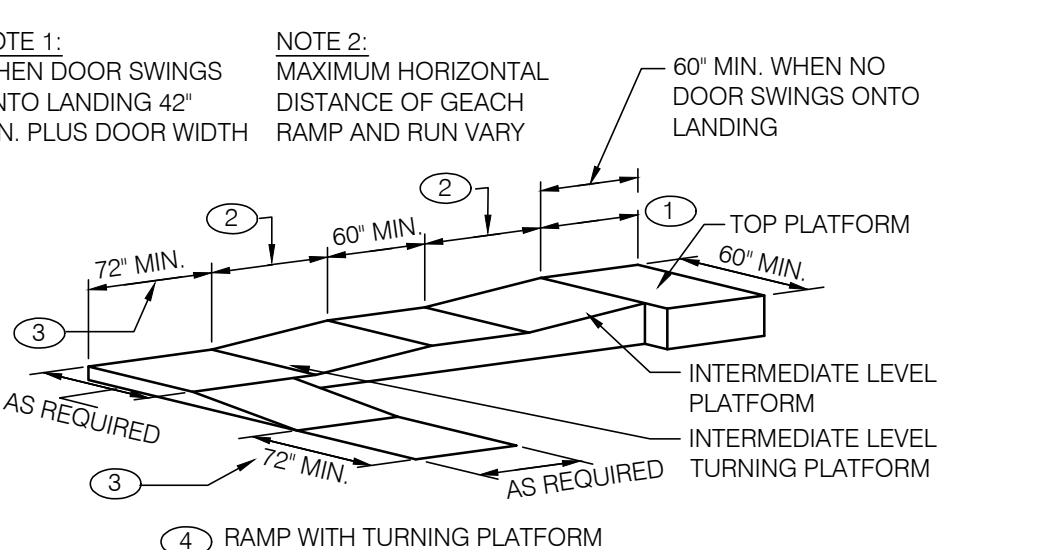
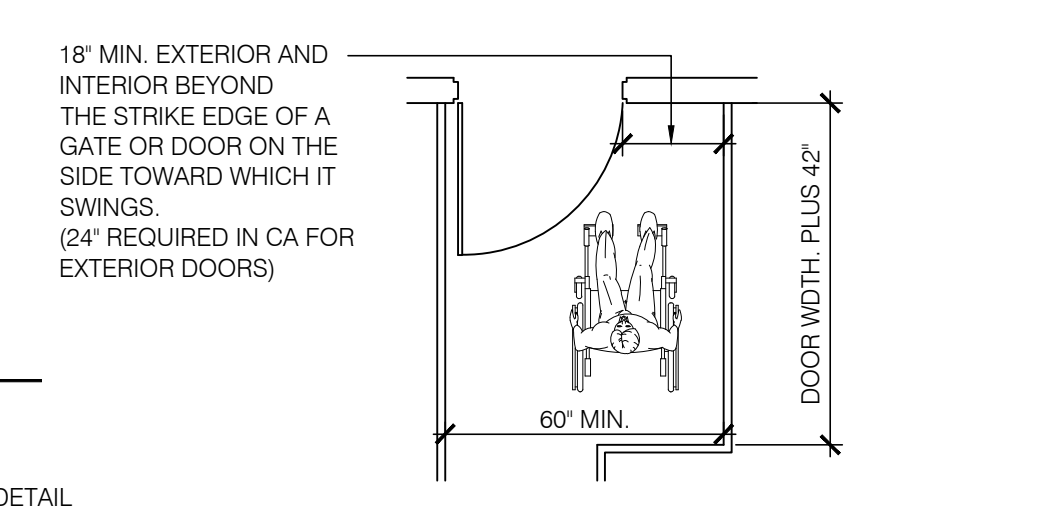
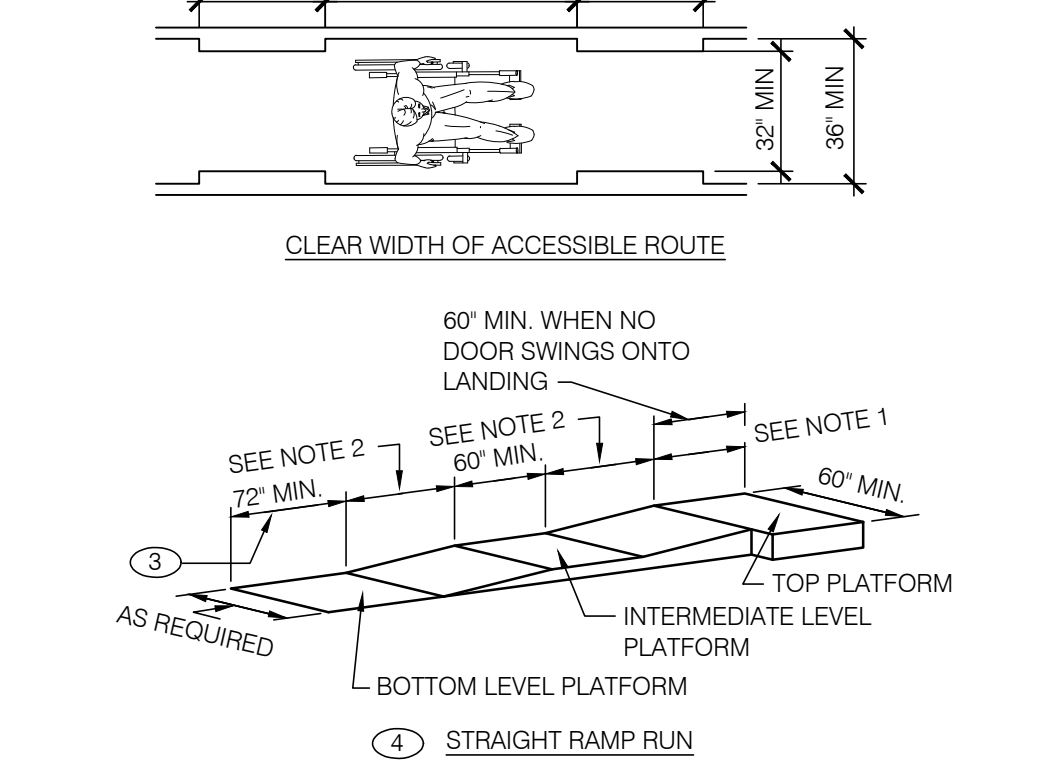
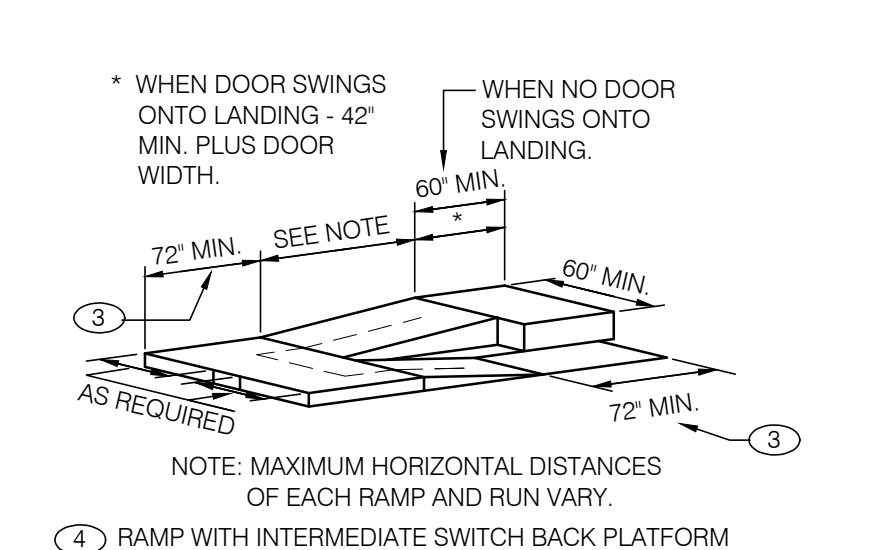
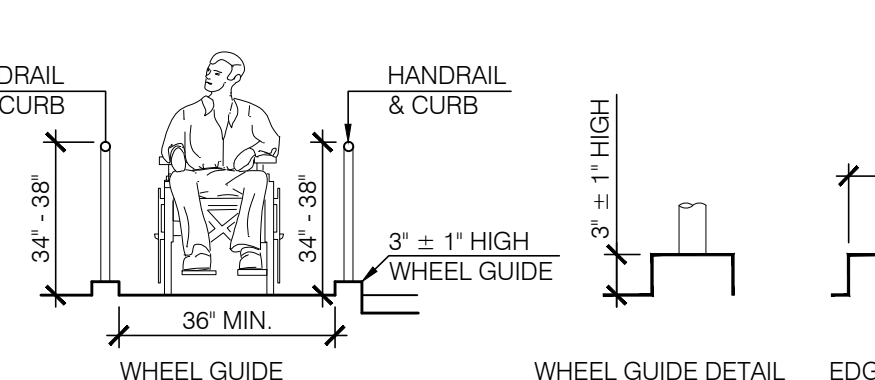
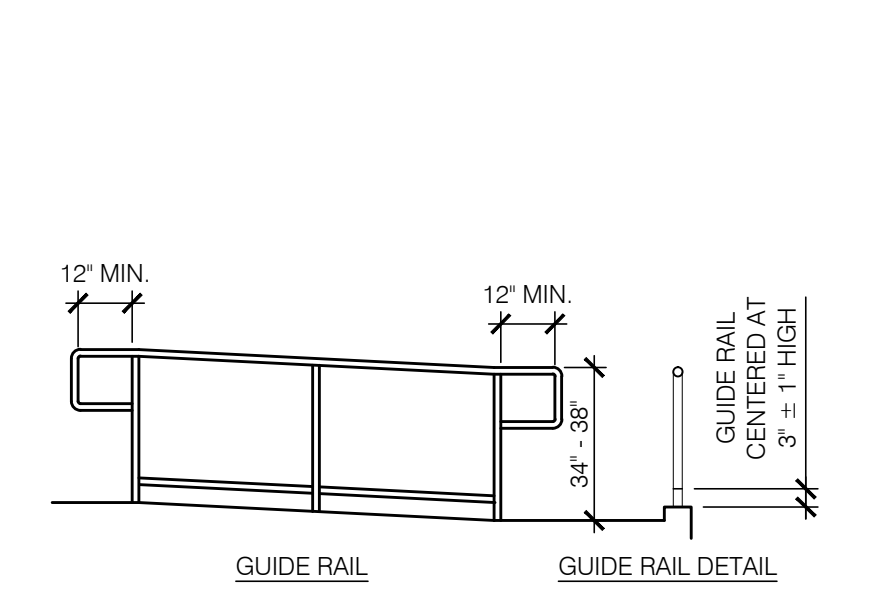
KEY NOTES

① WHEN DOOR SWINGS ONTO LANDING 42" MIN. PLUS DOOR WIDTH

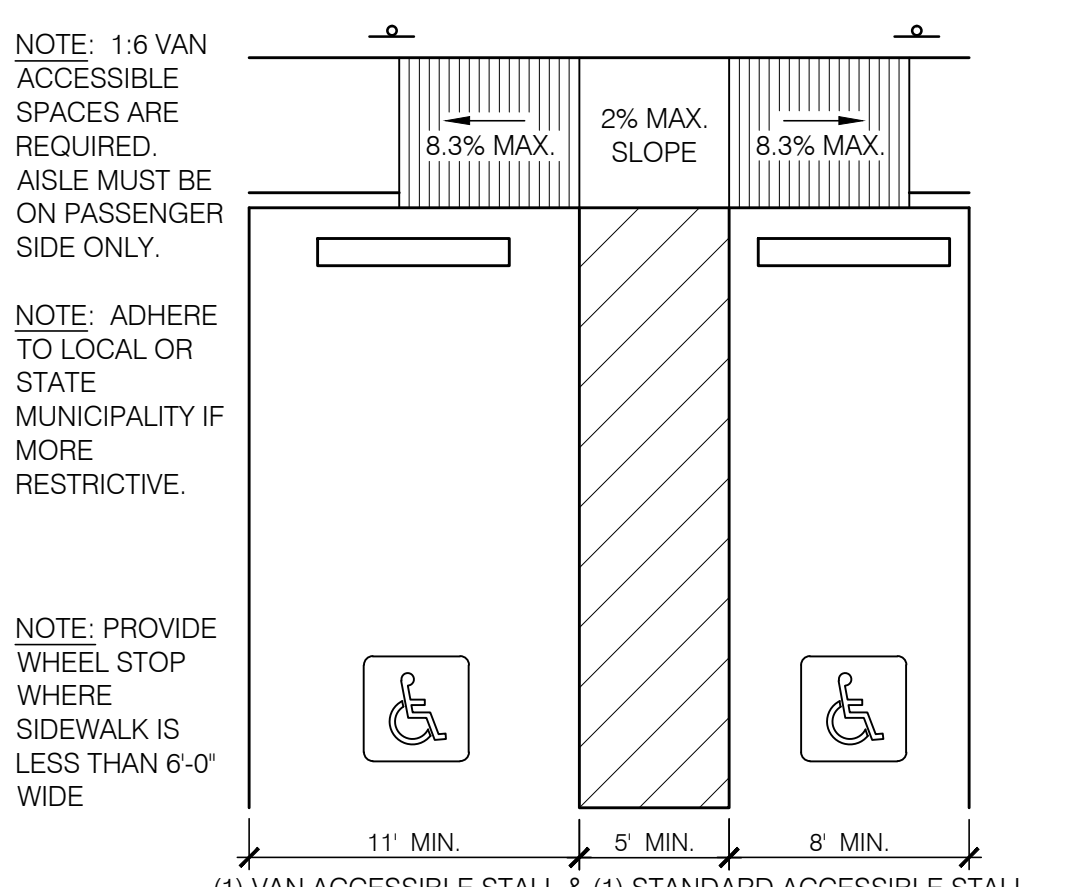
② MAXIMUM HORIZONTAL DISTANCE OF EACH RAMP & RUN VARY

③ 72" FOR CALIFORNIA & 60" FOR REST OF COUNTRY

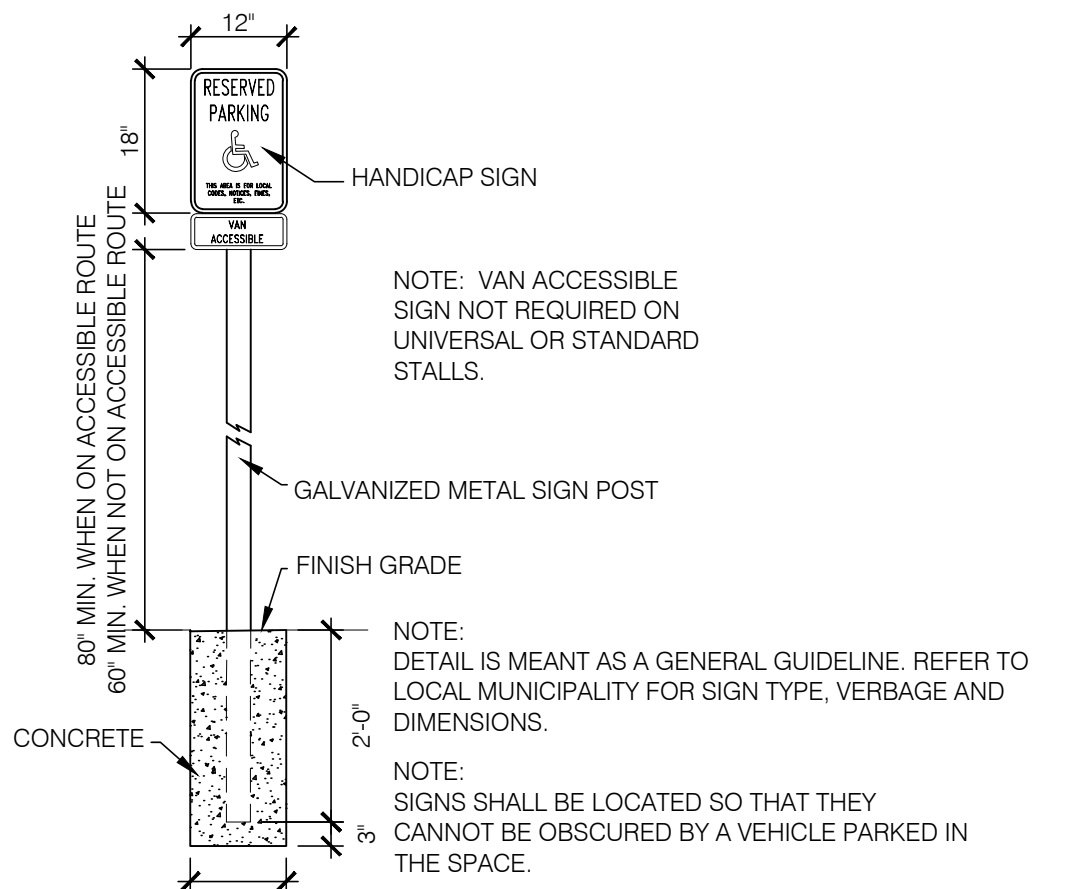
④ HANDRAILS NOT REQUIRED ON WALKING SURFACES WITH RUNNING SLOPES LESS THAN 1:20.



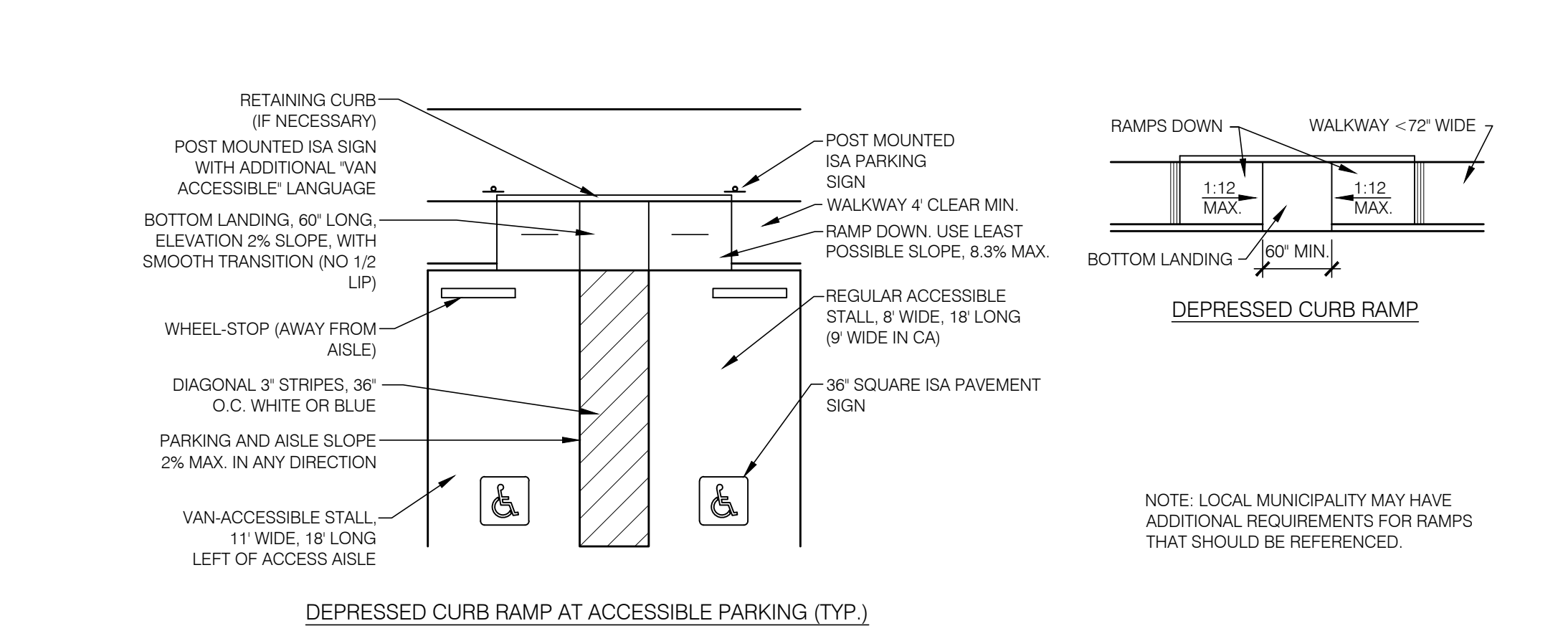
RAMPS N.T.S. **16**



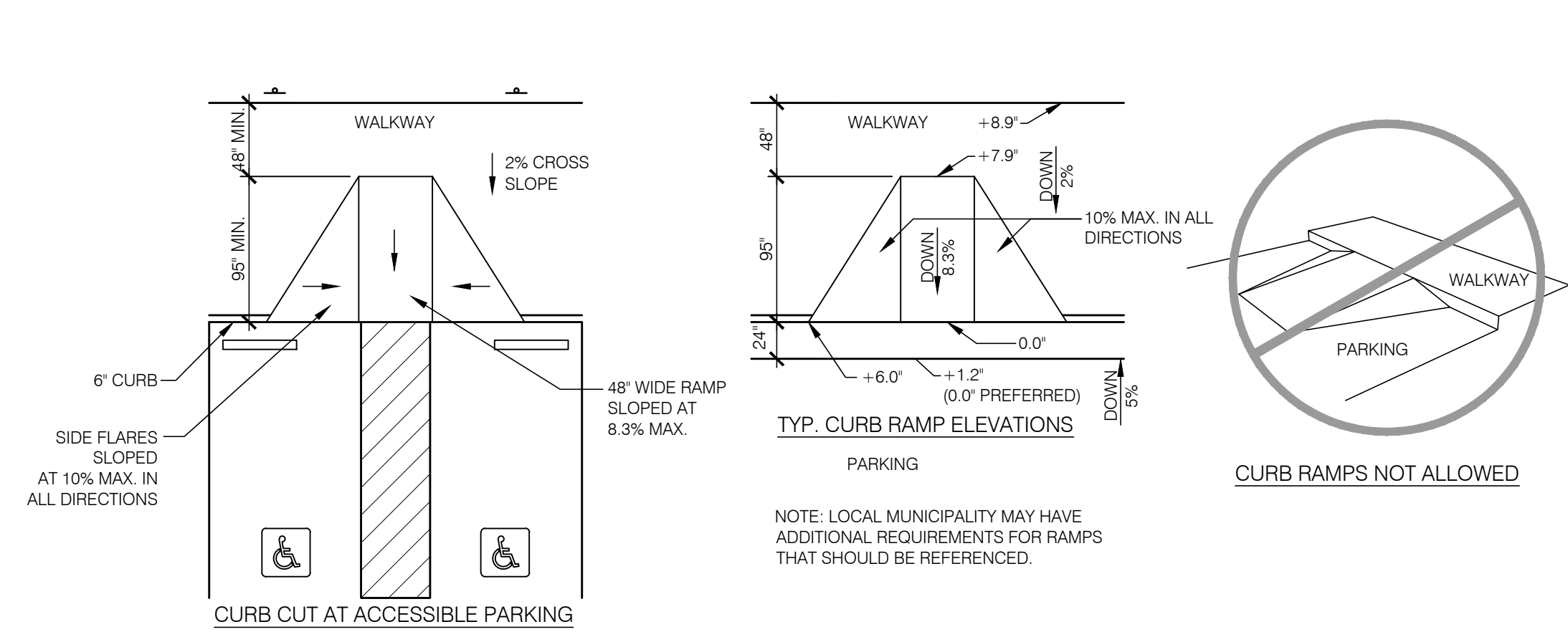
ACCESSIBLE PARKING STALL N.T.S. **11**



ACCESSIBLE PARKING SIGN N.T.S. **12**



CURB RAMPS N.T.S. **3**



CURB RAMPS N.T.S. **4**

MARK D. MCCLUGGAGE AIA, CCS
 1525 E. Douglas Wichita, KS 67211
 Tel: (316) 265-5367
 Fax: (316) 265-5466
 MAINE LIC. # ARC2333



07/14/16

15034.000

- △
- △
- △
- △
- △
- △
- △
- △
- △
- △
- △
- △
- △
- △
- △
- △

CONTRACT DATE: 07.06.2016
 BUILDING TYPE: CONVERSION
 PLAN VERSION: FEBRUARY 2015
 SITE NUMBER: XXX-XXX
 STORE NUMBER: XXXXX

TACO BELL
 1363 WASHINGTON AVE.
 PORTLAND, ME



ACCESSIBILITY REQUIREMENTS

ADA1.1

PLOT DATE: