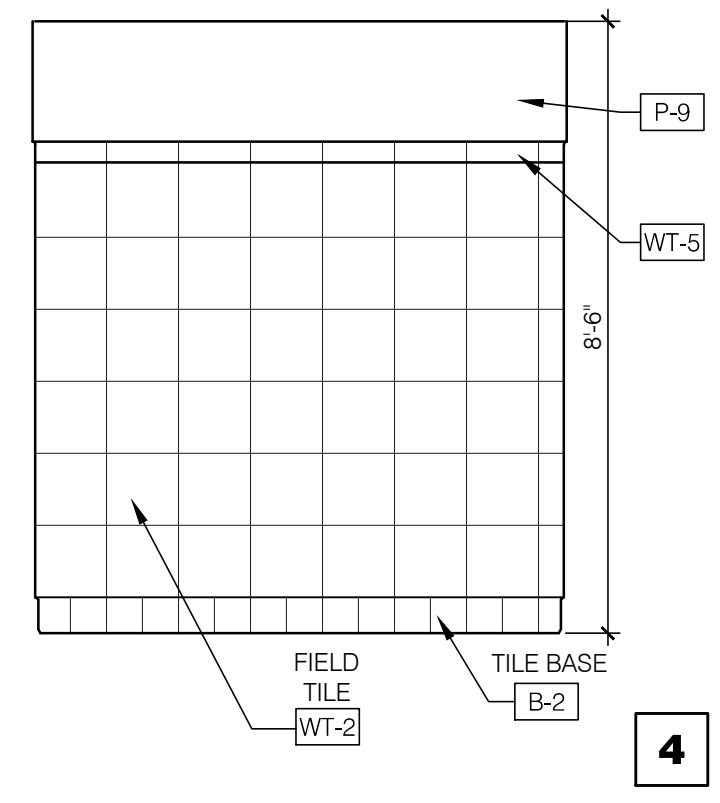
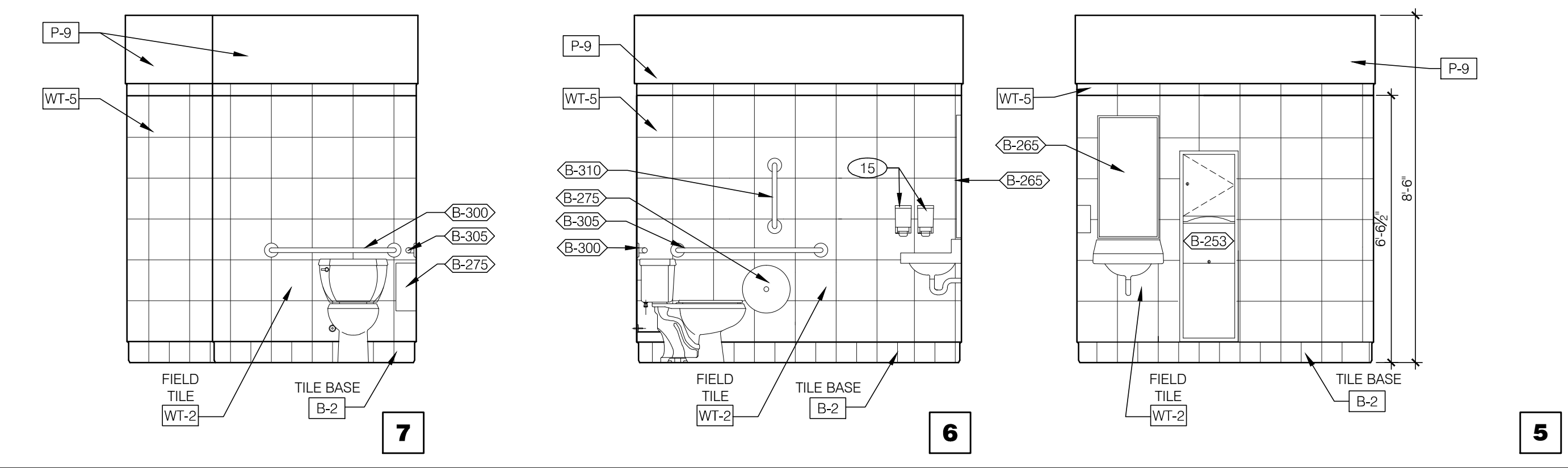


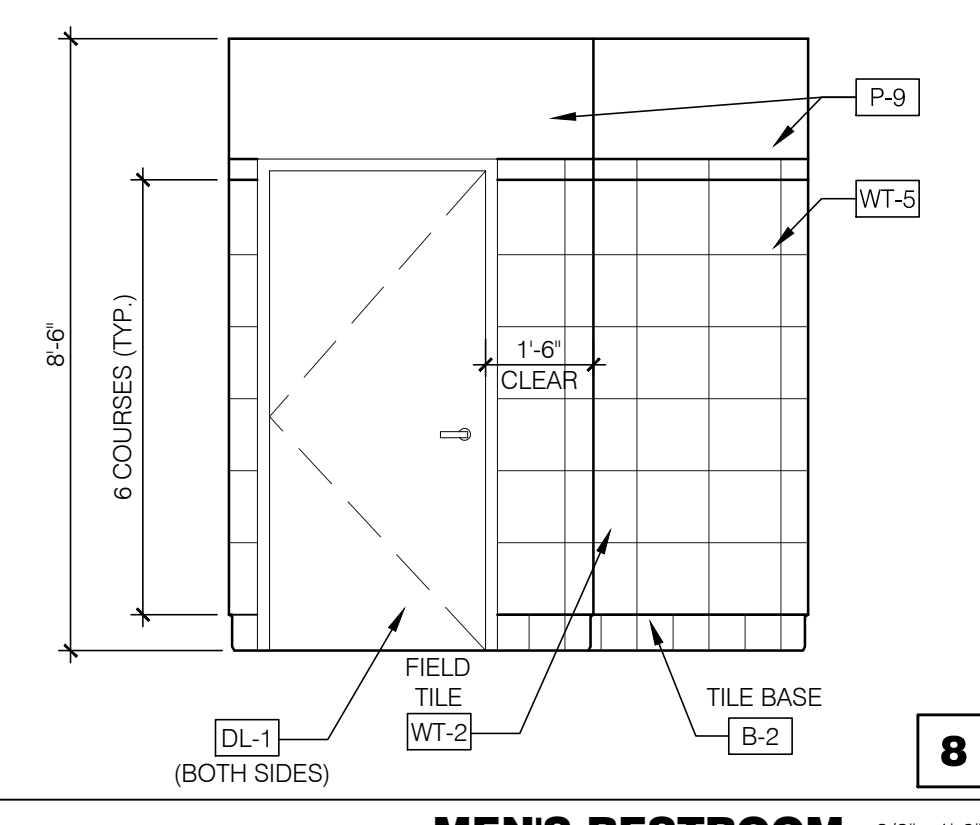
WOMEN'S RESTROOM 3/8"=1'-0"



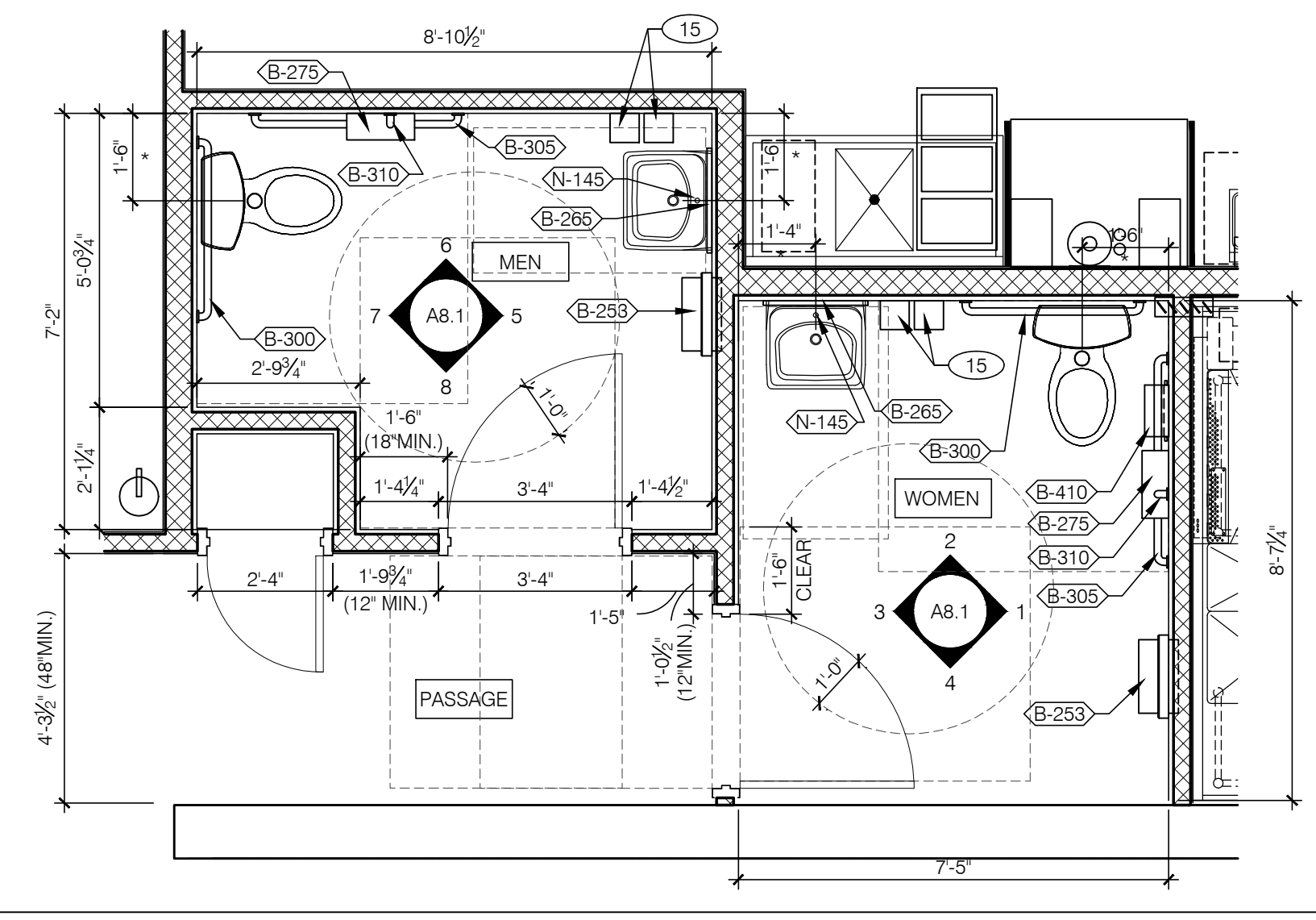
WOMEN'S RESTROOM 3/8"=1'-0"



MEN'S RESTROOM 3/8"=1'-0"

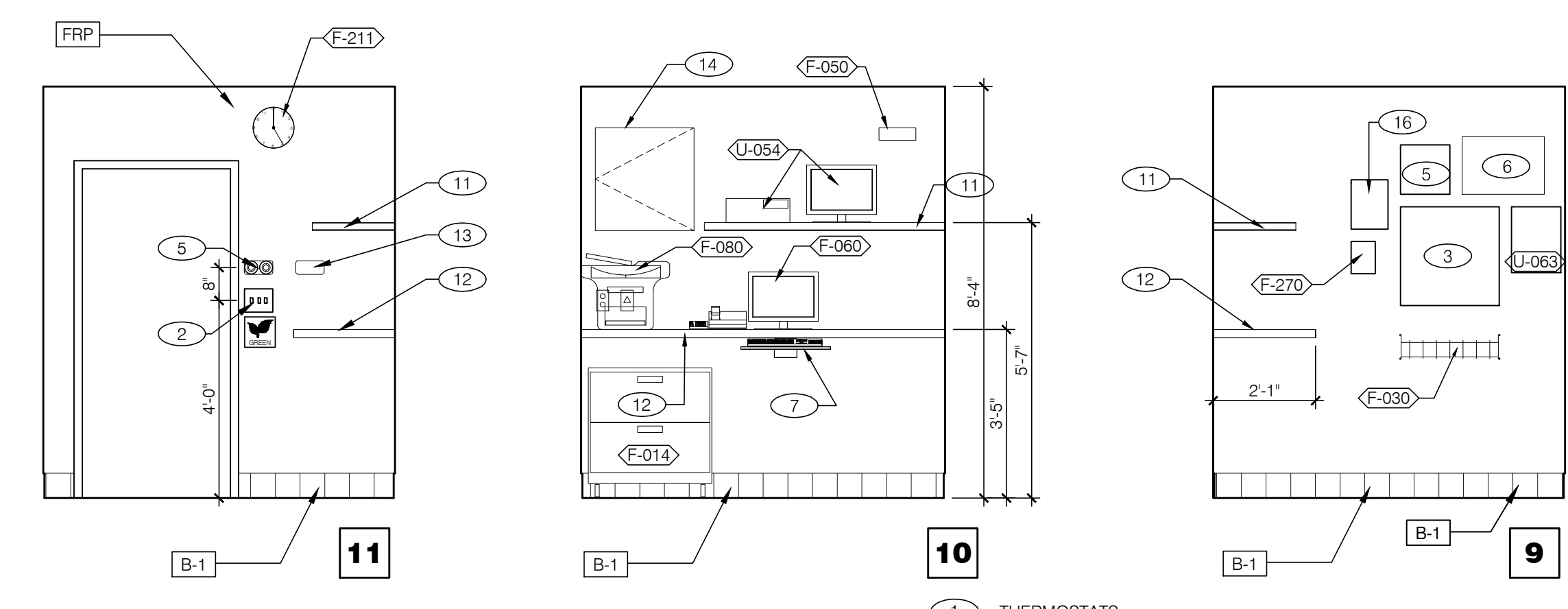
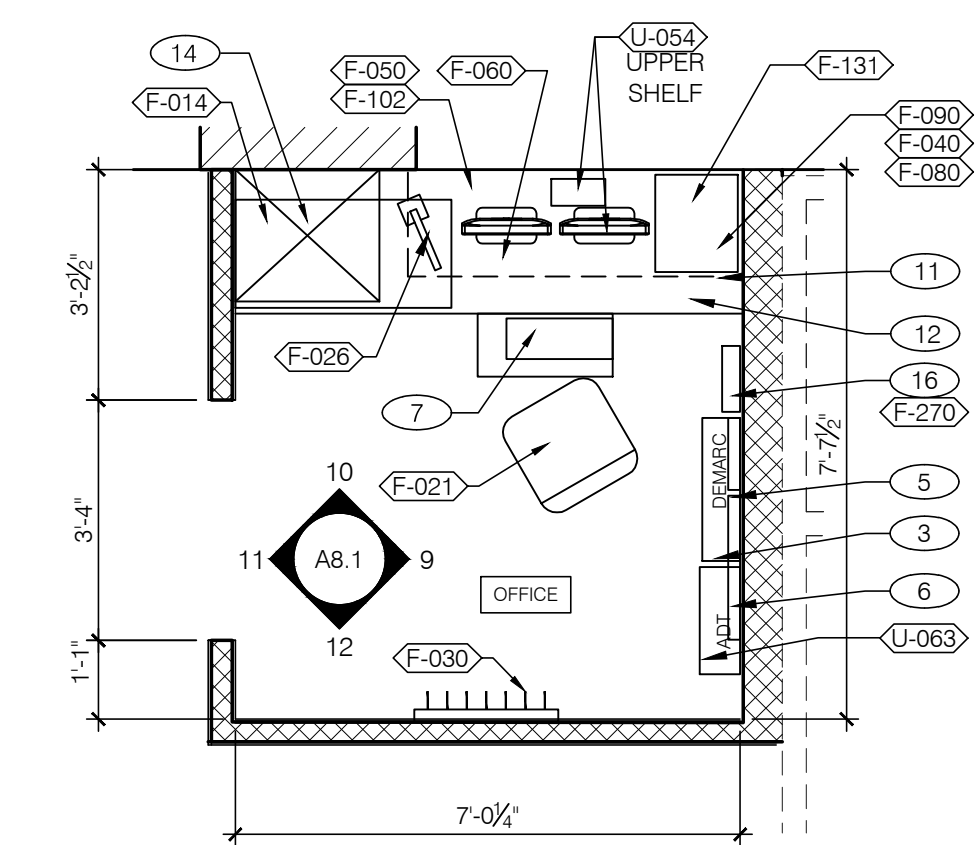


MEN'S RESTROOM 3/8"=1'-0"



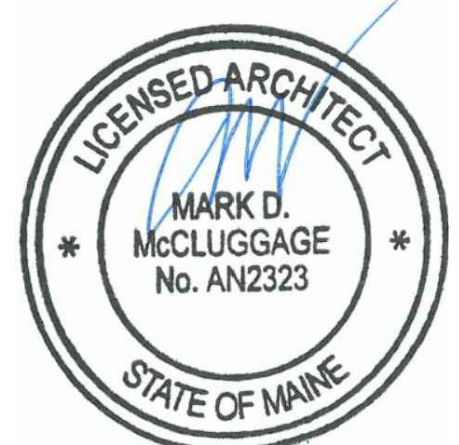
1. PROVIDE PROPER 2x BLOCKING AT WALL RECESSED MOUNTED ACCESSORIES.
 2. GRAB BARS, FASTENERS AND MOUNTING DEVICES SHALL BE INSTALLED PER ADA REQUIREMENTS. REFER TO SHEET ADA1.0.
 3. REFER TO FLOOR PLAN NOTES FOR BLOCKING AND SUBSTRATE NOTES.
 4. REFER TO SHEET ADA1.0 FOR MOUNTING HEIGHTS AND CLEARANCES OF ACCESSORIES AND FIXTURES.
 5. ALL DIMENSIONS THIS DRAWING ARE TO FINISH SURFACE.
 6. FOR ○ DESCRIPTIONS, REFER TO ARTWORK SCHEDULE ON SHEET A2.0.
 7. PROVIDE 1/4" MAX GAP AT ALL TOILET PARTITION JOINTS.
- * ABSOLUTE DIMENSION

ENLARGED RESTROOM / GENERAL NOTES 3/8"=1'-0" **A**



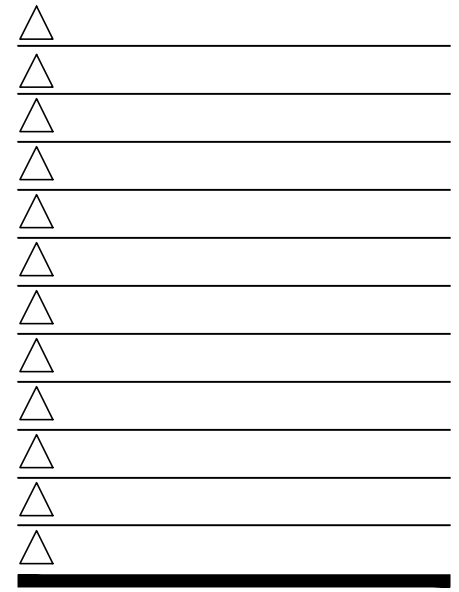
- 1 THERMOSTATS
- 2 LIGHTING CONTROL RELAY SWITCHES. SEE DETAIL 3/E3.1
- 3 TELEPHONE TERMINAL BOARD
- 4 NOT USED
- 5 12" X 12" PHONE DISTRIBUTION BOX. OWNER PROVIDED & INSTALLED.
- 6 WIRING CABINET BY POS PROVIDER.
- 7 UNDER COUNTER KEYBOARD TRAY.
- 8 ELECTRIC PANELS.
- 9 FAN & LIGHT CONTROL BOX; REF SHEET E6.0
- 10 EXTERIOR LIGHTING CONTROL PANEL (GREEN GATE).
- 11 SHELF BY G.C. - FINISH WITH PLASTIC LAMINATE DL-3.
- 12 COUNTER BY G.C. - FINISH WITH PLASTIC LAMINATE DL-3.
- 13 SMOKE DETECTOR WITH RESET SWITCH.
- 14 TECH-IN-A-BOX. REFER TO E3.1. G.C. TO PROVIDE BLOCKING WHERE REQUIRED.
- 15 HAND SOAP / SANITIZER DISPENSER - PROVIDED BY ECO LAB.
- 16 IRRIGATION CONTROL BOX.
- 17 FAN MOTOR STARTERS. SURFACE MOUNTED. TYP. OF 2.

OFFICE PLAN & ELEVATIONS / KEY NOTES 3/8"=1'-0" **B**



07/14/16

15034.000



CONTRACT DATE: 07.06.2016
BUILDING TYPE: CONVERSION
PLAN VERSION: FEBRUARY 2015
SITE NUMBER: XXX-XXX
STORE NUMBER: XXXXX

TACO BELL
1363 WASHINGTON AVE.
PORTLAND, ME



**INTERIOR ELEV.
ENLARGED
RESTROOMS &
OFFICE PLAN**

A8.1

PLOT DATE: